

2021 AP[®] Art and Design

Drawing Portfolio

Written Evidence

Sustained Investigation

Identify the question(s) or inquiry that guided your sustained investigation.

Describe how your sustained investigation shows evidence of practice, experimentation, and revision guided by your question(s) or inquiry.

Response:

I wanted to explore the relationship between humans and nature by using surrealism to reveal a personality trait in humans that is mimicked in the wild. I started my portfolio on paper, but halfway through, realized I could take it to new heights by using a more distinct, natural medium. Some of my pieces and ideas include the woman surrounded by small creatures who blend in to their surrounding for survival. She represents timidity, and is willing to close her eyes to the world and hide amongst her environment. The woman with a universe in her mind represents wisdom and the burden of knowledge, she has the weight of the world on her shoulders. The girl underwater represents fluidity. She's at peace with her surroundings, as easygoing as the flow of water. In the pastel pencil piece, I tried to give the subject more expression in her face to emphasize her inner conflict. Her mind, dark as night, is conflicting with her heart of sun, full of hope. My honeybee piece displays the hive mind mentality. The bee is whispering in the young woman's ear and conforming her to fit in. The owl piece shows perceptiveness. Owls are known for their eyesight so I added a third eye for surrealism.



Image 1

Sustained Investigation

Height: 12 inches

Width: 9 inches

Material(s): Colored pencil on toned tan paper, white gel pen and fine liner for details.

Process(es): I composed my sketch in a photoshop app to test the arrangement of creatures around the subject.



Image 2

Sustained Investigation

Height: 12 inches

Width: 9 inches

Material(s): Colored pencil on top of alcohol marker on toned tan paper with a white gel pen for details.

Process(es): Combined multiple reference pictures of the model, space photography, and my own imagination.



Image 3

Sustained Investigation

Height: 11.5 inches

Width: 9 inches

Material(s): Colored pencil on top of alcohol marker except for background, white gel pen, Bristol smooth paper

Process(es): Tried Bristol paper for the first time. Had to work harder to get smooth effect I was used to.



Image 4

Sustained Investigation

Height: 9 inches

Width: 9.5 inches

Material(s): Colored pencil, alcohol marker as a base for the water, and white gel pen on toned tan paper.

Process(es): Overcame challenge of unsuitable reference for water background below the girl by free-handing it.

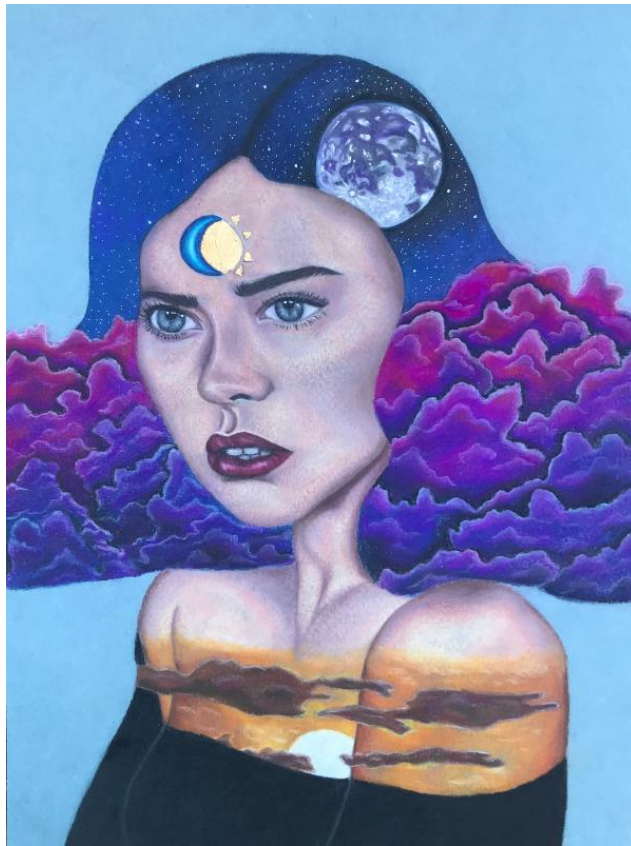


Image 5

Sustained Investigation

Height: 12 inches

Width: 9 inches

Material(s): Pastel pencils, colored pencil, gold leaf, blue toned pastel paper.

Process(es): Had to transfer first attempt to new paper, learned how to layer colored pencils with pastel pencils



Image 6

Sustained Investigation

Height: 8.75 inches

Width: 9 inches

Material(s): Colored pencil and a white gel pen on toned tan paper.

Process(es): Took my time drawing the flower details. Tested many possible flower arrangements on photoshop.



Image 7

Sustained Investigation

Height: 10.5 inches

Width: 8 inches

Material(s): Colored pencil, white gel pen, and red marker on a basswood round.

Process(es): Incorporated wood into portfolio for first time to further develop theme of connection to nature.



Image 8

Sustained Investigation

Height: 11.5 inches

Width: 8 inches

Material(s): Colored pencil and a white gel pen on a basswood round.

Process(es): Edited reference, sketched on paper, transferred paper sketch to wood for a clean starting point.

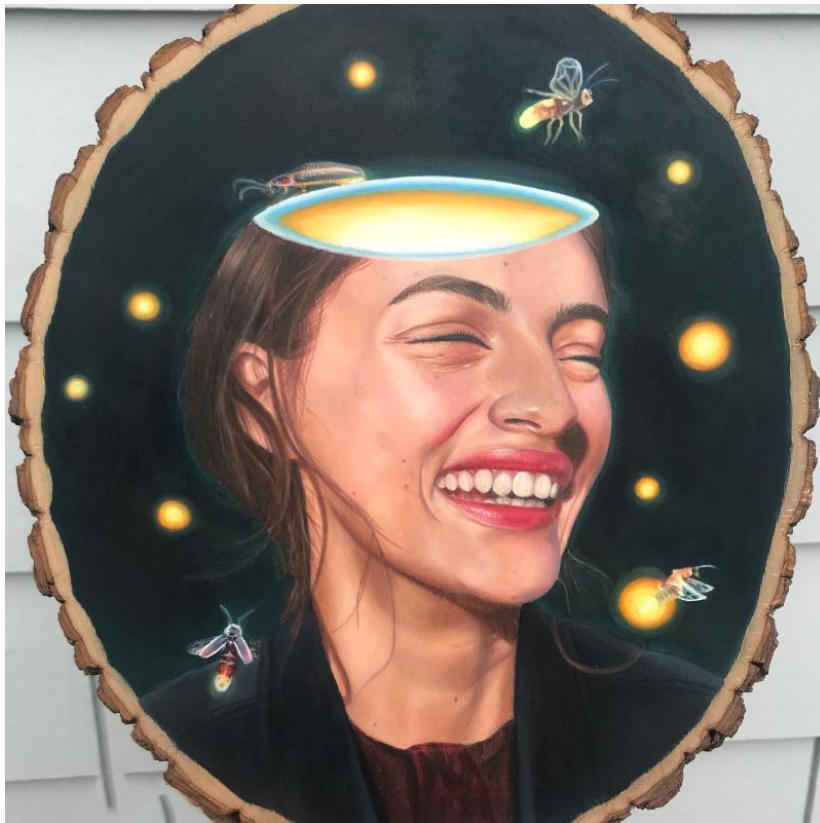


Image 9

Sustained Investigation

Height: 10.5 inches

Width: 9 inches

Material(s): Colored pencil and a white gel pen on a basswood round.

Process(es): Background and light source in head came from imagination, sketched first to make sure it worked



Image 10

Sustained Investigation

Height: 12 inches

Width: 9.25 inches

Material(s): Colored pencil on basswood.

Process(es): Struggled with face symmetry, continuously put drawing in front of mirror to check self and improve.



Image 11

Sustained Investigation

Height: 12 inches

Width: 7.5 inches

Material(s): Colored pencil and a white gel pen on a basswood round.

Process(es): Edited reference, fixed dull skin tone in reference by increasing saturation, using brighter colors.



Image 12

Sustained Investigation

Height: 9.5 inches

Width: 9.5 inches

Material(s): Colored pencil on basswood.

Process(es): Placed blue tape around areas to be left clean. Peeled off to get neat edges. Added rainbow eyes.



Image 13

Sustained Investigation

Height: 10.5 inches

Width: 4 inches

Material(s): Oil paint, gold leaf, silver leaf, stuffing, spray paint, fairy lights, and vans shoes.

Process(es): Theme of contest was "Head in the Clouds," so added cloud to elevate entry. Used lights for glowing



Image 14

Sustained Investigation

Height: 36 inches

Width: 8 inches

Material(s): Colored pencil, white gel pen, skateboard.

Process(es): Sanded down skateboard to make surface ready for colored pencil, adapted my technique to new surface



Image 15

Sustained Investigation

Height: 11 inches

Width: 10 inches

Material(s): Colored pencil, basswood, white gel pen, purple marker used to tone down some stars.

Process(es): Edited reference, myself as model. Wanted to end with self portrait showing traits I see in myself.

2021 AP[®] Art and Design

Drawing Art and Design Sustained Investigation, *Score 3/3/3/3*

Scoring Criteria

Rationale for Score

Row A: Inquiry – Score: 3

Written evidence **identifies** an inquiry that **guides** the sustained investigation.
AND

Visual evidence **demonstrates** the sustained investigation.

The written evidence identifies an inquiry that guides the sustained investigation, “I wanted to explore the relationship between humans and nature by using surrealism to reveal a personality trait in humans that is mimicked in the wild.” The visual evidence demonstrates a sustained investigation (images 1, 4, 8, and 15). The connections made through the visual work investigated, in a profound manner, personality traits such as wisdom, through choices in imagery, “The woman with a universe in her mind represents wisdom and the burden of knowledge, she has the weight of the world on her shoulders” (image 2). The portfolio consists of female portraits created in an unconventional and complex manner.

Row B: Practice, Experimentation, and Revision – Score: 3

Visual evidence of practice, experimentation, **AND** revision **demonstrates development** of the sustained investigation.

AND

Written evidence **describes how** the sustained investigation shows evidence of practice, experimentation, **OR** revision.

The evidence of practice detailed in the process statement includes, “[h]ad to transfer first attempt to new paper, learned how to layer colored pencils with pastel pencils (image 5). Visual evidence showcases practice that explores a repeated use of materials in a meaningful way. Repeated exploration of themes and media demonstrates development. For example, a recurring theme in imagery is a portrait with an expanded view showing the inside of the head filled with various elements inside (images 1, 6, and 14).

The works also reflect experimentation with a substrate material used to deliver the results. The written evidence identifies the experimental evolution of the portfolio, “I started my portfolio on paper, but halfway through, realized I could take it to new heights by using a more distinct, natural medium.” The work shows the transformation that began as photographs rearranged compositionally using Photoshop, then recreated on non-conventional objects such as a skateboard, tennis shoes, paper, and wood (images 3, 13, and 14). Evidence of experimentation with mini light bulbs to illuminate the inside of shoes painted is in image 13.

Revision is indicated in the written commentary and visually supported in the works, “Incorporated wood into portfolio for first time to further develop theme of connection to nature” (images 7, 8, 9, 10, 11, 12, and 15). The works display revision through the choice of media and techniques to promote the central idea, “[t]ested many possible flower arrangements on Photoshop” (image 6). Common themes used to express the main idea included portraits exhibiting layering (images 2 and 5) and cross-section views (images 7, 9, and 11).

Row C: Materials, Processes, and Ideas – Score: 3

Visual relationships
among materials, processes,
AND ideas are **clearly evident**
and **demonstrate synthesis**.

Visual evidence shows synthesis through the connections between materials, processes, and ideas. For example, an assortment of processes was used to achieve tonal values and create a sense of luminosity and portraying light from within, such as the effect of orbs of light and lightning bugs (image 9) and reflecting light (images 2 and 12). Synthesis is also evident in considerations through thoughtful design and manipulation of compositional principles such as repetition in the effect of falling hair which mimicked the flow of water (image 3).

Row D: 2-D/3-D/Drawing Art and Design Skills – Score: 3

Visual evidence of **good and advanced**
2-D/3-D/Drawing skills.

Highly developed drawing skills are evident through a remarkable understanding of light and shade to render surfaces creating the convincing visual effects of wet and dry surfaces. Evidenced in image 7 is a realistic rendering of a convincing sticky wet texture. Image 15 showcases the tonal variation necessary to generate suntan lines with precision. Proportion and hierarchy in conjunction with color, value, and opacity were used successfully in various works (images 1, 2, 5, and 11), giving visual evidence of advanced drawing skills.



Work 1

Selected Works

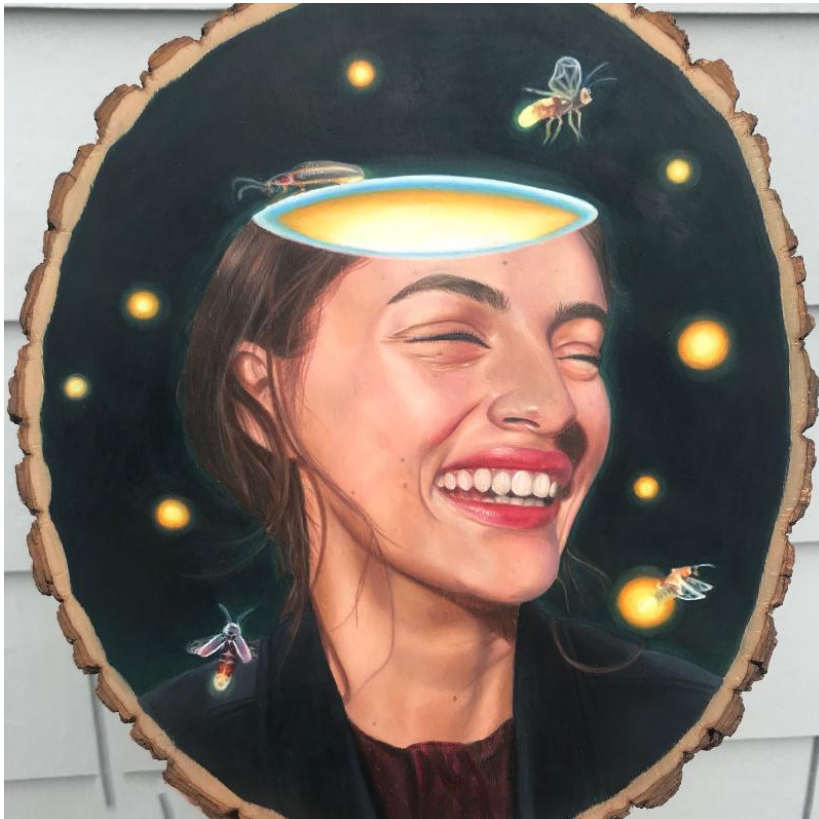
Height: 12 inches

Width: 9 inches

Idea(s): Wanted to create a balanced, detailed work. It represents timidity and hiding in one's surroundings

Material(s): Colored pencil, toned tan paper, white gel pen, fine liner for details

Process(es): Edited reference in photoshop app, tested many possible creature arrangements and backgrounds there.



Work 2

Selected Works

Height: 10.5 inches

Width: 9 inches

Idea(s): Wanted to bring more life to my portfolio with expressions and here, capture pure joy.

Material(s): Colored pencil, basswood, white gel pen.

Process(es): Tried to capture feeling I had chasing fireflies with my brother at our childhood home.



Work 3

Selected Works

Height: 36 inches

Width: 8 inches

Idea(s): Piece represents curiosity as the butterflies are escaping from the mind, searching for answers.

Material(s): Colored pencil, white gel pen, skateboard

Process(es): Wanted to try completely new medium. Sanded down surface to make workable for colored pencil.



Work 4

Selected Works

Height: 10.5 inches

Width: 8 inches

Idea(s): Hive mind mentality. Bee whispering in ear represents strong influence others' words can have.

Material(s): Colored pencil, basswood, white gel pen, red marker for background base.

Process(es): First time working on wood. Created process I use today. Edit reference, sketch on paper, transfer.



Work 5

Selected Works

Height: 11 inches

Width: 10 inches

Idea(s): Self portrait, my personality. Planets for wisdom, gemstones=rooted in beliefs, butterfly for hope.

Material(s): Colored pencil, basswood, white gel pen, purple marker to dilute the brightness of some of the stars

Process(es): Edited a reference with myself, chose nature elements from ones in my portfolio for greater synthesis

2021 AP[®] Art and Design

Drawing Selected Works, *Score 5*

Scoring Criteria

2-D/3-D/Drawing Art and Design Skills

Visual evidence of **advanced** 2-D/3-D/Drawing **skills**.

Materials, Processes, and Ideas

Visual relationships among materials, processes, and ideas are **clearly evident** and **demonstrate synthesis**.

Writing

Written evidence **identifies** materials, processes, and ideas.

Rationale for Score

The selected works demonstrate visual evidence of advanced drawing skills. Works 1, 2, and 4 exhibits a high level of success in rendering the form through light and shade and successful composition. The illusion of space is developed successfully through transparency and layer treatment in work 4. Female portraits comprise the works in a complex and multifaceted way. The visual evidence shows effective execution in the use of light and shade using color values. The achievement of color saturation by burnishing colored pencils on wood surfaces and paper is at a high level of accomplishment. Advanced drawing skills in works 1-4 promote visual engagement with the work.

Visual relationships among materials, processes, and ideas are clearly evident. Accomplishment with synthesis is apparent through the choice of materials and their use in support of the idea. Works 1-4 portray portrait sections to include the complexity of narrative elements. Variety in color tonalities helps create a sense of space and harmony in all five works. Evidence of synthesis is demonstrated in works 1, 2, and 3 through colored pencil to achieve a color saturation and opacity that showcases the surreal images.

The written evidence successfully identifies the use of materials, processes, and ideas.