

## 2021 AP<sup>®</sup> Art and Design

### 3-D Art and Design Sustained Investigation

#### Row B: Practice, Experimentation, and Revision

##### Written Evidence

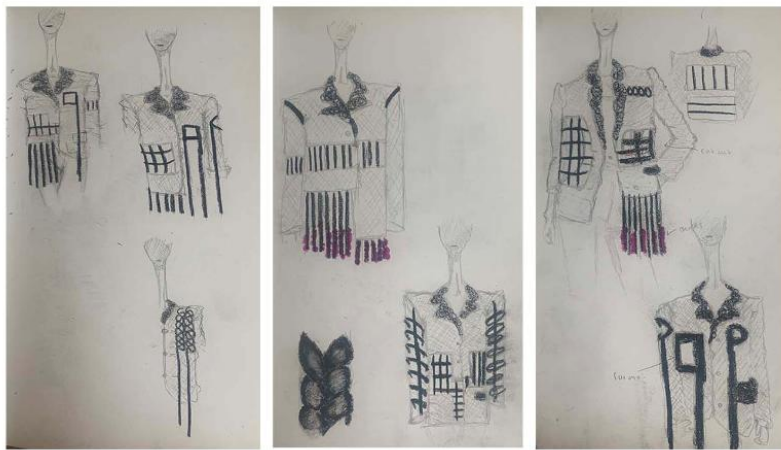
Sustained Investigation

Identify the question(s) or inquiry that guided your sustained investigation.

Describe how your sustained investigation shows evidence of practice, experimentation, and revision guided by your question(s) or inquiry.

Response:

What defines Black hair/beauty? What are the political ties between Black hair and business? Why? How can I properly represent Black hair while still exposing the negative connotations around it? In this series of work, "Flexin' My Complexion", I am exploring the strong, historical, cultural and political tie between African American women and their hair. Hair is the most elevated part of the body and it holds a cultural and spiritual importance to Africans much like how it holds value to African Americans. The work uses materials that represent common African American hairstyles like box braids, dreadlocks, cornrows, and afros, combined with items that represent female African cultures and the Historical/political culture of America. On the 55th anniversary of the Civil Rights Act, U.S. courts are still divided about African Americans' right to wear their natural hair in the workplace. Many African American women and Men are being fired and denied jobs because their natural hair is "unprofessional". My work focuses on redefining Black hair in the workplace. I utilize business casual wear, specifically suit jackets, and combine them with braided hair to represent unity and equality.



## Image 1

Sustained Investigation

Height: NA

Width: NA

Depth: NA

Material(s): Pencil, paper.

Process(es): I created a mood board and brainstormed ideas and sketches.



## Image 2

Sustained Investigation

Height: 30 inches

Width: 15 inches

Depth: NA

Material(s): Suit Jacket, Synthetic hair, Gold hair decorations, Gold sewing thread, and black sewing thread

Process(es): Cutting the suit, sewing pieces together by hand sewing and sewing machine.



### Image 3

Sustained Investigation

**Height:** 30 inches

**Width:** 15 inches

**Depth:** NA

**Material(s):** Suit Jacket, Synthetic hair, Gold hair decorations, Gold sewing thread, and black sewing thread

**Process(es):** Cutting the suit, sewing pieces together by hand sewing and sewing machine.



### Image 4

Sustained Investigation

**Height:** 30 inches

**Width:** 15 inches

**Depth:** NA

**Material(s):** Suit Jacket, Synthetic hair, Gold hair decorations, Gold sewing thread, and black sewing thread

**Process(es):** Cutting the suit, sewing pieces together by hand sewing and sewing machine.



## Image 5

Sustained Investigation

**Height:** 30 inches

**Width:** 15 inches

**Depth:** NA

**Material(s):** Suit Jacket, Synthetic hair, Gold hair decorations, Gold sewing thread, and black sewing thread

**Process(es):** Cutting the suit, sewing pieces together by hand sewing and sewing machine.



## Image 6

Sustained Investigation

**Height:** 30 inches

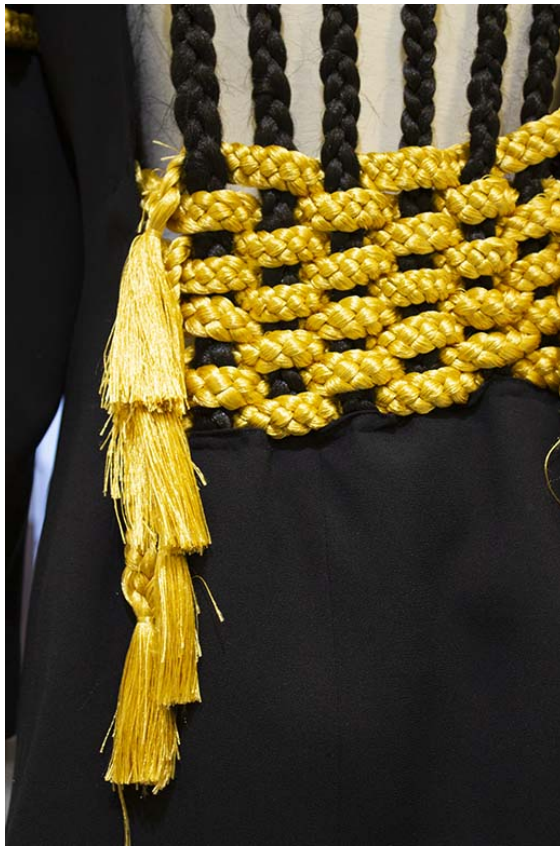
**Width:** 15 inches

**Depth:** NA

**Material(s):** Suit Jacket, Synthetic hair, Gold hair, decorations, Gold sewing thread, and black sewing thread

**Process(es):** Cutting the suit, sewing pieces together by hand sewing and sewing machine.





## Image 7

Sustained Investigation

**Height:** 30 inches

**Width:** 15 inches

**Depth:** NA

**Material(s):** Suit Jacket, Synthetic hair, Gold hair, decorations, Gold sewing thread, and black sewing thread

**Process(es):** Cutting the suit, sewing pieces together by hand sewing and sewing machine.



## Image 8

Sustained Investigation

**Height:** 30 inches

**Width:** 15 inches

**Depth:** NA

**Material(s):** Suit Jacket, Synthetic hair, Gold hair, decorations, Gold sewing thread, and black sewing thread

**Process(es):** Cutting the suit, sewing pieces together by hand sewing and sewing machine.



## Image 9

Sustained Investigation

**Height:** 30 inches

**Width:** 15 inches

**Depth:** NA

**Material(s):** Suit Jacket, Synthetic hair, Gold hair, decorations, Gold sewing thread, and black sewing thread

**Process(es):** Cutting the suit, sewing pieces together by hand sewing and sewing machine.



## Image 10

Sustained Investigation

**Height:** 30 inches

**Width:** 15 inches

**Depth:** NA

**Material(s):** Suit Jacket, Synthetic hair, Gold sewing thread, and black sewing thread.

**Process(es):** Cutting the suit, sewing pieces together by hand sewing and sewing machine.



## Image 11

Sustained Investigation

**Height:** 30 inches

**Width:** 15 inches

**Depth:** NA

**Material(s):** Suit Jacket, Synthetic hair, Gold decorations, Gold sewing thread, and black sewing thread

**Process(es):** Cutting the suit, sewing pieces together by hand sewing and sewing machine.



## Image 12

Sustained Investigation

**Height:** 30 inches

**Width:** 15 inches

**Depth:** NA

**Material(s):** Suit Jacket, Synthetic hair, Gold decorations, Gold sewing thread, and black sewing thread

**Process(es):** Cutting the suit, sewing pieces together by hand sewing and sewing machine.





## Image 13

Sustained Investigation

**Height:** 30 inches

**Width:** 15 inches

**Depth:** NA

**Material(s):** Suit Jacket, Synthetic hair, Gold decorations, Gold sewing thread, and black sewing thread

**Process(es):** Cutting the suit, sewing pieces together by hand sewing and sewing machine.



## Image 14

Sustained Investigation

**Height:** 30 inches

**Width:** 15 inches

**Depth:** NA

**Material(s):** Suit Jacket, Synthetic hair, wooden beads, metal epaulettes, black sewing thread.

**Process(es):** Hand sewing synthetic hair and hand crafting metal epaulettes.





## Image 15

Sustained Investigation

**Height:** 30 inches

**Width:** 15 inches

**Depth:** NA

**Material(s):** Suit Jacket, Synthetic hair, wooden beads, metal epaulettes, black sewing thread.

**Process(es):** Hand sewing synthetic hair and hand crafting metal epaulettes.

## Sustained Investigation Scoring Rubric, Row B

B	Practice, Experimentation, and Revision		
	1	2	3
	Visual evidence of practice, experimentation, OR revision; however, visual evidence <b>does not relate</b> to a sustained investigation.	Visual evidence of practice, experimentation, OR revision <b>relates</b> to the sustained investigation. <b>AND</b> Written evidence <b>relates</b> to the visual evidence of practice, experimentation, OR revision.	Visual evidence of practice, experimentation, <b>AND</b> revision <b>demonstrates development</b> of the sustained investigation. <b>AND</b> Written evidence <b>describes how</b> the sustained investigation shows evidence of practice, experimentation, OR revision.

### Scoring Criteria

Row B: **Practice, Experimentation, and Revision** – Score: 3

Visual evidence of practice, experimentation, **AND** revision **demonstrates development** of the sustained investigation.

**AND**  
Written evidence **describes how** the sustained investigation shows evidence of practice, experimentation, **OR** revision.

### Score Rationale

The process of incorporating synthetic hair to modify professional attire is a highly experimental approach to the sustained investigation. The written evidence states, “I utilize business casual wear, specifically suit jackets, and combine them with braided hair to represent unity and equality.” The conventional shapes of found suit jackets act as raw material throughout the portfolio. Transformation occurs through cutting, sewing, assemblage, and metalsmithing.

Visual evidence of practice, experimentation, and revision demonstrates the development of the sustained investigation, reaching a wide range of 3-D skills with a limited set of materials. In image 4, the synthetic hair is applied to the surface in complex linear patterns, whereas image 10 provides an example of revision as the cut jacket becomes a frame for weaving. Iteration of designs evident in the sketches (image 1) provides another source of revision, as the completed artworks show growth beyond the early sketched ideas. An incremental yet bold exploration of the possibilities provides a clear demonstration of practice and revision.

The experimental juxtaposition between business attire and synthetic hair “redefine(s) Black hair in the workplace.” The stylistic forms of hair “like box braids, dreadlocks, cornrows, and afros” are recreated to challenge the existing shape of the suit jacket. Although the written statement could offer more descriptive details, the preponderance of evidence in this portfolio displays practice, experimentation, and revision in the development of the sustained investigation.



Image 3



Image 10