

2021 AP[®] Art and Design

3-D Art and Design Sustained Investigation

Row B: Practice, Experimentation, and Revision

Written Evidence

Sustained Investigation

Identify the question(s) or inquiry that guided your sustained investigation.

Describe how your sustained investigation shows evidence of practice, experimentation, and revision guided by your question(s) or inquiry.

Response:

Nowadays, society sets up very strict and narrow-minded expectations for people. In order to blend in and gain favor, many people blindly pursue the standard. This sustained investigation's purpose is to encourage people to live up to their own expectations in order to differentiate themselves among the crowd. The pieces are grouped into 4 couplets representing appearance expectation (image 1-4), culture struggle (image 5-7), social conflict (image 8-11), and societal assumption (image 12-15). Throughout the process, I experimented with garment construction, fabric designing, and accessories making. In images 1-4 and 10-13, I experimented with/practiced garment draping. In images 1-2, I experimented with fabric designing. In images 3-6, 8-11, and 14-15, I experimented with accessories making with a variety of materials, such as paper, wire, and cardboard. For images 1-2, I had to restart as the first try turned out too disproportional (see selected work 1). For images 8-9, the wiring was too heavy for the base so I revised with different wires and thicker cardboard. For images 14-15, the paster hands are too heavy for hairclips so I had to use an elastic band to secure them.

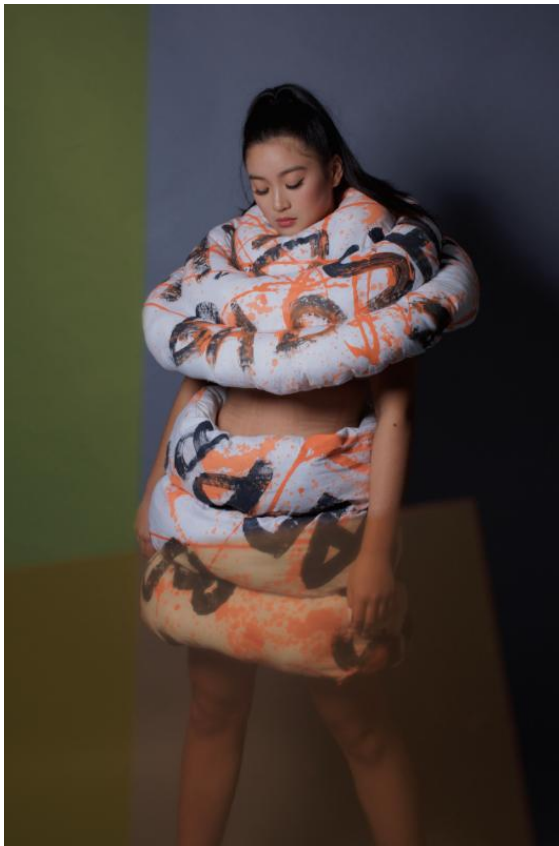


Image 1

Sustained Investigation

Height: 30 inches

Width: 32 inches

Depth: 30 inches

Material(s): orange/black fabric
paint
white muslin fabric
black 30 inches zipper
thread
cotton stuffing

Process(es): Designed the fabric by pouring fabric paint, draped the garment, stuffed the garment with cotton.



Image 2

Sustained Investigation

Height: 30 inches

Width: 32 inches

Depth: 30 inches

Material(s): orange/black fabric
paint
white muslin fabric
black 30 inches zipper
thread
cotton stuffing

Process(es): Designed the fabric by pouring fabric paint, draped the garment, stuffed the garment with cotton.



Image 3

Sustained Investigation

Height: 62 inches

Width: 13 inches

Depth: 11 inches

Material(s): white spandex fabric
black buckles
cardboard box
black, white acrylic paint
thread
hot glue

Process(es): Draped the jumpsuit, added buckles decorations, glued together the cardboard box, painted the box.



Image 4

Sustained Investigation

Height: 62 inches

Width: 13 inches

Depth: 11 inches

Material(s): white spandex fabric
black buckles
cardboard box
black, white acrylic paint
thread
hot glue

Process(es): Draped the jumpsuit, added buckles decorations, glued together the cardboard box, painted the box.



Image 5

Sustained Investigation

Height: 18 inches

Width: 19 inches

Depth: 8 inches

Material(s): cardstock paper
hot glue
black headband
orange, blue acrylic paint

Process(es): Made the paper origami eagle and phoenix, painted them, glued them onto a black hairband.



Image 6

Sustained Investigation

Height: 18 inches

Width: 19 inches

Depth: 8 inches

Material(s): cardstock paper
hot glue
black headband
orange, blue acrylic paint

Process(es): Made the paper origami eagle and phoenix, painted them, glued them onto a black hairband.



Image 7

Sustained Investigation

Height: 69 inches

Width: 44 inches

Depth: 1 inches

Material(s): white muslin fabric
thread

Process(es): Draped the garment,
added elastic and zipper to ensure
proper wear.



Image 8

Sustained Investigation

Height: 27 inches

Width: 36 inches

Depth: 3 inches

Material(s): paper masks
orange, blue acrylic paint
wire
cardboard
glue
string/buckle

Process(es): Painted paper masks,
made the portable base out of
cardboard, wire, and buckle. Wired
on the masks.



Image 9

Sustained Investigation

Height: 27 inches

Width: 36 inches

Depth: 3 inches

Material(s): paper masks
orange, blue acrylic paint
wire
cardboard
glue
string/buckle

Process(es): Painted paper masks, made the portable base out of cardboard, wire, and buckle. Wired on the masks.



Image 10

Sustained Investigation

Height: 27 inches

Width: 31 inches

Depth: 3 inches

Material(s): organza
thread
fabric
paper mask
black acrylic paint

Process(es): Made the underskirt with organza, draped the cape, painted the mask, sewed the eye cover



Image 11

Sustained Investigation

Height: 27 inches

Width: 31 inches

Depth: 3 inches

Material(s): organza
thread
fabric
paper mask
black acrylic paint

Process(es): Made the underskirt with organza, draped the cape, painted the mask, sewed the eye cover



Image 12

Sustained Investigation

Height: 32 inches

Width: 24 inches

Depth: 1 inches

Material(s): black fabric paint
muslin fabric
white zipper
thread
black ribbon
shoulder pads

Process(es): Draped the dress, added puff sleeves, drew the muscle-inspired patterns on with black fabric paint.



Image 13

Sustained Investigation

Height: 32 inches

Width: 24 inches

Depth: 1 inches

Material(s): black fabric paint
muslin fabric
white zipper
thread
black ribbon
shoulder pads

Process(es): Draped the dress, added puff sleeves, drew the muscle-inspired patterns on with black fabric paint.



Image 14

Sustained Investigation

Height: 9 inches

Width: 18 inches

Depth: 2 inches

Material(s): plaster
black organza
black ribbon
orange, blue acrylic paint
elastic band

Process(es): Made the hands out of plaster, painted the hands, draped an eye cover with organza and ribbon.



Image 15

Sustained Investigation

Height: 9 inches

Width: 18 inches

Depth: 2 inches

Material(s): plaster
black organza
black ribbon
orange, blue acrylic paint
elastic band

Process(es): Made the hands out of plaster, painted the hands, draped an eye cover with organza and ribbon.

Sustained Investigation Scoring Rubric, Row B

B	Practice, Experimentation, and Revision		
	1	2	3
	Visual evidence of practice, experimentation, OR revision; however, visual evidence does not relate to a sustained investigation.	Visual evidence of practice, experimentation, OR revision relates to the sustained investigation. AND Written evidence relates to the visual evidence of practice, experimentation, OR revision.	Visual evidence of practice, experimentation, AND revision demonstrates development of the sustained investigation. AND Written evidence describes how the sustained investigation shows evidence of practice, experimentation, OR revision.

Scoring Criteria

Row B: **Practice, Experimentation, and Revision** – Score: 2

Visual evidence of practice, experimentation, **OR** revision **relates** to the sustained investigation.

AND

Written evidence **relates** to the visual evidence of practice, experimentation, **OR** revision.

Score Rationale

The heart of this portfolio is a sustained investigation focusing on “encourage[ing] people to live up to their own expectations in order to differentiate themselves from the crowd.” Experimental fashion design and construction serve as the platform to communicate this broad idea. Images 3-6, 8-11, and 14-15 demonstrate the experimentation with accessories through a variety of materials “such as paper, wire, and cardboard.”

The written evidence supporting the practice, experimentation, OR revision describes how several of the garments and accessories were modified (revised) to produce this body of work. However, the visual evidence provides limited insight into how the modifications or revisions occurred. Therefore, the visual evidence should demonstrate the development of the sustained investigation, and the written evidence should describe how practice, experimentation, OR revision occurred to receive a score point of 3. To achieve this, composite photos demonstrating modifications or corrections that visually show the development of the sustained investigation help the viewer understand the artistic journey. The experimental fashion design and construction are evident in this portfolio. However, more visual evidence providing insight into the creative development of the sustained investigation is necessary to move to a score point of 3.



Image 6



Image 15

Sustained Investigation Score: Row A: Score 2 • **Row B: Score 2** • Row C: Score 2 • Row D: Score 2