

2021 AP[®] Art and Design

2-D Art and Design Sustained Investigation

Row B: Practice, Experimentation, and Revision

Written Evidence

Sustained Investigation

Identify the question(s) or inquiry that guided your sustained investigation.

Describe how your sustained investigation shows evidence of practice, experimentation, and revision guided by your question(s) or inquiry.

Response:

My SI explores the Biophilia Hypothesis with a focus on humans' emotional & physical (dis)connect from nature 1,2. After research, I unpacked this complex issue further: although humanity desires to connect w/ the world, they also civilise it for their own benefit and thus ultimately destroy it. Visiting the family conservation reserve, I captured scenes showing human control over nature 3,4,5. I experimented and revised with locations, props and poses to arrive at strongest intent & composition for the finals. To personally connect, I grounded myself in nature(6) not entirely succeeding (7). I used a suit, as a metaphor, to depict that nature will always be a part of us(8) even when we tame the world(9.) Buildings are an example of humanity's need for order to the detriment of the surrounding environment 11. Doors are a gateway for humans to step outside in the untamed wild, yet, they also shield us and disconnect us from it 10. In work 13 I come to a rigid standstill which depicts that control is the barrier for harmony b/ween between humans and nature. The final work(15), after experimentation(14), represents the fading of the human race if deep consideration for nature is not embraced.



Image 1

Sustained Investigation

Height: 11.5 inches

Width: 16.5 inches

Material(s): Digital camera, Canon 70D Manual Mode, 50 mm lens to capture details of decaying daisies

Process(es): Set up to cast shadow. Lightroom used to emphasise skin texture, cold colors and shrivelled flowers.



Image 2

Sustained Investigation

Height: 16.5 inches

Width: 11.5 inches

Material(s): Digital camera, flowers. Attempt to connect to nature using my physical body and discarded flowers.

Process(es): Self-portraiture via phone, controlling camera. Experimentation w/ pose, light and composition.

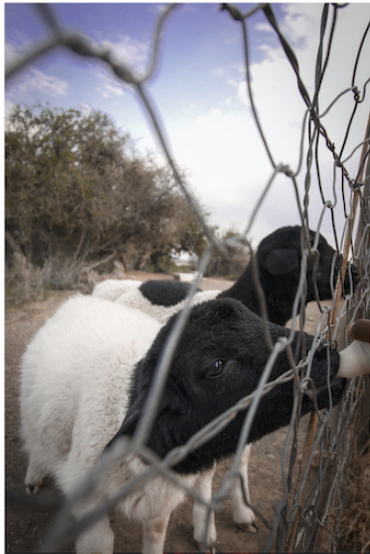


Image 3

Sustained Investigation

Height: 11.5 inches

Width: 16.5 inches

Material(s): Digital camera, family farm, bottle fed lambs, my environmentalist brother connecting w/ raw nature.

Process(es): Photographed farm scenes from lamb feeding to butchering for human consumption. Edited light in eyes.



Image 4

Sustained Investigation

Height: 11.5 inches

Width: 16.5 inches

Material(s): Digital camera, wide angle lens, abandoned farm hut, work horse paired w/ self, wearing fancy dress.

Process(es): Rode through farm. Photographed self at hut. Self-portraiture via phone, controlling camera.



Image 5

Sustained Investigation

Height: 16.5 inches

Width: 11.5 inches

Material(s): Digital camera, manual mode, wide angle lens. Contrast of broken structure w/ organic human and horse.

Process(es): Dug hole to set low angle view. Adventured farther from hut. Self-portraiture via CameraConnect.



Image 6

Sustained Investigation

Height: 11.5 inches

Width: 16.5 inches

Material(s): Digital camera, Canon 70D Manual Mode, self-portraiture to capture details of engulfing plants.

Process(es): Watched The Earthing Movie and attempted grounding. Photoshop used to repeat plant pattern.



Image 7

Sustained Investigation

Height: 4.23 inches

Width: 10 inches

Material(s): Digital camera, Canon 70D Manual Mode, portrait lens to capture details of letting go - dirt on feet

Process(es): Theory suggests walking barefoot can heal body. Connect vs. disconnect. Self-timer portrait.



Image 8

Sustained Investigation

Height: 11.5 inches

Width: 16.5 inches

Material(s): Black suit. Digital camera, wide angle lens to visualise metaphor of growth, straw, out of humanity.

Process(es): Read - Humanity and nature are not separate- depicted this. Black portrays human control in nature.



"By developing wild places and turning them into cities, humans have successfully paved many sections of "paradise," all in an effort to civilise the natural world. Building shelters to protect ourselves from harsh natural elements is something that humans have practiced for thousands upon thousands of years. Doing so helped us to survive and thrive, but we might have let the whole civilisation of the planet get a bit out of hand." - K. Good

Image 9

Sustained Investigation

Height: 11.5 inches

Width: 16.5 inches

Material(s): Digital camera, wide angle lens to encompass decaying building, flowers and black suit. Coat hanger.

Process(es): Read article on disconnect from nature. Picked flowers and put in abandoned building as a metaphor.



Image 10

Sustained Investigation

Height: 11.5 inches

Width: 16.5 inches

Material(s): Digital camera, Canon 70D Manual Mode, wide angle lens to capture the ext/interior decay.

Process(es): Adventured to find the effects climate change has had on farms. Adobe used to detail peeled paint.



"Southern Africa is heating at 2°C per century, twice the global average. In the Northern Cape, as elsewhere, Climate change is no longer a future event, but a daily reality. Since 2015, a climate change induced drought has wrought devastating economic, social and political consequences: agriculture is collapsing, and both emerging and commercial farmers are abandoning their farms."

- D. Cupido and T. Taylor

Image 11

Sustained Investigation

Height: 11.5 inches

Width: 16.5 inches

Material(s): Digital camera, wide angle canon lens to capture the details of abandoned materials and dead tree.

Process(es): Walked out abandoned building img. 10 to find detrimental human-induced effects on the environment.



Image 12

Sustained Investigation

Height: na

Width: na

Material(s): Photo of workbook including process work, guiding research on nature's healing power and color scheme

Process(es): Experimented w/ creating composite images via layering, balance placement and mirroring in photoshop.



Image 13

Sustained Investigation

Height: 11.5 inches

Width: 16.5 inches

Material(s): Digital camera, wide angle lens to emphasise open degraded landscape and the movement of girl.

Process(es): Final revised work photoshop. Depicts both freedom and constriction given to us by nature.

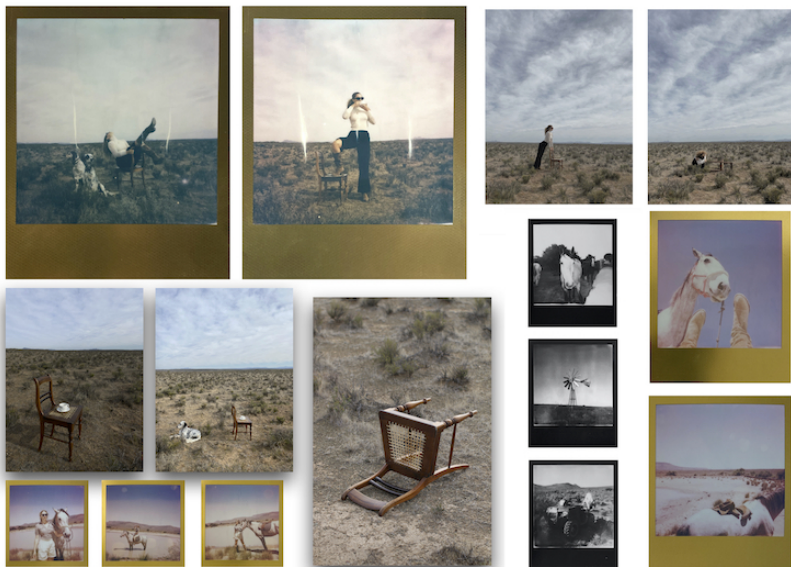


Image 14

Sustained Investigation

Height: na

Width: na

Material(s): Process work displayed together to show experimentation for final idea - humans reliance on nature.

Process(es): Used film polaroid to help connect to present. Explored humans historical relationship with horse.



Image 15

Sustained Investigation

Height: 11.5 inches

Width: 16.5 inches

Material(s): Film polaroids, wooden chair as a metaphor for nature, posh clothes to contrast organic background.

Process(es): Dual-exposure setting to represent fading of humans w/ full reliance on nature. Scanned images.

Sustained Investigation Scoring Rubric, Row B

B	Practice, Experimentation, and Revision		
	1	2	3
	Visual evidence of practice, experimentation, OR revision; however, visual evidence does not relate to a sustained investigation.	Visual evidence of practice, experimentation, OR revision relates to the sustained investigation. AND Written evidence relates to the visual evidence of practice, experimentation, OR revision.	Visual evidence of practice, experimentation, AND revision demonstrates development of the sustained investigation. AND Written evidence describes how the sustained investigation shows evidence of practice, experimentation, OR revision.

Scoring Criteria

Row B: **Practice, Experimentation, and Revision** – Score: 3

Visual evidence of practice, experimentation, **AND** revision **demonstrates development** of the sustained investigation.

AND
Written evidence **describes how** the sustained investigation shows evidence of practice, experimentation, **OR** revision.

Score Rationale

The visual evidence demonstrates practice, experimentation, AND revision, indicating the development of the sustained investigation. The works show practice and experimentation with compositions, moving away from single to multi-image presentations to tell a story (images 2, 3, 4, 9, and 15). The addition of prose to add contextual layers to images 9 and 11 further demonstrates development. Images 12 and 14 show practice, experimentation, AND revision toward arriving at the final images 13 and 15.

This portfolio clearly shows the visual evidence of practice, experimentation, AND revision demonstrates the development of the sustained investigation, AND the written evidence describes how the sustained investigation reveals evidence of practice, experimentation, OR revision. The writing describes how the sustained investigation (“humans’ emotional & physical (dis)connect from nature.”) shows evidence of practice, experimentation, OR revision. “I experimented and revised with locations, props and poses to arrive at [the] strongest intent & composition for the finals.” The visual evidence presents this intention. Another quote that cites experimentation and revision is “[t]he final work (15), after experimentation(14), represents the fading of the human race if deep consideration for nature is not embraced.” The written evidence describes additional experimentations with symbols and metaphors to further the inquiry of the sustained investigation. “[A] suit, as a metaphor, to depict that nature will always be a part of us(8) even when we tame the world(9).” Also, “[b]uildings are an example of humanity’s need for order to the detriment of the surrounding environment(11).” Throughout the written evidence, the text describes many occasions of practice, experimentation, and revision.



Image 9



Image 15

Sustained Investigation Score: Row A: Score 3 • Row B: Score 3 • Row C: Score 3 • Row D: Score 3