

# 2021 AP<sup>®</sup> Art and Design

## 2-D Art and Design Sustained Investigation

### Row A: Inquiry

#### Written Evidence

Sustained Investigation

Identify the question(s) or inquiry that guided your sustained investigation.

Describe how your sustained investigation shows evidence of practice, experimentation, and revision guided by your question(s) or inquiry.

Response:

Loosing, the most confusing of all emotions yet the simplest to understand. Loosing can be seen in many different outcomes as there is many things to loose. Whether it be yourself or another, however the act of loosing can be uncontrollable and be seen as a negative. My pieces show loosing as confusion and hatred, or lack there of. Wires in all my pieces show holding someone or something back from there "goal" which could be trying to be normal. Red shows hatred as blue shows sanity. For instance a piece as confusing as my piece "loosing concentration" the lines show holding your eyes back from being able to focus on what the main goal is. This represents ADHD as it is very difficult to stay on one thing for too long. Another example is the color red, this color links all of my pieces such as my piece "loosing emotion". The red shows the face you put on so other's cannot see what it is you're trying to hide, that being nothing. The wires in that piece also show the torture you have to put your body through to seem fine or normal in others vision. Loosing is not easy in the slightest as so much can be lost, but its how you show your feelings that help the most.



## Image 1

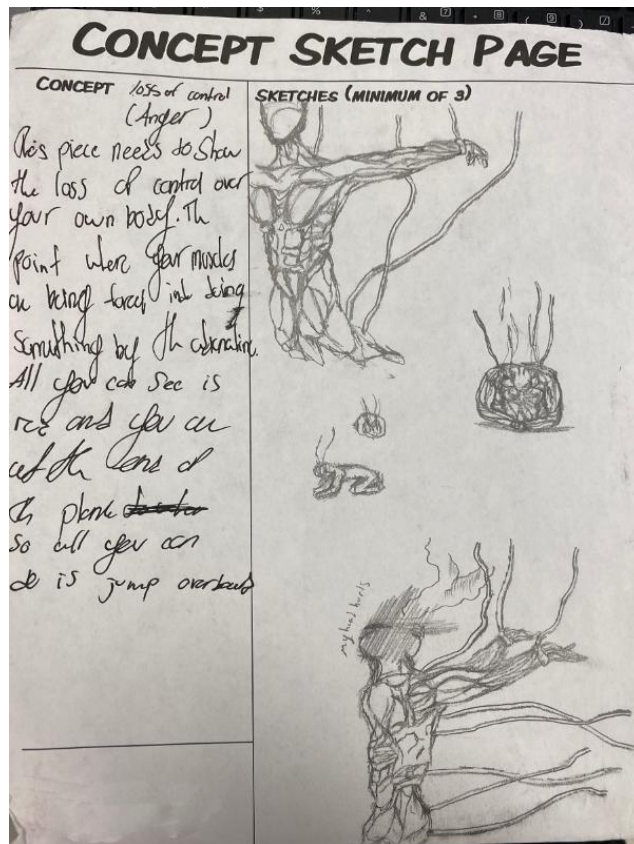
Sustained Investigation

Height: 12 inches

Width: 9 inches

Material(s): Prisma color, graphite, red sharpe

Process(es): Body perspective, color theory and experimental thoughts with anger. Using wires to hold back.



## Image 2

Sustained Investigation

Height: NA

Width: NA

Material(s): pencil to paper

Process(es): Different ways to show being controlled to help understand the wrath.



### Image 3

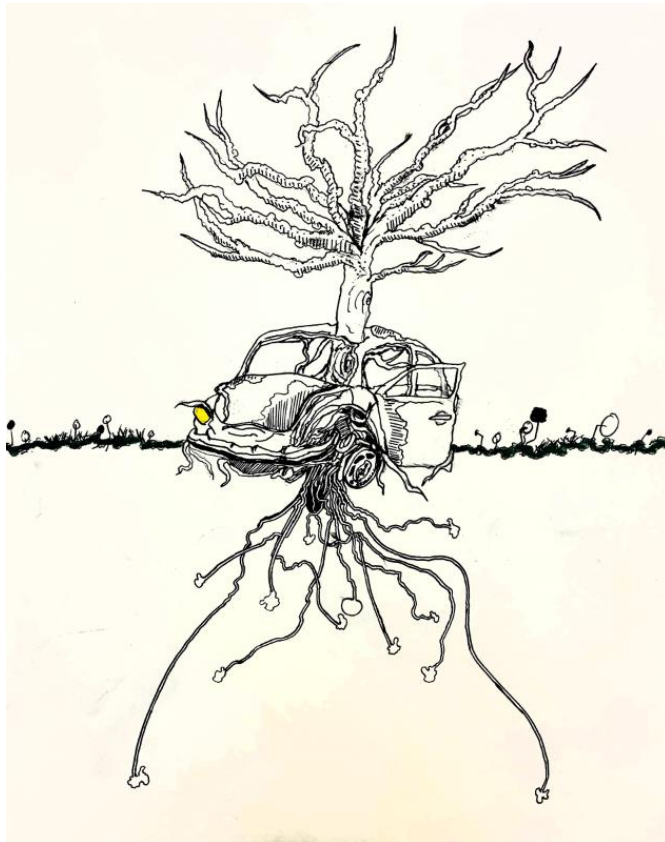
Sustained Investigation

Height: NA

Width: NA

Material(s): pencil to paper

Process(es): I needed references for body shape and flow of the pulsing muscles.



### Image 4

Sustained Investigation

Height: 14 inches

Width: 11 inches

Material(s): Prisma color, Muji Fountain pen

Process(es): Biological and mechanical depictions to understand growth through objects to represent my idea.



## Image 5

Sustained Investigation

Height: 14 inches

Width: 11 inches

**Material(s):** Red ink, black ink, Muji fountain pen

**Process(es):** Mechanical and cultural depictions to show the idea of having no personality within ones own body.



## Image 6

Sustained Investigation

Height: 12 inches

Width: 14 inches

**Material(s):** Blue ink, red sharpie, Crayola marker, green paint, Muji fountain pen

**Process(es):** Representation of internal battles to show weakness within yourself and life outside.



## Image 7

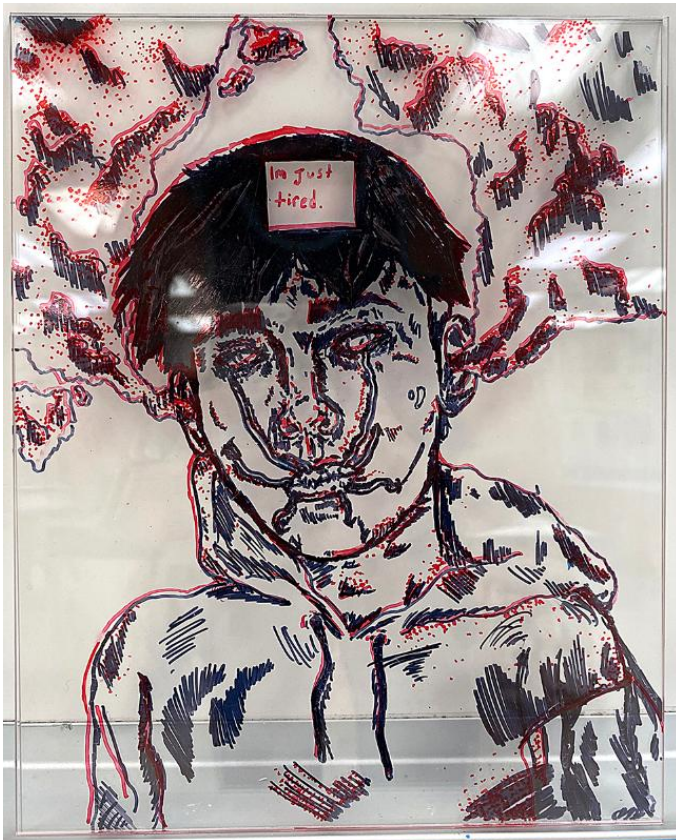
Sustained Investigation

Height: na

Width: na

Material(s): na

Process(es): na



## Image 8

Sustained Investigation

Height: 10 inches

Width: 8 inches

Material(s): Red sharpie, black paper

Process(es): Emotional emptiness represented through transparent material. thoughtful anger put into one person.



## Image 9

Sustained Investigation

**Height:** 10 inches

**Width:** 8 inches

**Material(s):** red sharpie, black sharpie

**Process(es):** One face over another to hide the lack of emotion with emphasis on holding someone to a standard.



## Image 10

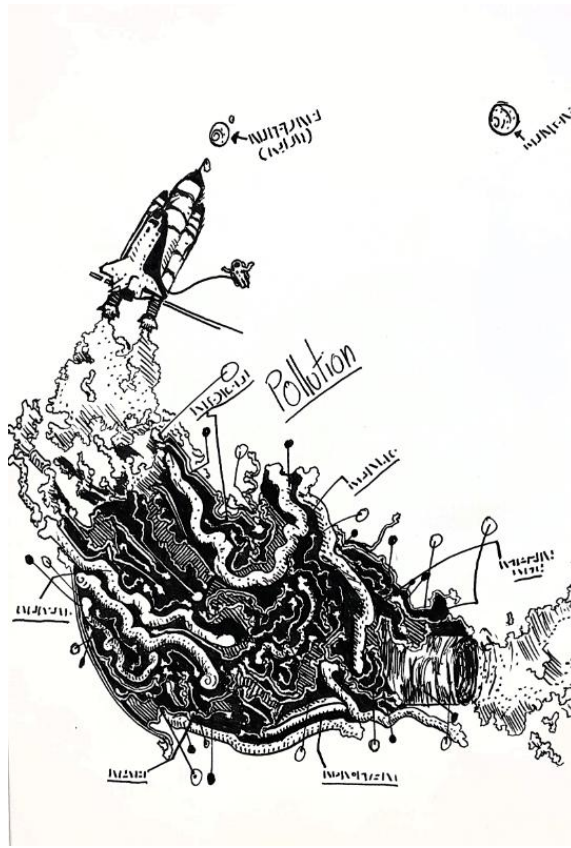
Sustained Investigation

**Height:** 14 inches

**Width:** 11 inches

**Material(s):** Prisma color, black ink, Muji fountain pen

**Process(es):** Psychological and mental representations to display fear in losing your own grasp on reality.



### Image 11

### Sustained Investigation

**Height:** 11 inches

**Width:** 10 inches

**Material(s):** Black ink, Muji fountain pen

**Process(es):** Planetary and political depictions to represent destruction on a large enough scale to move domains.



### Image 12

### Sustained Investigation

**Height:** 11 inches

**Width:** 10 inches

**Material(s):** black ink, Muji fountain pen

**Process(es):** Large processes of disorders and struggles to show confusion and discomfort.



## Image 13

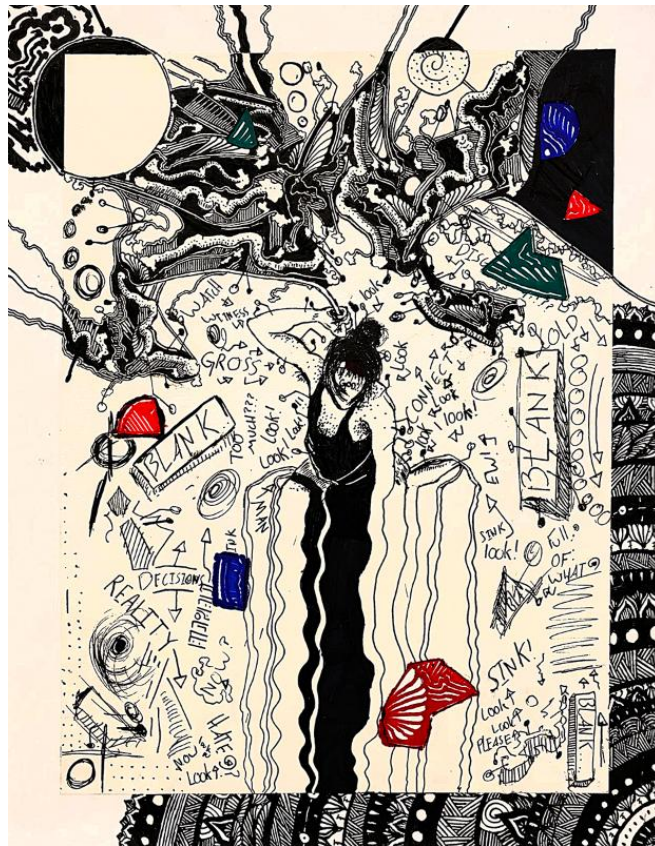
Sustained Investigation

Height: 14 inches

Width: 11 inches

**Material(s):** prisma color, black ink, Muji fountain pen

**Process(es):** The discomfort and agony while pushing the limits of the human psyche to a point of hate.



## Image 14

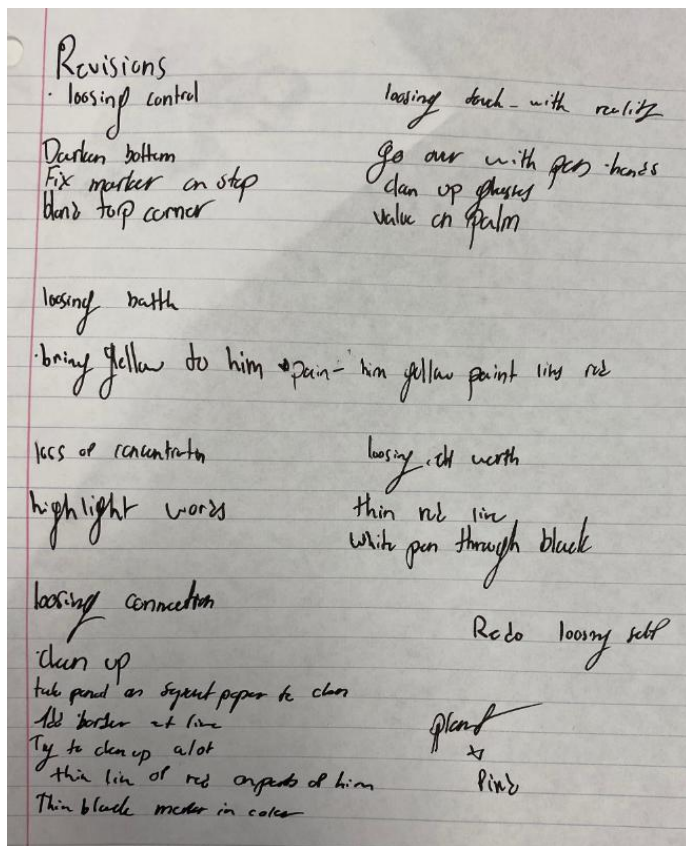
Sustained Investigation

Height: 14 inches

Width: 11 inches

**Material(s):** Red, blue, green, and black sharpie, black ink, muji fountain pen.

**Process(es):** Loosing connection and pain shown through confusion and self doubt.



## Image 15

Sustained Investigation

Height: na

Width: na

Material(s): pencil to paper.

Process(es): critique to help better and create more detailed and understandable pieces.

## Sustained Investigation Scoring Rubric, Row A

A	Inquiry		
	1	<b>2</b>	3
	Written evidence <b>identifies</b> an inquiry but visual evidence <b>does not relate</b> to that inquiry. <b>OR</b> Written evidence <b>does not identify</b> an inquiry.	Written evidence <b>identifies</b> an inquiry that <b>relates to</b> the sustained investigation. <b>AND</b> Visual evidence <b>demonstrates</b> the sustained investigation.	Written evidence <b>identifies</b> an inquiry that <b>guides</b> the sustained investigation. <b>AND</b> Visual evidence <b>demonstrates</b> the sustained investigation.

### Scoring Criteria

Row A: **Inquiry** – Score: 2

Written evidence **identifies** an inquiry that **relates** to the sustained investigation.

**AND**

Visual evidence **demonstrates** the sustained investigation.

### Score Rationale

In this portfolio, the written evidence identifies an inquiry that relates to the sustained investigation: “My pieces show losing as confusion and hatred, or lack there of.” And the visual evidence demonstrates the sustained investigation. The idea, however, does not guide the investigation. The identifying question of “losing” (student states this as “loosing”) is too broad to lead to a more focused search and discovery.

The written evidence identifies many sub-ideas for each work, such as anger (image 1, 8, and 9), hatred (image 13), confusion (image 14), internal/ external struggles (image 6), planetary and political strife (image 11), and psychological struggles (image 10); all covered by the umbrella of “losing.”

The visual evidence does relate to ideas found in the written evidence, but overall the concept is far too broad to lead discovery.



Image 1



Image 10

Sustained Investigation Score: **Row A: Score 2** • Row B: Score 2 • Row C: Score 2 • Row D: Score 2