

## 2021 AP<sup>®</sup> Art and Design

### 2-D Art and Design Selected Works, *Score 4*

#### Scoring Criteria

##### 2-D/3-D/Drawing Art and Design Skills

Visual evidence of **good**  
2-D/3-D/Drawing **skills**.

##### Materials, Processes, and Ideas

**Visual relationships** among  
materials, processes, and ideas  
are **clearly evident**.

##### Writing

Written evidence **identifies**  
materials, processes, and ideas.

#### Rationale for Score

Throughout these five pieces, there is visual evidence of good 2-D design skills, including ranges of color balance and value (image 1), contrast, rhythm and movement (image 3), and figure-ground, texture, and juxtaposition (image 5). The use of focal points in the images is successful and helps lead the viewer through the design. The compositions in each image are dynamic and work at a good level.

Visual relationships among materials, processes, and ideas are clearly evident. Elements of fantasies are the ideas in the written evidence. There are connections from the written to the visual evidence and identifiable processes seen in the work. Materials used in the images (watercolor, gouache, pencils, pens) communicate ideas proficiently. In image 1 the dynamic placement of the heads and the curved shapes integrate with the accompanying circular forms. "How do we see others in our fantasies...How do outside factors in our lives appear in our fantasies" (image 1) provides narrative information for the viewer. In image 5 the written evidence "Demonstration of personal interaction between self and other in fantasy..." together with the use of materials and processes approaches but does not demonstrate synthesis.

The written evidence in this portfolio identifies materials, processes, and ideas.



## Work 1

Selected Works

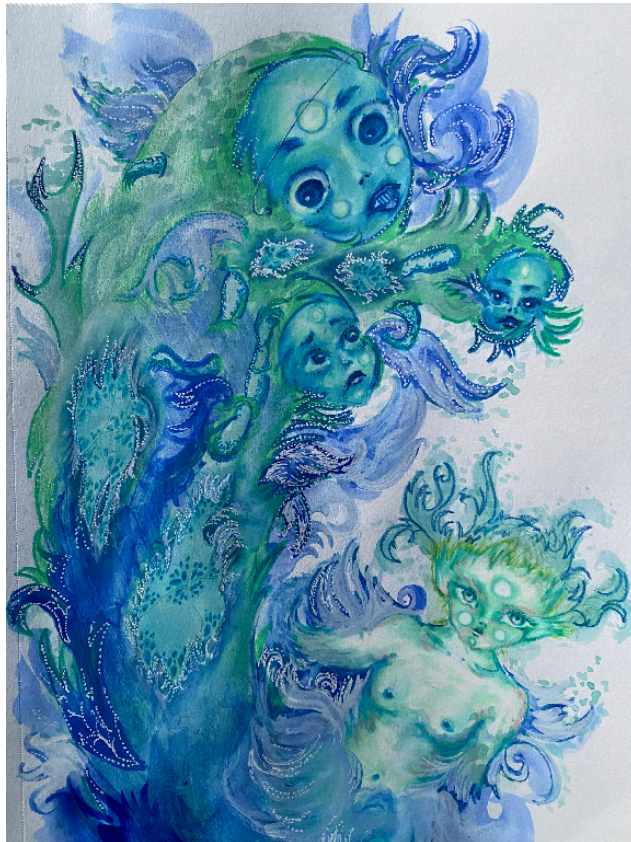
**Height:** 9 inches

**Width:** 12 inches

**Idea(s):** How do we see others in our fantasies? How do outside factors in our lives appear in our fantasies?

**Material(s):** Gouache, Gel Pen, Colored Pencil, Pen.

**Process(es):** Trace outline with pen, then fill with gouache and colored pencil. Place ornate details with gel pen



## Work 2

Selected Works

**Height:** 10 inches

**Width:** 7 inches

**Idea(s):** What impact does our external and internal conflict have on our personal fantasies and thoughts?

**Material(s):** Gouache, Colored Pencil, Gel Pen, Pen.

**Process(es):** Flat layer of color with gouache, then trace outline. Add depth and details with colored pencil/pen.





## Work 3

Selected Works

**Height:** 24 inches

**Width:** 18 inches

**Idea(s):** Demonstrates character in the beginning phases of their fantasy, a point they are still isolated.

**Material(s):** Watercolor, Salt, Glitter, Pen, Gel Pen, Colored Pencil, Sharpie, Alcohol

**Process(es):** Outline with pen and face colored with pencil. On top, watercolor and alcohol blooms added with pen.



## Work 4

Selected Works

**Height:** 9 inches

**Width:** 6 inches

**Idea(s):** Elements of reality fantasized. The character is still rooted in reality, but the background is not.

**Material(s):** Watercolor, Gel Pen, Pen, Colored Pencil.

**Process(es):** Layer of red watercolor. Colored pencil with head drawn on top, then gel pen details added for depth



## Work 5

Selected Works

**Height:** 12 inches

**Width:** 9 inches

**Idea(s):** Demonstration of personal interaction between self and other in fantasy. External factors fantasized

**Material(s):** Gouache, Pen, Gel Pen, Colored Pencil.

**Process(es):** Flat layer of gouache, then outline with pen. Details rendered with colored pencil and gel pen.