

2019 AP® Central Samples

2-D Art and Design Sustained Investigation (Concentration) Score 5

Image Dimensions Media

1	13 x 9	watercolor, color pencil
2	24 x 18	oil paint, acrylic paint
3	10 x 8	watercolor, color pencil, gouache
4	15 x 7	color pencil, watercolor, gouache
5	24 x 18	acrylic paint, oil paint
6	18 x 24	acrylic paint, oil paint, marker
7	19 x 10	watercolor, color pencil
8	42 x 26	watercolor, color pencil, wood panel
9	20 x 16	watercolor, color pencil, gouache
10	10 x 16	color pencil, watercolor, gouache, pen
11	20 x 18	watercolor, color pencil
12	19 x 16	acrylic paint, oil paint

All measurements are in inches

Student Commentary

1. The central idea of my concentration demonstrates the rough upbringings, and harsh realities of a Mexican household.

2. In the beginning of my concentration it shows real life situations and how they impact our everyday life, and unlike the beautiful celebrations of Mexican culture and how colorful the celebrations are portraying a life of a Mexican Family. I decided to show the grimy backlit life that happens when coming from immigrant parents. Which is shown through the gross settings and colors that are used throughout my pieces. I also have a series of roaches that is the unifying symbol. Through the end I've shown more current situations, like the harmful work environment and the struggles of doing everyday duties.

Portfolio Score: 5

Score Rationale

- The sustained investigation clearly demonstrates an original vision and innovative ideas and/or risk-taking. Image 8 demonstrates the daily routine of hand washing and hanging drying clothes. A pair of men's underwear and crew socks are drawn using colored pencil and watercolor; they are then cut out and hung on a wood shutter with the use of twine and clothespins. Innovation is seen in its utilization of low relief, as well as its use of mixed media. The work clearly demonstrates an original vision in its depiction of mundane chores.
- An evocative, engaging theme is sustained through most of the work in both its content and stylistic execution. Neutral grimy colors, specific 2-D design solutions, and repeated symbolic images such as the roaches are used throughout the portfolio. These visual devices are used to engage the viewer in a narrative that depicts the harsh realities of life in a Mexican immigrant household.
- The work shows a thorough understanding and effective application of 2-D design principles. In image 6 interest is added to cactus house plants with the repetition of shape, colors and materials; along with variety in organic forms. The plants are emphasized in a contrasting white, depicted with only the contours of its branches, existing in a flat space outside the rest of the work.

- In general, the work is technically excellent; materials and media are used effectively to express ideas. The investigation of the topic provides convincing evidence of informed decision making and discovery. In image 4 color pencil, watercolor, and gouache are effectively used to express ideas. Informed decision making is evident in the proportions of the space. It forces the female figure in close proximity to the roaches crawling under the surface in which she is preparing a meal. Despite the confinement of the kitchen and its unfortunate inhabitants, the character depicts a cheerful disposition.

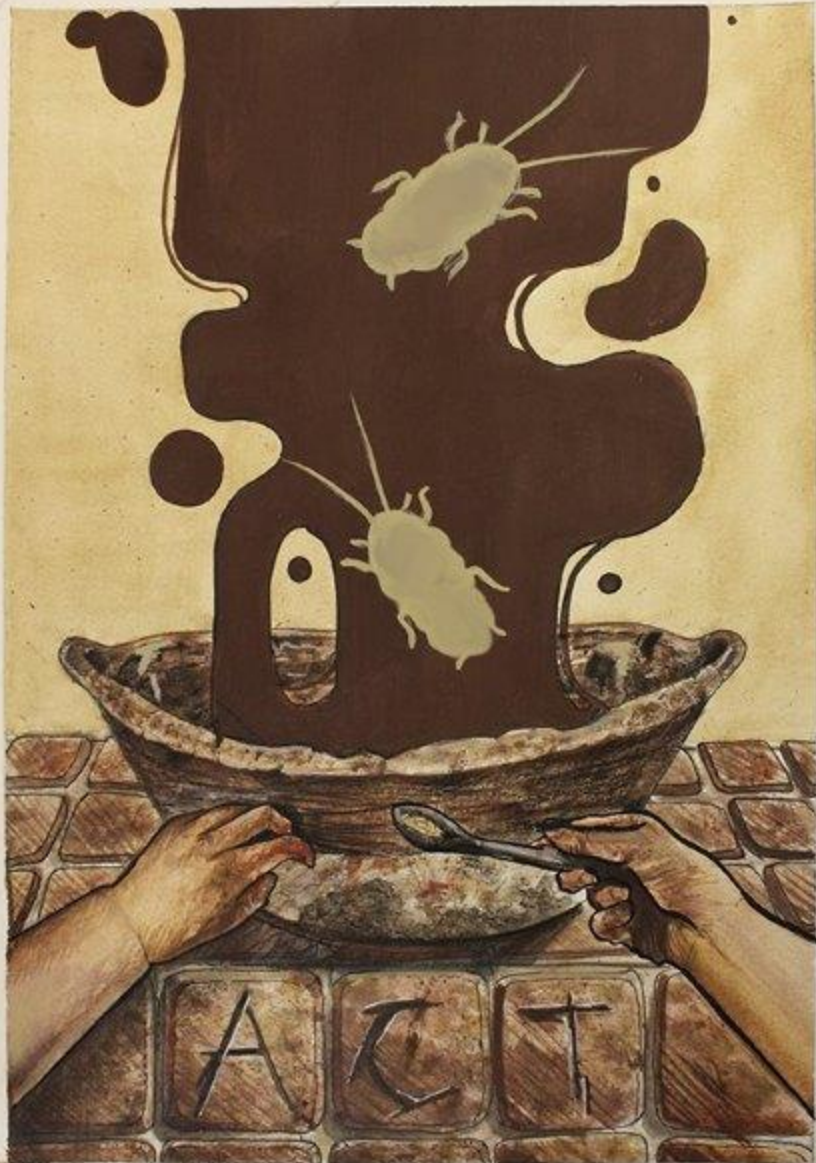
49



LAS MANOS
TRABAJADORAS

SERÁ MEJOR







Venimos
a
Trabajar
→

SI
SE
PUEDE

mantenerla
FUERTE







WE
ARE
STRONG



