



2025 AP[®] Drawing Art and Design

Sustained Investigation

Analytic Scoring Rubric and Score Rationale

Row D—Score 3

Written Evidence

Sustained Investigation

Identify the inquiry that guided your sustained investigation.

Response:

How can I turn how I feel about a person into a nontraditional and abstract portrait of them, while still capturing their energy? Before this year, I typically worked in realism, but I would find myself fixating on the details and unable to actually do any creative exploration. After taking an AP Art History class last year, I found myself more appreciative of the emotions meaningful abstract art can evoke. My attempts at using color, line, and text to represent friends and teachers invite me to really consider and deconstruct my relationship with the people represented by my art.

Describe ways your sustained investigation developed through practice, experimentation, and revision.

Response:

Practice: Investigated/utilized different color schemes, patterns, and original phrases. Experimentation: Materials, bc 10's oil pastel base was too messy to represent a neat person + bad for layering details. I switched to gouache but had issues w/ texture/warp, and settled on alcohol markers, colored pencils, + micron/paint pens. Revision: Changed to a circular template to play w/ negative space and make the diptych fit together (13, 14). Also, adding connection in pieces through color + pattern to illustrate relationships - portraits 4 and 6 are twins, 8 and 15 are best friends.



Image 1

Sustained Investigation

Height: 11

Width: 8.5

Materials:

Archival paper, alcohol marker, oil
colored pencil, micron pen, paint pen

Process(es):

Illustrated portrait of my English teacher
and advisor for four years in the
abstract.

Use of Digital Tool(s): No



Image 2

Sustained Investigation

Height: 11

Width: 8.5

Materials:

Archival paper, alcohol marker, oil
colored pencil, micron pen, paint pen

Process(es):

Illustrated portrait of my calculus teacher
in the abstract.

Use of Digital Tool(s): No



Image 3

Sustained Investigation

Height: NA

Width: NA

Materials:

Photo of interview process between artist and subject

Process(es):

Talking with the subject of the portrait, making notes for revisions. One of the twins.

Use of Digital Tool(s): No



Image 4

Sustained Investigation

Height: 11

Width: 8.5

Materials:

Archival paper, alcohol marker, oil
colored pencil, micron pen, paint pen

Process(es):

Illustrated portrait of my friend in the
abstract. One of the twins.

Use of Digital Tool(s): No



Image 6

Sustained Investigation

Height: 11

Width: 8.5

Materials:

Archival paper, alcohol marker, oil
colored pencil, micron pen, paint pen

Process(es):

Illustrated portrait of a classmate and
new friend in the abstract. One of the
twins.

Use of Digital Tool(s): No

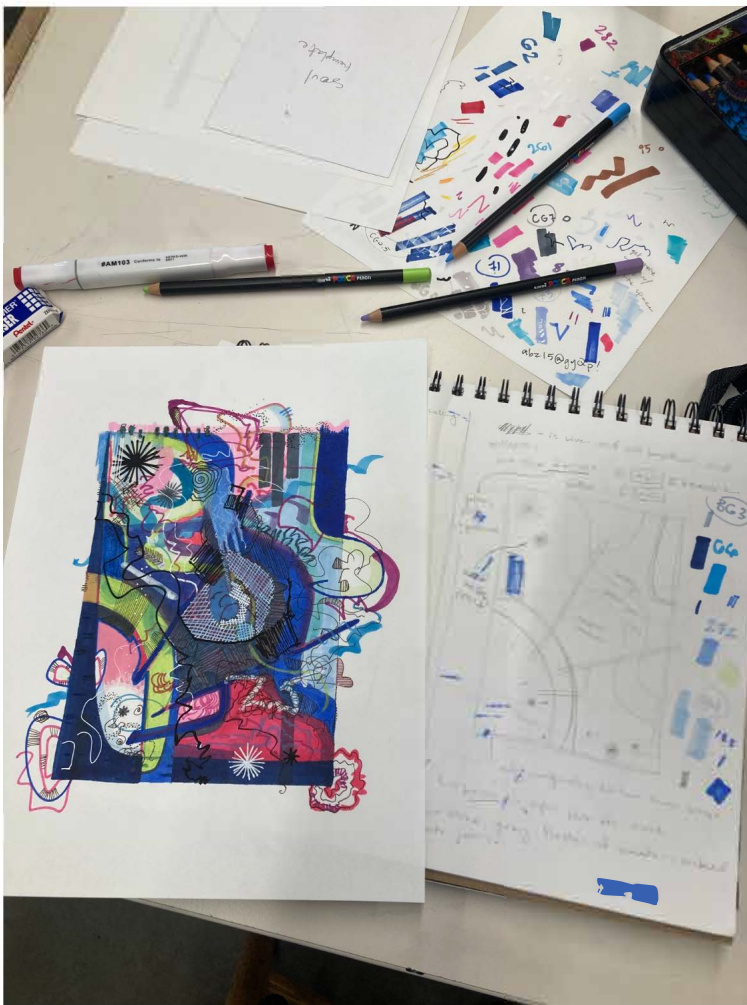


Image 7

Sustained Investigation

Height: NA

Width: NA

Materials:

Sketchbook page, archival paper,
alcohol marker, oil colored pencil, micron
pen, paint pen

Process(es):

Composition ideation, reference sketch
and color swatches to create the portrait.

Use of Digital Tool(s): No



Image 8

Sustained Investigation

Height: 11

Width: 8.5

Materials:

Archival paper, alcohol marker, oil
colored pencil, micron pen, paint pen

Process(es):

Illustrated portrait of my friend in the
abstract.

Use of Digital Tool(s): No

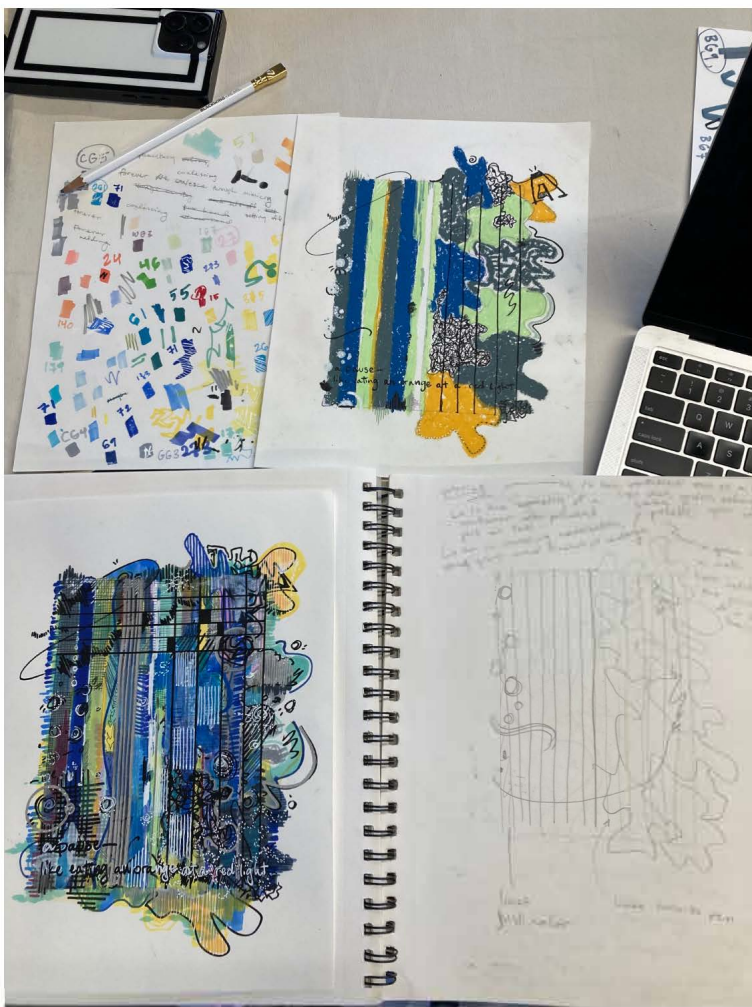


Image 9

Sustained Investigation

Height: NA

Width: NA

Materials:

Sketchbook page, archival paper,
alcohol marker, oil colored pencil, micron
+ paint pen, oil pastel

Process(es):

Iterations of an illustrated portrait, from
sketch, to the first version, to the revised
second one.

Use of Digital Tool(s): No



Image 10

Sustained Investigation

Height: 11

Width: 8.5

Materials:

Archival paper, oil pastel, paint pen.

Later switched to marker (didn't like texture of this).

Process(es):

Illustrated portrait of my friend in the abstract. First iteration.

Use of Digital Tool(s): No

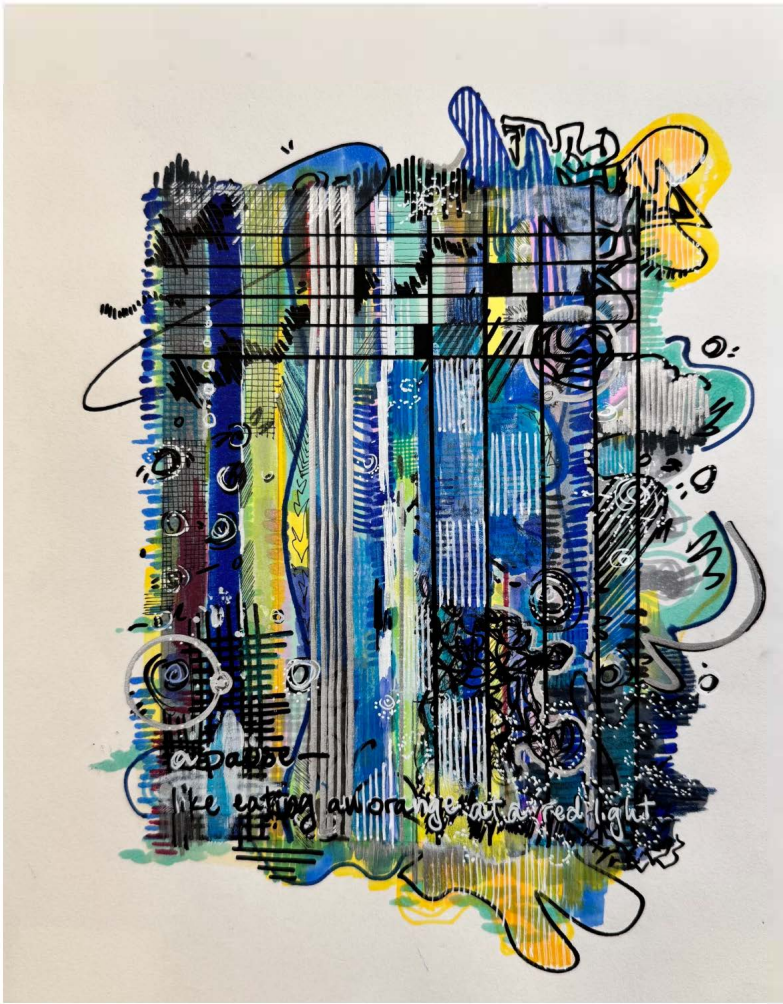


Image 11

Sustained Investigation

Height: 11

Width: 8.5

Materials:

Archival paper, alcohol marker, oil
colored pencil, micron pen, paint pen

Process(es):

Illustrated portrait of my friend in the
abstract. Second iteration.

Use of Digital Tool(s): No



Image 12

Sustained Investigation

Height: NA

Width: NA

Materials:

Archival paper, alcohol marker, oil
colored pencil, micron pen, paint pen

Process(es):

Working on the diptych in tandem to
balance the compositions and colors of
the pieces.

Use of Digital Tool(s): No



Image 13

Sustained Investigation

Height: 11

Width: 8.5

Materials:

Archival paper, alcohol marker, oil
colored pencil, micron pen, paint pen

Process(es):

Illustrated portrait of my chemistry
teacher in the abstract w/ a nod to
atomic reactions. 1 of 2.

Use of Digital Tool(s): No

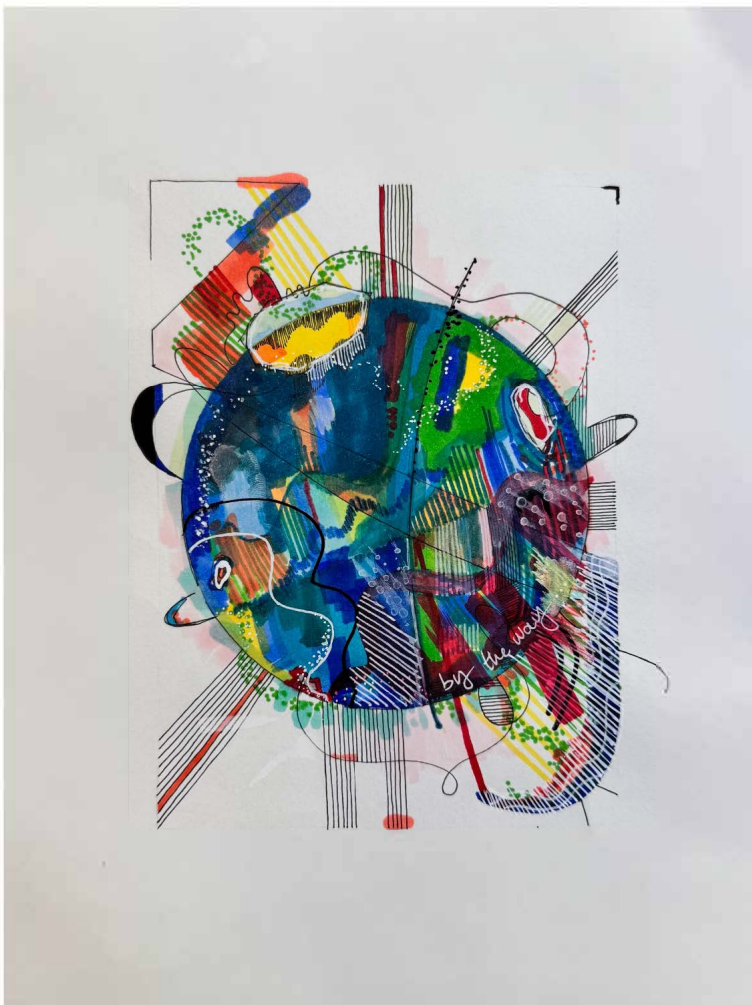


Image 14

Sustained Investigation

Height: 11

Width: 8.5

Materials:

Archival paper, alcohol marker, oil
colored pencil, micron pen, paint pen

Process(es):

Illustrated portrait of my chemistry
teacher in the abstract w/ a nod to
atomic reactions. 2 of 2.

Use of Digital Tool(s): No



Image 15

Sustained Investigation

Height: 11

Width: 8.5

Materials:

Archival paper, alcohol marker, oil
colored pencil, micron pen, paint pen

Process(es):

Illustrated portrait of my best friend of
four years in the abstract.

Use of Digital Tool(s): No

Analytic Scoring Rubric Row D: Drawing Skills

1	2	3
<i>Visual</i> evidence of rudimentary and moderate drawing skills.	<i>Visual</i> evidence of moderate and good drawing skills.	<i>Visual</i> evidence of good and advanced drawing skills.

Score Rationale

This sustained investigation demonstrates substantial evidence of good to advanced drawing skills, resulting in a score of 3 for Row D. The confident and expressive use of line, color, and composition supports the development of abstract portraits that are both emotionally resonant and visually dynamic.

Each image relies on a strong foundation of line quality and mark-making. A variety of lines—vertical, horizontal, diagonal, and curving—are used with control and purpose. In many cases, these lines vary in width, density, and rhythm to create visual contrast and establish structure within the image. For example, in Image 1, a sequence of diamond shapes runs diagonally through the composition. Each diamond contains a unique linear pattern, and together they form a bold directional movement. Surrounding these forms, layers of horizontal and vertical marks create texture; while curving and circular lines provide contrast. The high level of control over mark placement and layering creates a clear sense of surface development.

Though all works share a rectangular format, many images break that boundary, adding energy to the composition. In Image 8, for instance, lines of various colors and widths extend beyond the central form in an expressive, playful way. Image 14 features a dominant circular form, making the rectangle feel less rigid. Subtle radial lines extending to the edges quietly define the format, while maintaining visual movement across the image.

Color is used with confidence to organize space, emphasize shape, and direct the eye. In Image 2, the upper half of the composition is divided into large green and rust-colored fields that contrast the dense circular area in the center. Within that circle, energetic lines and patches of saturated color are layered with white linear details. The combination of graphic color fields and intricate mark-making creates balance and contrast across the surface. A ladder-like shape visually connects the two-color zones and draws attention upward, demonstrating thoughtful spatial design and compositional planning.

Across the portfolio, choices related to space and structure are carefully considered, even in the absence of traditional perspective or modeling. Foreground, middle ground, and background are suggested through overlapping forms, shifts in value, and density of marks. While there is not an emphasis on light and shade to describe form in a realistic sense, value and contrast are used intentionally to create emphasis and unity.

Summary: This body of work demonstrates good to advanced drawing skills through confident and consistent use of line, mark-making, surface, space, light and shade, and composition. The visual evidence across the sustained investigation reflects a high level of control and intentionality in the application of drawing skills, supporting a score of 3 for Row D.



Image 1



Image 14

Sustained Investigation Score: Row A: Score: 3• Row B: Score: • Row C: Score: 3• **Row D: Score: 3**