



2025 AP[®] Drawing Art and Design

Sustained Investigation

Analytic Scoring Rubric and Score Rationale

Row D—Score 2

Written Evidence

Sustained Investigation

Identify the inquiry that guided your sustained investigation.

Response:

My portfolio focused on memorable experiences that have lead me to today. I investigated the following inquires: 1) How can I convey memorable changes and events in my life through mark-making and textiles? 2) Working predominately in textiles, how can I integrate other assorted media and drawing techniques to convey my ideas? I relied on 2 things throughout this investigation: 1) Personal photo references of life events, and 2) My experiences working as a costume designer in school and local theatre. My goal was to combine the separate art forms that I love into 1 cohesive portfolio.

Describe ways your sustained investigation developed through practice, experimentation, and revision.

Response:

I experimented with various textile & painting processes/media throughout my SI. I used acrylics to paint the main subject (1-7), to add more color and mark making where needed (1-7, 11), or to add more detail (7, 11). I explored with crocheting individual marks based on digital grids that I created in Procreate (8-9, 13-15). I focused on small detail marks with hand stitching (3-7) in some pieces, whereas I focused on larger shapes/forms in others (10, 12). My main goal was to develop a unique style that captures who I am not only as an artist, but as a person, and I feel like I achieved that.



Image 1

Sustained Investigation

Height: 9.5

Width: 13

Materials:

Repurposed fabric, acrylic paint, thread

Process(es):

Layered fabric, paint, and stitching
creates marks, figures are theatre kids
backstage during a show

Use of Digital Tool(s): No



Image 2

Sustained Investigation

Height: 11

Width: 8

Materials:

Repurposed fabric, acrylic paint, thread

Process(es):

Weaved portrait of younger self and current self to show aging, we keep our old selves as we age

Use of Digital Tool(s): No

Image 3

Sustained Investigation

Height: NA

Width: NA

Materials:

Repurposed fabric, acrylic paint, thread,
paper/digital sketches shows process
work or #4

Process(es):

Sketched from reference, cut fabric to fit
sketch, painted figures, hand stitched
together

Use of Digital Tool(s): No

Citation(s): Canva for composite image

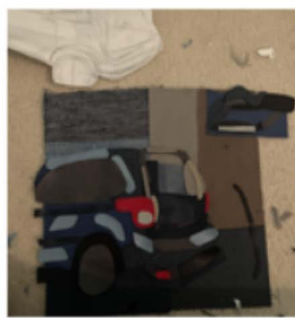
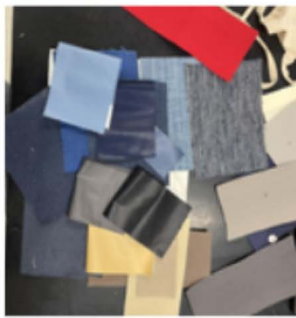
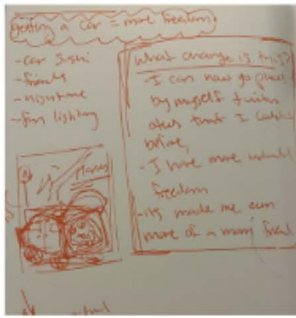




Image 4

Sustained Investigation

Height: 11.5

Width: 11.5

Materials:

Repurposed fabric, acrylic paint, thread

Process(es):

Collaged, hand stitched fabric to make car, painted figures on fabric, then stitched on, embroidered

Use of Digital Tool(s): No

Image 5

Sustained Investigation

Height: NA

Width: NA

Materials:

Paper sketch, repurposed fabric, acrylic paint, and thread shows process work for #6/7

Process(es):

Drew sketch from photo, chose fabric to match, cut fabric to size, painted sky to fill in stitches

Use of Digital Tool(s): No

Citation(s): Canva for composite image





Image 6

Sustained Investigation

Height: NA

Width: NA

Materials:

Repurposed fabric, acrylic paint, and thread shows close ups of #7

Process(es):

Hand stitched fabric to make marks, embroidered leaf details in trees, painted camper with acrylic

Use of Digital Tool(s): No



Image 7

Sustained Investigation

Height: 15

Width: 17.5

Materials:

Repurposed fabric, acrylic paint, thread

Process(es):

Found and cut fabric, hand stitched together, painted caper and some background, embroidered leaves

Use of Digital Tool(s): No



Image 8

Sustained Investigation

Height: NA

Width: NA

Materials:

Procreate, each square represents one single crochet stitch, I used the grid to crochet #9

Process(es):

Hand colored a digital grid of my house to use as a pattern for crocheting, colored each square

Use of Digital Tool(s): Yes

Digital Tool(s) used: Procreate



Image 9

Sustained Investigation

Height: 18

Width: 18

Materials: Yarn, wooden dowel

Process(es):

Crocheted using the single crochet stitch and colorwork, based off of the grid that

I made in #8

Use of Digital Tool(s): No



Image 10

Sustained Investigation

Height: 9

Width: 9

Materials:

Repurposed thread, fabric, bluebird
represents my mom's sign from God that
she is on the right path

Process(es):

Cut fabric, hand stitched together, hand
stitched to add details and form

Use of Digital Tool(s): No

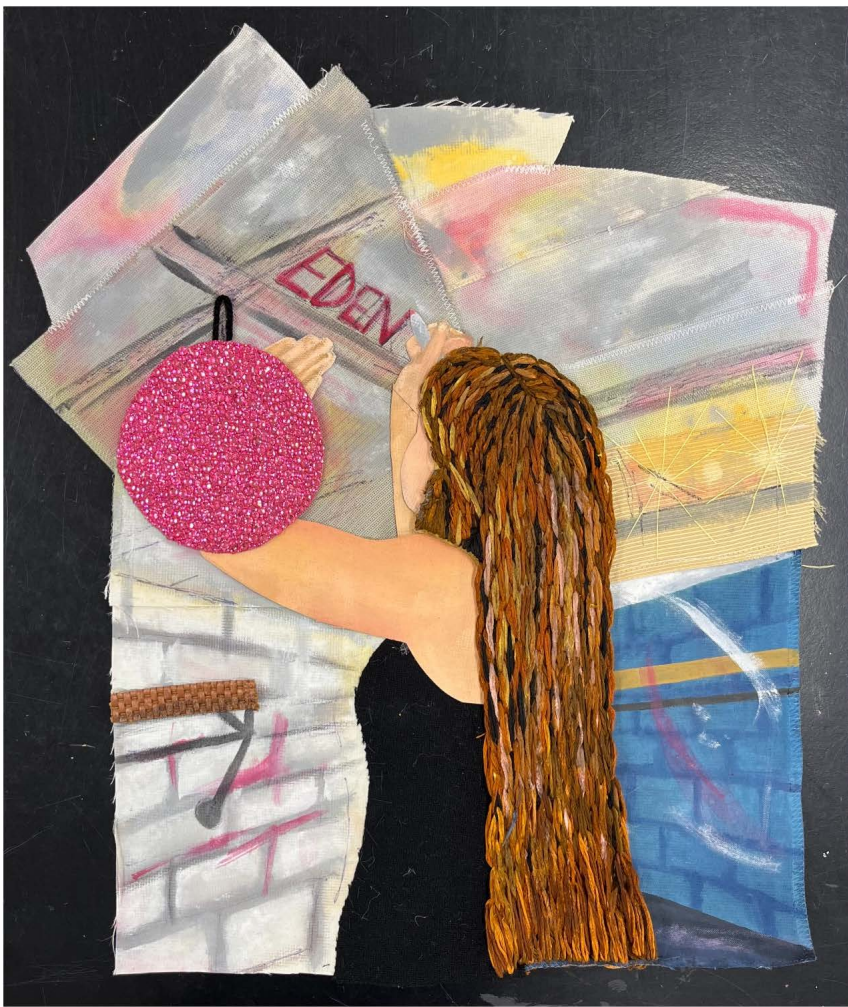


Image 11

Sustained Investigation

Height: 18

Width: 15

Materials:

Repurposed fabric, acrylic paint, yarn,
thread, gemstones

Process(es):

cut fabric, stitched together, painted
parts of figure and background,
embroidered hair, bedazzled

Use of Digital Tool(s): No

Image 12

Sustained Investigation

Height: 9.5

Width: 12

Materials: Repurposed fabric, thread

Process(es):

Cut fabric and glued in place based on sketch from photo, middle background work = selected works #2

Use of Digital Tool(s): No





Image 13

Sustained Investigation

Height: NA

Width: NA

Materials:

Procreate, each square represents one single crochet stitch that I used to crochet #14/15

Process(es):

Colored each square of digital grid of my parents and me at my college campus using procreate

Use of Digital Tool(s): Yes

Digital Tool(s) used: Procreate

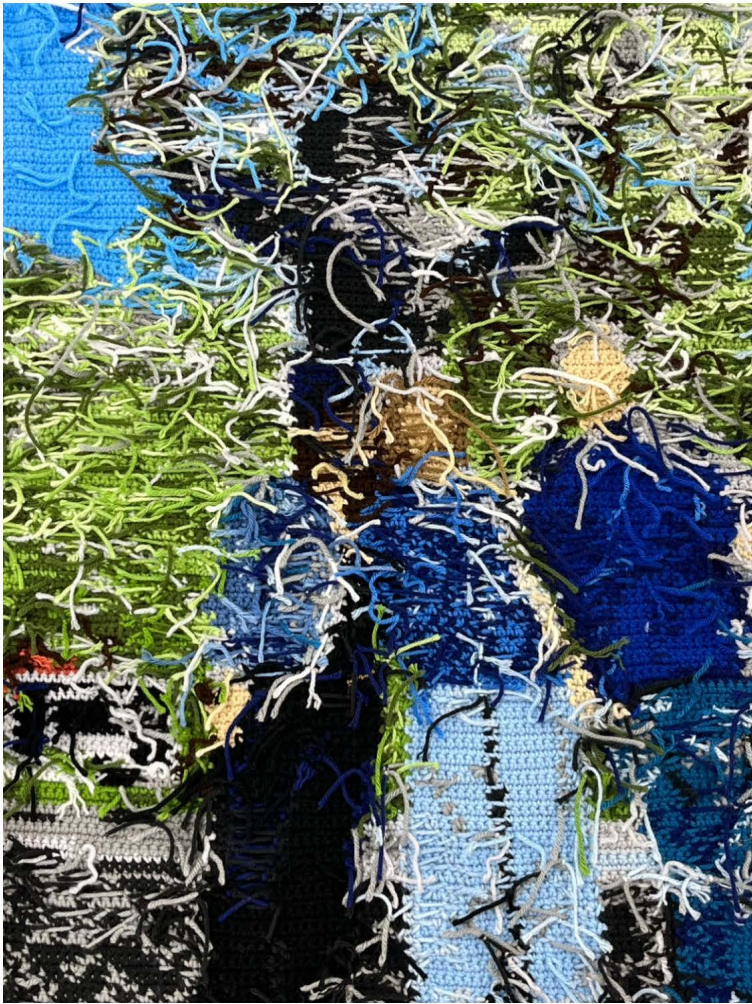


Image 14

Sustained Investigation

Height: 30

Width: 24

Materials: Yarn

Process(es):

Shows back of #15, changed colors frequently when crocheting, shows advanced colorwork

Use of Digital Tool(s): No



Image 15

Sustained Investigation

Height: 30

Width: 24

Materials: Yarn, wooden dowel

Process(es):

Crocheted using the single crochet stitch, based off the digital grid I drew in #13

Use of Digital Tool(s): No

Analytic Scoring Rubric Row D: Drawing Skills		
1	2	3
Visual evidence of rudimentary and moderate drawing skills.	Visual evidence of moderate and good drawing skills.	Visual evidence of good and advanced drawing skills.

Score Rationale

This sustained investigation takes a nontraditional approach to drawing by working predominantly with textiles. Across the portfolio, there is visual evidence of moderate and occasionally good drawing skills, resulting in a score of 2 for Row D.

Mark-making is a consistent strength throughout the body of work, particularly through the use of stitching. In Images 1, 2, 4, 7, 10, and 11, embroidery is used to define shapes, add texture, and introduce fine detail. In Image 4, multiple fabric types distinguish the components of a car and its environment. Stitching outlines the car's form and adds detail, such as in the tire. The portraits of people inside the car, painted directly onto fabric, become focal points. However, these portrait elements appear slightly disconnected from the rest of the image and might have been more visually integrated through additional stitched lines or surface embellishment.

There is some control of space, although depth is generally shallow. In Image 4, spatial recession is suggested through diagonals in the bumper and hatch. Foreground and background areas are defined by color variation. In Image 7, the centered composition places focus on the camper. This visual weight contrasts with the surrounding environment, where the background is built with textured fabrics and a variety of stitched lines that describe trees and foliage. The surface of the image is enriched by thread used to indicate different types of leaves, demonstrating attention to both texture and detail.

Images 9 and 15 are constructed using crochet techniques. In Image 9, the centered composition and flat figure placement limit the sense of space. In contrast, Image 15 shows stronger compositional planning through the off-center placement of figures and a clearer distinction between foreground, middle ground, and background.

While light and shade are not rendered through traditional shading techniques, some contrast is created through changes in color and fabric value. Overall, the textile-based process presents an inventive and expressive approach to drawing. The visual evidence shows a developing control of drawing skills through thoughtful application of composition, mark-making, surface variation, and spatial organization.

Summary: While some images demonstrate good drawing skill, the overall level of accomplishment remains moderate and varies across the portfolio. This inconsistency in the application of drawing skills supports a score of 2 for Row D.



Image 4



Image 7

Sustained Investigation Score: Row A: Score: 2 • Row B: Score: 3 • Row C: Score: 2 • **Row D: Score: 2**