



# **2025 AP<sup>®</sup> Drawing Art and Design**

**Sustained Investigation**

**Analytic Scoring Rubric and Score Rationale**

**Row C–Score 2**

# Written Evidence

## Sustained Investigation

Identify the inquiry that guided your sustained investigation.

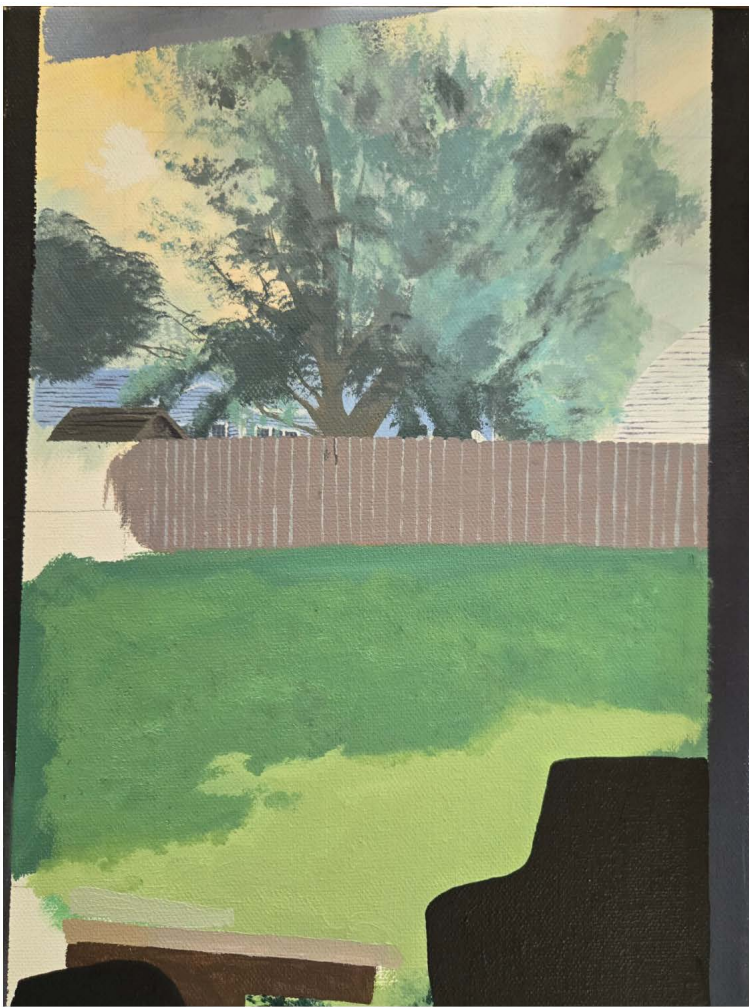
Response:

Nostalgia is an emotion that comes in unexpected ways and has us reflect on the past, in both positive and negative ways, or even simply neutral. My sustained investigation explores this reflection on my own life, and what nostalgia means to me. To me I find myself nostalgic not for material items, as many people do, but rather times or places that are reminiscent of a past I was once familiar with, but now do not have access to. I look to lighting to guide my artwork, for it brings to life the world around us.

Describe ways your sustained investigation developed through practice, experimentation, and revision.

Response:

Originally I wanted to explore what nostalgia meant to different people, however when I got started I shifted my perspective more inwards. Looking at the feelings of other people, I found myself already trying to connect it to myself, or choosing things that I could also relate to. So I ran with that. I take much of my inspiration from my past, into the unexplained tightness that I feel in my chest at seemingly random times, and translating that into a piece of artwork.



# Image 1

Sustained Investigation

Height: 12

Width: 9

Depth: 0

Materials: Oil paint

Process(es):

The morning mist of a new home reminds me of the mornings I knew in my true home in West Virginia.

Use of Digital Tool(s): No



## Image 2

Sustained Investigation

Height: 10

Width: 8

Depth: 0

Materials: Acrylic paint, oil paint

Process(es):

Revisiting the misty mountains of WV makes me reminisce about once being so familiar with the roads

Use of Digital Tool(s): No



## Image 3

Sustained Investigation

Height: 20

Width: 16

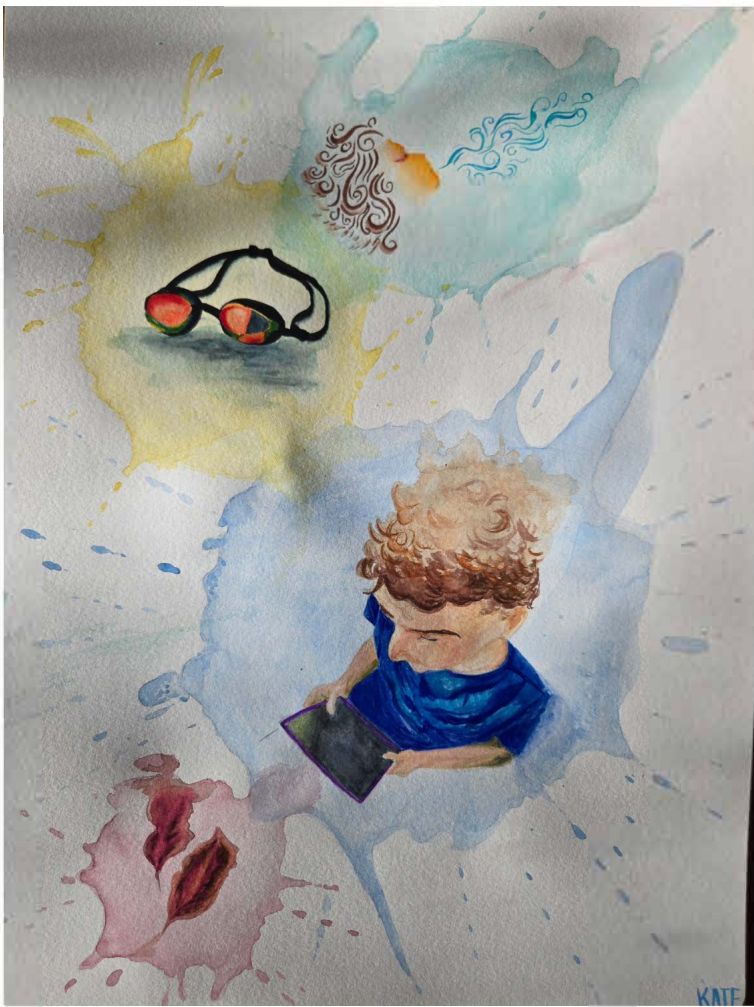
Materials: Oil paint

Process(es):

My backyard in WV. Going back when it was raining reminded me of days spent seeing it like that.

Use of Digital Tool(s): No





## Image 4

Sustained Investigation

Height: 20.1

Width: 14.8

Materials: Water color

Process(es):

Conveying the feeling felt after swim practice. My brothers and I would play video games afterwards.

Use of Digital Tool(s): No



## Image 5

Sustained Investigation

Height: 12

Width: 9

Materials: Oil paint

Process(es):

I grew up skiing. Even though it might not be the same, skiing in IA makes me nostalgic

Use of Digital Tool(s): No



## Image 6

Sustained Investigation

Height: 10

Width: 10

Materials: Oil paint

Process(es):

A memory of a moment in childhood.

Use of Digital Tool(s): No





## Image 7

Sustained Investigation

Height: 16

Width: 20

Materials: Acrylic paint, oil paint

Process(es):

The farm belonging to my family in WV.

Use of Digital Tool(s): No



## Image 8

Sustained Investigation

Height: 12

Width: 9

Depth: 0

Materials: Ballpoint pen

Process(es):

Reflection on my person as a whole and the growth I've experienced. Nostalgic for that journey.

Use of Digital Tool(s): No



## Image 9

Sustained Investigation

Height: 16

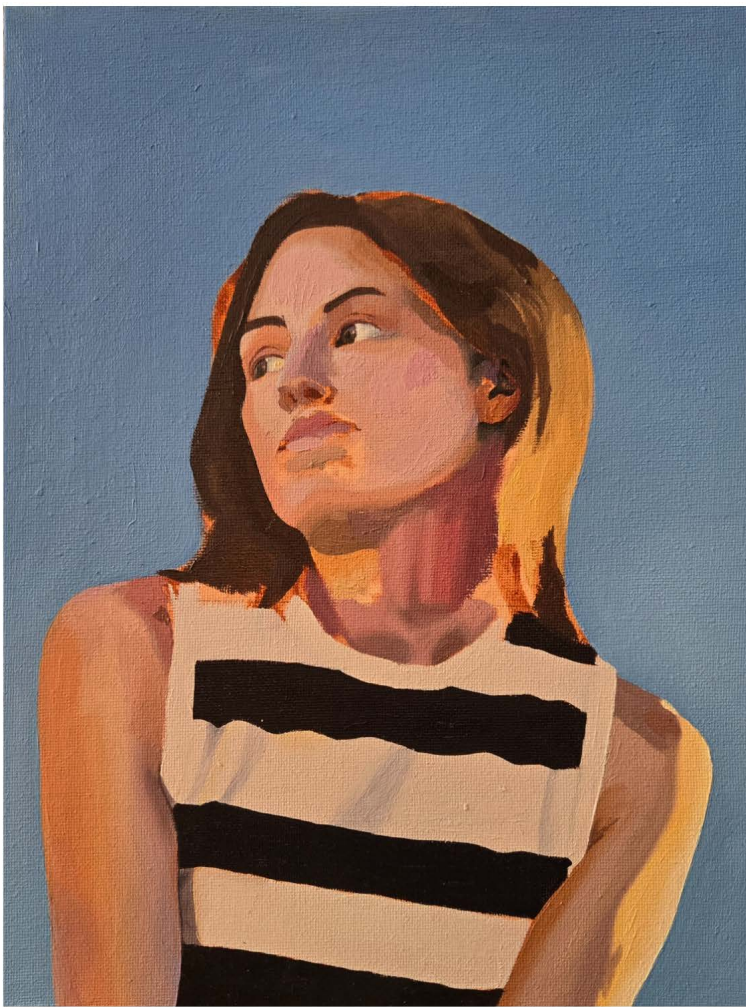
Width: 20

Materials: Acrylic paint, oil paint

Process(es):

I learned how to surf when I was young, going back now makes me grateful for the skills I learned

Use of Digital Tool(s): No



## Image 10

Sustained Investigation

Height: 12

Width: 9

Materials: Oil paint

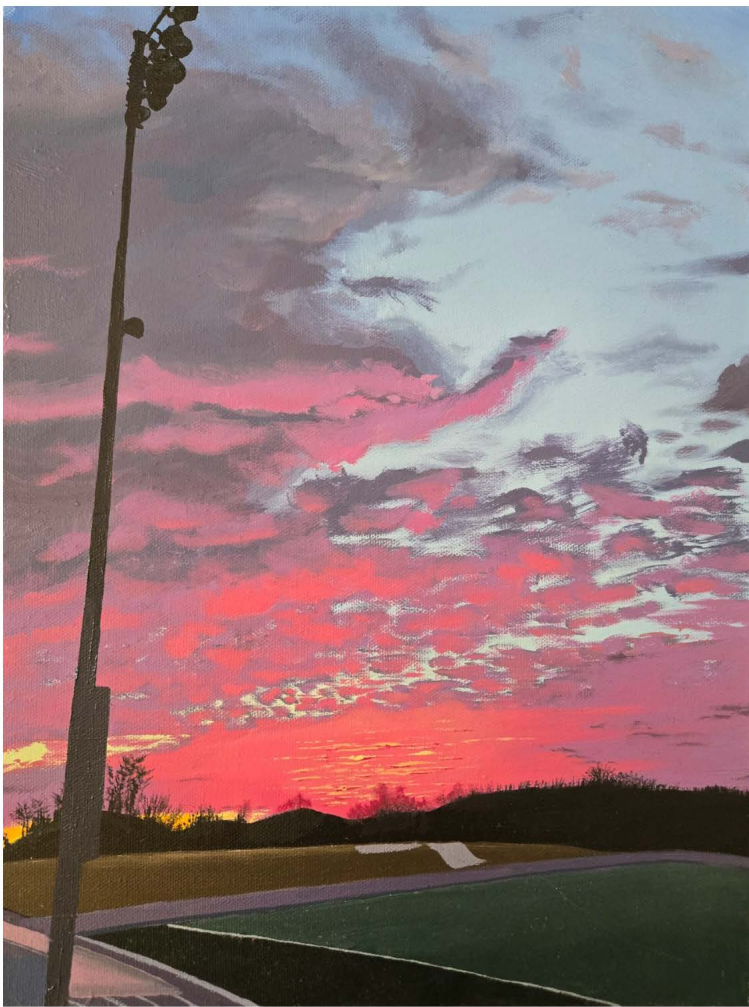
Process(es):

Reflection is a major aspect of nostalgia.

I'm reflecting on my life and time spent  
in high school.

Use of Digital Tool(s): No





## Image 11

Sustained Investigation

Height: 16

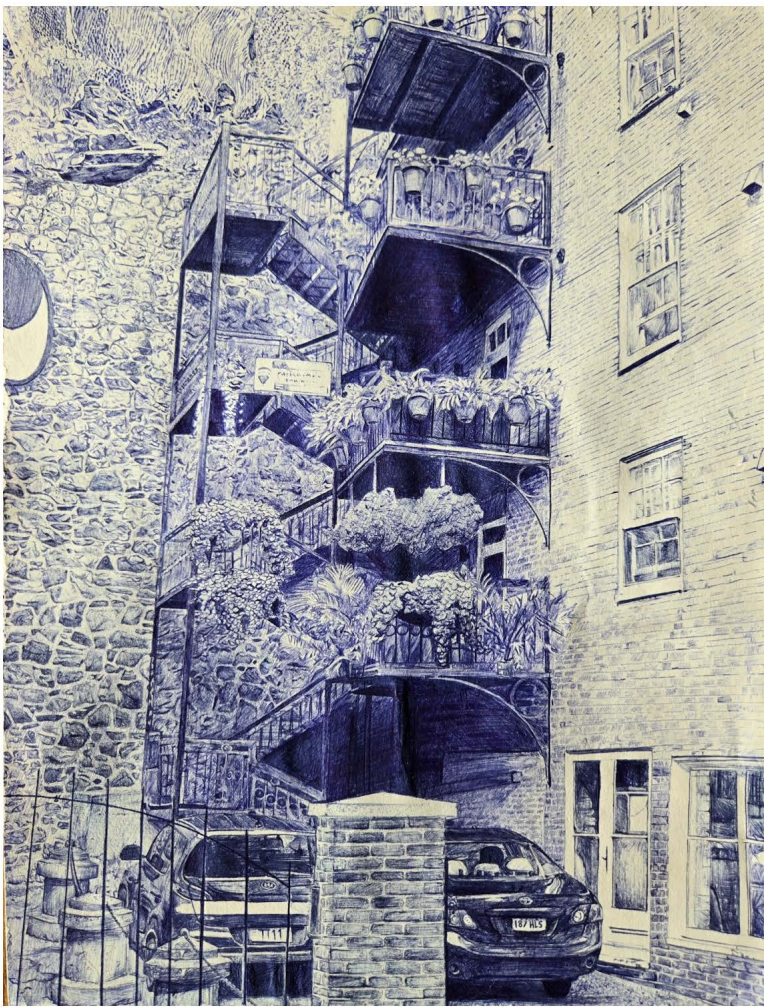
Width: 12

Materials: Oil paint

Process(es):

Band has been a large part of my life during high school. Beautiful sky above field = good memories

Use of Digital Tool(s): No



## Image 12

Sustained Investigation

Height: 12

Width: 9

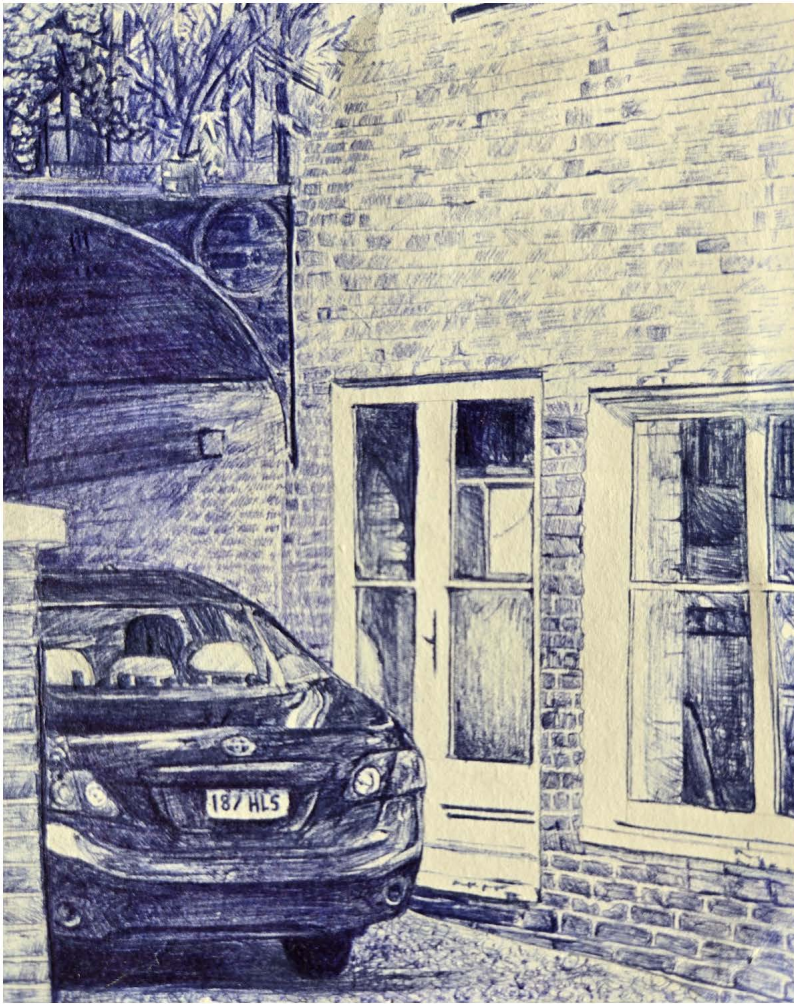
Materials: Ballpoint pen

Process(es):

My grandmother kept plants. She would've loved to be there with me to see others' love of plants

Use of Digital Tool(s): No





## Image 13

Sustained Investigation

Height: 0

Width: 0

Materials: Ballpoint pen

Process(es): Detail shot

Use of Digital Tool(s): No



## Image 14

Sustained Investigation

Height: 0

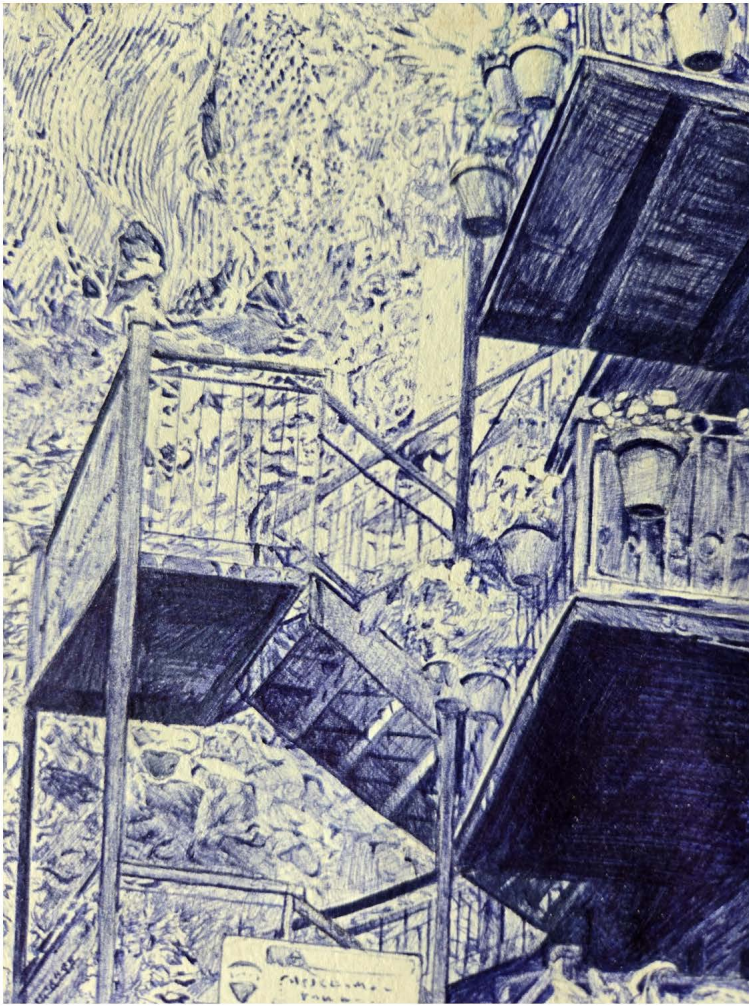
Width: 0

Materials: Oil paint

Process(es): Detail shot

Use of Digital Tool(s): No





## Image 15

Sustained Investigation

Height: 0

Width: 0

Materials: Ballpoint pen

Process(es): Detail shot

Use of Digital Tool(s): No

Analytic Scoring Rubric Row C: Materials, Processes, and Ideas		
1	2	3
<b>Little to no</b> evidence of <b>visual relationships</b> among materials, processes, <b>OR</b> ideas.	<b>Visual relationships</b> among materials, processes, and ideas are <b>evident</b> .	<b>Visual relationships</b> among materials, processes, <b>AND</b> ideas are <b>evident</b> and <b>demonstrate synthesis</b> .

### Score Rationale

This sustained investigation explores nostalgia, centered around "times and places that are reminiscent of a past I was once familiar with, but now do not have access to." Clarity of the idea in the imagery is evident, but inconsistent, and the relationships among materials, processes, and ideas do not fully demonstrate synthesis, earning a score of 2 for Row C.

Several images contain unresolved or underdeveloped areas that make the spaces visually unclear, limiting the viewer's ability to access the idea of nostalgia. Images 1 and 6 include large unpainted sections, which disrupt the illusion of space and leave key elements ambiguous. In Image 3, the simplification of tree and bush forms in the foreground flattens the space and weakens the attempt to depict "my backyard in WV." Similarly, Image 9 shows a surfing scene, but the roughly painted water and sky textures make it harder to understand the emotional tone or setting of the memory being represented.

Figures in Images 5 and 8 are more effective in expressing a personal connection to past experiences. Both use compositional isolation to place the figure as a focal point within a reflective moment. Image 10, on the other hand, is less successful. With only a solid blue background, it reads more as a studio portrait than an intentional exploration of place or memory.

Images 2, 5, 7, 11, and 12 more clearly show how materials, processes, and ideas work together. These images depict specific, often detailed environments that reinforce the theme of meaningful places that are now inaccessible. Image 2 uses soft transitions and atmospheric perspective to create a sense of emotional distance in the misty mountains of West Virginia. Image 7 presents a family-owned tractor in a farmland setting, connecting personal and regional memory through composition and detail.

Images 11 and 12 are the most effective in evoking nostalgia and place. In both, the viewpoint is at eye level, inviting the viewer to walk into the space. Image 11 uses warm hues in the sky contrasted with cool tones in the grass and shadows to create a vivid, emotionally resonant setting. The written evidence connects this to a memory of band practice, reinforcing the use of color to express "good memories." In Image 12, careful mark making is used to depict layered plant life in a courtyard. The space is absent of people, but the intense detail shows that it holds deep emotional value. The accompanying written evidence adds another layer, connecting the plants to the artist's grandmother and the sentiment that "she would've loved to be there with me."

**Summary:** While some images successfully integrate materials, processes, and ideas to express nostalgia, the portfolio as a whole is inconsistent in demonstrating those connections. For this reason, the sustained investigation earns a score of 2 for Row C.



Image 3

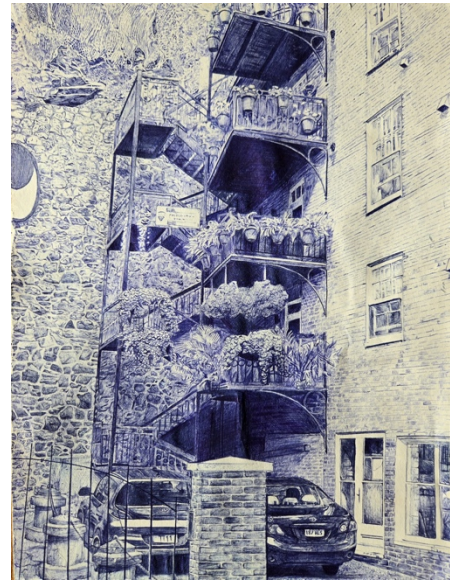


Image 12

Sustained Investigation Score: Row A: Score: 2 • Score: Row B: 1 • **Row C: Score: 2** • Row D: Score: 3