



# **2025 AP<sup>®</sup> Drawing Art and Design**

**Sustained Investigation**

**Analytic Scoring Rubric and Score Rationale**

**Row C—Score 1**

# Written Evidence

## Sustained Investigation

Identify the inquiry that guided your sustained investigation.

Response:

My sustained investigation is "How does my culture (Colombia) affect the identity of women ?".

Describe ways your sustained investigation developed through practice, experimentation, and revision.

Response:

This topic is important because I wanted to learn how my Colombian culture shapes my identity as a woman. In works #1, 3, 10, 13, and 15, I explored themes like family, religion, beauty, tradition, and nature. I practiced digital art in #8, 10, and 15 to improve style and emphasis. I experimented with new techniques in #1,3, and 13 like stippling, embroidery, and beading to make them stand out more. I revised #7 by improving it in #8 using better proportions and digital tools. Using paint, watercolor, embroidery thread, and digital tools, I showed how culture gives meaning to women's identity.



# Image 1

Sustained Investigation

Height: 8

Width: 8

Depth: 0.5

Materials:

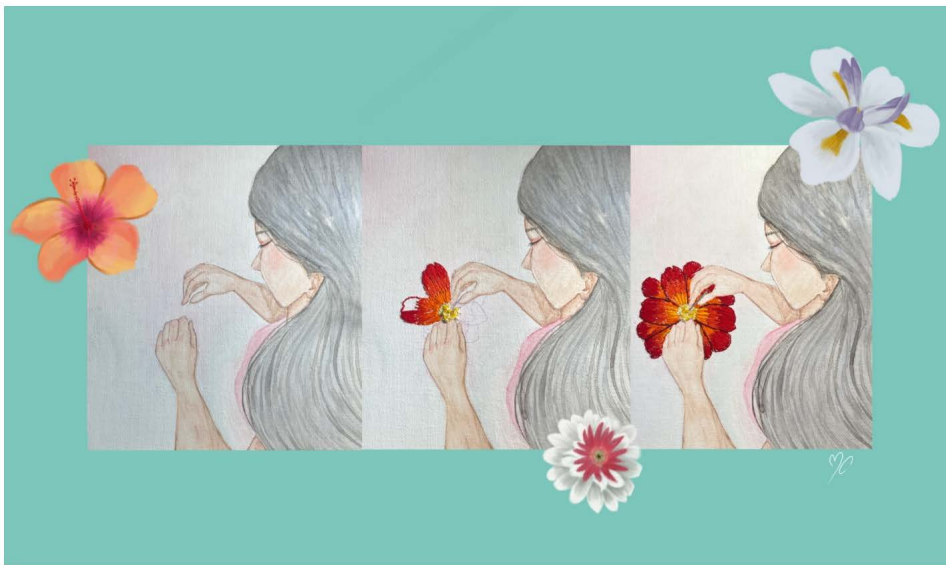
Watercolor paint, acrylic paint and Six stranded embroidery floss.

Process(es):

Used wet into wet for background, wet on dry for portrait and sewed embroidery thread for flower.

Use of Digital Tool(s): No

Citation(s): My personal photograph.



## Image 2

Sustained Investigation

Height: 8.68

Width: 15.5

Materials: Procreate app

Process(es):

I selected 3 photographs of my work process and arranged them and draw 3 types of flowers.

Use of Digital Tool(s): Yes

Digital Tool(s) used: Procreate.



## Image 3

### Sustained Investigation

Height: 30.4

Width: 22.8

#### Materials:

Mix media paper, black and white gel pens.

#### Process(es):

I first sketch my drawing then I fill it out by using the stippling method.

#### Use of Digital Tool(s): No

#### Citation(s):

Virgen de guadalupe, my personal photograph, antiques patterns.





## Image 4

Sustained Investigation

Height: 15.4

Width: 11.6

Materials: Procreate

Process(es):

I upload my art work more detail and change the color in procreate.

Use of Digital Tool(s): Yes

Digital Tool(s) used: Procreate

Citation(s): My own personal image



## Image 5

Sustained Investigation

Height: 14.2

Width: 10.4

Materials: Procreate

Process(es):

I upload my art work more detail and change the color in procreate.

Use of Digital Tool(s): Yes

Digital Tool(s) used: Procreate

Citation(s): My own personal image





## Image 6

Sustained Investigation

Height: 15

Width: 11

Materials:

Watercolor paper, watercolor paint,  
black and white acrylic paint.

Process(es):

I sketched, then I color it using wet on  
dry watercolor technique and I detailed  
with acrylic.

Use of Digital Tool(s): No

Citation(s):

Reference: <https://tinyurl.com/5yzceh63>





## Image 7

Sustained Investigation

Height: 9

Width: 6

Materials:

Watercolor paper, watercolor paint,  
black gel pen.

Process(es):

I practice painting in watercolor without  
sketching.

Use of Digital Tool(s): No

Citation(s):

Colombian cumbia and Colombian  
traditional cumbia costumes.



## Image 8

Sustained Investigation

Height: 21.3

Width: 16

Depth: 21.3

Materials: Procreate

Process(es):

Sketch, color it and add flower patterns to the dress and hair.

Use of Digital Tool(s): Yes

Digital Tool(s) used: Procreate

Citation(s):

Colombian cumbia and Colombian traditional cumbia costume.



## Image 9

Sustained Investigation

Height: N/A

Width: N/A

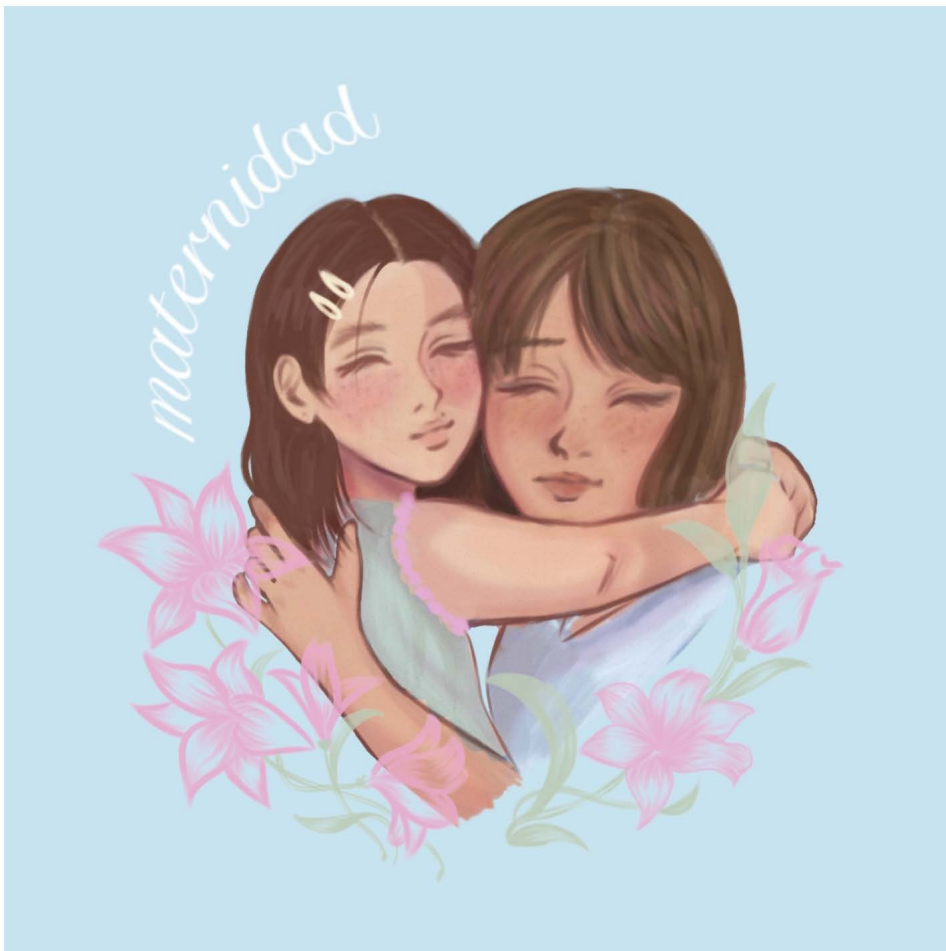
Depth: N/A

Materials: Charcoal pencil

Process(es): Observational drawing

Use of Digital Tool(s): No





## Image 10

Sustained Investigation

Height: 16

Width: 21

Depth: N/A

Materials: Procreate

Process(es):

Sketch out to figures representing my mom and me the rendering, coloring and add effects.

Use of Digital Tool(s): Yes

Digital Tool(s) used: Procreate

Citation(s): My own personal photo



## Image 11

Sustained Investigation

Height: 21

Width: 24.5

Depth: NA

Materials: Acrylic markets

Process(es):

Sketch first with pencil then over line  
with acrylic markets.

Use of Digital Tool(s): No

Citation(s): Colombian tipical hat



## Image 12

Sustained Investigation

Height: NA

Width: NA

Depth: NA

Materials: Acrylic markets.

Process(es): Details collage.

Use of Digital Tool(s): No





## Image 13

Sustained Investigation

Height: 10

Width: 8

Depth: 0.5

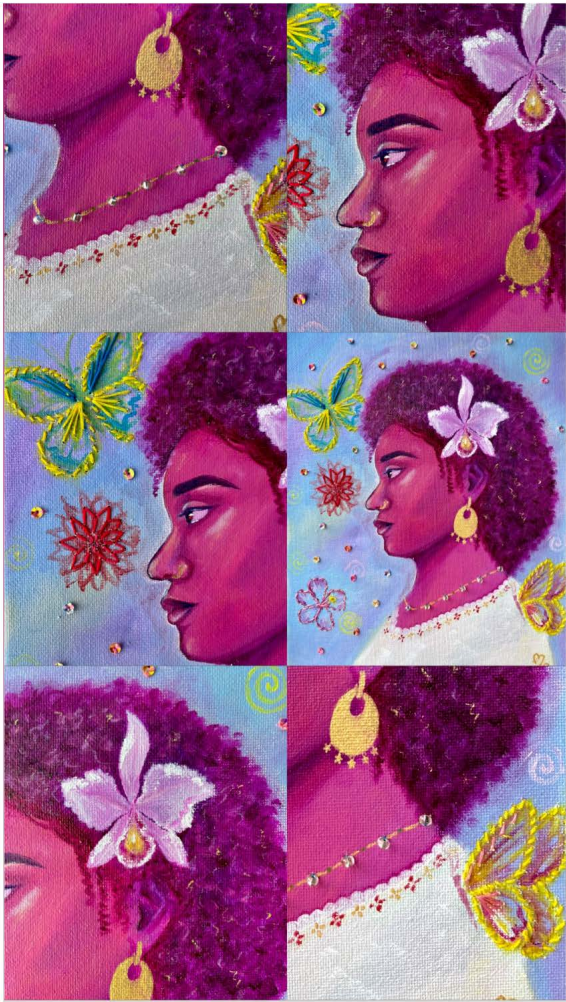
Materials:

Oil paint, golden acrylic paint,  
embroidery thread, beads.

Process(es):

Sketch with oil paint the side profile,  
painted, embroidered details and add  
beads for more details.

Use of Digital Tool(s): No



## Image 14

Sustained Investigation

Height: n/a

Width: N/a

Depth: N/a

Materials:

Oil paint, golden acrylic paint,  
embroidery thread, beads.

Process(es): Details collage.

Use of Digital Tool(s): No



## Image 15

Sustained Investigation

Height: 17

Width: 24

Depth: N/a

Materials: Procreate

Process(es):

Sketch then color the add details with texture brushes.

Use of Digital Tool(s): Yes

Digital Tool(s) used: Procreate

Citation(s):

1997' model Yamada Maiko photoshoot.



Analytic Scoring Rubric Row C: Materials, Processes, and Ideas		
1	2	3
Little to no evidence of <b>visual relationships</b> among materials, processes, and ideas.	<b>Visual relationships</b> among materials, processes, and ideas are <b>evident</b> .	<b>Visual relationships</b> among materials, processes, and ideas are <b>evident</b> and <b>demonstrate synthesis</b> .

### Score Rationale

This sustained investigation explores how Colombian culture influences the identity of women, but the visual relationships among materials, processes, and ideas are not consistently demonstrated across the body of work, resulting in a score of 1 for Row C. While the investigation is visually supported in some images, such as Images 3, 4, 5, 7, 8, 11, and 12, others (Images 1, 2, 6, 9, 10, 13, 14, and 15) show little or no clear connection to the central idea. The use of nontraditional materials like embroidery floss, thread, and beading could support the investigation, but neither the visual evidence nor the written commentary explains how these materials relate to Colombian cultural identity or femininity. As a result, these material choices appear decorative rather than conceptually integrated.

The written evidence primarily describes the steps taken to complete each image but does not explain how processes are informed by or connected to the investigation's ideas. There is little indication that the materials or techniques evolve in relation to the inquiry.

The strongest visual connections appear in Images 3, 8, and 11. These images incorporate culturally relevant symbols and feminine-presenting figures. For example, in Image 8, a figure in a traditional "cumbia costume" incorporates the colors of the Colombian flag, visually supporting the idea that "culture gives meaning to women's identity." However, this level of integration is not evident across the majority of the investigation. In contrast, Image 15 shows a figure with long, flowing hair lying on grass, accompanied by a butterfly and hummingbird, but there is no visual or written explanation of how this scene relates to Colombian culture or identity.

**Summary:** Although some images suggest a relationship among materials, processes, and ideas, the majority do not. The investigation lacks consistent visual integration, supporting a score of 1 for Row C.



Image 8



Image 15

Sustained Investigation Score: Row A: Score: 2 • Row B: Score: 2 • **Row C: Score: 1** • Row D: Score: 2