



# **2025 AP<sup>®</sup> Drawing Art and Design**

**Sustained Investigation**

**Analytic Scoring Rubric and Score Rationale**

**Row B—Score 2**

# Written Evidence

## Sustained Investigation

Identify the inquiry that guided your sustained investigation.

Response:

My inquiry is the expression of affection through different viewpoints and interpretations, which guided my sustained investigation. In my pieces, I hope to go from common forms of displaying affection, such as physical touch, to symbolic, and then to more personal forms of affection I have experienced. I have made it this way because growing up in a conservative Muslim household, southern forms of affection were not shown, rather through actions, words, and gifts. The way that my change is shown is how it transitions from people to objects and from far to close up.

Describe ways your sustained investigation developed through practice, experimentation, and revision.

Response:

SI1-2 explores affection through universally recognized gestures like hugs and kisses. SI3 depicts the bond between a mother and child using color to convey emotion. In SI4 I illustrated a happy, fairytale like portrayal of couples, inspired by romantic ideals seen in movies outside of my Muslim upbringing. SI 5 shifts to affection symbolisms n through symbolism jasmine flowers, I associate with a portrait of my grandmother. SI 6 marks a transition from display and symbolism to emotional effects as seen through children and plants. SI7-9 depict affections expressed through gifts, quality time.



## Image 1

Sustained Investigation

Height: 18

Width: 24

Depth: 0

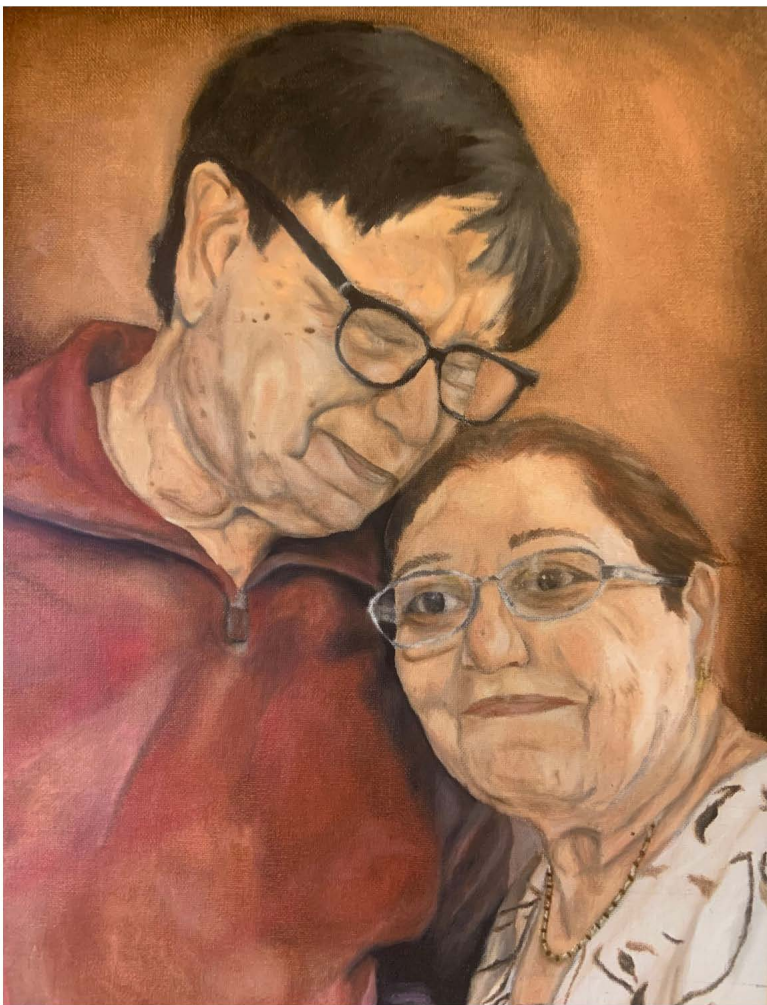
Materials:

Saturated oil pastel colors on paper, blend with tortillon to visually reinforce the love/affection.

Process(es):

High contrast (dark and light) colors to highlight playful energy of affection expressed in texture

Use of Digital Tool(s): No



## Image 2

Sustained Investigation

Height: 20

Width: 16

Depth: 0

Materials:

Oil paint with a brush on canvas to capture detailed expressions that show love between individuals

Process(es):

Warm undertones colors with blending in smooth gradients to capture warmth and emotion intimacy

Use of Digital Tool(s): No

Citation(s):

18th Century Painting "Couple in love"



## Image 3

Sustained Investigation

Height: 14

Width: 17

Depth: 0

Materials:

Graphite on paper with oil pastel in areas of contact to demonstrate importance of physical touch

Process(es):

Layered / blended color oil pastels to show skin-to-skin contact, contrasting the lifeless graphite.

Use of Digital Tool(s): No





## Image 4

### Sustained Investigation

Height: 8

Width: 8

Depth: 3.5

#### Materials:

Watercolor, thin cardboard, paper, rubber bands, straws, X-Acto knife, and hole puncher

#### Process(es):

Paint scenes on papers, use cardboard for depth, hole punch sides, rubberband, straw hold curtains

Use of Digital Tool(s): No



## Image 5

### Sustained Investigation

Height: 20

Width: 16

Depth: 0

#### Materials:

Oil paint w/ brush, glue, and gold foil to unify the person with warm tones and background visually

#### Process(es):

Blended / layered oil paint of warm analogous colors(green/yellow); wait tacky glue to add gold foil

Use of Digital Tool(s): No



## Image 6

Sustained Investigation

Height: 17

Width: 14

Depth: 0

Materials:

Watercolor layered w/ colored pencil and felt to show the result of nurturing children and plants

Process(es):

Light values watercolor w/ colored pencils for details and added felt of vibrant colors for emphasis

Use of Digital Tool(s): No





## Image 7

Sustained Investigation

Height: 12

Width: 9

Depth: 0

Materials:

Vibrant oil paint with a brush on canvas  
to represent friendships and the bonds.

Process(es):

Contrast of a wide range of warm colors  
to add a focal point to the cool blue  
tones of the sweater

Use of Digital Tool(s): No



## Image 8

Sustained Investigation

Height: 17

Width: 14

Depth: 1

Materials:

Marker and colored pencil paper cutouts on pop-up paper add dimension, making the food stand out

Process(es):

Blocked in marker colors, added textured details w/ colored pencil; glued paper strip creates pop-up

Use of Digital Tool(s): No





## Image 9

Sustained Investigation

Height: 17

Width: 14

Depth: 0

Materials:

Oil and chalk pastels on paper to illustrate the simple act of an apology in asian culture.

Process(es):

Focal point on mango by opaque and bright yellow color contrast, textured pencil marks on background

Use of Digital Tool(s): No

## Experimenting with different reference pictures through different angles



Was too close, not clear that it was a kiss.

You couldn't see the kiss and it wasn't me, so it wasn't as personal.



Final picture because you could see the cat and me clearly and it was clear that it was a kiss. I also chose it because I wanted to show affection beyond just humans, but also how animals show affection to humans as well.

## Image 10

Sustained Investigation

Height: NA

Width: NA

Depth: NA

Materials:

Photos from the camera, laptop with Word for editing layouts and documenting thought process

Process(es):

Experiment with different angles and reference photos to illustrate obvious affections

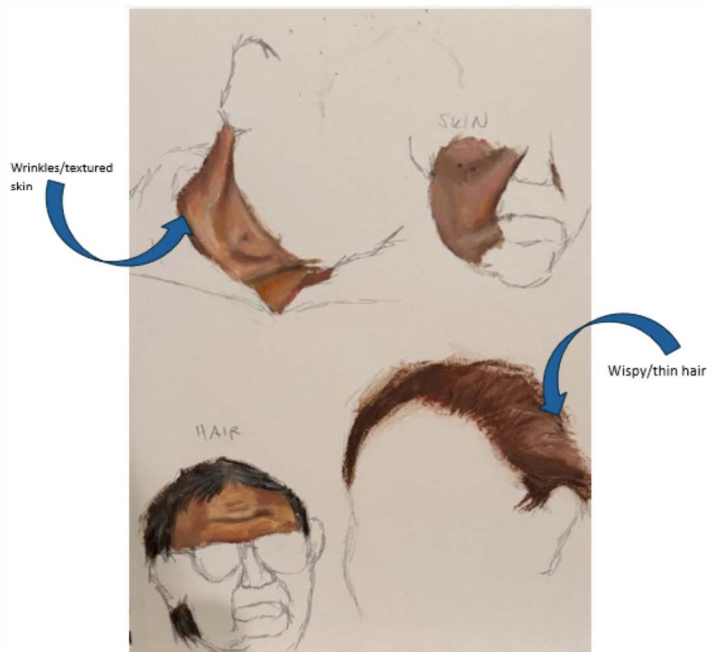
Use of Digital Tool(s): Yes

Digital Tool(s) used:

I used Microsoft Word Document to create the layout of the photo collage and experimentation.



## experimenting with contrasting textures within the piece



The texture in this piece demonstrates the lasting nature of their relationship throughout time.

## Image 11

Sustained Investigation

Height: NA

Width: NA

Depth: NA

Materials:

Oil paint applied with brush in sketchbook; photo from iPhone; Word on Laptop to organize layout

Process(es):

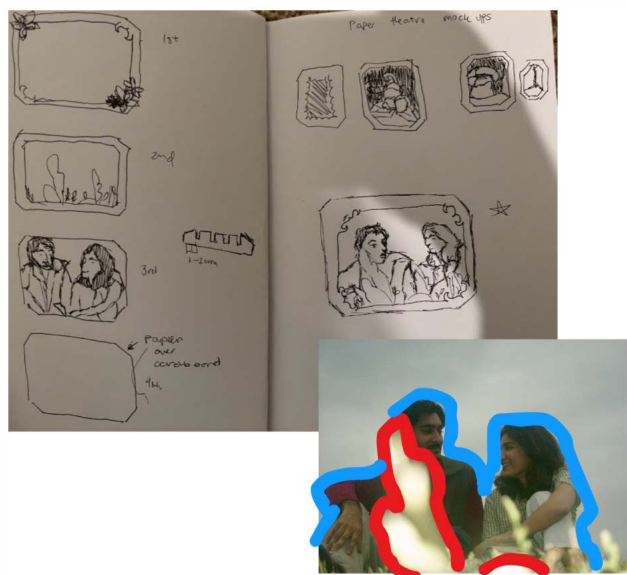
Base layer of colors and blend wide ranges of values to build shadows and highlights

Use of Digital Tool(s): Yes

Digital Tool(s) used:

Microsoft Word Document to organize and explain my oil painting practices

## planning of the layers by breaking the photo into pieces



by breaking the photo into layers, i was able to construct the paper theatre like shown in theatrical designs. I used a reference of a paper theatre on the market to see how it was constructed, then added my own adjustments such as medium.

## Image 12

Sustained Investigation

Height: NA

Width: NA

Depth: NA

Materials:

Reference photo from the camera, a pen w/ the sketchbook, and layout edit on Snapchat App and Canva

Process(es):

Used reference photo to plan tunnel book; sketched each layer to guide composition and depth

Use of Digital Tool(s): Yes

Digital Tool(s) used:

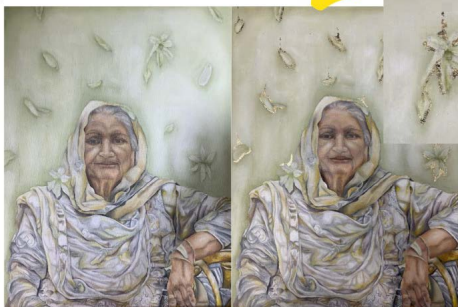
Snapchat App to draw on the reference photo and canva for organizing my picture and explanation.

# artist research by experimenting with Gustav Klimt's gold aspects



Gold foil allowed me to provide greater emphaiss on the flowers which are the symbolic element of the piece since they represent attachment. Without the gold foil the petals blend into the background, however with the gold foil they pop out and are more eyecatching as seen in the extreme use of it in Gustav Klimt's pieces.

without gold foil



with gold foil

## Image 13

Sustained Investigation

Height: NA

Width: NA

Depth: NA

Materials:

Pencil, markers, pen, photo from iPhone, sketchbook, Canva on laptop  
arrange image and explanation

Process(es):

Artist research on Gustav Klimt's The Kiss and his use of gold; planned use of gold on my artwork

Use of Digital Tool(s): Yes

Digital Tool(s) used:

Canva to organize my before and after of the painting and the artist research.

Citation(s): Gustav Klimt's The Kiss

# change in medium within elements



The 3 people in the painting are also watercolor so it all blends into the background



the people are shown in felt so it stands out compared to its previous watercolor display

## Image 14

Sustained Investigation

Height: NA

Width: NA

Depth: NA

Materials:

Watercolor, colored pencils, brush, felt, scissors, and glue on paper, Canva on laptop

Process(es):

Change by gluing bright felt to contrast with the light watercolor and colored pencils style

Use of Digital Tool(s): Yes

Digital Tool(s) used:

Canva used to show before-and-after images demonstrating how felt experimentation enhanced emphasis



## Experimenting with different designs necklaces



## Image 15

Sustained Investigation

Height: NA

Width: NA

Depth: NA

Materials:

Pencil w/ sketchbook and photos from a camera, canva on laptop

Process(es):

Experimented w/ different necklace designs to represents friendship through words or symbolic images

Use of Digital Tool(s): Yes

Digital Tool(s) used:

Canva to organize text and image

## Analytic Scoring Rubric Row B: Practice, Experimentation, and Revision

**Writing Prompt 2:** *Describe ways your sustained investigation developed practice, experimentation, and revision.*

1	2	3
Visual evidence of practice, experimentation, and revision <b>does not relate</b> to a sustained investigation.	Visual and written evidence of practice, experimentation, and revision <b>relates</b> to a sustained investigation.	Visual evidence of practice, experimentation, and revision <b>demonstrates development</b> of the sustained investigation. <b>AND</b> Written evidence <b>describes ways</b> the sustained investigation <b>developed</b> through practice, experimentation, and revision.

### Score Rationale

This sustained investigation earned a score of 2 for Row B because the visual and written evidence of practice, experimentation, and revision relates to the inquiry but is inconsistently demonstrated. The investigation, which explores “the expression of affection through different viewpoints and interpretations” using imagery such as “universally recognized gestures like hugs and kisses,” is visually supported in Images 1, 2, 3, and 7. However, this connection becomes less clear in Images 4, 5, 6, and 8, where the imagery or symbolism is ambiguous and underdeveloped.

Practice is evident through the use of a variety of materials—oil pastel, oil paint, watercolor, marker, colored pencils, chalk pastels, and gold foil—and thoughtful color application. For example, in Image 2, the written evidence explains the use of “warm undertone colors” to “capture warmth and emotional intimacy,” linking material choices to the investigation. In contrast, Image 6, which references “emotional effects as seen through children and plants,” lacks clarity in how the imagery contributes to the investigation’s focus on affection.

Images 7, 8, and 9 shift the inquiry to affection expressed through gifts and quality time. Image 7 is supported by written evidence describing a necklace as a symbol of “friendship and the bonds.” However, the written evidence for Image 8 does not clearly explain how the composition develops the concept of gifts or time as expressions of affection.

Experimentation is evident in Images 10 through 15, though its purpose and connection to the investigation vary. Image 13 includes changes in material (gold foil), and while the process is well-documented, the development of meaning remains vague. The artist states the foil emphasizes the flower as a symbol of attachment, yet this revision appears focused on visual contrast rather than deepening the conceptual link to affection.

Image 10 provides the strongest written evidence of experimentation and revision contributing to the development of the investigation. The student describes altering the composition, subject, and reference photo, ultimately choosing a more personal image that better expresses the emotional bond between subject and pet. The decision to revise based on personal connection clearly demonstrates how experimentation can clarify intent.

**Summary:** While there is visual and written evidence of practice, experimentation, and revision, the development of the sustained investigation is inconsistently supported. This justifies a score of 2 for Row B.

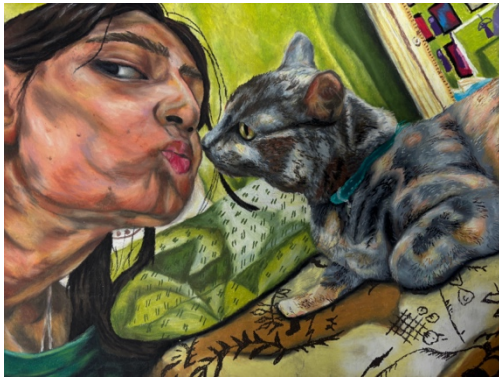


Image 1

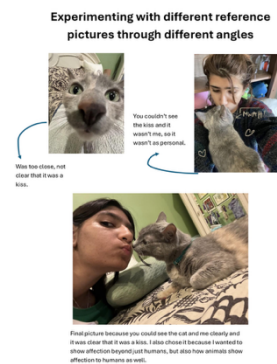


Image 10

Sustained Investigation Score: Row A: Score: 2 • **Row B: Score: 2** • Row C: Score: 2 • Row D: Score: 2