



# **2025 AP<sup>®</sup> Drawing Art and Design**

**Sustained Investigation**

**Analytic Scoring Rubric and Score Rationale**

**Row B—Score 1**

# Written Evidence

## Sustained Investigation

Identify the inquiry that guided your sustained investigation.

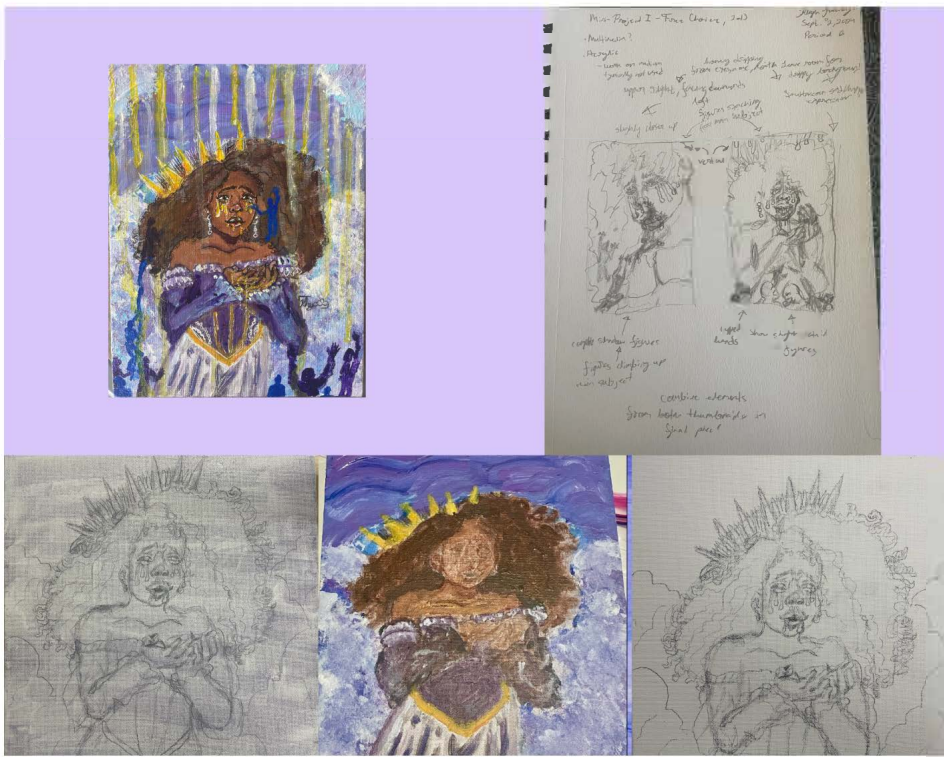
Response:

How can I explore the juxtaposition of the light, whimsical nature of watercolor versus the profound and debilitating essence of mental health/human emotions? Months prior to starting the portfolio, I had this unrelenting idea to create a series of pieces depicting the range of sentiments. I came up with titles for each piece, took note of them, and then returned at a later point to picture how to best express each feeling from my perspective. Once I rewrote my theme in question format, I found that a direct way of making my SI more vulnerable was challenging myself to illustrate my own pain.

Describe ways your sustained investigation developed through practice, experimentation, and revision.

Response:

Throughout the process of answering my guiding inquiry, I began to recognize a subtopic that was materializing with each new piece: struggle. I had desired to emphasize the inner-conflict a person who was living through those same difficulties may be dealing with. My passion became illuminating the unseen fights that those of us with mental health issues face daily in ways I couldn't sufficiently explain with words. Learning to clearly express such complex concepts with symbolism was challenging and yet relieving. My SI began with a more general outlook that gradually became more personal.



# Image 1

## Sustained Investigation

Height: 11

Width: 9

Depth: 0

### Materials:

H Graphite Drawing Pencil, Acrylic Paint and Markers, Cotton Pads, Lining Pens, and White Gel Pen

### Process(es):

Thumbnails, sketch, line art, acrylic paint, highlights

Use of Digital Tool(s): No



## Image 2

Sustained Investigation

Height: 11

Width: 9

Depth: 0

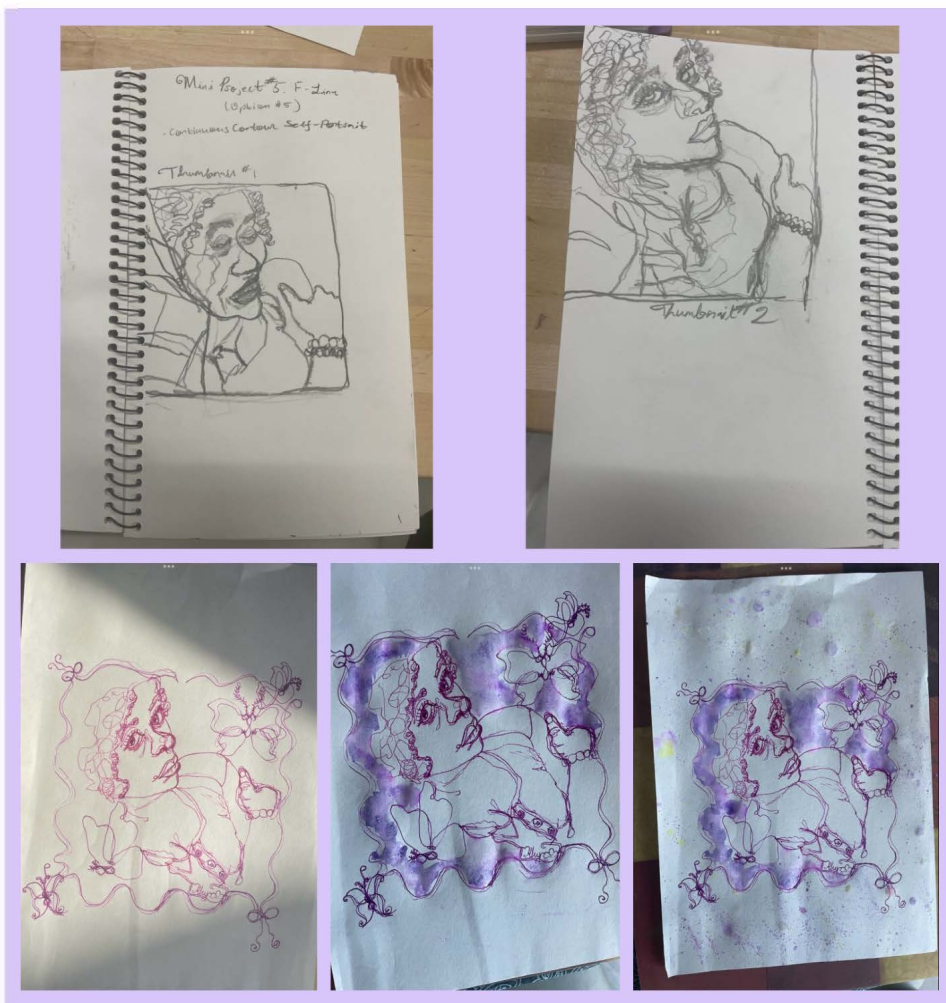
Materials:

H Graphite Drawing Pencil, Acrylic Paint and Markers, Cotton Pads, Lining Pens, and White Gel Pen

Process(es):

Thumbnails, sketch, line art, acrylic paint, highlights

Use of Digital Tool(s): No



## Image 3

Sustained Investigation

Height: 10

Width: 7

Depth: 0

Materials:

Ballpoint Pen and Water Colors

Process(es):

Thumbnails, Outline, Watercolor Paint

Use of Digital Tool(s): No





## Image 4

Sustained Investigation

Height: 10

Width: 7

Depth: 0

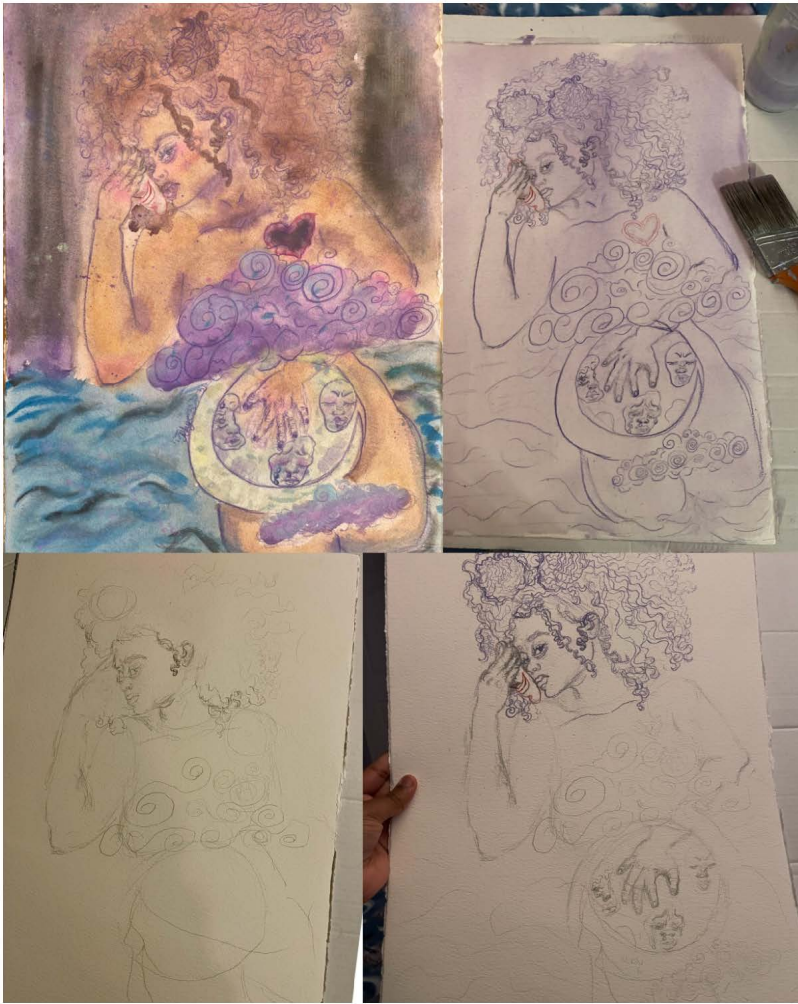
Materials:

Ballpoint Pen and Water Colors

Process(es):

Thumbnails, Outline, Watercolor Paint

Use of Digital Tool(s): No



## Image 5

Sustained Investigation

Height: 24

Width: 16

Depth: 0

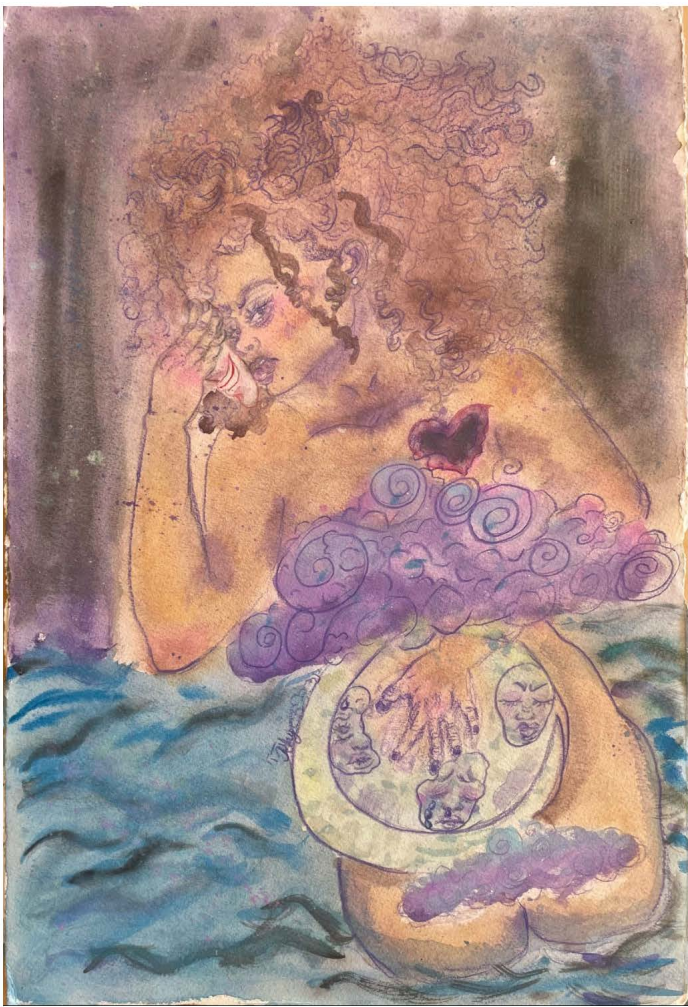
Materials:

H Graphite Drawing Pencil, Colored Pencils, Water Colors, and White Gel Pen

Process(es):

Thumbnails, sketch, line art, watercolor paint, highlights

Use of Digital Tool(s): No



## Image 6

Sustained Investigation

Height: 24

Width: 16

Depth: 0

Materials:

H Graphite Drawing Pencil, Colored Pencils, Water Colors, and White Gel Pen

Process(es):

Thumbnails, sketch, line art, watercolors, highlights

Use of Digital Tool(s): No





## Image 7

Sustained Investigation

Height: 12

Width: 11

Depth: 0

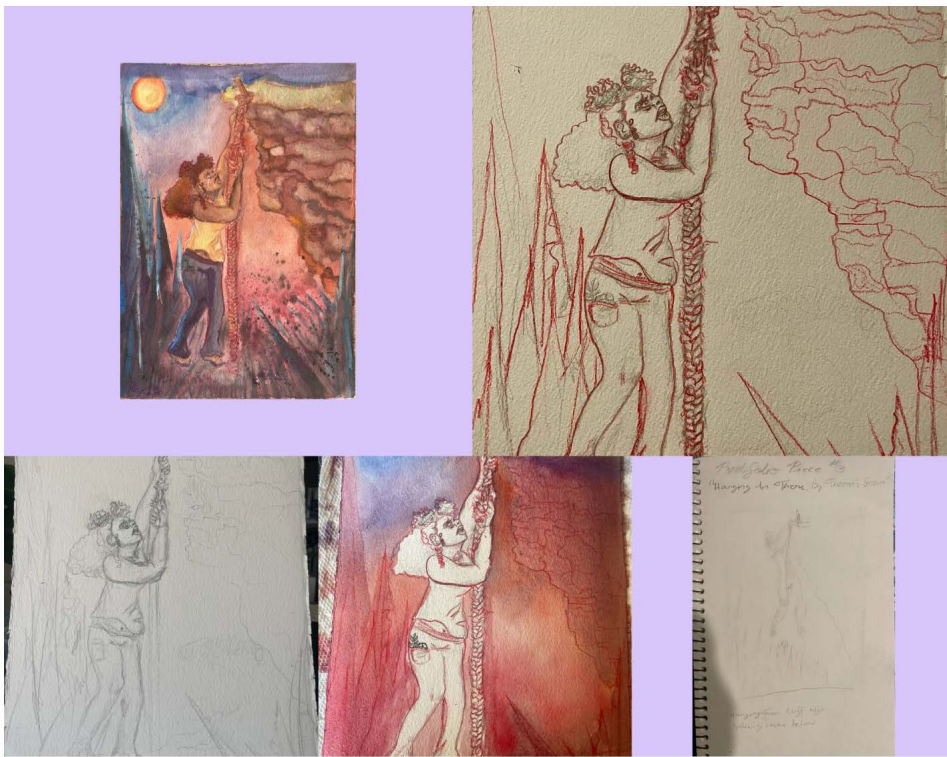
Materials:

2H Graphite Drawing Pencil, PIGMA  
MICRON Pens, Water Colors, and White  
Gel Pen

Process(es):

Thumbnails, sketch, line art,  
watercolors, highlights

Use of Digital Tool(s): No



## Image 8

Sustained Investigation

Height: 15

Width: 11

Depth: 0

Materials:

2H Graphite Drawing Pencil, Colored Pencil, Water Colors, and White Gel Pen

Process(es):

Thumbnails, sketch, line art, watercolors, highlights

Use of Digital Tool(s): No



## Image 9

Sustained Investigation

Height: 15

Width: 11

Depth: 0

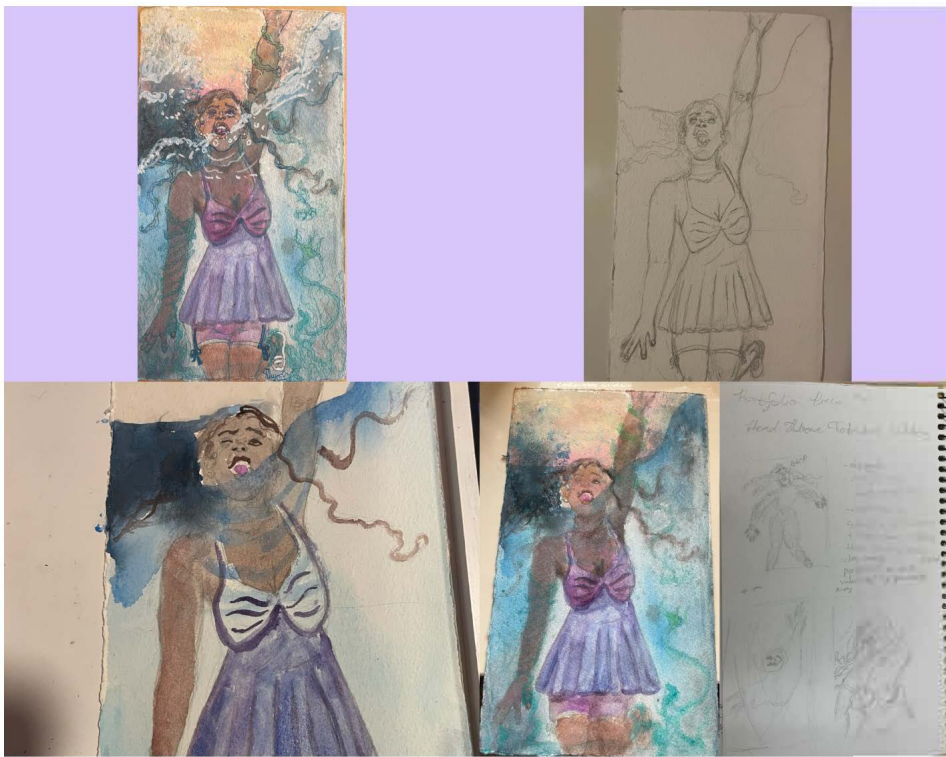
Materials:

2H Graphite Drawing Pencil, Colored  
Pencil, Water Colors, and White Gel Pen

Process(es):

Thumbnails, sketch, line art,  
watercolors, highlights

Use of Digital Tool(s): No



## Image 10

Sustained Investigation

Height: 12

Width: 7

Depth: 0

Materials:

2H Graphite Drawing Pencil, Water  
Colors, Colored Gel Pens and White Gel  
Pen

Process(es):

Thumbnails, sketch, line art,  
watercolors, highlights

Use of Digital Tool(s): No





## Image 11

Sustained Investigation

Height: 15

Width: 11

Depth: 0

Materials:

2H Graphite Drawing Pencil, Water Colors, Colored Pen, and White Gel Pen

Process(es):

Thumbnails, sketch, line art, watercolor, highlights

Use of Digital Tool(s): No



## Image 12

Sustained Investigation

Height: 11

Width: 7

Depth: 0

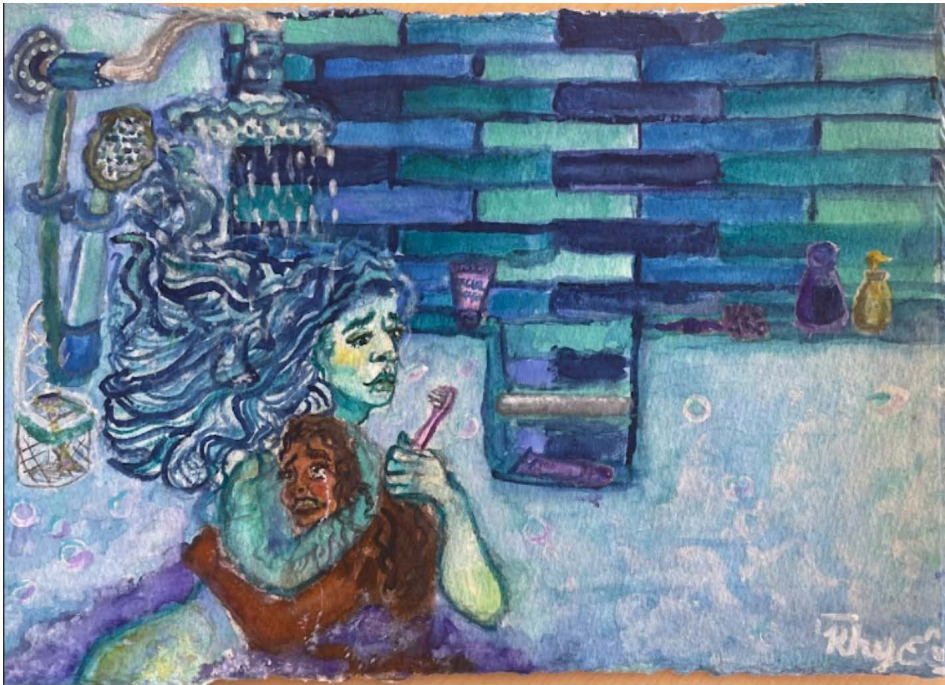
Materials:

Graphite Drawing Pencil, Water Colors,  
and White Gel Pen

Process(es):

Thumbnails, sketch, watercolor paint,  
highlights

Use of Digital Tool(s): No



## Image 13

Sustained Investigation

Height: 11

Width: 7

Depth: 0

Materials:

Graphite Drawing Pencil, Water Colors,  
and White Gel Pen

Process(es):

Thumbnails, sketch, watercolor paint,  
highlights

Use of Digital Tool(s): No



# Image 14

## Sustained Investigation

Height: 15

Width: 11

Depth: 0

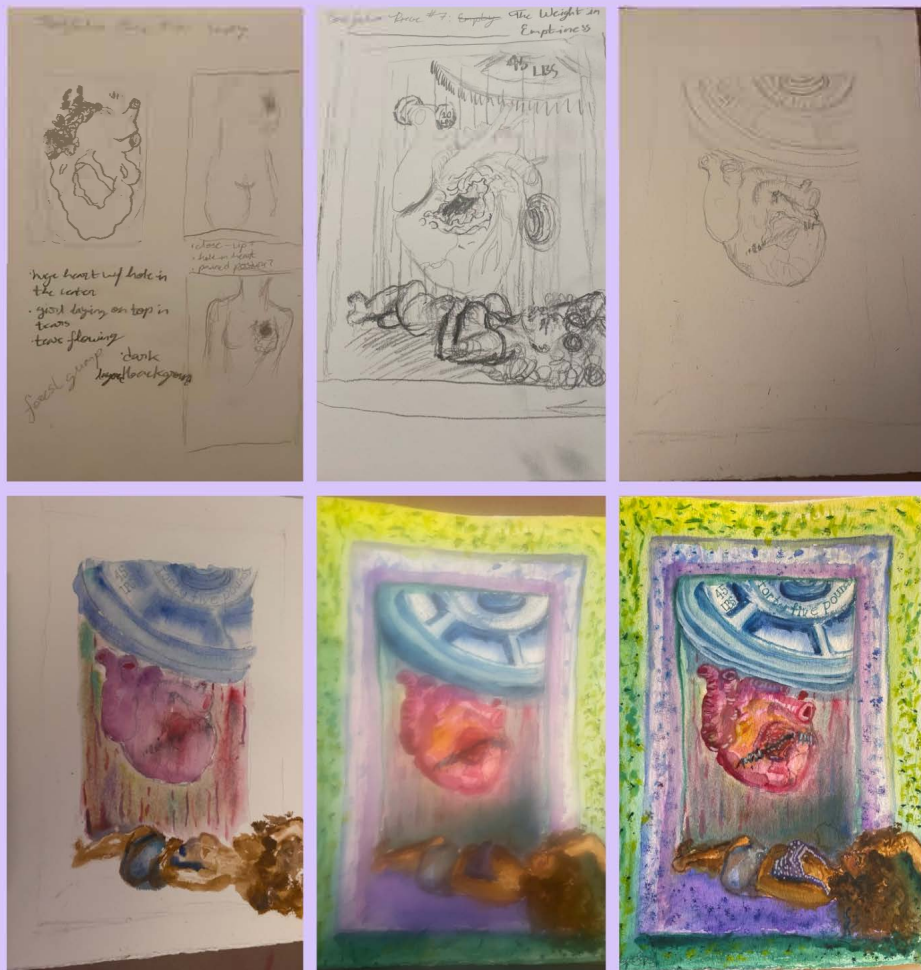
### Materials:

H and B Graphite Drawing Pencils,  
Water Colors, and White Gel Pen

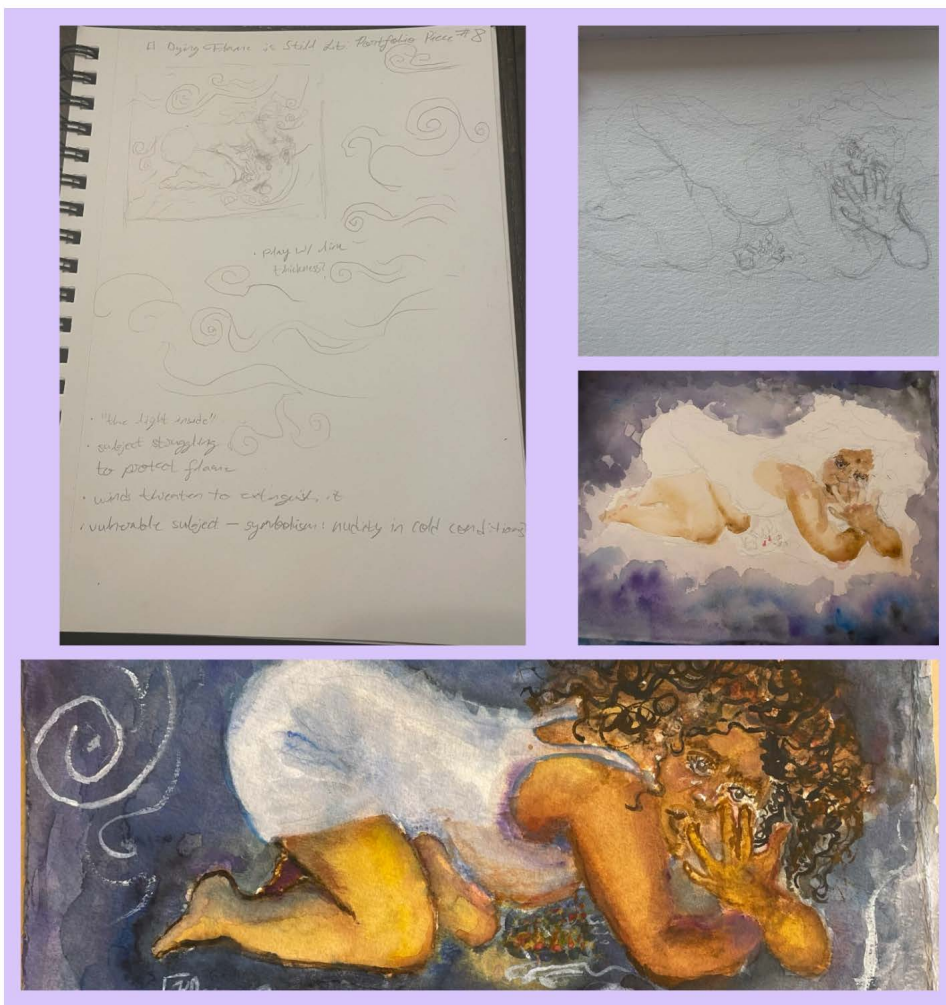
### Process(es):

Thumbnails, sketch, watercolor paint,  
highlights

Use of Digital Tool(s): No







## Image 15

Sustained Investigation

Height: 15

Width: 11

Depth: 0

Materials:

H and B Graphite Drawing Pencils,  
Water Colors, and White Gel Pen

Process(es):

Thumbnails, sketch, watercolor paint,  
highlights

Use of Digital Tool(s): No

## Analytic Scoring Rubric Row B: Practice, Experimentation, and Revision

**Writing Prompt 2:** *Describe ways your sustained investigation developed practice, experimentation, and revision.*

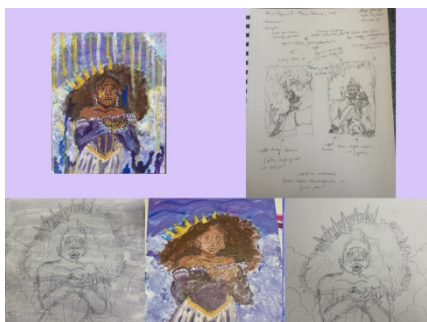
1	2	3
Visual evidence of practice, experimentation, and revision <b>does not relate</b> to a sustained investigation.	Visual and written evidence of practice, experimentation, and revision <b>relates</b> to a sustained investigation.	Visual evidence of practice, experimentation, and revision <b>demonstrates development</b> of the sustained investigation.  <b>AND</b> Written evidence <b>describes ways</b> the sustained investigation <b>developed</b> through practice, experimentation, and revision.

### Score Rationale

This sustained investigation explores the idea of “my own pain,” further described in the writing as “struggle,” “inner conflict,” and “mental health issues.” While there is visual evidence of practice, experimentation, and revision across the body of work, the connection between those actions and the development of the investigation is insufficiently established, resulting in a score of 1 for Row B. The use of watercolor in Images 3 through 15 demonstrates a wide range of practice in that medium, and the application of white gel pen in multiple works—such as Images 1, 2, 8–15—shows experimentation with mark-making and contrast following the initial painting process.

Although a consistent purple and blue palette helps convey a somber emotional tone and could relate to the investigation’s focus on pain, the written evidence does not make this connection explicit. The goals of the investigation are generally stated, but the writing lacks detail about how specific images evolved through revision or experimentation. For instance, Image 1 appears to contain draft compositions that inform Image 2, yet the commentary does not explain what was altered or how those changes contributed to the development of the idea. Similarly, while Images 1, 3, 7, 10, and 14 suggest visual adjustments or iterations, the absence of written explanation prevents those revisions from clearly supporting the inquiry.

**Summary:** Although there is visual evidence of practice and experimentation, the written evidence does not describe how the sustained investigation developed through these processes, resulting in a score of 1 for Row B.



**Image 1**



**Image 2**

Sustained Investigation Score: Row A: Score: 2 • **Row B: Score: 1** • Row C: Score: 2 • Row D: Score: 2