



# **2025 AP<sup>®</sup> Drawing Art and Design**

**Sustained Investigation**

**Analytic Scoring Rubric and Score Rationale**

**Row A—Score 3**

# Written Evidence

## Sustained Investigation

Identify the inquiry that guided your sustained investigation.

Response:

I have always been fascinated by the significance of food in our lives. Living with sensory processing issues, I am acutely aware of how our senses can shape how we view the world around us, for better or worse. This led me to explore how color can be used to influence appetite, or how juxtaposition can depict contrasting attitudes towards food. I also wanted to explore the nuances of how we consume food, in both an individual and capitalistic sense, through portraiture.

Describe ways your sustained investigation developed through practice, experimentation, and revision.

Response:

I frequently tried new mediums to benefit my work. To have better control over color mixing, I began practicing gouache paint, using it for the first time in my 8th sustained investigation, where I used it to make a muted, blue toned piece. I practiced gouache repeatedly, using it again in my 12th and combining it with other mediums in my 15th. I also tried expanding how I used mediums I was already well versed in by adding collage elements to my drawings. I also regularly revised my compositions, like in my 3rd, where I made multiple composition sketches for the same concept.



# Image 1

Sustained Investigation

Height: N/A

Width: N/A

Materials:

Graphite, Ink, paintbrushes, metals pen,  
bamboo pen, micron pens

Process(es):

Sketching based on old family photo

Use of Digital Tool(s): No



## Image 2

Sustained Investigation

Height: 12

Width: 9

Materials:

Ink, paintbrushes, metals pen, bamboo pen, micron pens, white gel pen, white colored pencil

Process(es):

Human disconnectedness from food production, conflict between our civilization and animal nature

Use of Digital Tool(s): No



## Image 3

### Sustained Investigation

Height: N/A

Width: N/A

Materials: Graphite, colored pencils

Process(es):

Trying different compositions; revising sketches

Use of Digital Tool(s): No



## Image 4

Sustained Investigation

Height: 9

Width: 12

Materials: colored pencils, white gel pen

Process(es):

Corruption of the food industry  
contrasted with the innocence of  
childhood food experiences

Use of Digital Tool(s): No

Citation(s):

cows, barn, clouds reference images  
found on google

## Image 5

Sustained Investigation

Height: N/A

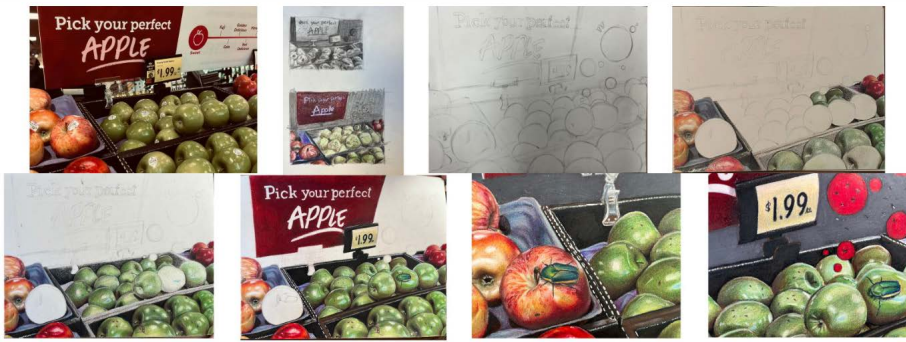
Width: N/A

Materials: Graphite, Colored pencil

Process(es):

experimenting with color schemes in  
sketches, rendering images

Use of Digital Tool(s): No







## Image 6

Sustained Investigation

Height: 9

Width: 12

Materials: colored pencil, white gel pen

Process(es):

Contrasting the differences between the marketing of food and its actual condition

Use of Digital Tool(s): No

Citation(s): bug images from Google





## Image 7

### Sustained Investigation

Height: N/A

Width: N/A

Materials:

Graphite, colored pencil, gouache

Process(es):

sketching different ideas, trying under painting and playing with color schemes, practicing gouache

Use of Digital Tool(s): No



## Image 8

Sustained Investigation

Height: 24

Width: 36

Depth: 18

Materials:

gouache, colored pencil, white gel pen

Process(es):

Lack of appetite when looking within the fridge, emphasized by the muted cool color palette.

Use of Digital Tool(s): No

## Image 9

### Sustained Investigation

Height: N/A

Width: N/A

#### Materials:

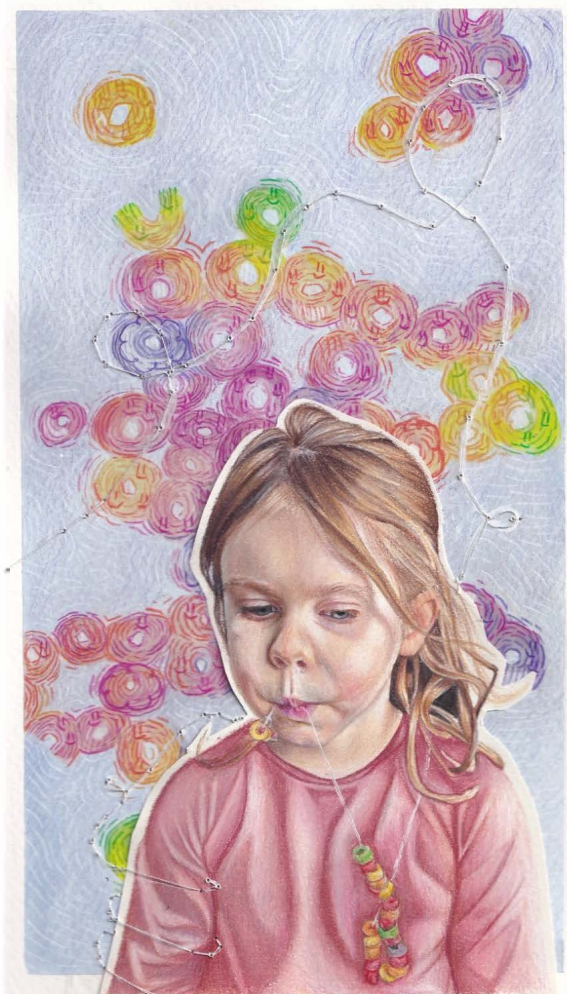
graphite, colored pencils, gouache

#### Process(es):

planning ideas; playing with different textures and color using pencil and paint

Use of Digital Tool(s): No





## Image 10

Sustained Investigation

Height: 10.5

Width: 6

Materials:

Colored pencils, gouache, white gel pen,  
thread

Process(es):

Feelings of nostalgia inspired by  
childhood memories with food

Use of Digital Tool(s): No



## Image 11

Sustained Investigation

Height: 5

Width: 7.5

Materials: gouache, colored pencils

Process(es):

Feeling of intense, aggressive hunger emphasized by the dark, red-toned color palette and gaze

Use of Digital Tool(s): No





## Image 12

Sustained Investigation

Height: 11

Width: 7

Materials:

colored pencil, white gel pen, candy  
wrappers

Process(es):

Overconsumption of food present in both  
overeating and discarded waste after  
(trash)

Use of Digital Tool(s): No





## Image 13

Sustained Investigation

Height: 6

Width: 5

Materials: printing ink

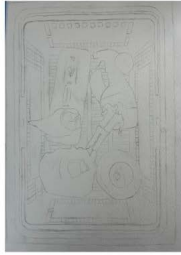
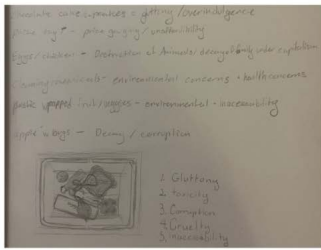
Process(es):

family dinner contrasted with  
slaughterhouse imagery; chain of  
consumption

Use of Digital Tool(s): No

Citation(s):

person, skeleton and slaughterhouse  
reference images from google



## Image 14

Sustained Investigation

Height: N/A

Width: N/A

Materials:

Graphite, Acrylic paint markers, gouache

Process(es):

sketching and planning ideas, playing  
with combining different material

Use of Digital Tool(s): No



## Image 15

Sustained Investigation

Height: 11

Width: 8

Materials:

Acrylic paint markers, gouache, colored pencils, pens

Process(es):

Different vices of the food industry symbolized through objects sitting in a shopping basket

Use of Digital Tool(s): No

Citation(s):

basket and chicken reference images from Google

## Analytic Scoring Rubric Row A: Inquiry

**Writing Prompt 1:** *Identify the inquiry that guided your sustained investigation.*

1	2	3
Written evidence <b>does not identify</b> an inquiry.	Written evidence <b>identifies</b> an inquiry  <b>AND</b> Visual evidence <b>demonstrates</b> the inquiry.	Written evidence <b>identifies</b> an inquiry.  <b>AND</b> Visual evidence <b>demonstrates</b> the inquiry.  <b>AND</b> The inquiry <b>guides</b> the development of the sustained investigation.

### Score Rationale

This sustained investigation identifies the inquiry: “how we consume food, in both an individual and capitalistic sense,” and the written and visual evidence together demonstrate that this inquiry guides the development of the work, earning a score of 3 for Row A. The investigation evolves to include an exploration of how color can influence appetite, as demonstrated in Images 8 and 11. In Image 8, the contents of a refrigerator are painted in muted, cool tones to represent a lack of appetite. The lack of vibrancy in the painted food items supports the idea of unappealing consumption. These painted elements—created on canvas and wood—are placed inside an actual mini fridge, using physical depth and spatial illusion to reinforce the emotional detachment from the food.

Further development of the inquiry is seen in works like Images 4, 6, 12, and 13, which use juxtaposition to depict contrasting relationships with food. For example, in Image 4, the written evidence references “the food industry contrasted with the innocence of childhood food experiences.” This contrast is visually reinforced by the placement of a vibrantly rendered child next to a desolate factory scene featuring emaciated cattle. These works show an intentional and evolving investigation that connects conceptual and visual choices.

**Summary:** The inquiry is clearly stated, visually demonstrated, and consistently guides the development of the sustained investigation, supporting a score of 3.



**Image 4**



**Image 8**

Sustained Investigation Score: **Row A Score: 3** • Row B: Score: 3 • Row C: Score: 3 • Row D: Score: 3