



# **2025 AP<sup>®</sup> Drawing Art and Design**

**Sustained Investigation**

**Analytic Scoring Rubric and Score Rationale**

**Row A—Score 2**

# Written Evidence

## Sustained Investigation

Identify the inquiry that guided your sustained investigation.

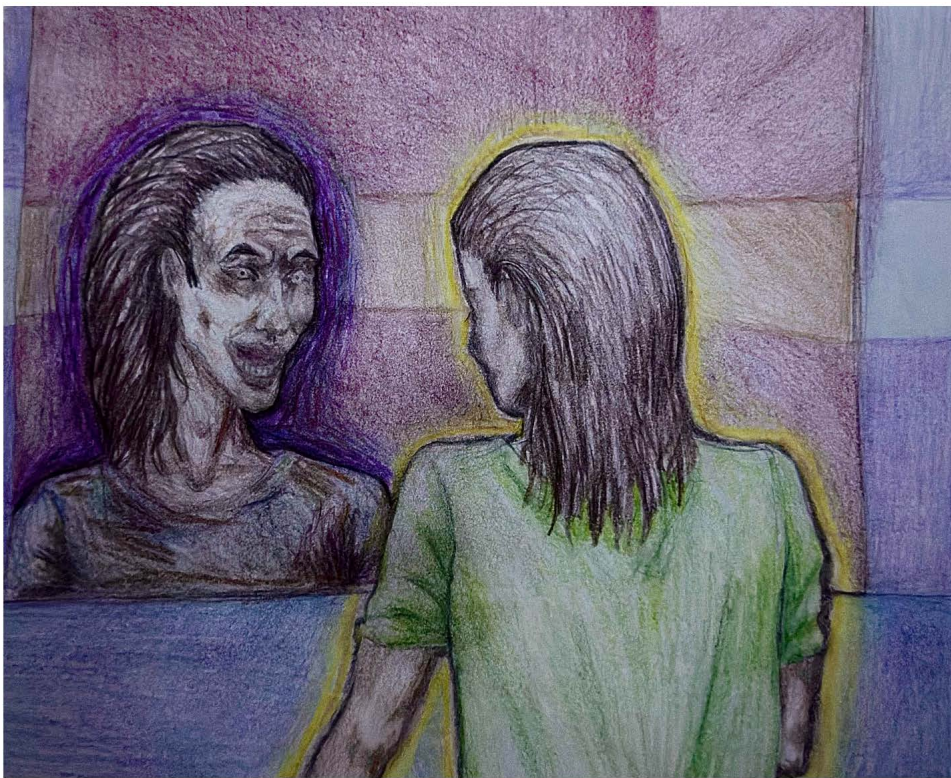
Response:

How can I visually explore the contrast between peace and stress through the physical and mental effects of stress? For my sustained investigation, I wanted to explore how peace and stress contrast, especially inside the mind. I also wanted to include works that represent stress' effects in your life. By doing this, I get to experiment with different art techniques, and learn how to visually represent something that is invisible, feelings.

Describe ways your sustained investigation developed through practice, experimentation, and revision.

Response:

I started by experimenting using color to show the difference between peace and stress. Bright colors for peace, and through practice, layered different colors for a more distorted look to represent stress. Early works focused more on the contrast between peace and paranoia. Later, I revised my SI to include more abstract pieces that concentrated more on the physical and mental effects stress can have on an individual. This evolution helped me capture not only the contrast between peace and stress, but also the effects it has on the mind and body.



## Image 1

Sustained Investigation

Height: 8

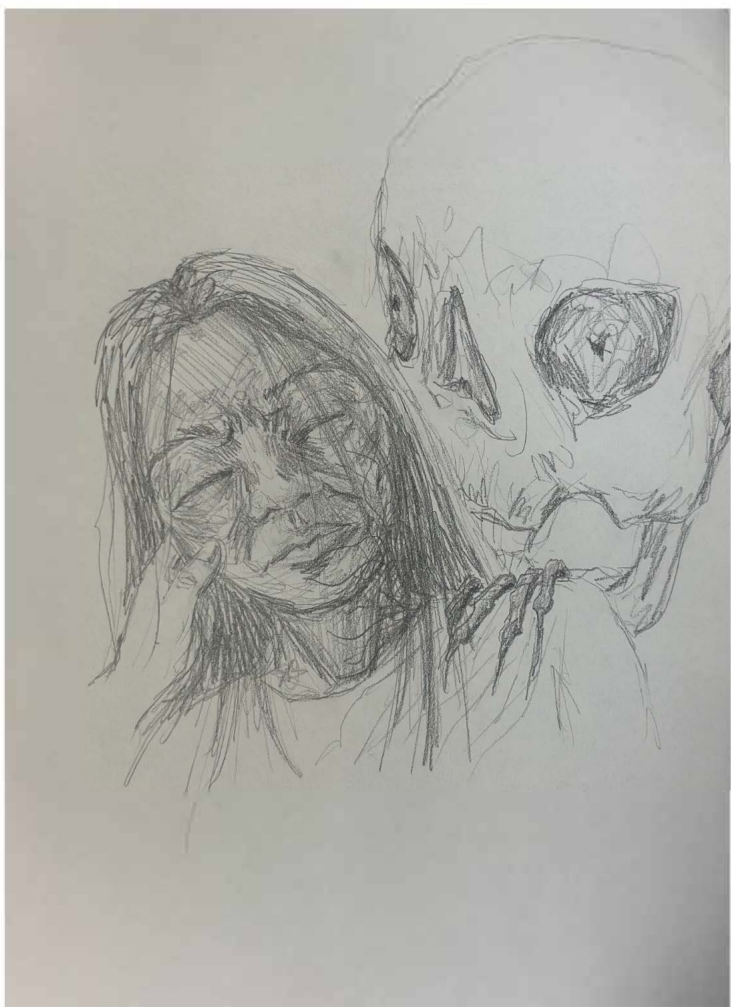
Width: 10

Materials: paper, colored pencil

Process(es):

man doesn't recognize himself,  
difference in aura = peace and paranoia

Use of Digital Tool(s): No



## Image 2

Sustained Investigation

Height: N/A

Width: N/A

Depth: N/A

Materials: paper, pencil

Process(es):

removed hand on cheek, reworked skull,  
revision included color to represent  
peace + paranoia

Use of Digital Tool(s): No



## Image 3

Sustained Investigation

Height: 9.5

Width: 8

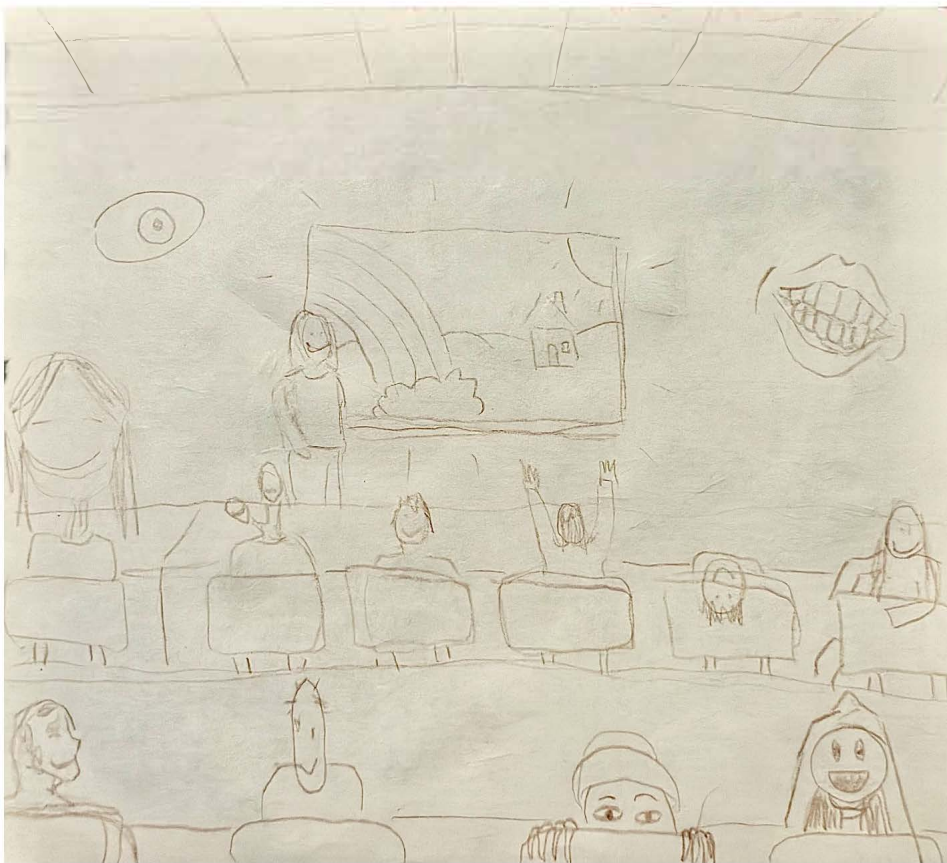
Materials: paper, colored pencil

Process(es):

skull = death, girl is scared + getting  
taken over by darkness

Use of Digital Tool(s): No





## Image 4

Sustained Investigation

Height: n/a

Width: n/a

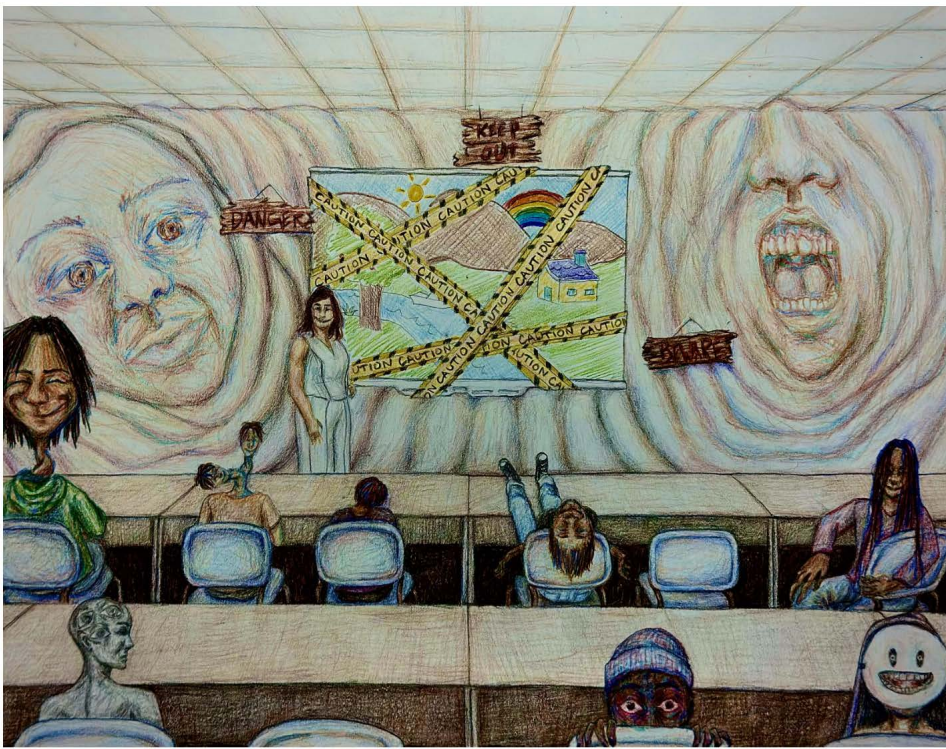
Depth: n/a

Materials: paper, pencil

Process(es):

changed features on walls to full face,  
emptied some chairs, added caution  
tape + warnings

Use of Digital Tool(s): No



## Image 5

Sustained Investigation

Height: 12

Width: 16

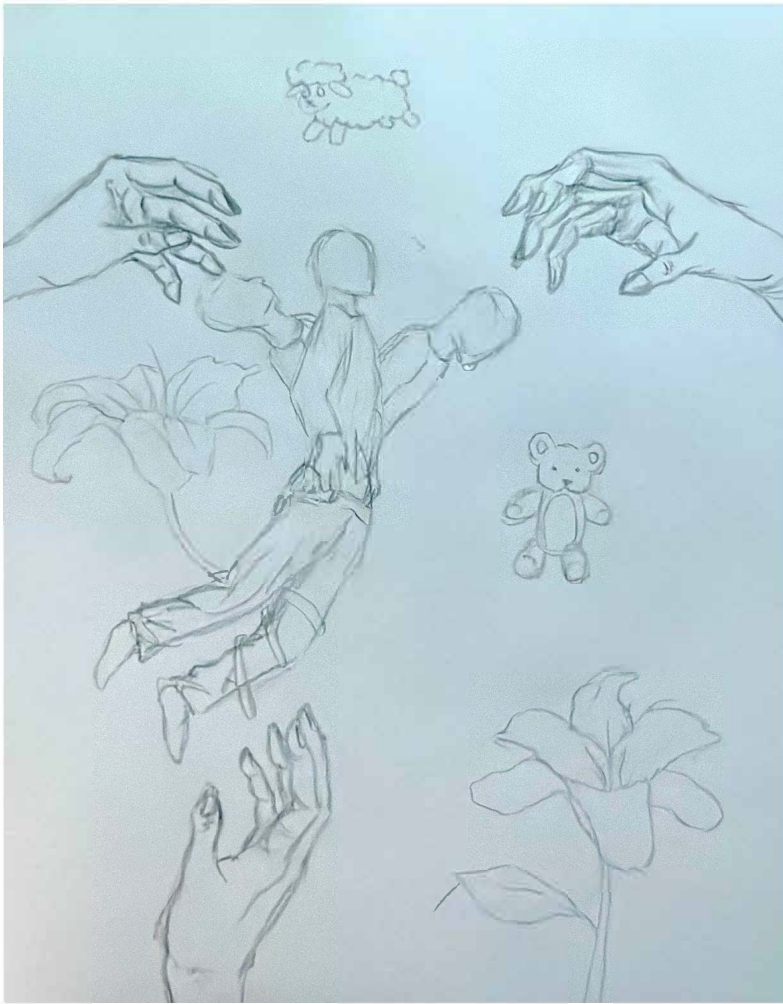
Materials: paper, colored pencils

Process(es):

eyes = being watched, warnings +  
caution tape keep you from peace,  
classroom = safe environment

Use of Digital Tool(s): No

Citation(s): my mom modeled for image



## Image 6

Sustained Investigation

Height: n/a

Width: n/a

Depth: n/a

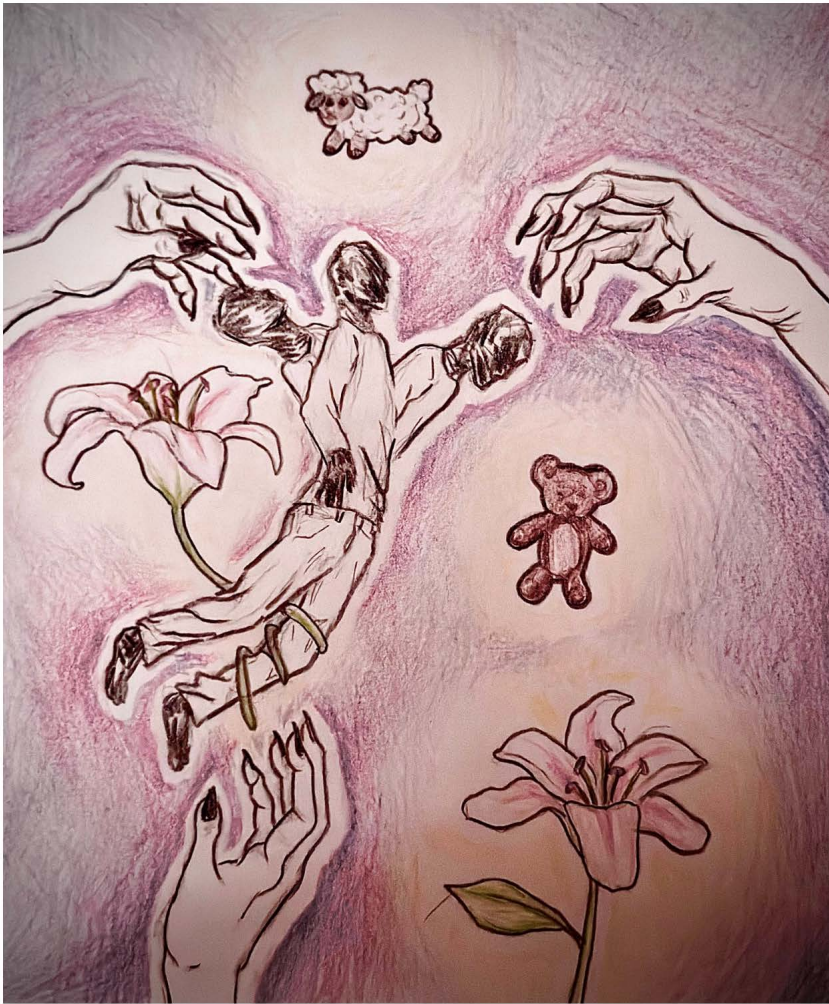
Materials: paper, pencil

Process(es):

lily around leg = holding onto peace,  
hands grabbing at subject = dragging  
into sleep paralysis

Use of Digital Tool(s): No





## Image 7

Sustained Investigation

Height: 10

Width: 8

Materials: paper, colored pencil

Process(es):

out of body experience, sheep + bear  
rep sleep, lilies = innocence, hands =  
paranoia

Use of Digital Tool(s): No



## Image 8

Sustained Investigation

Height: n/a

Width: n/a

Depth: n/a

Materials: paper, pencil

Process(es):

added a portal to end of tunnel, painted eyes watching girl, added light shining through cracks

Use of Digital Tool(s): No



## Image 9

Sustained Investigation

Height: 4

Width: 4

Depth: 0.25

Materials: canvas, acrylic paint

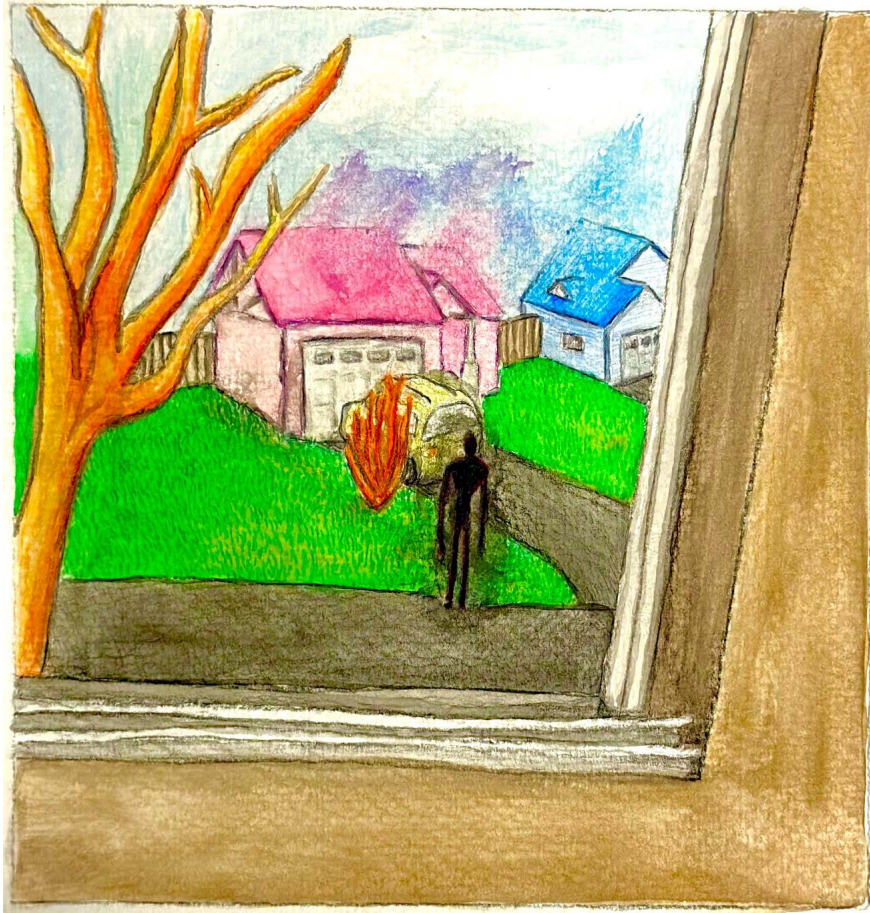
Process(es):

dark tunnel restraining girl from pushing  
forward, light represents peace

Use of Digital Tool(s): No

Citation(s): friend modeled for image





## Image 10

Sustained Investigation

Height: 8

Width: 8

Materials:

paper, watercolor, colored pencil

Process(es):

black figure = stalker, bright colors =  
peace, houses fading into sky = peace  
being disturbed

Use of Digital Tool(s): No





## Image 11

Sustained Investigation

Height: 11

Width: 8.5

Materials: paper, colored pencil

Process(es):

bright playground = peaceful setting,  
eclipse focus on girl = stress during  
childhood

Use of Digital Tool(s): No



## Image 12

Sustained Investigation

Height: n/a

Width: n/a

Depth: n/a

Materials: paper, pencil

Process(es):

revised window position, removed a few decorative items, shifted point of view lower

Use of Digital Tool(s): No



## Image 13

Sustained Investigation

Height: 9

Width: 12

Depth: 0.25

Materials:

canvas, paint pen, acrylic paint

Process(es):

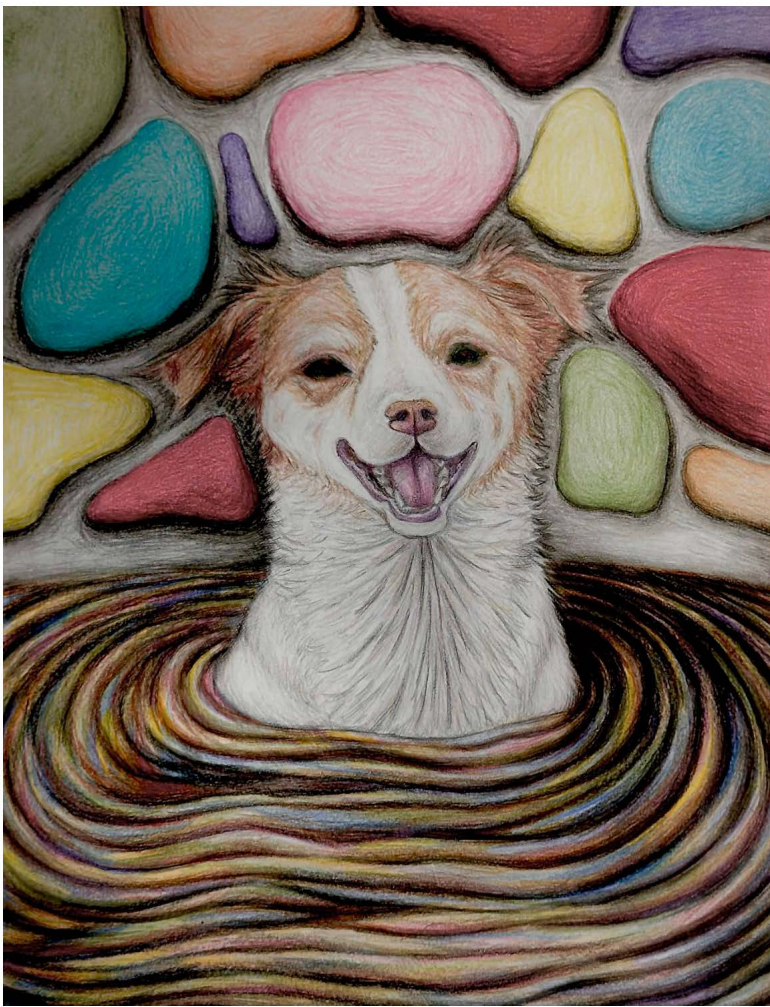
retro room = vibrant + calming, monster

= news instilling fear, brown = fear

infecting room

Use of Digital Tool(s): No





## Image 14

Sustained Investigation

Height: 11

Width: 8.5

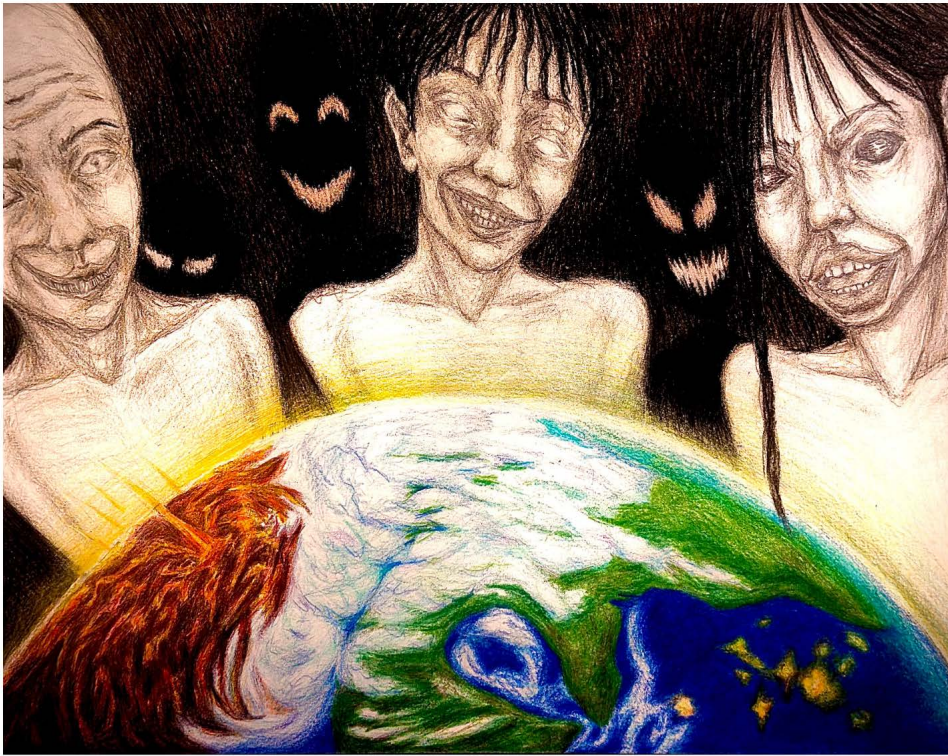
Materials: paper, colored pencil

Process(es):

dog = special memory, liquid = forgotten  
memories, important memories being  
forgotten due to stress

Use of Digital Tool(s): No





## Image 15

Sustained Investigation

Height: 9

Width: 12

Materials: paper, colored pencil

Process(es):

creepy people = paranoia, earth =  
mankind, fire = paranoia ruining  
humanity's perception

Use of Digital Tool(s): No

## Analytic Scoring Rubric Row A: Inquiry

**Writing Prompt 1:** *Identify the inquiry that guided your sustained investigation.*

1	2	3
Written evidence <b>does not identify</b> an inquiry.	Written evidence <b>identifies</b> an inquiry <b>AND</b> Visual evidence <b>demonstrates</b> the inquiry.	Written evidence <b>identifies</b> an inquiry. <b>AND</b> Visual evidence <b>demonstrates</b> the inquiry. <b>AND</b> The inquiry <b>guides</b> the development of the sustained investigation.

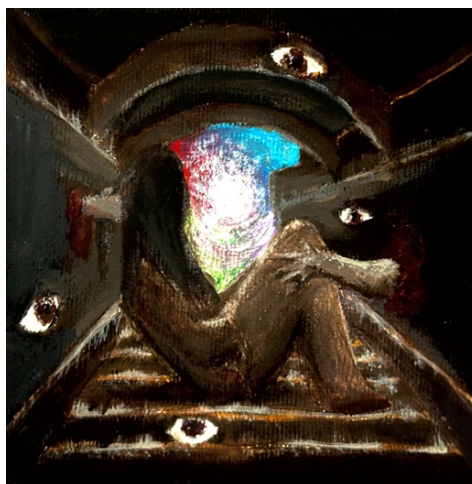
### Score Rationale

The written evidence identifies the inquiry as “I wanted to explore how peace and stress contrast,” which meets the requirement for identifying an inquiry. The visual evidence supports this inquiry in several works, though not consistently across the investigation, resulting in a score of 2 for Row A. In Images 1, 3, and 11, the use of color and compositional choices effectively communicate contrasting emotional states. For example, in Image 1, the foreground figure surrounded by a yellow aura conveys peacefulness, while the background figure with a purple aura represents paranoia. Image 3 includes a looming skull above a figure, symbolizing fear of death. In Image 11, a childhood setting is altered with dark purples and blacks cast by an eclipse, shifting the tone from calm to ominous. However, in other works such as Images 9, 13, and 15, the intent becomes less clear due to vague or unrefined visual execution. For instance, the muted palette and indistinct figure in Image 9 obscure the intended emotional message.

**Summary:** The inquiry is identified and supported by the visual evidence in parts of the portfolio, but it does not clearly or consistently guide the sustained investigation, justifying a score of 2.



**Image 3**



**Image 9**

Sustained Investigation Score: **Row A: Score: 2** • Row B: Score: 2 • Row C: Score: 2 • Row D: Score: 2