
AP[®] Music Theory

Sample Student Responses and Scoring Commentary

Inside:

Free-Response Question 1

- ☒ **Scoring Guidelines**
- ☒ **Student Samples**
- ☒ **Scoring Commentary**

Question 1: Melodic Dictation

9 points

General Instructions

Use EITHER the regular scoring guide OR an alternate scoring guide, whichever gives the higher score.



I. Regular Scoring Guide

- | | | |
|-----------|--|---------------------|
| A. | Award 1 point for each segment correct in both pitch and rhythm. | 1 point each |
| | <ul style="list-style-type: none">• A “segment” is any half measure of the original melody, even if occurring over a bar line or beginning on a metrically weak pulse. (In compound duple meter, a segment is any set of three contiguous eighth-note beats.)• To receive credit, a segment must not overlap with any other segment receiving credit.• Do not subdivide a note to identify a segment.• To receive credit, a segment <i>may</i> be metrically shifted up to one segment before or after its original position.• Give no credit for the final dotted quarter note if notation of pitches continues thereafter. | (max 8) |
| B. | If at least one segment is correct in pitch and rhythm, award 1 additional point to the total. For example, a response that is correct in all aspects receives a score of 8 + 1, or 9. Exception: Do not award a 9 unless all measures have the correct number of beats. Award an 8 (i.e., do not award the additional point) to an otherwise perfect response that does not use bar lines correctly. | 1 point |
| C. | Record any score of 4 or higher and move on to the next response. | |
| D. | If after applying I.A. and I.B. the score is less than 4, try an alternate scoring guide. | |

II. Alternate Scoring Guides (Do not award the additional point to the total.)

- | | | |
|-----------|---|--|
| A. | Award $\frac{1}{2}$ point per segment of correct pitches. (Maximum of 4 points) | $\frac{1}{2}$ point each
(max 4) |
| OR | | |
| B. | Award $\frac{1}{4}$ point per segment of correct rhythm. (Maximum of 2 points) | $\frac{1}{4}$ point each
(max 2) |

Rounding Fractional Scores

- Total scores of $\frac{1}{2}$ and $1\frac{1}{2}$ round up to the closest integer. Total scores of $2\frac{1}{2}$ and $3\frac{1}{2}$ round down to the closest integer.
- $\frac{1}{4}$ and $\frac{3}{4}$ points should be rounded to the closest integer.

III. Scores with Additional Meaning

- 1 This score may also be used for a response that does not have one segment correct in both pitch and rhythm but has two or more redeeming qualities. (Do not award the additional point.) Redeeming qualities may include good contour, or multiple correct pitches or rhythms that do not comprise a complete segment.
- 0 This score is used for a response that demonstrates an attempt to answer the question but has no redeeming qualities (or only one) or a response that is off-topic or irrelevant.

NR Reserved for blank responses.

IV. Scoring Notes

- A. The following notations will *not* receive credit: enharmonic equivalents; octave transpositions; dots *before* the notehead; accidentals *after* the notehead.
- B. If you use an alternate scoring guide, do not award the extra point to the total.
- C. If you try both regular and alternate scoring guides, award the higher of the scores if there is a difference.
- D. Scores from one guide may *not* be combined with those from another guide.

The melody is given below without bar lines and beams to assist in identifying segments (a segment is any half measure of the original melody, i.e., any set of three contiguous eighth-note beats):



Record points for correct segments in the boxes below. Use either the regular scoring guide or one of the alternate scoring guides.

Segment	1	2	3	4	5	6	7	8	Add. Pt.
Regular Scoring									
Alt. for Pitch ½ point									Max 4
Alt. for Rhythm ¼ point									

Question 1

Write your response to QUESTION 1 on this page.

MUSIC THEORY

SECTION II

Part A

Time—Approximately 1 hour and 10 minutes

Directions: Answer questions 1-7 in the space provided. If you choose to use the facing pages of manuscript paper for scratch work, be sure to save time for writing your final answer in the staves provided directly below each question. If you need to rewrite your answer to any question, use the facing page of music manuscript paper and indicate on the page with the question that your answer is on the facing page.

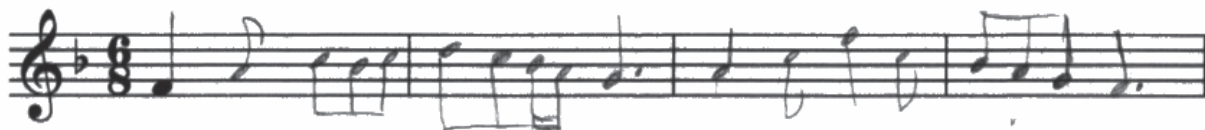
Questions 1-2

For each of these questions, you are to notate on the staves provided the correct pitch and rhythm of a short melody that you will hear. Make sure that any accidentals you use are appropriate for the key signature provided. In each case, the pulse will be established before the first playing of the melody.

Question 1. The melody will be played three times. There will be a pause of 30 seconds after the first playing and a one-minute pause after each subsequent playing. The melody you will hear uses all four of the measures provided below and contains no rests. The melody will be played on a violin.

The pitch of the first note has been provided. Be sure to notate the rhythm of that note. Now listen to the melody for the first time and begin working. 

Moderato



The melody for **Question 1** will now be played a second time. 

The melody for **Question 1** will now be played a final time. 

Question 1

Write your response to QUESTION 1 on this page.

MUSIC THEORY

SECTION II

Part A


Time—Approximately 1 hour and 10 minutes

Directions: Answer questions 1-7 in the space provided. If you choose to use the facing pages of manuscript paper for scratch work, be sure to save time for writing your final answer in the staves provided directly below each question. If you need to rewrite your answer to any question, use the facing page of music manuscript paper and indicate on the page with the question that your answer is on the facing page.

Questions 1-2

For each of these questions, you are to notate on the staves provided the correct pitch and rhythm of a short melody that you will hear. Make sure that any accidentals you use are appropriate for the key signature provided. In each case, the pulse will be established before the first playing of the melody.

Question 1. The melody will be played three times. There will be a pause of 30 seconds after the first playing and a one-minute pause after each subsequent playing. The melody you will hear uses all four of the measures provided below and contains no rests. The melody will be played on a violin.

The pitch of the first note has been provided. Be sure to notate the rhythm of that note. Now listen to the melody for the first time and begin working. 

Moderato



The melody for Question 1 will now be played a second time. 

The melody for Question 1 will now be played a final time. 

Question 1

Write your response to QUESTION 1 on this page.

MUSIC THEORY

SECTION II

Part A


Time—Approximately 1 hour and 10 minutes

Directions: Answer questions 1-7 in the space provided. If you choose to use the facing pages of manuscript paper for scratch work, be sure to save time for writing your final answer in the staves provided directly below each question. If you need to rewrite your answer to any question, use the facing page of music manuscript paper and indicate on the page with the question that your answer is on the facing page.

Questions 1-2


For each of these questions, you are to notate on the staves provided the correct pitch and rhythm of a short melody that you will hear. Make sure that any accidentals you use are appropriate for the key signature provided. In each case, the pulse will be established before the first playing of the melody.

Question 1. The melody will be played three times. There will be a pause of 30 seconds after the first playing and a one-minute pause after each subsequent playing. The melody you will hear uses all four of the measures provided below and contains no rests. The melody will be played on a violin.

The pitch of the first note has been provided. Be sure to notate the rhythm of that note. Now listen to the melody for the first time and begin working. 

Moderato



The melody for Question 1 will now be played a second time. 

The melody for Question 1 will now be played a final time. 

Question 1

Note: Student samples are quoted verbatim and may contain spelling and grammatical errors.

Overview

The question overviews can be found in the “Chief Reader Report on Student Responses” on [AP Central](#).

Sample: 1A

Score: 9

This represents an excellent response. All eight segments are correct in pitch and rhythm and 8 points were awarded. Following the Regular Scoring Guide, 1 point was added to the score of 8 for a total score of 9.

Sample: 1B

Score: 4

This represents a fair response. Three of the eight segments (two, seven, and eight) are correct in pitch and rhythm and were awarded 3 points. Segment one is incorrect in rhythm. Segments three, four, five, six, and seven are incorrect in pitch and rhythm. Following the Regular Scoring Guide, 1 point was added to the score of 3 for a total score of 4.

Sample: 1C

Score: 2

This represents a poor response. Segment one is correct in pitch and rhythm, and 1 point was awarded. Segment four has the correct rhythm but is incorrect in pitch. Segments three, five, six, seven, and eight are incorrect in both pitch and rhythm. Following the Regular Scoring Guide, 1 point was added to the score of 1 for a total score of 2.