



2025 AP[®] 3-D Art and Design

Sustained Investigation

Analytic Scoring Rubric and Score Rationale

Row B—Score 2

Written Evidence

Sustained Investigation

Identify the inquiry that guided your sustained investigation.

Response:

The focus of my sustained investigation was how can mental health be improved through architecture and one's surroundings? I examined how both natural and man made design elements such as light, space, material, and color can influence emotional well-being. By researching architectural psychology and applying design principles that support calmness, safety, and human connection, I aimed to create environments that foster healing, reduce stress, and support me

Describe ways your sustained investigation developed through practice, experimentation, and revision.

Response:

My sustained investigation developed through experimenting with ways to incorporate nature especially plants into architectural spaces to improve mental health. I explored how natural light, greenery, and organic forms affect mood and focus. Through sketches and models I refined my work by observing how plant placement, textures, and openness could create calming, restorative environments that support emotional well-being.



Image 1

Sustained Investigation

Height: 20

Width: 24

Depth: 0

Materials: Pencil, Canvas, Eraser

Process(es):

Sketched a piece representing graffiti
and street art as it is constantly
displayed on architecture

Use of Digital Tool(s): No



Image 2

Sustained Investigation

Height: 20

Width: 24

Depth: 0

Materials: Paint

Process(es):

Painted using different shades of green representing different colors of plants

Use of Digital Tool(s): No



Image 3

Sustained Investigation

Height: 12

Width: 18

Depth: 0

Materials: Digital, Sketchup

Process(es):

Floor plan of a Rehabilitation/Retreat center. Greenery is incorporated throughout the structure

Use of Digital Tool(s): Yes

Digital Tool(s) used: Sketch Up Free

Image 4

Sustained Investigation

Height: 6

Width: 20

Depth: 0

Materials: Digital, Sketchup

Process(es):

Elevation drawing added walls to the floor plan

Use of Digital Tool(s): Yes

Digital Tool(s) used: Sketch Up Free

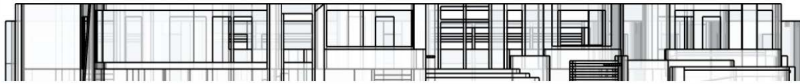


Image 5

Sustained Investigation

Height: 6

Width: 20

Depth: 0

Materials: Digital, Sketchup

Process(es):

Elevation drawing added walls to the floor plan

Use of Digital Tool(s): Yes

Digital Tool(s) used: Sketch Up Free

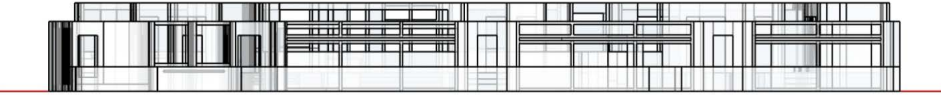




Image 6

Sustained Investigation

Height: 12

Width: 12

Depth: 0

Materials: Pencil Paper Eraser

Process(es): Wooden House in forest

Use of Digital Tool(s): No

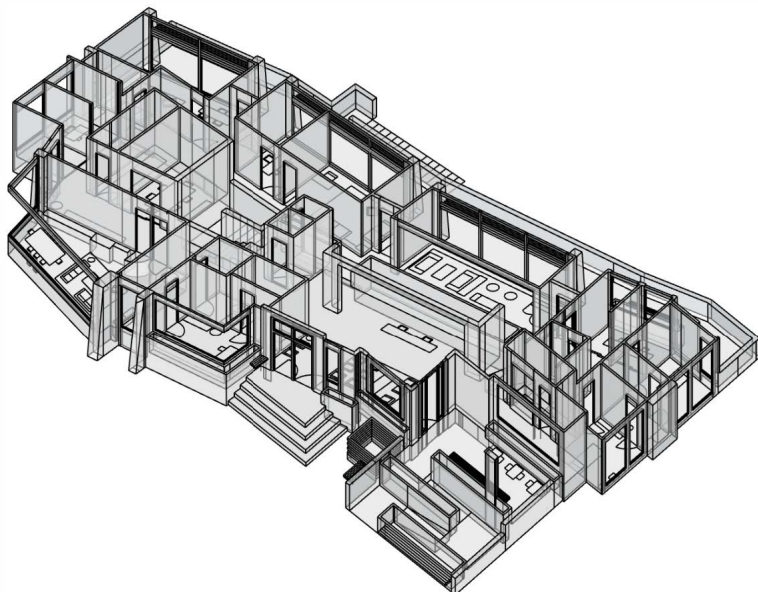


Image 7

Sustained Investigation

Height: 22

Width: 26

Depth: 0

Materials: Digital, Sketchup

Process(es):

Incorporated offices and medical spaces
that connect with the exterior
environment

Use of Digital Tool(s): Yes

Digital Tool(s) used: Sketch Up Free

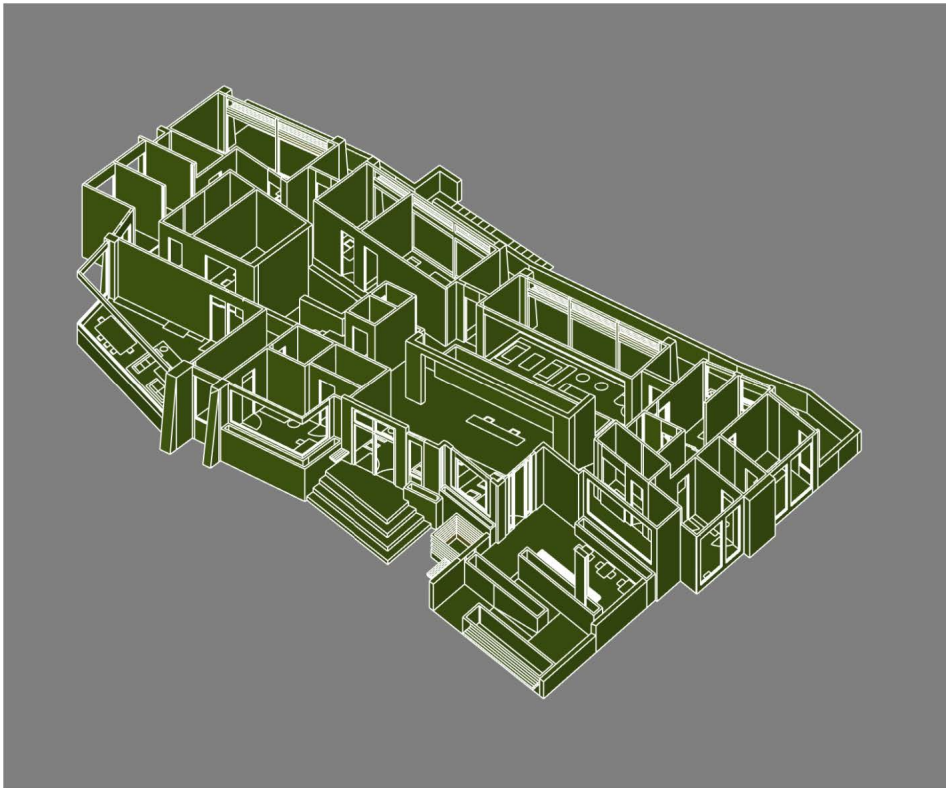


Image 8

Sustained Investigation

Height: 32

Width: 40

Depth: 0

Materials: Digital, Sketchup

Process(es):

All entrances and exits are accessible to
handicap

Use of Digital Tool(s): Yes

Digital Tool(s) used: Sketch Up Free

Image 9

Sustained Investigation

Height: 30

Width: 38

Depth: 0

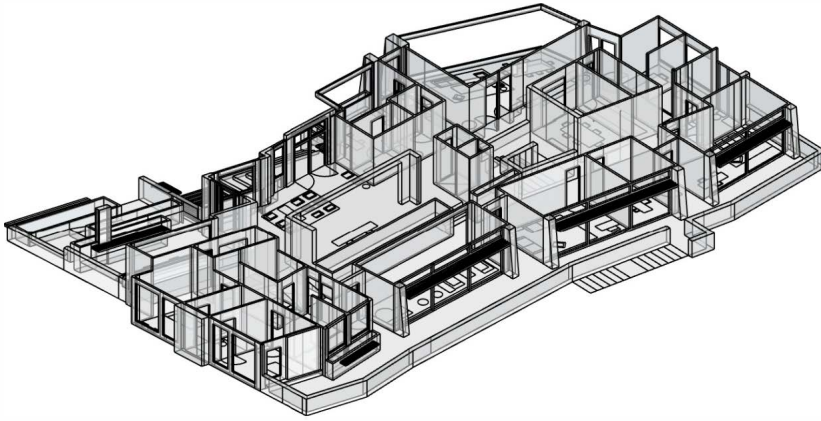
Materials: Digital Sketch Up

Process(es):

Used big glass windows to enhance lightning and outside greenery throughout the model

Use of Digital Tool(s): Yes

Digital Tool(s) used: Sketch Up Free



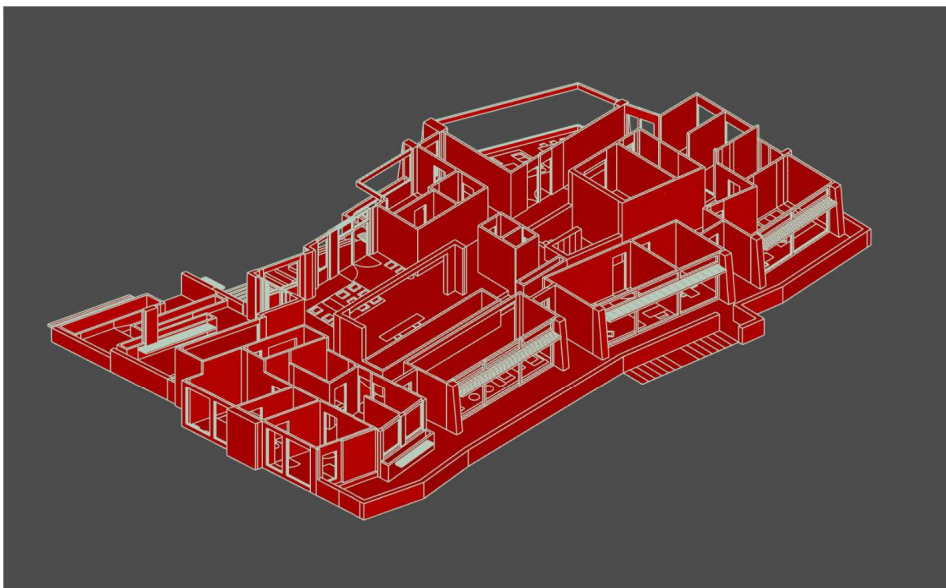


Image 10

Sustained Investigation

Height: 30

Width: 38

Depth: 0

Materials: Digital Sketch Up

Process(es):

Design focuses on bringing in light
however keeping the people using it
shaded

Use of Digital Tool(s): Yes

Digital Tool(s) used: Sketch Up Free

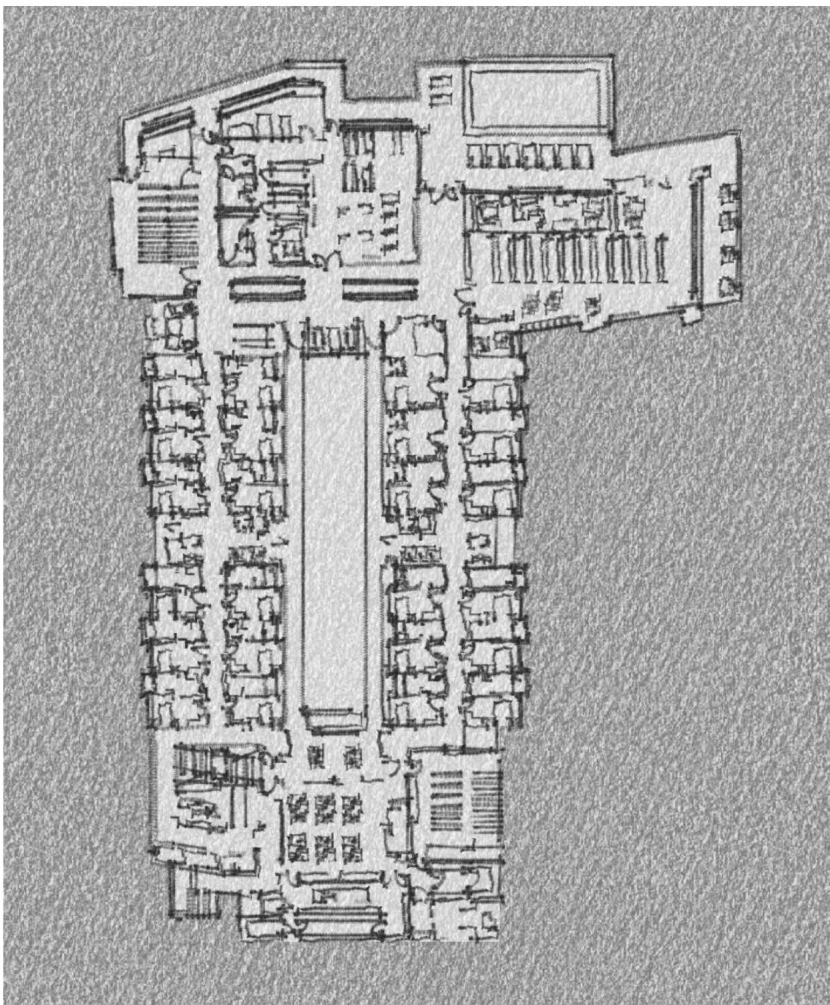


Image 11

Sustained Investigation

Height: 24

Width: 12

Depth: 0

Materials: Digital Sketch Up

Process(es):

Floor-plan of second floor. Includes living space, dinning spaces and entermtainment

Use of Digital Tool(s): Yes

Digital Tool(s) used: Sketch Up Free



Image 12

Sustained Investigation

Height: 40

Width: 30

Depth: 0

Materials: Spray Paint, Paint marker

Process(es):

Spray painted hearts using different colors

Use of Digital Tool(s): No



Image 13

Sustained Investigation

Height: 6

Width: 36

Depth: 23

Materials:

Wood, Glue, Box Cutter, Cardboard

Process(es):

Measured and sketched out dimensions using the 1/8th scale.

Use of Digital Tool(s): No



Image 14

Sustained Investigation

Height: 6

Width: 36

Depth: 18

Materials:

Wood, Glue, Box Cutter, Cardboard

Process(es):

Cut and glued wooden sticks

Use of Digital Tool(s): No



Image 15

Sustained Investigation

Height: 6

Width: 36

Depth: 23

Materials:

Wood, Glue, Box Cutter, Cardboard,
Plants and Paint

Process(es):

Painted model and added plants

Use of Digital Tool(s): No

Analytic Scoring Rubric Row B: Practice, Experimentation, and Revision

Writing Prompt 2: *Describe ways your sustained investigation developed practice, experimentation, and revision.*

1	2	3
<i>Visual</i> evidence of practice, experimentation, and revision does not relate to a sustained investigation.	<i>Visual</i> and <i>written</i> evidence of practice, experimentation, and revision relates to a sustained investigation.	<i>Visual</i> evidence of practice, experimentation, and revision demonstrates development of the sustained investigation. AND <i>Written</i> evidence describes ways the sustained investigation developed through practice, experimentation, and revision.

Score Rationale

This portfolio earned a score of 2 because both the written and visual evidence of practice, experimentation, and revision relate to the sustained investigation, though the development lacks clarity and depth. The written evidence identifies an exploration of how mental health can be improved through architecture and natural surroundings. It references material decisions—such as the inclusion of natural light, greenery, and organic forms—and notes the refinement of plant placement and layout in models. However, the written descriptions are brief and do not clearly articulate how specific design choices were revised over time based on observation or testing.

The visual evidence supports the theme, particularly in later works such as Image 9, where glass windows are used to enhance natural light and exterior views, and in Image 15, where raised bed planters are added to the final architectural model. These decisions demonstrate engagement with the guiding idea. However, the portfolio lacks a consistent visual thread showing a progression of experimentation or rethinking of form. While the inclusion of sketches, floor plans, digital renderings, and physical models supports the architectural direction, there is limited evidence of visual revision or transformation across iterations.

Summary: Visual and written evidence of practice, experimentation, and revision relate to the sustained investigation, but the development is limited in depth and clarity. These conditions support a score of 2 in Row B.

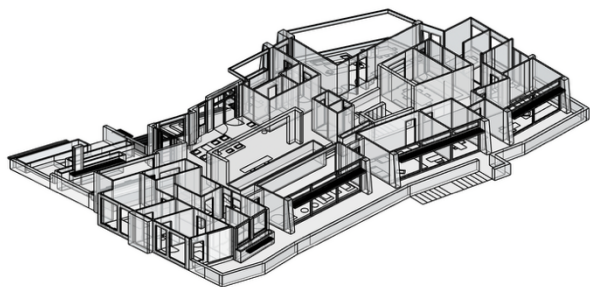


Image 9



Image 15

Sustained Investigation Score: Row A: Score: 2 • **Row B: Score: 2** • Row C: Score: 2 • Row D: Score: 2