



2025 AP[®] 3-D Art and Design

Sustained Investigation

Analytic Scoring Rubric and Score Rationale

Row A—Score 3

Written Evidence

Sustained Investigation

Identify the inquiry that guided your sustained investigation.

Response:

How do the questions that arise in adolescence shape our understanding of who we are becoming? I wanted to show my growth with art that expanded upon my personal experiences, dreams, and anxieties about the future. This inquiry guided my sustained investigation by helping me think about specific things in my life that I found to be meaningful to capture as an art piece.

Ultimately, I wanted to show how reflecting on my youth and meditating on present-day events is extremely relevant and useful.

Describe ways your sustained investigation developed through practice, experimentation, and revision.

Response:

My sustained investigation developed through practice, experimentation, and revision as I explored how memory shapes identity. I used nostalgic materials such as clay, fabric, paint, and toys that evoked childhood emotions (1, 3, 8). I experimented with motion and interactive elements to reflect spontaneous moments and recent life lessons (7, 8). Through revision, I hung my works instead of using pedestals, capturing memories as fleeting mental images—like thoughts suspended in time, always on the verge of drifting away.



Image 1

Sustained Investigation

Height: 48

Width: 36

Depth: 12

Materials:

Clay, plaster, wire, acrylic, pigskin reflect tension between past and present and body's rawness.

Process(es):

Sculpted human features on horse.

Warm light is youth. Skin used to show decay/dangers of nostalgia.

Use of Digital Tool(s): No

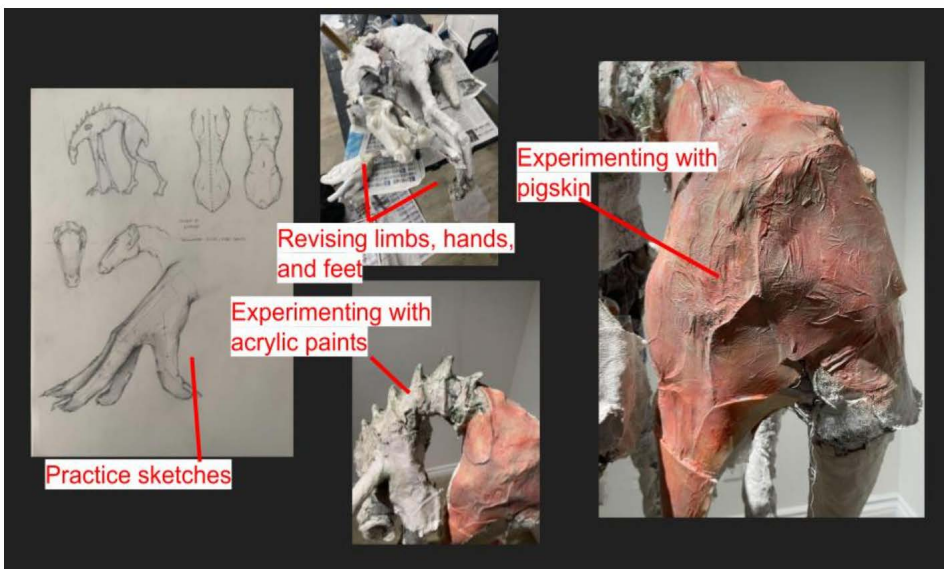


Image 2

Sustained Investigation

Height: NA

Width: NA

Depth: NA

Materials:

Experimented, revised, and replaced various materials for overall disturbing look

Process(es):

Wanted to fulfill decaying, horrific look while maintaining nostalgic, memorable atmosphere

Use of Digital Tool(s): Yes

Digital Tool(s) used:

Used Google Slides to collage process images of sustain investigation

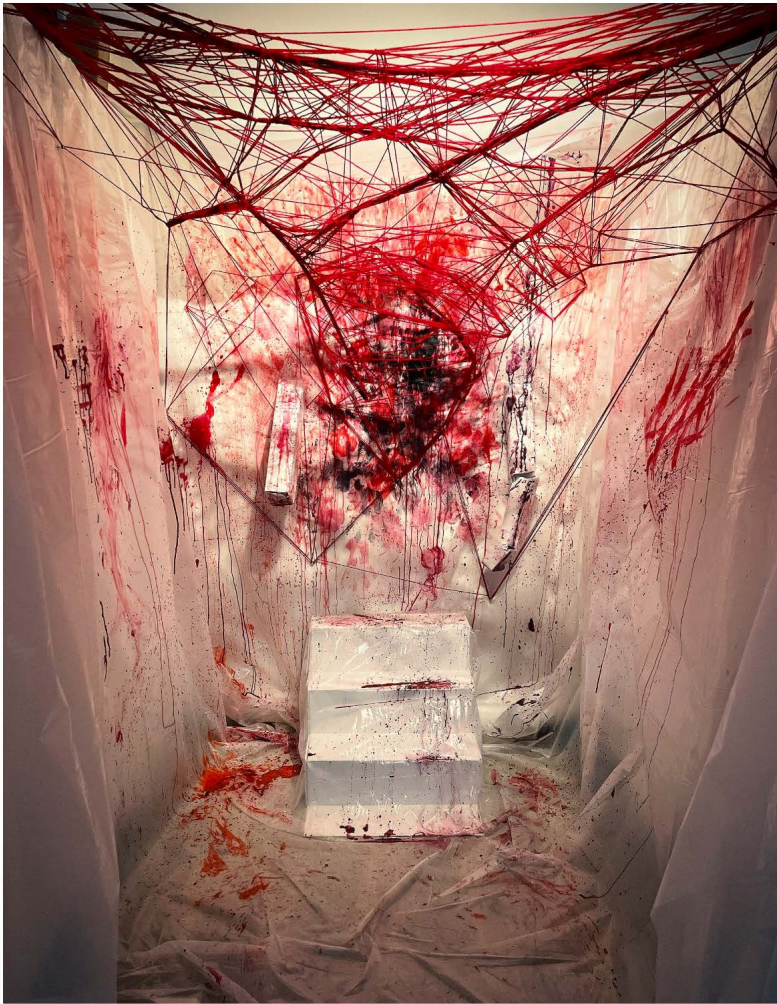


Image 3

Sustained Investigation

Height: 96

Width: 84

Depth: 96

Materials:

Plastic wrap, yarn, acrylic show connection and tragic endings to once treasured dreams.

Process(es):

Wrapped room in plastic wrap.
Splattered red paints as blood to exaggerate letting go of dreams.

Use of Digital Tool(s): No



Image 4

Sustained Investigation

Height: 60

Width: 72

Depth: 72

Materials:

Acrylic glass panel and spray paint for emerging tumor, fabric juxtaposes peace and chaos.

Process(es):

Heated acrylic glass and pushed spikes, spray painted object, hung object and fabric in spiky forms.

Use of Digital Tool(s): No



Image 5

Sustained Investigation

Height: 48

Width: 24

Depth: 20

Materials:

Clay, plaster, and paper mache give piece structure, feathers immerse viewer into mysterious setting

Process(es):

Created owl, wings, human features, positioned on wood block, covered in feathers, black background.

Use of Digital Tool(s): No



Image 6

Sustained Investigation

Height: 96

Width: 60

Depth: 36

Materials:

Trash bags and found objects
exaggerate tossed dreams and
opportunities. Wire gives bags structure.

Process(es):

Created structured trash bags, designed
with found objects, made music sheet,
hung objects

Use of Digital Tool(s): No



Image 7

Sustained Investigation

Height: 60

Width: 52

Depth: 4

Materials:

Charcoal on loose canvas portrays artistic side. Photographed on mountainside for expansive showing.

Process(es):

Cut hole in middle with floating sun to have rays of light shine through. Flag shows my character.

Use of Digital Tool(s): No



Image 8

Sustained Investigation

Height: 74

Width: 144

Depth: 120

Materials:

White fabrics show purity of youth/infancy. Projection shows memories of youth.

Process(es):

Hung white fabrics in a maze-like setting. Torn fabrics show growing troubles. Kids play around.

Use of Digital Tool(s): No



Image 9

Sustained Investigation

Height: 72

Width: 48

Depth: 24

Materials:

Acrylic on canvas shows imagined kids drawings. Fabrics used to represent flowing innocence.

Process(es):

Fabrics and bubbles spill out of canvas showing the overflowing of imagination.

Fantasy & reality.

Use of Digital Tool(s): Yes

Digital Tool(s) used:

Used Photoshop to shrink kid making the piece feel overwhelming and intimidating.



Image 10

Sustained Investigation

Height: 24

Width: 36

Depth: 18

Materials:

Wires show branching relationships.

Fabric twisted show lessening
innocence. Light shows expansions.

Process(es):

Wire rings formed tree with branching
relationships. Light reflections show
expansion and growth.

Use of Digital Tool(s): No



Image 11

Sustained Investigation

Height: 30

Width: 18

Depth: 24

Materials:

Rocks show destruction. Paper mache on wire with light shows rising flame.

Process(es):

Spilled rocks to show a destroyed setting. Fire emerging shows how I work with what is given.

Use of Digital Tool(s): No



Image 12

Sustained Investigation

Height: 72

Width: 60

Depth: 24

Materials:

Acrylic on plaster hands show dehumanization. Torn fabrics create drama and sound.

Process(es):

Created hands that rip fabric reveal self underneath. Demonic hands represent nail biting insecurity

Use of Digital Tool(s): No

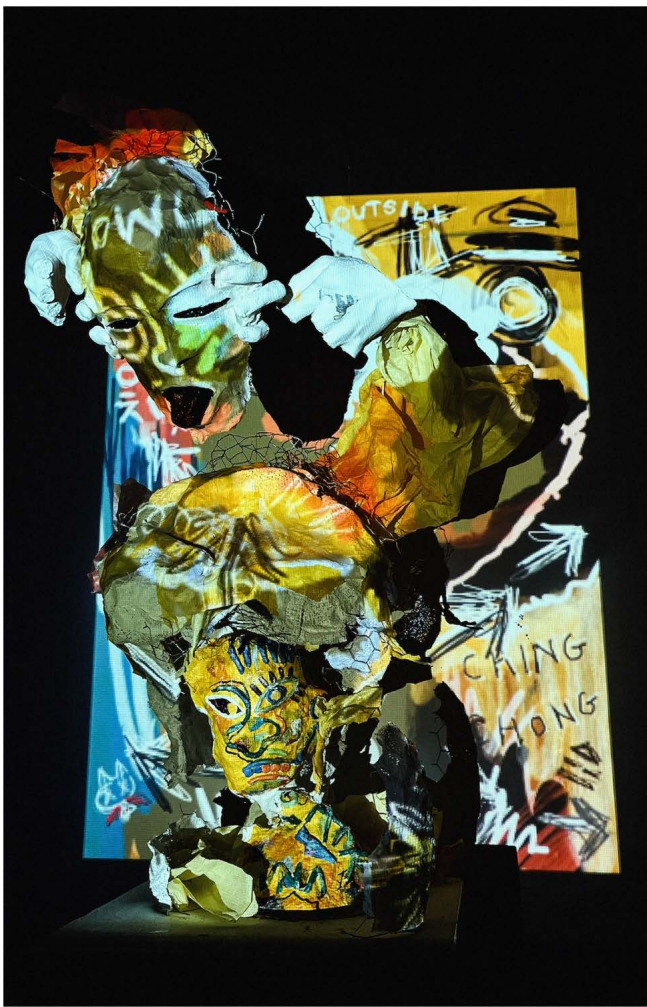


Image 13

Sustained Investigation

Height: 48

Width: 30

Depth: 24

Materials:

Plaster figure is external effect of racism.

Clay heart, inner. Projection show exposure to racism.

Process(es):

Used digital strokes and words to show how racial stereotypes reshaped my heart and identity

Use of Digital Tool(s): Yes

Digital Tool(s) used:

Projection on Procreate shows the shining of racism that shapes human being.



Image 14

Sustained Investigation

Height: 8

Width: 5

Depth: 4

Materials:

David statue photographed around graffiti to show how the environment shapes me.

Process(es):

Marked up David statue to show external influences on self. Surrounding shows dramatic influences.

Use of Digital Tool(s): Yes

Digital Tool(s) used:

Enhanced lights and darks with photoshop to show how influences can be both good and bad.

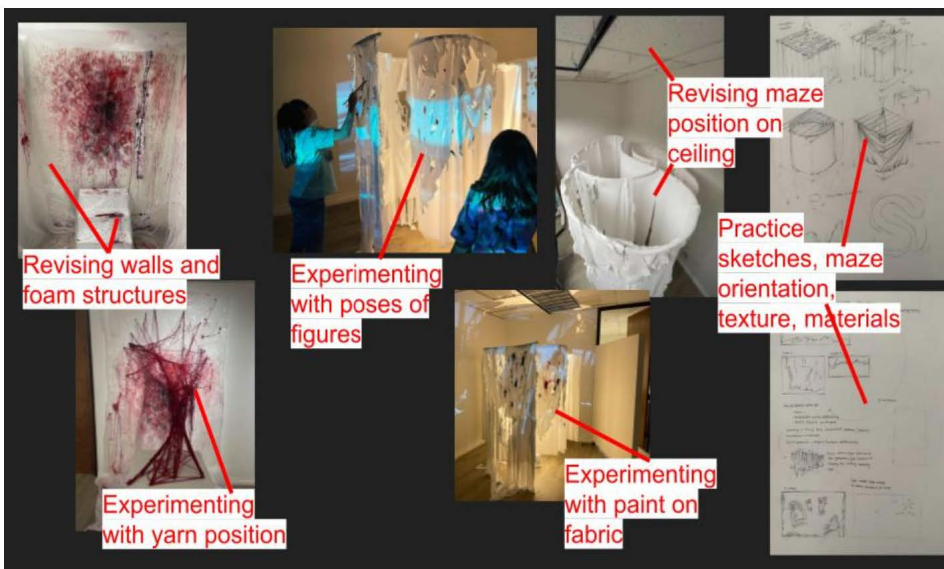


Image 15

Sustained Investigation

Height: NA

Width: NA

Depth: NA

Materials:

Experimented with subjects, materials, and environment to create installation based pieces

Process(es):

Constantly switched orientation and material usage in environment to achieve sustained investigation

Use of Digital Tool(s): Yes

Digital Tool(s) used:

Used Google Slides to collage various process images together

Analytic Scoring Rubric Row A: Inquiry

Writing Prompt 1: *Identify the inquiry that guided your sustained investigation.*

1	2	3
Written evidence does not identify an inquiry.	Written evidence identifies an inquiry AND Visual evidence demonstrates the inquiry.	Written evidence identifies an inquiry. AND Visual evidence demonstrates the inquiry. AND The inquiry guides the development of the sustained investigation.

Score Rationale

This portfolio earned a score of 3 because the written evidence identifies an inquiry, and the visual evidence demonstrates and develops that inquiry across the sustained investigation. The student asks, “How do the questions that arise in adolescence shape our understanding of who we are becoming?” and builds the investigation by reflecting on personal experiences, dreams, and anxieties about the future. This inquiry is consistently reinforced through conceptually rich and materially varied artworks that evolve in scale, complexity, and emotional tone.

In Image 1, the artist uses surreal visual language to express the “tension between past and present,” represented by a skeletal rocking horse and human-animal hybrid forms, symbolizing nostalgia and decay. Image 6 furthers the investigation by addressing “tossed dreams and opportunities,” realized through hanging structures made of trash bags and found materials. Throughout the body of work, installation strategies, mixed media, and personal symbolism are used to explore identity formation, memory, and emotional growth. The written evidence reflects a purposeful line of questioning, and the visual work builds meaning through iterative and thematic development.

Summary: The inquiry is clearly identified, demonstrated in the visual work, and effectively guides the development of the sustained investigation. The portfolio reflects an ongoing process of discovery grounded in personal experience, supporting a score of 3 in Row A.



Image 1



Image 6

Sustained Investigation Score: **Row A: Score:3** • Row B: Score:3 • Row C: Score:3 • Row D: Score: 3