



2025 AP[®] 2-D Art and Design

Sustained Investigation

Analytic Scoring Rubric and Score Rationale

Row D—Score 3

Written Evidence

Sustained Investigation

Identify the inquiry that guided your sustained investigation.

Response:

How can I use self neglect in both setting design and character? There was an allure to abandoned places/people as cohesive, calming, natural, & how they heal together, that spoke to my experiences of social isolation that felt inherent to my life, and a hope that I could one day escape. I created two stories, one overwhelming, and the other distanced and lonely in comparison to the world. Both versions of the same base idea, but reflect the messiness & beauty in healing one's relationship to the world and themselves that could never be separated.

Describe ways your sustained investigation developed through practice, experimentation, and revision.

Response:

I use color and symbols to show means of healing that are similar but take different aesthetics (isolation:connection vs dehumanization:self acceptance). [1-5] use fresh calming colors and overgrown nature opposed to industrial darker colors in [6-8 14] showing artificiality and nature as two forms of the same idea. Sky and space depict hope, freedom, and loneliness that aren't antithetical but parts of distance from identity (anonymity in key character designs). Man always left a mark on settings: homes, industry, wanderers, language. The world and individuals always influence each other.

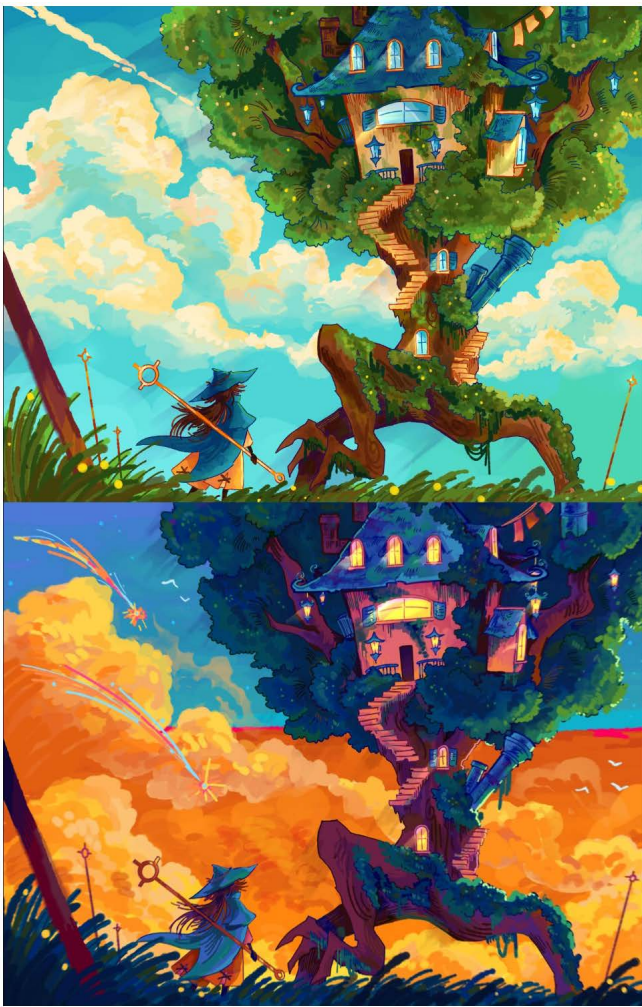


Image 1

Sustained Investigation

Height: 28

Width: 45

Materials: Digital Art

Process(es):

Showing 2 unkempt impersonal characters meet, variation in lighting conveys ambiguity in narrative

Use of Digital Tool(s): Yes

Digital Tool(s) used:

Procreate (iPad with apple pencil)



Image 2

Sustained Investigation

Height: 8.5

Width: 11

Materials: Digital art

Process(es):

Exploration of characters' relationship,
more setting exploration via islands, red
focal points

Use of Digital Tool(s): Yes

Digital Tool(s) used:

Procreate (iPad with apple pencil)



Image 3

Sustained Investigation

Height: 18

Width: 9.5

Materials: Digital Art

Process(es):

Showing home/peace built on overgrown
purposeless creature, man-made
becomes nature when neglected

Use of Digital Tool(s): Yes

Digital Tool(s) used:

Procreate (iPad with apple pencil)



Image 4

Sustained Investigation

Height: 11

Width: 8

Materials: Digital Art

Process(es):

Further exploration of setting, warm colors contrast against turquoise sky for focus

Use of Digital Tool(s): Yes

Digital Tool(s) used:

Procreate (w/ Apple Pencil)



Image 5

Sustained Investigation

Height: 16

Width: 11.5

Materials:

Multimedia sketchbook paper, pen, colored pencil, lined paper, post-it notes, scrap paper

Process(es):

Playing w/ whimsical color pallets, combining man-made with overgrown villages- who will live here?

Use of Digital Tool(s): Yes

Digital Tool(s) used:

Procreate (for compiling photos)

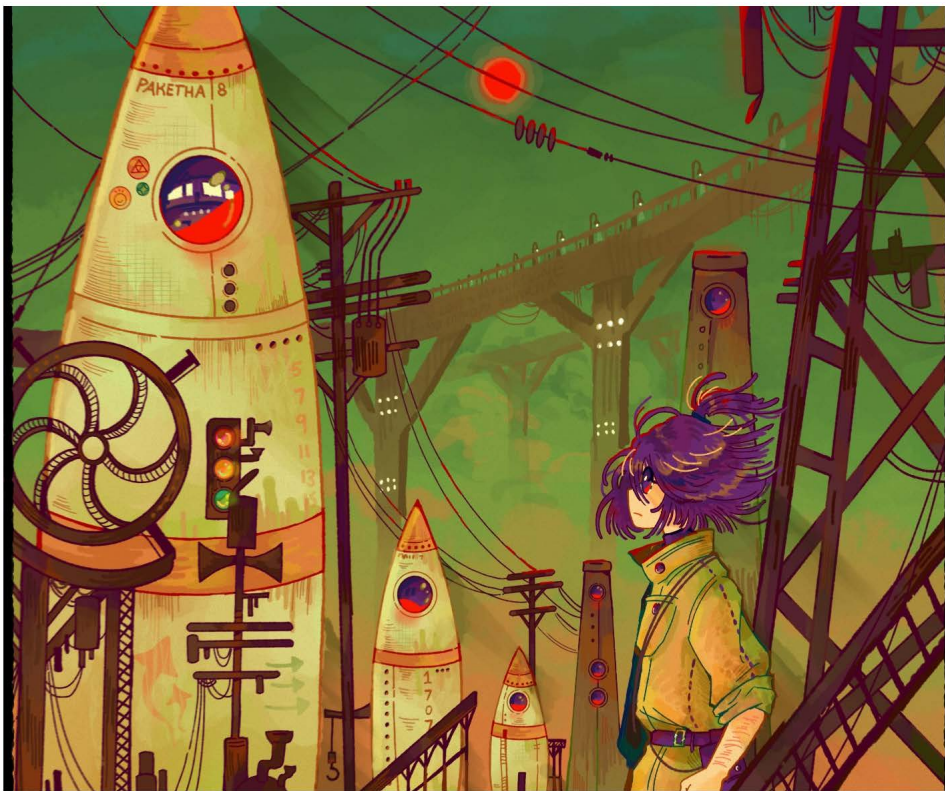


Image 6

Sustained Investigation

Height: 28

Width: 22

Materials: Digital Art

Process(es):

Creating dirty/sprawling world; reflects
protag, repurposed spaceships show
abandoned dreams

Use of Digital Tool(s): Yes

Digital Tool(s) used:

Procreate (w/ Apple Pencil)



Image 7

Sustained Investigation

Height: 28

Width: 22

Materials: Digital Art

Process(es):

Capturing calm but trashfilled setting;
uses Movin' Out playing to lack of
upward social mobility

Use of Digital Tool(s): Yes

Digital Tool(s) used:

Procreate (w/ Apple Pencil)

Citation(s):

Joel, Billy. "Movin' Out (Anthony's
Song)" The Stranger, Columbia, 1977.



Image 8

Sustained Investigation

Height: 28

Width: 22

Materials: Digital Art

Process(es):

Showing symbol of whimsy/hope as unfit, & unfound in how the protagonist identifies himself & world

Use of Digital Tool(s): Yes

Digital Tool(s) used:

Procreate (iPad w/ Apple Pencil)



Image 9

Sustained Investigation

Height: 28.7

Width: 17.7

Materials: Digital Art

Process(es):

Using same elements

(space/powerlines) as [6] to show feeling
when protagon meets deuteragonist

Use of Digital Tool(s): Yes

Digital Tool(s) used:

Procreate (w/ Apple Pencil)

Image 10

Sustained Investigation

Height: 16

Width: 11.5

Materials:

Post-it notes, scrap papers, pen, multimedia sketchbook paper, stickers

Process(es):

Exploring themes for character, industrial setting, no pencil sketch and mix of paper textures

Use of Digital Tool(s): Yes

Digital Tool(s) used:

Procreate (for compiling photos)





Image 11

Sustained Investigation

Height: 4.8

Width: 8

Materials: Digital Art

Process(es):

Lineless thumbnails, ironing out character designs and experimenting with color contrast + shapes

Use of Digital Tool(s): Yes

Digital Tool(s) used:

Procreate (w/ Apple Pencil)



Image 12

Sustained Investigation

Height: 16

Width: 11.5

Materials:

Pen, multimedia sketchbook paper, pencil

Process(es):

Brainstorming themes, connecting to symbols and motifs, and how characters will contrast setting

Use of Digital Tool(s): Yes

Digital Tool(s) used:

Procreate (for compiling photos)

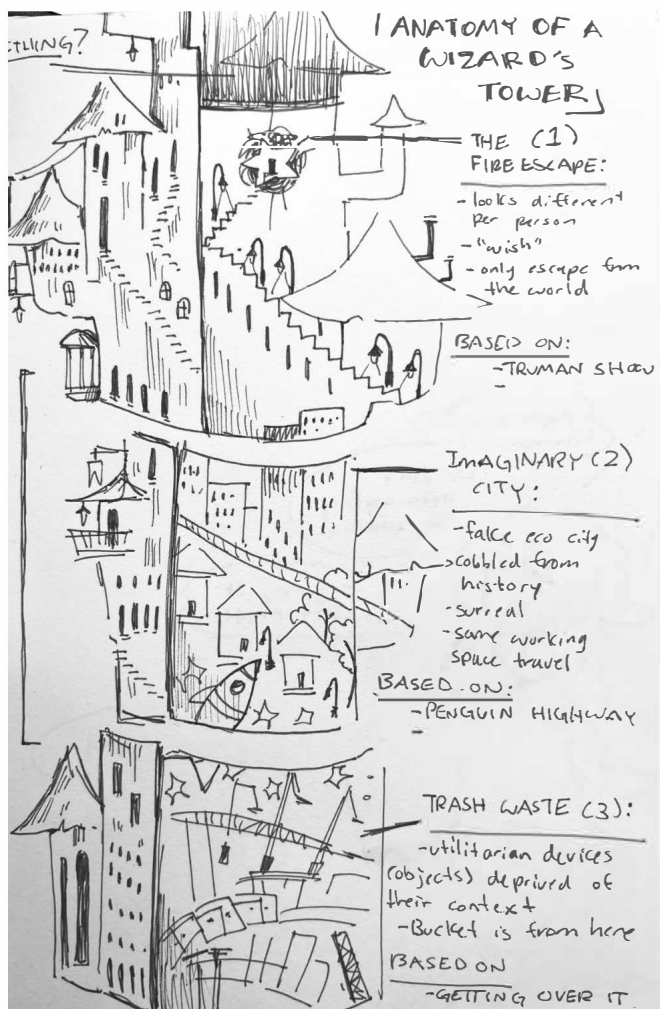


Image 13

Sustained Investigation

Height: 8

Width: 4

Materials:

Pen, multimedia sketchbook paper

Process(es):

Initial exploration/plans for [14], fleshing out setting, incorporating plot into setting structure

Use of Digital Tool(s): No

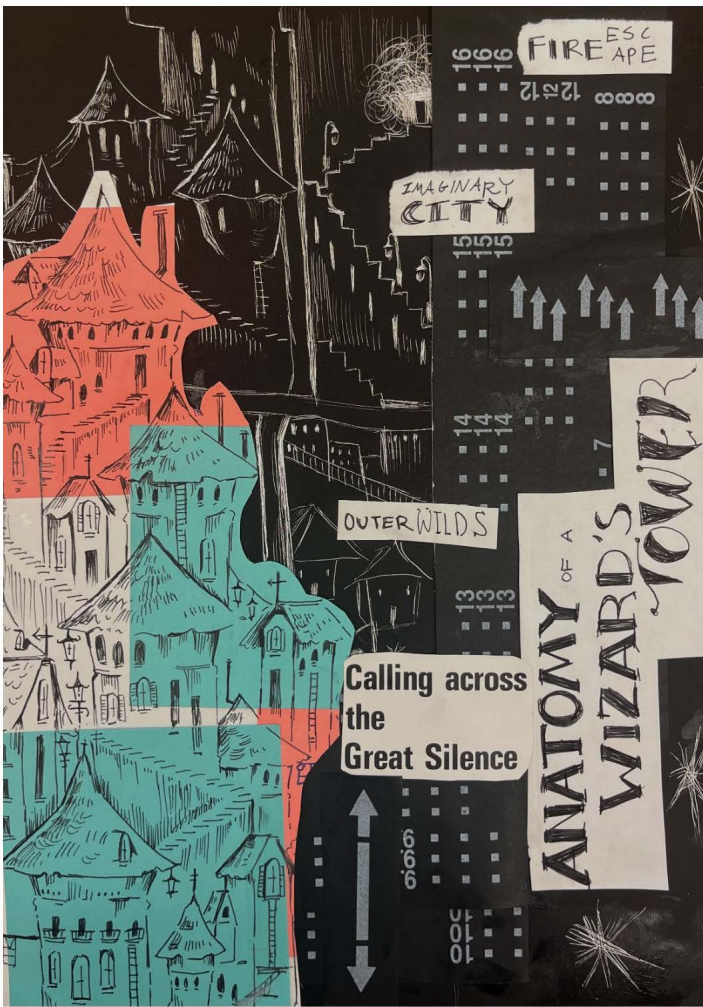


Image 14

Sustained Investigation

Height: 11

Width: 8

Materials:

Scratch board, fine-point pilot pen, film backing, magazine clipping

Process(es):

Portraying messy world of old cliché, paralleling with escapism in space travel, mixing textures

Use of Digital Tool(s): No



Image 15

Sustained Investigation

Height: 10

Width: 10

Materials: Digital Art (lines only)

Process(es):

Fisheye perspective convey barricaded atmosphere, messy room and its props of character show habits

Use of Digital Tool(s): Yes

Digital Tool(s) used:

Procreate (w/ Apple Pencil)

Analytic Scoring Rubric Row D: 2-D Art and Design Skills		
1	2	3
<i>Visual</i> evidence of rudimentary and moderate 2-D skills.	<i>Visual</i> evidence of moderate and good 2-D skills.	<i>Visual</i> evidence of good and advanced 2-D skills.

Score Rationale

This portfolio earns a score of 3 due to the consistent application of advanced 2-D skills across the body of work. The sustained investigation explores self-neglect through character and setting design, using color, value, perspective, and digital layering to visually represent emotional distance and internal conflict. In Image 3, the artist demonstrates highly developed control of digital space, contrast, and scale to construct a whimsical yet neglected environment, blending architectural elements with organic forms to symbolize healing through abandonment. Image 7 further supports this inquiry, where a chaotic cityscape combines saturated hues, figure-ground relationships, and repetition of form to create a sense of isolation and stillness despite the surrounding visual noise.

The artist employs advanced compositional strategies, such as zigzagging fire escapes that guide the viewer's eye downward and atmospheric perspective that enhances spatial illusion. Across the portfolio, the thoughtful use of visual hierarchy, color temperature, and digital tools contributes to the clarity of narrative and mood. These visual decisions not only support the inquiry but also reflect confident command of 2-D elements.

Summary: This portfolio earns a score of 3 because there is visual evidence of advanced 2-D skills. Compositional choices, spatial organization, and design principles are consistently evident and support the development of the sustained investigation.



Image 3



Image 7

Sustained Investigation Score: Row A: Score: 3 • Row B: Score: 3 • Row C: Score: 3 • **Row D: Score: 3**