



# **2025 AP<sup>®</sup> 2-D Art and Design**

**Sustained Investigation**

**Analytic Scoring Rubric and Score Rationale**

**Row D—Score 2**

# Written Evidence

## Sustained Investigation

Identify the inquiry that guided your sustained investigation.

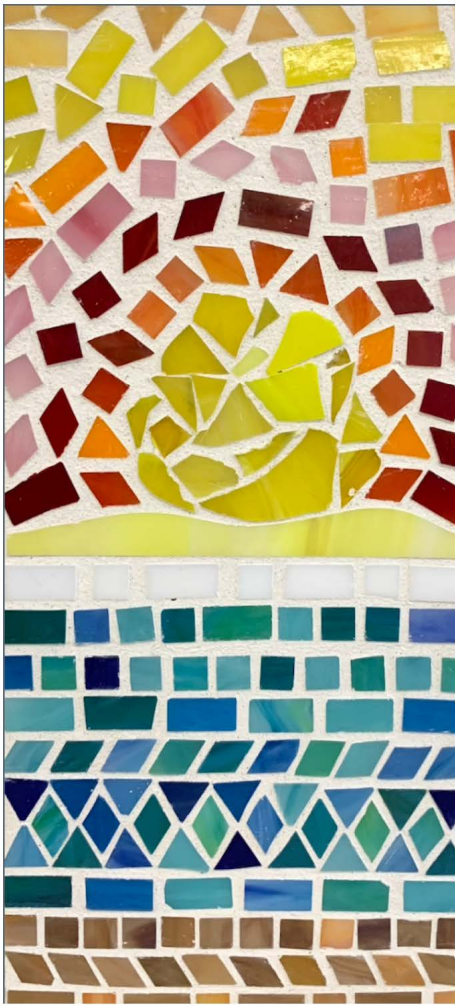
Response:

How do we hold onto the places that shape us? Childhood memories fade with time, and I wondered how I could use my art as a memento of my life in Brazil. I wanted to reminisce on my childhood in Brazil and ultimately recreate key moments from my time there. I focused on specific memories to help me remember my former life while still cherishing memories made in America. Each piece reflects a moment suspended in time through layered textures and vibrant colors, which made me question if my art can truly capture the feeling of home or is it just a shadow of what's already been lost?

Describe ways your sustained investigation developed through practice, experimentation, and revision.

Response:

At the start of my sustained investigation, I began creating art that represented my home in Brazil, which is my strongest memory, images 1-3. Not wanting to forget my grandparents and relatives left behind, I memorialize them in images 4-5. Some childhood memories are very faint, yet are extremely important to me in who I am today; my spiritual life image 6, childhood clothing images 13-14, and memories of carnival images 11-12. Images 8-9 convey the merging of two cultures. I concluded my investigation with an image of me that conveys both cultures that made me who I am today, image 15.



## Image 1

Sustained Investigation

Height: 14

Width: 8

Depth: 0

Materials:

Pressboard, grout, stain glass pieces,  
misc. tiles

Process(es):

The design was on the patio of my home  
in Brazil and provides strong memories  
of my childhood home.

Use of Digital Tool(s): No

## Remembering the street that I lived on in Brazil.



Overlay my  
photos to  
enhance  
the 3D look  
of the art.

1. Bouganvillas hanging from the tops of buildings.
2. Brazilian flags on the homes.
3. Colors of Brazil including the blue sky.
4. Stone paver roads.



## Image 2

Sustained Investigation

Height: 10

Width: 14

Depth: 0

Materials:

Canvas, acrylic paint, broken tiles, photos I took for overlays, Ribbet photo editor.

Process(es):

Nostalgic reflection of my hometown in Brazil. Items 2 evoke lively spirit & charm of home in Brazil

Use of Digital Tool(s): Yes

Digital Tool(s) used: Ribbet photo editor



## Image 3

Sustained Investigation

Height: 14

Width: 14

Depth: 0

Materials:

Canvas, silk flowers, acrylic paint, glue, broken tile, Ribbet photos to overlay

Process(es):

I added a blend of nature and culture that shaped my childhood memories of my home/Street in Brazil.

Use of Digital Tool(s): Yes

Digital Tool(s) used:

Ribbet.com photo editor



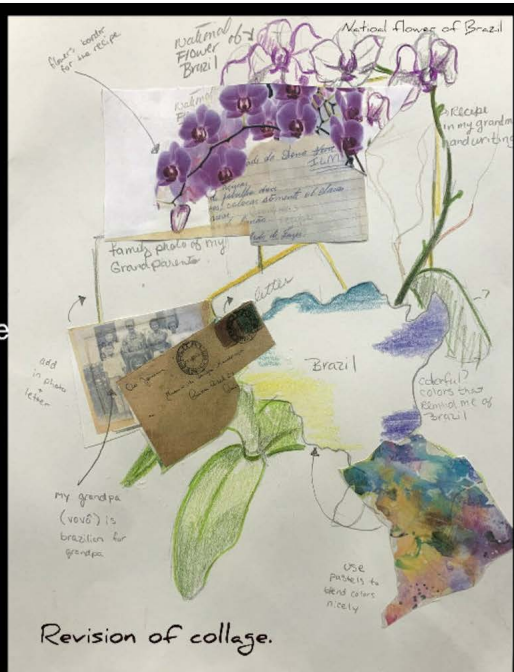
## Revision of Collage

1. Pastel national flower.
2. Watercolor vibrant colors over Brazil's continent to rep. vibrant culture.
3. Family photo of grandparents in Brazil.

Revise collage because the 1st one looks like a social studies project.



↑ 1st attempt to collage family mementos.



↑ New Composition

## Image 4

Sustained Investigation

Height: 12

Width: 18

Depth: 0

Materials:

Family mementos from Brazil, pastels, paper glue, pastels, and watercolor paint.

Process(es):

1st try looked like a S.S. project. New circular composition & added pastel for amore artistic look.

Use of Digital Tool(s): Yes

Digital Tool(s) used: Canva for collage



## Image 5

Sustained Investigation

Height: 18

Width: 12

Depth: 0

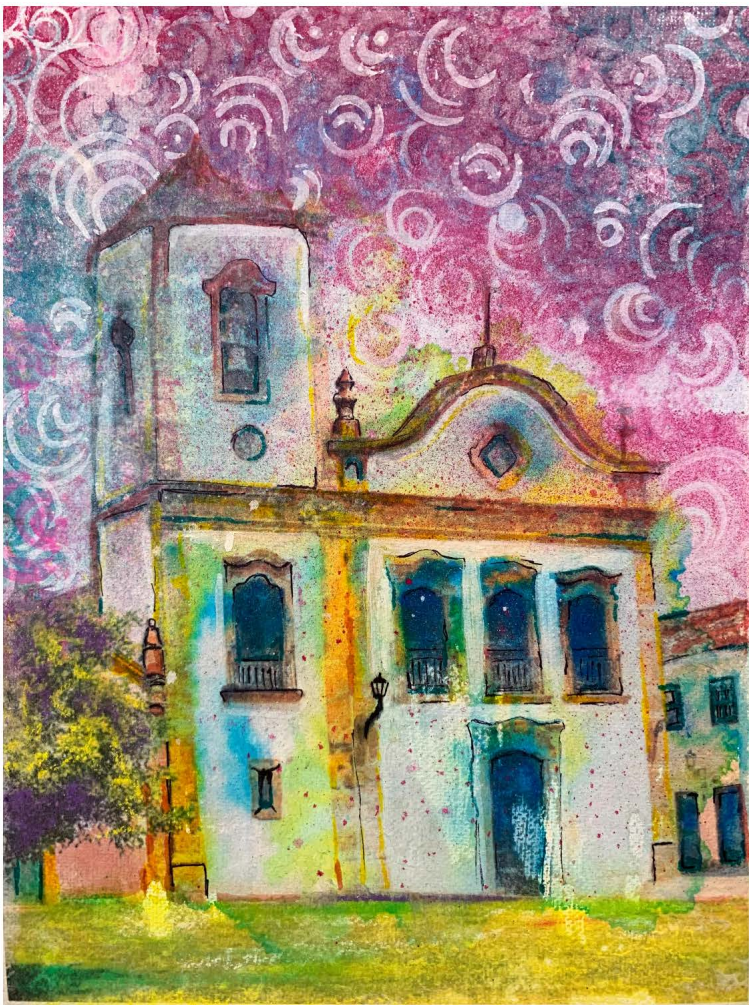
Materials:

Mementos from home/Brazil, pastel

Process(es):

Composed family items surrounded by BR national flower in pastel. Colors in BR 4 rich culture.

Use of Digital Tool(s): No



## Image 6

Sustained Investigation

Height: 20

Width: 16

Depth: 0

Materials:

acrylic paint, spray paint, stencils,  
canvas, watercolor, paint markers.

Process(es):

Home church in Brazil. Vibrant colors &  
swirling patterns to express spirituality &  
sense of wonder.

Use of Digital Tool(s): No





## Image 7

Sustained Investigation

Height: 18

Width: 12

Depth: 0

Materials:

Real money from Brazil, acrylic paint, glue, poster board

Process(es):

Used \$ to express the reason why we left Brazil to come to US. Shuffled image to convey uncertainty.

Use of Digital Tool(s): Yes

Digital Tool(s) used: Ribbet photo editor

Experiment overlaying my painting over a family flag to show the merging of 2 cultures.



Family photo from Brazil

1. Paint flay using tempera.
2. Make the flag impressionistic to give texture and emphasis when overlaying the images.



## Image 8

Sustained Investigation

Height: 12

Width: 18

Depth: 0

Materials:

Family photo, Tempera paint, paper,

Ribber photo editor

Process(es):

Painted US flag w/ movement/texture to overlay family photo to show merging of two cultures.

Use of Digital Tool(s): Yes

Digital Tool(s) used:

Ribbet photo editor to overly & fade images.



## Image 9

Sustained Investigation

Height: 9

Width: 20

Depth: 0

Materials:

Family photo, paper, acrylic paint, Ribbet  
Photo Editor to overlay images

Process(es):

Painted abstract US flag to overlay over  
family photo & faded to show the  
merging of two cultures.

Use of Digital Tool(s): Yes

Digital Tool(s) used: Ribbet photo editor



## Image 10

Sustained Investigation

Height: 12

Width: 18

Depth: 0

Materials: iPhone

Process(es):

Captured me on a beach in Brazil to show the pride I have in being Brazilian.  
Filter 4 beam of lite.

Use of Digital Tool(s): Yes

Digital Tool(s) used: Ribbet photo editor



## Image 11

### Sustained Investigation

Height: 12

Width: 18

Depth: 0

#### Materials:

Oil pastels, pencil, photoshop, my photo of dress from carnival in Brazil.

#### Process(es):

Cropped/removed bkgr. Place over drawing, fade. Colors of Brazil. Swing of dress movement/passion.

Use of Digital Tool(s): Yes

Digital Tool(s) used: Photoshop



Revise drawing by experimenting with color enhancement. Possibly draw arm in this piece using Procreate.

Over lay photo over oil pastel drawing to enhance the ruffles.



Remove Background using photoshop.





## Image 12

Sustained Investigation

Height: 18

Width: 12

Depth: 0

Materials:

Photoshop, original photo of pastel drawing, photo I took at a carnival in Brazil.

Process(es):

Cropped/removed bkgr. dress photo then overlaid & faded it over my drawing. Paper filter 4 texture.

Use of Digital Tool(s): Yes

Digital Tool(s) used:

photoshop, Paper filter for texture



## Image 13

Sustained Investigation

Height: 12

Width: 18

Depth: 0

Materials:

Ribbet editor for a collage of photos,  
 photoshop

Process(es):

Revised 1st attempt 4 better  
 composition of me as a child over my  
 adult dancer drawing. Child dreams

Use of Digital Tool(s): Yes

Digital Tool(s) used: Canva for collage



## Image 14

Sustained Investigation

Height: 18

Width: 12

Depth: 0

Materials:

Acrylic paint, paper, Ribber photo editor.  
oil pastels.

Process(es):

Painted me as a child. Flipped dancer  
photo. Overlaid images, faded,  
enhanced areas of color.

Use of Digital Tool(s): No





## Image 15

Sustained Investigation

Height: 14

Width: 14

Depth: 0

Materials:

Photo of me now, Ribbet photo editor.

Process(es):

Overlaid flowers I painted from #5.

Digitally painted background. typed favorite poem about Brazil.

Use of Digital Tool(s): Yes

Digital Tool(s) used: Ribbet photo editor.

## Analytic Scoring Rubric Row D: 2-D Art and Design Skills

1	2	3
Visual evidence of <b>rudimentary and moderate</b> 2-D skills.	Visual evidence of <b>moderate and good</b> 2-D skills.	Visual evidence of <b>good and advanced</b> 2-D skills.

### Score Rationale

This sustained investigation earns a score of 2 because the visual evidence reflects a range of moderate to good 2-D skills. In Images 1 and 3, tile and glass pieces are used to recreate childhood memories from Brazil. Image 1 applies warm and cool colors to express emotional connection, but the limited value contrast weakens the clarity of the design. In Image 3, an effort to use linear perspective is visible, but the compressed scale between the garden and building flattens the composition and affects spatial depth. Both works show moderate command of proportion and layout.

In Images 5–7, 9, 10, and 14, the artist shows greater proficiency with 2-D design by using layering, color, and photo editing to manipulate surface and space. Despite occasional image blur from digital processing, figure-ground relationships remain intact, and compositional structure is generally balanced. The use of repeated shapes, controlled space, and contrast supports more effective communication of the inquiry.

Images 12 and 15 demonstrate moments of advanced skill through layered textures, transparency, juxtaposition, and visual rhythm. However, across the full body of work, the preponderance of evidence supports a score of 2, with most images demonstrating moderate to good control of 2-D design elements.

**Summary:** This portfolio earns a score of 2 because the visual evidence consistently demonstrates moderate to good 2-D skills. While select works show moments of advanced application, compositional clarity, proportion, and spatial control are applied with varying success across the portfolio.



Image 3



Image 15

Sustained Investigation Score: Row A: Score: 2 • Row B: Score: 2 • Row C: Score: 2 • **Row D: Score: 2**