



2025 AP[®] 2-D Art and Design

Sustained Investigation

Analytic Scoring Rubric and Score Rationale

Row B—Score 1

Written Evidence

Sustained Investigation

Identify the inquiry that guided your sustained investigation.

Response:

I just wanted to do art to show how I connect to nature with my emotions, happy, angry or just any type of emotion but mostly happy. Nature really helped me put myself together when I was going through my worst times, going on walks just to see the beautiful flowers, going out to have picnics with my friends or just seeing the beauty of nature on the outside. Just showing my emotions in my artwork with nature really makes me feel some type of way and i hope people get to understand the emotions through some artwork

Describe ways your sustained investigation developed through practice, experimentation, and revision.

Response:

At first, I was really not sure what was going to be my SI but as I practice and explored with different materials, I noticed that in my artwork I focused a lot on painting, drawing lots of nature stuff like flowers, animals, or just anything that had to do with nature. I ended up questioning myself why did i do a lot of nature stuff just to realized that was my way to express myself in artwork, using bright colors to show happiness, dark colors to show sadness/ anger. It was really just my way to express myself so people could feel it through my art



Image 1

Sustained Investigation

Height: 12

Width: 10

Depth: 0

Materials: n/a

Process(es): N/A

Use of Digital Tool(s): No



Image 2

Sustained Investigation

Height: 19

Width: 13

Depth: 0

Materials: N/A

Process(es): N/A

Use of Digital Tool(s): No



Image 3

Sustained Investigation

Height: 10

Width: 12

Depth: 0

Materials: N/A

Process(es): N/A

Use of Digital Tool(s): No



Image 4

Sustained Investigation

Height: 8

Width: 6

Depth: 0

Materials: N/A

Process(es): N/A

Use of Digital Tool(s): No



Image 5

Sustained Investigation

Height: 10

Width: 8

Depth: 0

Materials: N/A

Process(es): N/A

Use of Digital Tool(s): No



Image 6

Sustained Investigation

Height: 10

Width: 12

Depth: 0

Materials: N/A

Process(es): N/A

Use of Digital Tool(s): No

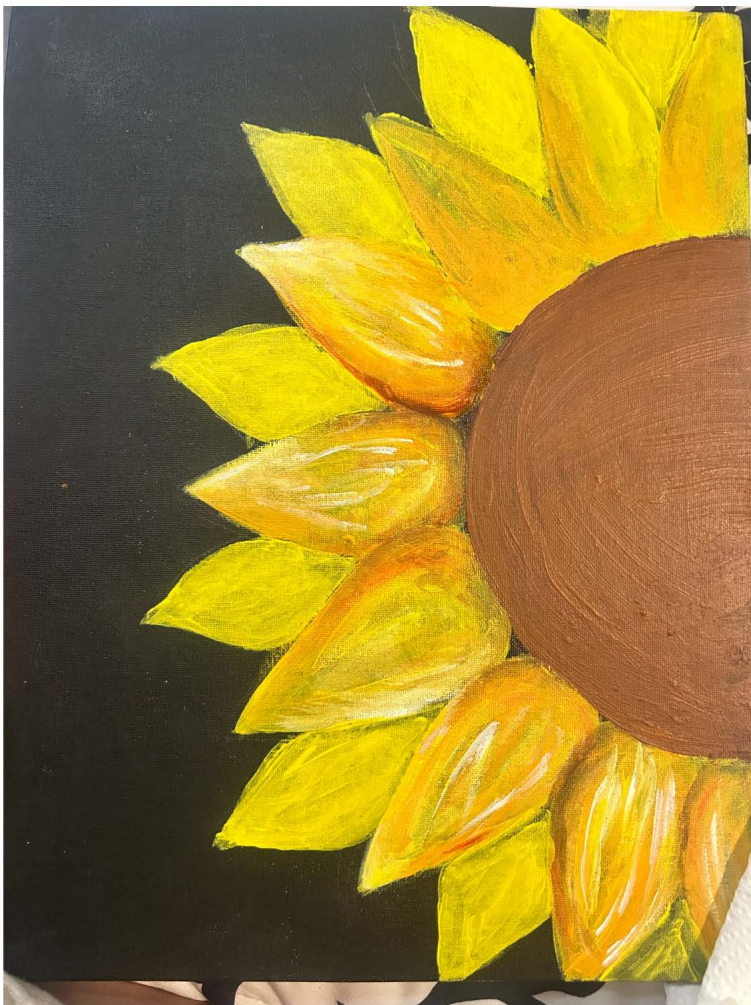


Image 7

Sustained Investigation

Height: 14

Width: 11

Depth: 0

Materials: N/A

Process(es): N/A

Use of Digital Tool(s): No

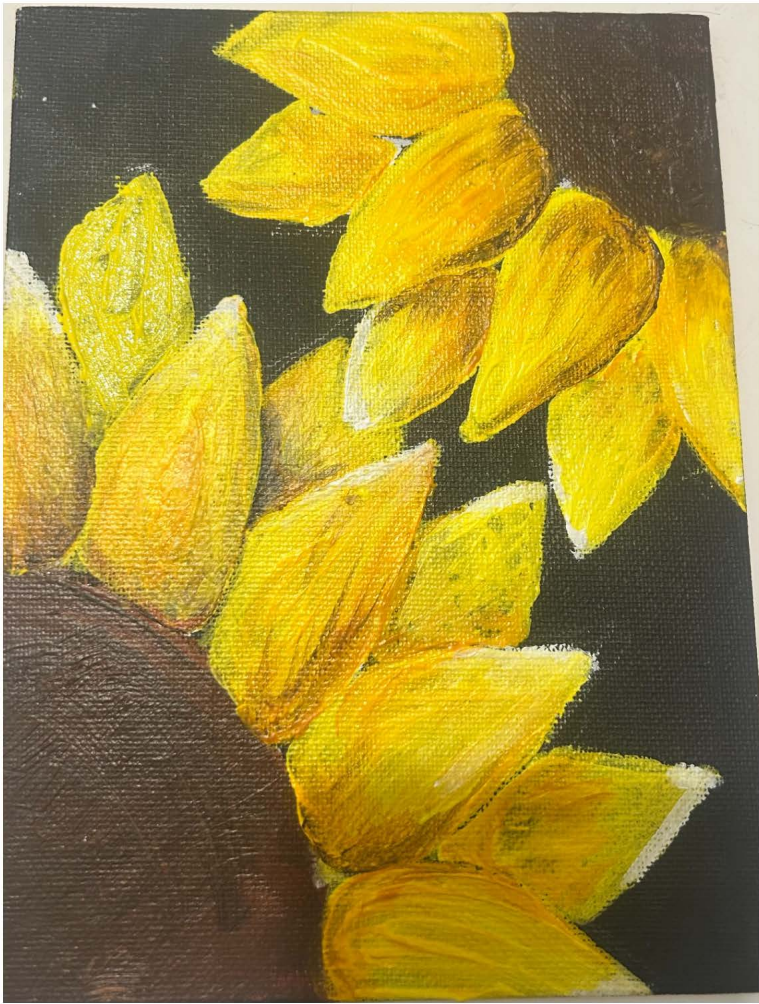


Image 8

Sustained Investigation

Height: 8

Width: 6

Depth: 0

Materials: N/A

Process(es): N/A

Use of Digital Tool(s): No



Image 9

Sustained Investigation

Height: 10

Width: 10

Depth: 0

Materials: N/A

Process(es): N/A

Use of Digital Tool(s): No



Image 10

Sustained Investigation

Height: 10

Width: 12

Depth: 0

Materials: N/A

Process(es): N/A

Use of Digital Tool(s): No



Image 11

Sustained Investigation

Height: 12

Width: 10

Depth: 0

Materials: color pencils

Process(es):

i drew some tulips because they are one
of my favorite flowers

Use of Digital Tool(s): No

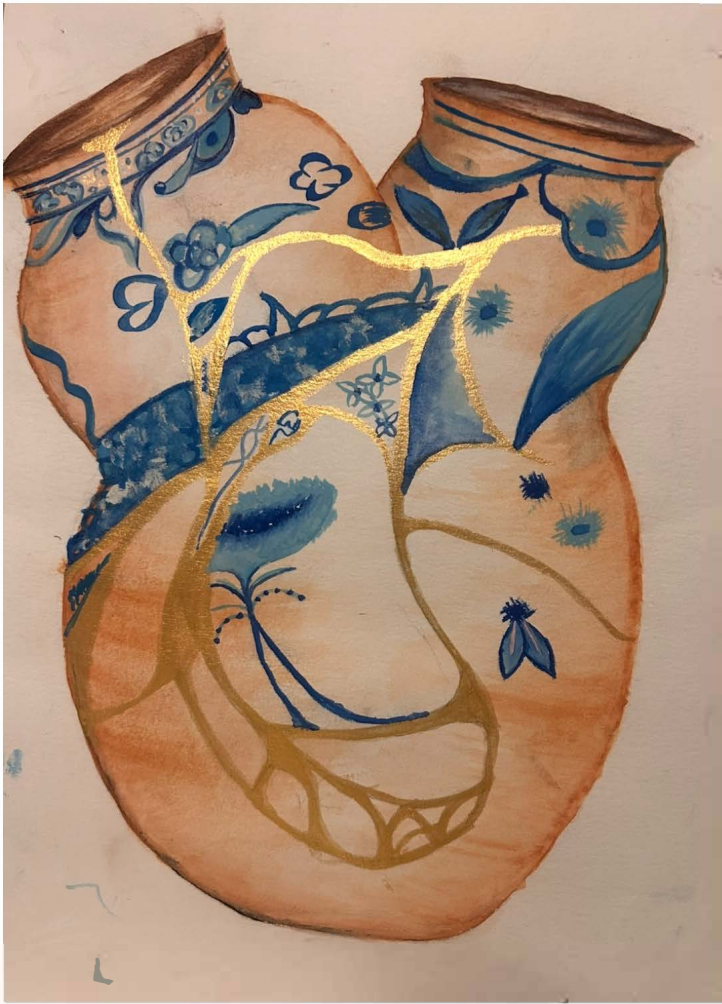


Image 12

Sustained Investigation

Height: 19

Width: 13

Depth: 0

Materials: pencil , water colors

Process(es):

i did this because i was inspired by the
artist Yeesookyung

Use of Digital Tool(s): No



Image 13

Sustained Investigation

Height: 10

Width: 8

Depth: 0

Materials: pencil , acrylic

Process(es):

i painted the background black then i
sketched my flower and painted it

Use of Digital Tool(s): No

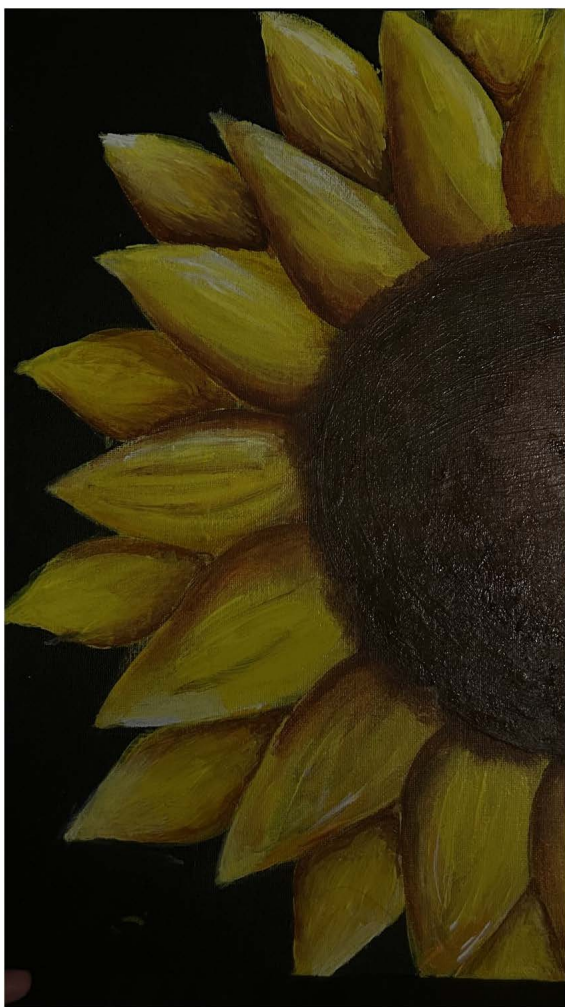


Image 14

Sustained Investigation

Height: 14

Width: 11

Depth: 0

Materials: pencil , acrylic

Process(es):

i painted the background black then i
sketched the flower and started painting
it by layers

Use of Digital Tool(s): No



Image 15

Sustained Investigation

Height: 12

Width: 10

Depth: 0

Materials: color pencils

Process(es):

i got this idea from my paintings that i decided to do them with color pencils with more details

Use of Digital Tool(s): No

Analytic Scoring Rubric Row B: Practice, Experimentation, and Revision

Writing Prompt 2: *Describe ways your sustained investigation developed practice, experimentation, and revision.*

1	2	3
Visual evidence of practice, experimentation, and revision does not relate to a sustained investigation.	Visual and written evidence of practice, experimentation, and revision relates to a sustained investigation.	Visual evidence of practice, experimentation, and revision demonstrates development of the sustained investigation. AND Written evidence describes ways the sustained investigation developed through practice, experimentation, and revision.

Score Rationale

This portfolio earns a score of 1 because the visual evidence of practice, experimentation, and revision does not clearly relate to a sustained investigation. While some images such as 2, 7, 8, 12, 14, and 15 show visual changes or repeated subject matter, the written evidence does not explain how these developments connect to an inquiry. The response to writing prompt 2 states the artist “practiced and explored with different materials,” but does not mention experimentation or revision. For example, Image 12 appears to be a revision of Image 2, but the written evidence only states, “I did this because I was inspired by the artist Yeesookyung,” without connecting the process to any ongoing investigation. Overall, the written and visual evidence lack explanation of how the work developed in response to practice, experimentation, or revision within the context of a sustained investigation.

Summary: This portfolio earns a score of 1 because the written evidence does not describe how practice, experimentation, or revision contributed to the development of a sustained investigation. While some visual changes are present, they are not explained or connected to the inquiry in the written response.



Image 2



Image 12

Sustained Investigation Score: • Row A: Score: 1 • **Row B: Score: 1** • Row C: Score: 1 • Row D: Score: 1