



2025 AP[®] 2-D Art and Design

Sustained Investigation

Analytic Scoring Rubric and Score Rationale

Row A–Score 3

Written Evidence

Sustained Investigation

Identify the inquiry that guided your sustained investigation.

Response:

Growing up in Pakistan, I was surrounded by tradition in everyday moments (rugs under my feet, gold thread in my mom's shawls). Over time, I realized that small moments live in quiet, personal details like braids, bangles, and fabrics. These objects hold emotions and memories often overlooked. Through photography, drawing, and digital layering, I asked: How have these moments shaped how I see life around me? My work became a reflection on identity not just through symbols, but through what feels most real to me.

Describe ways your sustained investigation developed through practice, experimentation, and revision.

Response:

I began with Pieces 1–4 by experimenting with family photos and simple everyday moments to explore memory. In Pieces 5–7, I scanned textures, layering them with stitched text and drawing to highlight overlooked textiles. Pieces 8 and 9 became denser and more chaotic like collages of bangles, food, and print media reflecting my thought process. By Pieces 10–15, I blended figures and fragmented spaces, using digital layering and repetition to reflect how I imagine life and identity.

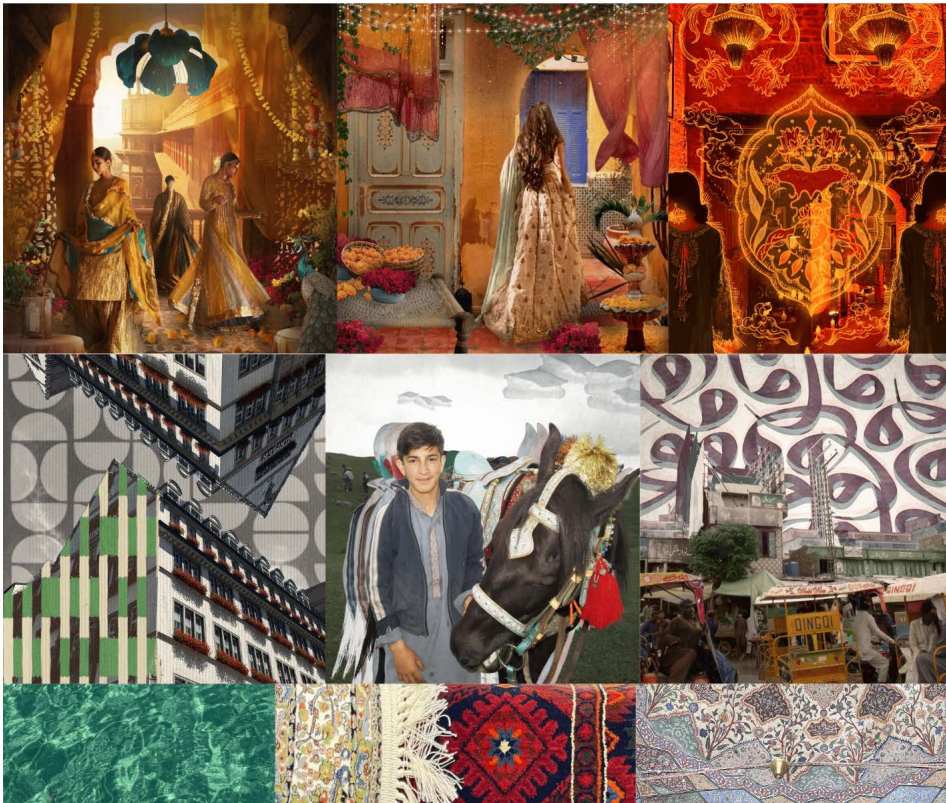


Image 1

Sustained Investigation

Height: N/A

Width: N/A

Materials:

DSLR Camera, Canon Digital Camera

Process(es):

My initial thought process as I began noticing life around me (heritage, everyday life)

Use of Digital Tool(s): Yes

Digital Tool(s) used:

Photoshop, Procreate



Image 2

Sustained Investigation

Height: 18

Width: 12

Materials:

Vintage photo of my grandmother

Process(es):

Sketch scanned, refined in Photoshop,
motifs and frame added in Procreate

Use of Digital Tool(s): Yes

Digital Tool(s) used:

Photoshop, Procreate



Image 3

Sustained Investigation

Height: 16

Width: 24

Materials: DSLR Camera

Process(es):

DSLR Photo, edited on laptop and iPad
using Photoshop, Illustrator, accents
drawn on Procreate

Use of Digital Tool(s): Yes

Digital Tool(s) used:

Photoshop, Procreate, Illustrator



Image 4

Sustained Investigation

Height: 12

Width: 12

Materials:

Canon DSLR Camera, grunge brushes

Process(es):

Digital photo edited with texture overlays, lily and texture added in Procreate, color toned

Use of Digital Tool(s): Yes

Digital Tool(s) used:

Photoshop, Procreate



Image 5

Sustained Investigation

Height: 16

Width: 16

Materials: DSLR Camera

Process(es):

Edited DSLR Photo in Photoshop,
added shapes with textiles

Use of Digital Tool(s): Yes

Digital Tool(s) used: Photoshop



Image 6

Sustained Investigation

Height: 16

Width: 16

Materials: Canon DSLR Camera

Process(es):

Edited DSLR Photo in Photoshop, water
shot mirrored, textile layers overlaid,
tones refined

Use of Digital Tool(s): Yes

Digital Tool(s) used: Photoshop



Image 7

Sustained Investigation

Height: 16

Width: 16

Materials:

DSLR Camera, digital elements

Process(es):

DSLR photo was color-graded, tile framed in Photoshop, elements were added in Procreate

Use of Digital Tool(s): Yes

Digital Tool(s) used:

Photoshop, Procreate



Image 8

Sustained Investigation

Height: 18

Width: 12

Materials: Scanned vintage graphics

Process(es):

Retro graphics arranged in Photoshop,
hues balanced, doodle accents drawn in
Procreate

Use of Digital Tool(s): Yes

Digital Tool(s) used:

Photoshop. Procreate, Illustrator



Image 9

Sustained Investigation

Height: 18

Width: 12

Materials:

Canon DSLR Camera, scanned and
digital elements

Process(es):

Photos were collaged in Photoshop,
floral overlays added, accents drawn in
Procreate

Use of Digital Tool(s): Yes

Digital Tool(s) used:

Photoshop, Procreate, Illustrator



Image 10

Sustained Investigation

Height: 16

Width: 16

Materials: DSLR Camera

Process(es):

Painted over photo in Procreate, layered colors, added market glow textures

Use of Digital Tool(s): Yes

Digital Tool(s) used:

Procreate, Photoshop



Image 11

Sustained Investigation

Height: 18

Width: 18

Materials: DSLR Camera

Process(es):

Photo edited in Photoshop, wall text added in Illustrator, fabric motifs brushed in Procreate

Use of Digital Tool(s): Yes

Digital Tool(s) used:

Procreate, Photoshop, Illustrator



Image 12

Sustained Investigation

Height: 16

Width: 12

Materials: DSLR Camera

Process(es):

Photo edited in Photoshop, fabrics
blended, sketch lines and shading
added in Procreate

Use of Digital Tool(s): Yes

Digital Tool(s) used:

Photoshop, Procreate



Image 13

Sustained Investigation

Height: 18

Width: 12

Materials:

DSLR Camera, digital textile patterns

Process(es):

Portrait edited in Photoshop, mandala textures layered, highlights added in Procreate

Use of Digital Tool(s): Yes

Digital Tool(s) used:

Photoshop, Procreate

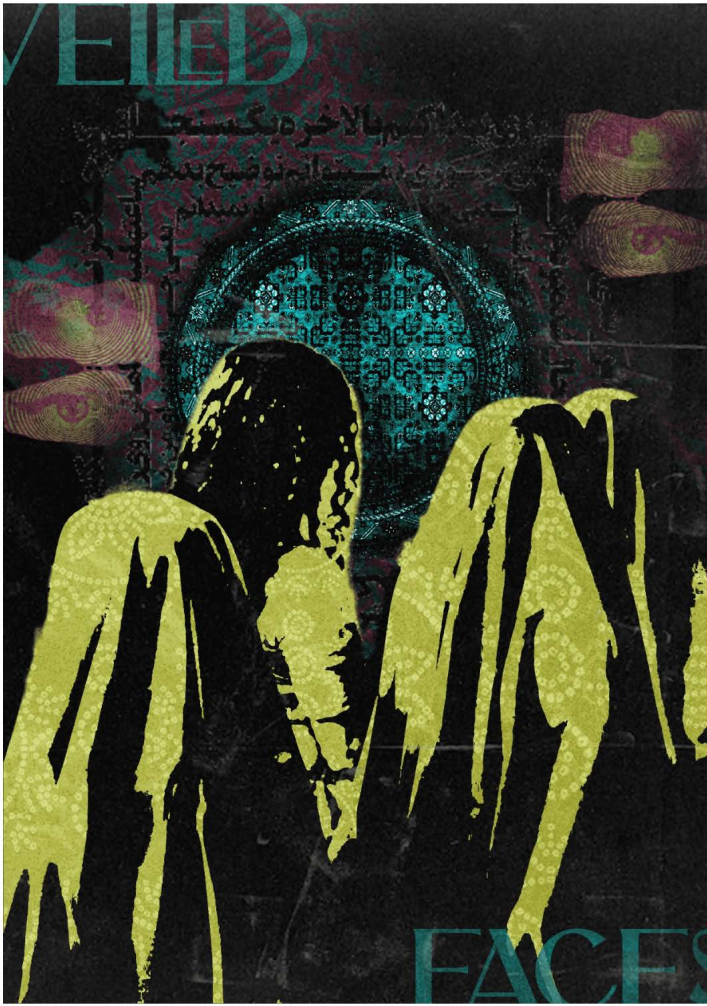


Image 14

Sustained Investigation

Height: 18

Width: 12

Materials: DSLR Camera

Process(es):

DSLR shot posterized, neon text in
Illustrator, grunge and halftone brushes
in Procreate

Use of Digital Tool(s): Yes

Digital Tool(s) used:

Photoshop, Procreate, Illustrator



Image 15

Sustained Investigation

Height: 16

Width: 16

Materials: DSLR Camera

Process(es):

Photo edited in Photoshop, script overlay in Illustrator, red stroke painted in Procreate

Use of Digital Tool(s): Yes

Digital Tool(s) used:

Procreate, Photoshop, Illustrator

Analytic Scoring Rubric Row A: Inquiry

Writing Prompt 1: *Identify the inquiry that guided your sustained investigation.*

1	2	3
Written evidence does not identify an inquiry.	Written evidence identifies an inquiry AND Visual evidence demonstrates the inquiry.	Written evidence identifies an inquiry. AND Visual evidence demonstrates the inquiry. AND The inquiry guides the development of the sustained investigation.

Score Rationale

This portfolio earns a score of 3 because the written evidence identifies an inquiry, “How have these moments shaped how I see life around me?” and the visual evidence clearly demonstrates and develops that inquiry. The response explains that the work is “a reflection on identity not just through symbols, but through what feels most real,” introducing how observation and memory inform the investigation. Throughout the body of work, everyday cultural references—such as rugs, shawls, braids, bangles, and fabrics—are intentionally integrated into compositions, as seen in Images 3, 5, 11, and 13. More importantly, the inquiry guides the development of the sustained investigation: early images explore surface-level motifs and familiar textiles (Images 2, 3, 5), while later works (Images 11–15) deepen into complex compositions with layered references, blended environments, and symbolic integration of calligraphy, fabric, and architectural form. This progression reflects sustained questioning and discovery shaped by the inquiry.

Summary: This portfolio earns a score of 3 because the written evidence identifies an inquiry, the visual evidence demonstrates it, and the inquiry clearly guides the development of the sustained investigation. The body of work shows intentional progression from personal observation to layered, symbolic exploration.



Image 5



Image 11

Sustained Investigation Score: • **Row A: Score: 3** • Row B: Score 3 • Row C: Score: 3 • Row D: Score: 3