



2025 AP[®] 2-D Art and Design

Sustained Investigation

Analytic Scoring Rubric and Score Rationale

Row A–Score 2

Written Evidence

Sustained Investigation

Identify the inquiry that guided your sustained investigation.

Response:

How have words made me? Words are an art in themselves. They can be manipulated to tell intricate stories and paint beautiful images(4, 10, & 11). I have fallen in love with the creativity and imagination that goes behind each word and want my art to reflect that(10 & 15). I have also considered how the words around me have built who I am today(8 & 13). I also wanted my art to show some of the most important words and ideas to me as I have grown up(6 & 13). I played with ideas such as how labels, self talk, stories, and imagination change us and the world around us, whether for good or bad.

Describe ways your sustained investigation developed through practice, experimentation, and revision.

Response:

Throughout my sustained investigation, I experimented with a lot of mediums that I have not used before. I have made small things with glass, but with work 4 I tried making a full window. I have not had much experience painting so I tried to do some different styles of painting(works 6, 11, & 13). With work 13 I played with focal points and movement by making the eyes and hair stand out so that viewers would look at the face and then move across the piece. I experimented with shadows and layering in work 8 to create a face. With work 15 I tried using more abstract shapes to portray an idea.

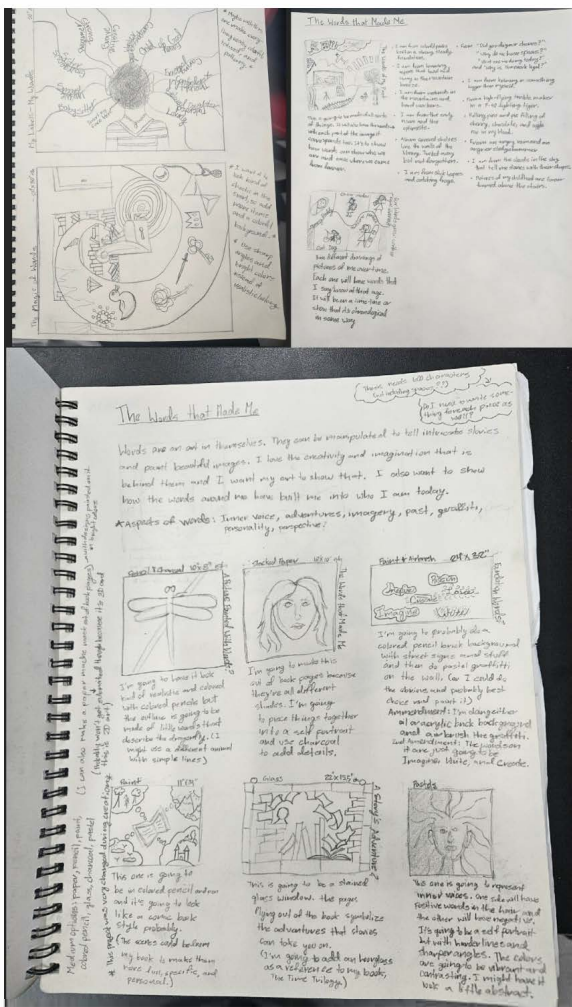


Image 1

Sustained Investigation

Height: NA

Width: NA

Materials:

Graphite pencil, on sketch paper

Process(es):

Sketched thumbnails of possible pieces
and wrote the ideas behind each piece

Use of Digital Tool(s): No

Sustained Investigation

Width: NA

Graphite pencil, on sketch paper

I used these drawings to nail down the design and measurements for piece 4.

Use of Digital Tool(s): No

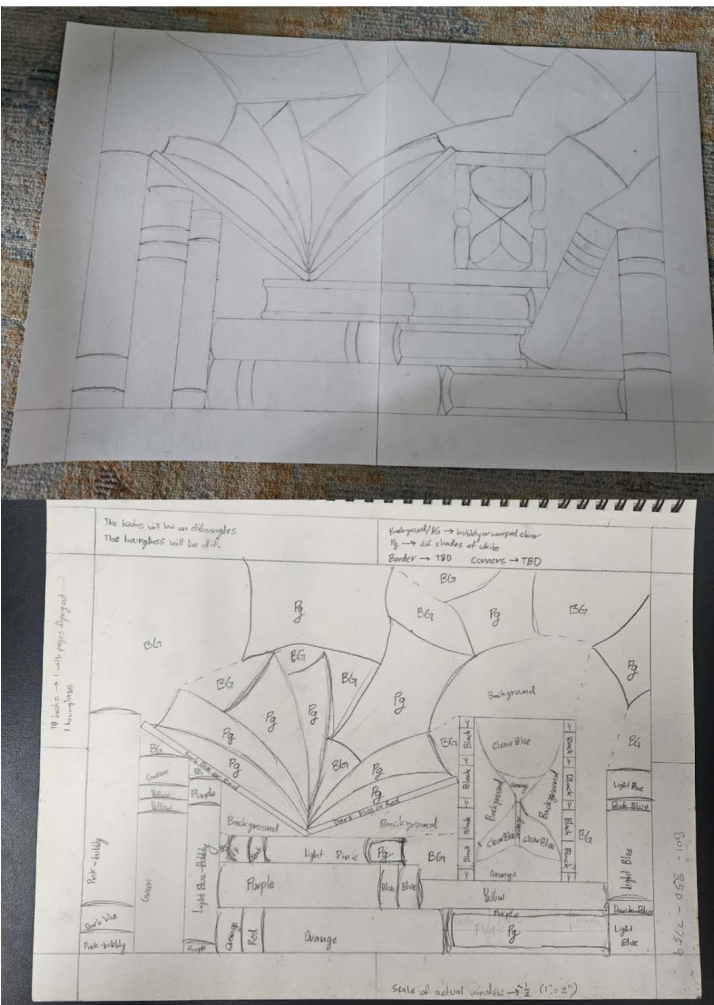




Image 3

Sustained Investigation

Height: NA

Width: NA

Materials:

Stained glass, white vinyl, graphite paper, copper foil, lead solder, grinder, glass cutter

Process(es):

Process of work 4. Top left: cut. Top right: grind. Bottom left: copper foil.

Bottom right: solder.

Use of Digital Tool(s): No



Image 4

Sustained Investigation

Height: 15.5

Width: 21.8

Materials:

Stained glass, copper foil, lead solder, medal D rings, black patina, and metal channels

Process(es):

Used vinyl cutouts as a guide while cutting and grinding shapes then foiled, soldered, and patinated

Use of Digital Tool(s): No



Image 5

Sustained Investigation

Height: NA

Width: NA

Materials:

Acrylic paint, air brush paint, sand, on canvas

Process(es):

Mixed sand with gray acrylic paint for cement texture and airbrushed words over the top

Use of Digital Tool(s): No



Image 6

Sustained Investigation

Height: 24

Width: 36

Materials:

Acrylic paint, air brush, sand, on canvas

Process(es):

Revision of work 5. Added the word "imagine" and used acrylic paint to add background detail

Use of Digital Tool(s): No

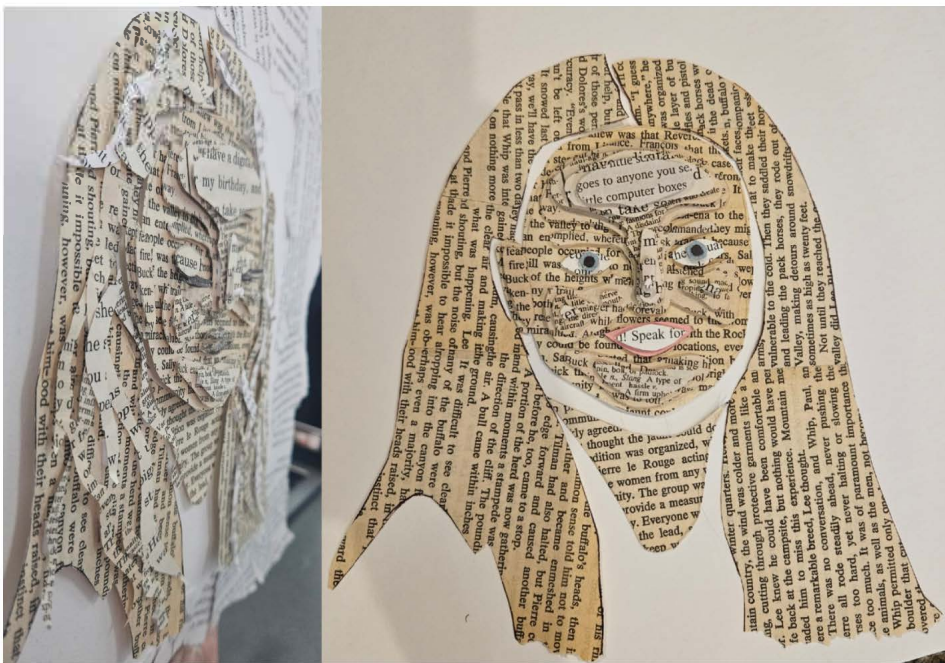


Image 7

Sustained Investigation

Height: NA

Width: NA

Materials:

Old books pages, foam core board,
Elmer's glue, double-sided tape,
scrapbook paper

Process(es):

Cut pages of old books to the shape of
my face. Layered varying shades to
create depth. 3D details

Use of Digital Tool(s): No

Citation(s):

Personal photo used as a reference

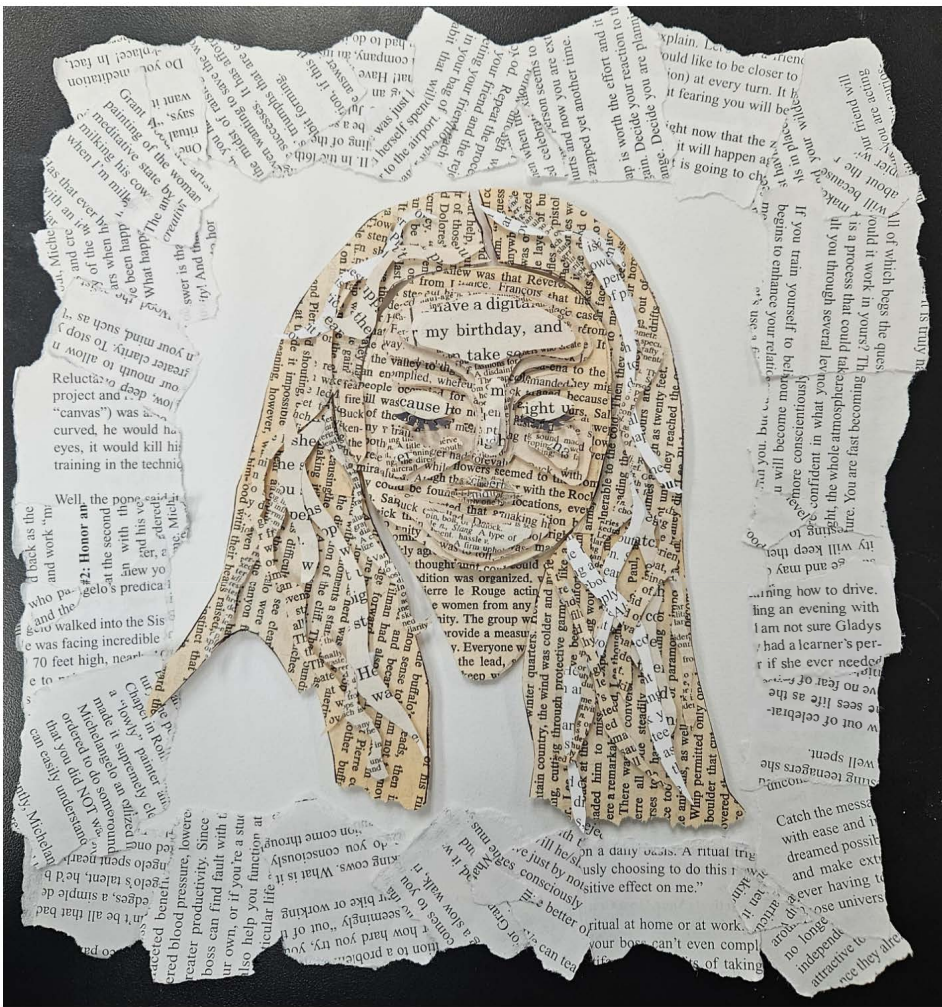


Image 8

Sustained Investigation

Height: 11

Width: 10

Depth: 0.5

Materials:

Old book pages, foam core board,
Elmer's glue, double-sided tape, on
white cardstock

Process(es):

Revision of work 7. Changed facial
features to use book pages. Added
details on hair and background.

Use of Digital Tool(s): No

Citation(s):

Personal photo used as a reference

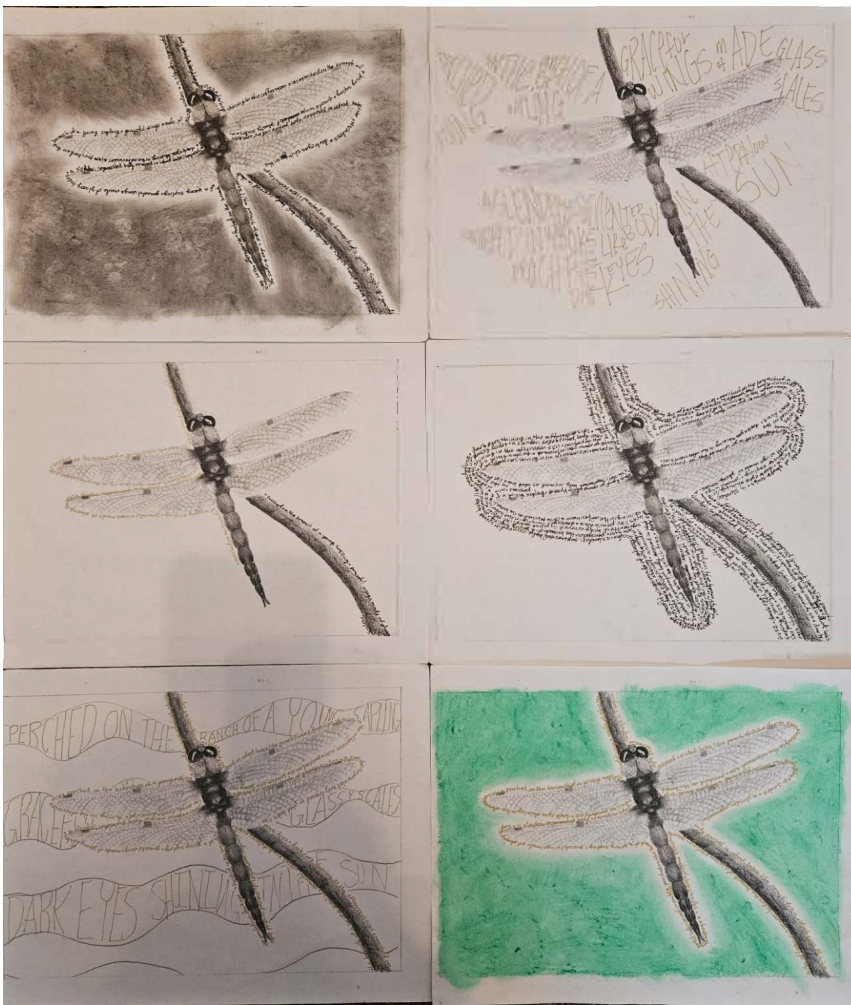


Image 9

Sustained Investigation

Height: NA

Width: NA

Materials:

Copies of original drawing, charcoal, water pastel, gel pen, fine point pen

Process(es):

Tested different backgrounds on printed copies of work 10.

Use of Digital Tool(s): No

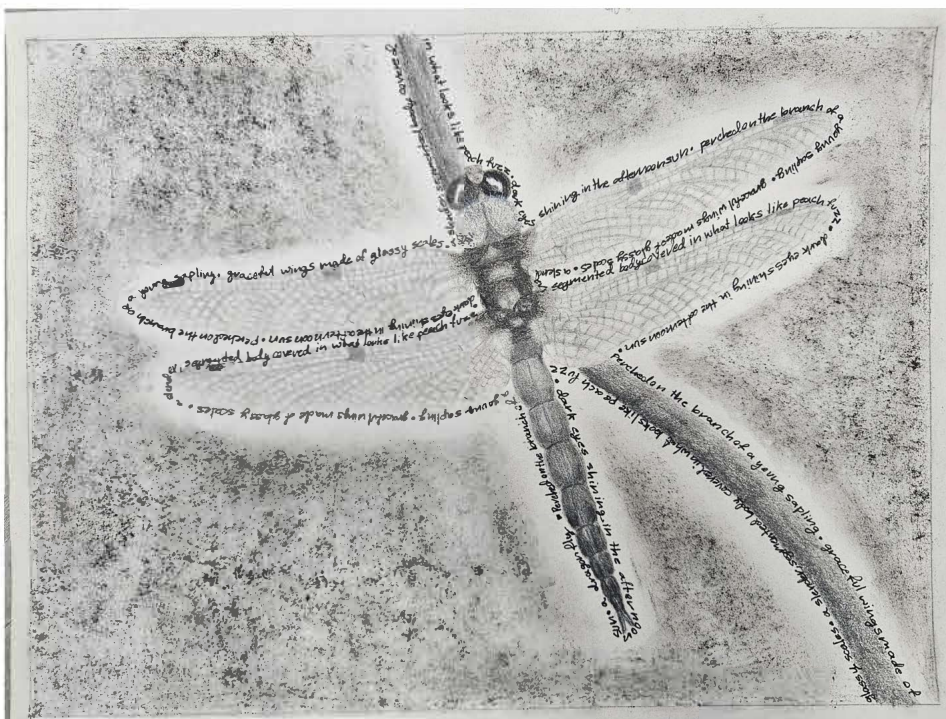


Image 10

Sustained Investigation

Height: 7

Width: 10

Materials:

Charcoal, graphite pencils, fine point pen, on sketch paper

Process(es):

Dragonfly sketched with pencil then darkened with charcoal, words in pen, charcoal background

Use of Digital Tool(s): No

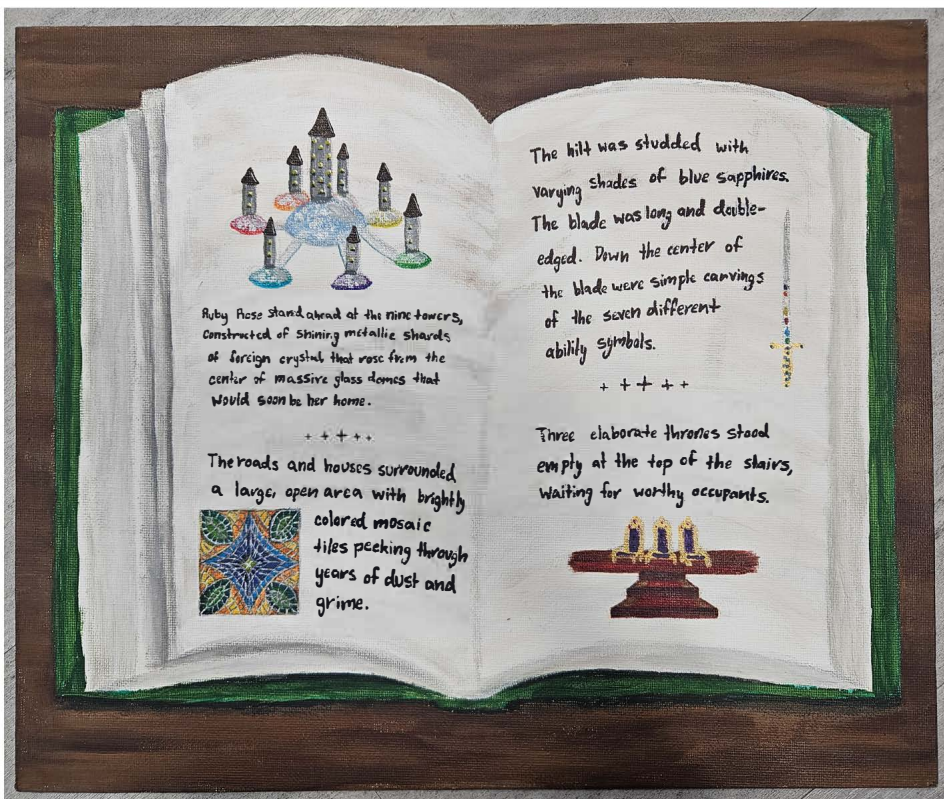


Image 11

Sustained Investigation

Height: 11

Width: 14

Materials:

Acrylic paint, alcohol markers, white gel
pen, on canvas board

Process(es):

Painted book, background, and small
pictures. Touched up with markers and
white pen. Words in marker

Use of Digital Tool(s): No



Image 12

Sustained Investigation

Height: NA

Width: NA

Materials: Acrylic paint, on canvas

Process(es):

Started by painting general shapes, filled in and detailed the hair, then painted the face

Use of Digital Tool(s): No



Image 13

Sustained Investigation

Height: 22

Width: 28

Materials:

Acrylic paint, gold leaf, metal leaf
adhesive, on canvas

Process(es):

Revision of work 12. Added gold leaf to
each section of hair to make it stand out
more.

Use of Digital Tool(s): No



Image 14

Sustained Investigation

Height: NA

Width: NA

Materials:

Cotton fabric, acrylic paint, mod podge,
on canvas

Process(es):

Process of work 15. Top left: cut and
arrange fabric. Top right: paint
background. Bottom: mod podge

Use of Digital Tool(s): No



Image 15

Sustained Investigation

Height: 36

Width: 24

Materials:

Cotton fabric, acrylic paint, mod podge,
on canvas

Process(es):

Experimented with fabric and abstract
art. Cut, arranged, and glued fabric to a
painted canvas.

Use of Digital Tool(s): No

Analytic Scoring Rubric Row A: Inquiry

Writing Prompt 1: *Identify the inquiry that guided your sustained investigation.*

1	2	3
Written evidence does not identify an inquiry.	Written evidence identifies an inquiry AND Visual evidence demonstrates the inquiry.	Written evidence identifies an inquiry. AND Visual evidence demonstrates the inquiry. AND The inquiry guides the development of the sustained investigation.

Score Rationale

This portfolio earns a score of 2 because the written evidence identifies an inquiry, “How have words made me?” and visual evidence demonstrates the inquiry, though it does not guide the development of the sustained investigation. The written statement reflects a personal interest in the transformative power of words, and works such as Images 6, 8, 11, and 13 show visual responses to that idea. For example, in Image 8, a portrait is constructed from torn pages of old books, literally using words as material to explore identity. In Image 13, “acrylic paint, gold leaf, and metal leaf adhesive” are used to highlight the idea of “important words and ideas” through the hair of a stylized figure. However, the written evidence does not present questioning that drives sustained exploration and discovery over time, and the investigation lacks clear development through materials, processes, and ideas. The visual responses relate to the inquiry, but the body of work does not fully show how the inquiry shaped its evolution.

Summary: This portfolio earns a score of 2 because the written evidence identifies an inquiry and the visual evidence demonstrates it, but the inquiry does not guide the development of the sustained investigation. While some works connect to the idea, the body of work lacks clear progression shaped by ongoing questioning.

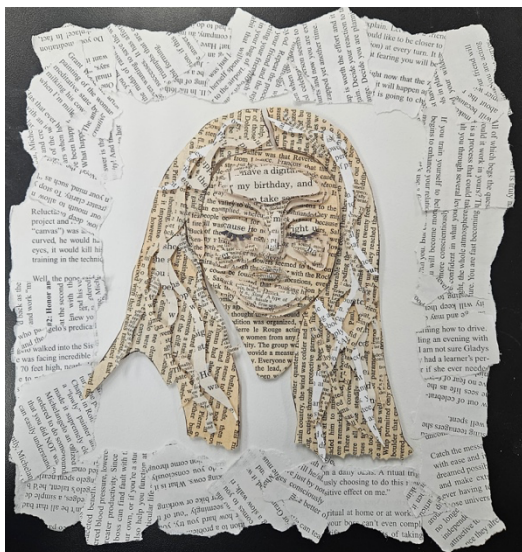


Image 8



Image 13

Sustained Investigation Score: • **Row A: Score: 2** • Row B: Score 2 • Row C: Score: 2 • Row D: Score: 2