



2025 AP[®] 2-D Art and Design

Selected Works—Score 5



Work 1

Selected Works

Height: 19

Width: 13

Idea(s):

Insomnia, sleep disorder that makes it extremely hard to sleep. Lying awake every night. No remedy.

Materials:

Street Lamp, SUV Car, Canon Rebel

Process(es):

Dad on top of his car illuminated by a street light. He suffers from insomnia and takes night drives

Use of Digital Tool(s): Yes

Digital Tool(s) used:

Photoshop and Lightroom



Work 2

Selected Works

Height: 19

Width: 13

Idea(s):

Insecurities riddle most teenagers. I wanted to represent the feeling of being on display.

Materials:

Step Stool, Night Gown, Natural Lighting, Brushed Backdrop

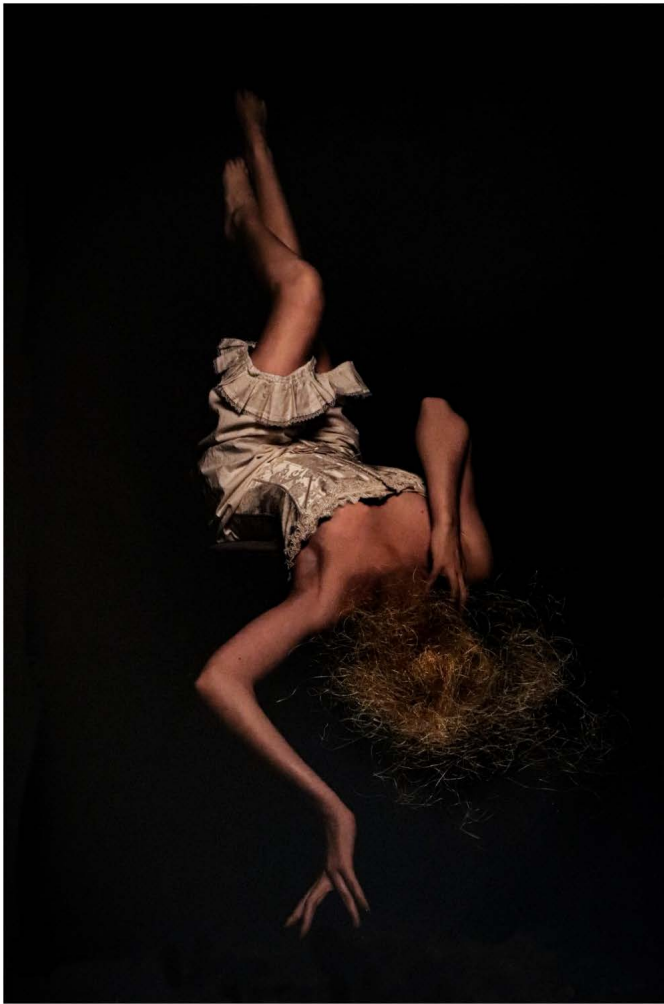
Process(es):

The model crouches hugging her legs. She is lit by the natural sunlight feeling like a spotlight.

Use of Digital Tool(s): Yes

Digital Tool(s) used:

Photoshop and Lightroom



Work 3

Selected Works

Height: 19

Width: 13

Idea(s):

The absence of a face leads to a question mark facing the viewer.
Experimenting with uncommon pairs.

Materials:

Hair, Victorian Corset and Bloomers,
Stool, Black Fabric Backdrop, Canon
Rebel

Process(es):

Position of model & Victorian clothes
pose question but face covered by hair
another layer to story

Use of Digital Tool(s): Yes

Digital Tool(s) used:

Lightroom and Photoshop



Work 4

Selected Works

Height: 19

Width: 13

Idea(s):

Effects of continuous medication for unknown issues. Medicine after medicine but no cure, temporary.

Materials:

Pill Bottles, Bald Cap, Headband, Beauty Dish Grid, Canon Rebel

Process(es):

Glue the bottles to the headband then secure it to the bald cap. Blank expression of the model.

Use of Digital Tool(s): Yes

Digital Tool(s) used:

Photoshop and Lightroom



Work 5

Selected Works

Height: 19

Width: 13

Idea(s):

Spilled the beans, a family expression meaning explain the drama. Literally beans have been spilled.

Materials:

Cans of Beans, Lace Tank Top, Hair Clips, Rebel Canon

Process(es):

Open the beans, empty the cans, secure as hair rollers, fill the cans back up and drip down model.

Use of Digital Tool(s): Yes

Digital Tool(s) used:

Photoshop and Lightroom

Scoring Criteria

Writing

Written evidence **identifies** materials, processes, and ideas.

Score Rationale

This written evidence earns a score of 5 because it clearly identifies materials, processes, and ideas. In Work 5, the idea, “Spilled the beans, a family expression meaning explain the drama,” is supported by the use of cans of beans, a lace tank top, hair clips, and a Canon Rebel camera. The process is described in detail: “Open the beans, empty the cans, secure as hair rollers, fill the cans back up and drip down model.” The materials and process are intentionally selected to visually reinforce the concept, showing a strong connection between the stated idea and the way the work is constructed.

2-D Art and Design Skills

Visual evidence of **advanced** 2-D skills.

This body of work demonstrates visual evidence of advanced 2-D skills across all Selected Works, including control of line, shape, color, value, balance, and emphasis through digital photography and editing with Adobe Photoshop and Lightroom.

In Work 2, black-and-white photography is used to highlight the model perched on a step stool, supporting the idea that “insecurities riddle most teenagers” and referencing “the feeling of being on display.” Lighting is skillfully used to create a soft S-curve from the model’s left eye to her toes, guiding the viewer’s gaze through the composition and reinforcing the emotional tone. The model’s coy expression and closed posture enhance the sense of vulnerability. A chiaroscuro effect balances maximum white on the model’s forehead, cheek, dress, and toes with maximum black in the shadows of her hair, beneath the stool, and in the background. These deliberate compositional choices reflect highly developed 2-D skills.

Materials, Processes, and Ideas

Visual relationships among materials, processes, and ideas are **evident** and **demonstrate synthesis**.

The visual relationships among materials, processes, and ideas are evident throughout the Selected Works and consistently demonstrate synthesis. In Work 4, the staged portrait explores the “effects of continuous medication for unknown issues. Medicine after medicine but no cure, temporary.” The headpiece, constructed from pill bottles attached to a bald cap and headband, features pills of various colors. This is visually and conceptually reinforced by the model’s stoic expression and frontal pose. The materials, lighting, and composition are purposefully combined to communicate the emotional and psychological

impact of ongoing medication. Across the body of work, these intentional connections between material choices, image construction, and conceptual intent reflect a high level of synthesis.

Summary

This Selected Works portfolio component earns a score of 5 because the written evidence clearly identifies materials, processes, and ideas, and the visual evidence demonstrates advanced 2-D skills. Each work shows intentional and cohesive relationships among materials, processes, and ideas, resulting in strong synthesis. Compositional choices are precise and support the conceptual goals.