



2024 AP[®] Drawing Art and Design

Sustained Investigation

Analytic Scoring Rubric and Score Rationale

Row D–Score 1

Written Evidence

Sustained Investigation

Identify the inquiry that guided your sustained investigation.

Response:

The question that guided my sustained investigation was how planes both represent a way to new experiences but also people exiting on different paths into the rest of their lives. This question led me to think about the way that planes bring us together and the excitement of it all, I have grown up much of my life traveling and it has always been an amazing gift for me. At the same time, planes have also been seen in my life as a constant symbol of loss as my dad was a pilot and flew often and for long stretches of time when me and my family did not get to see him.

Describe ways your sustained investigation developed through practice, experimentation, and revision.

Response:

My question led me to create many different examples of the complex feelings behind planes and both their negative and positive effects. I have displayed the turbulent emotions that come with getting my dad taken away from me at such a young age. While I have grown up grateful for them, I made this obvious with the bright colors but at the same time, the shapes in these colors symbolize how there was no simple feeling to planes, I shifted towards abstract to show the youthful gratitude I once didn't feel and I now have for travel as my dad is no longer in the military.

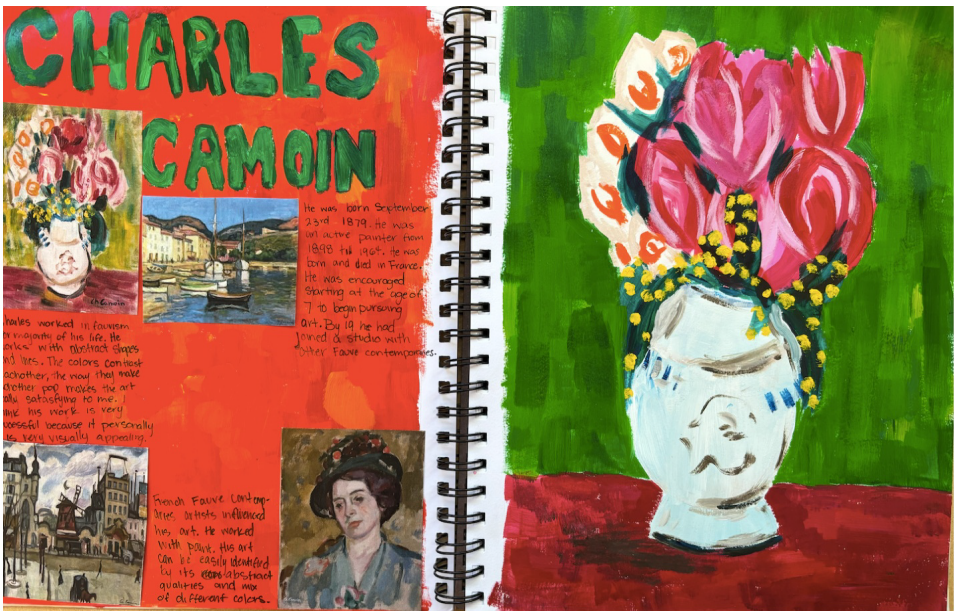


Image 1

Sustained Investigation

Height: 10

Width: 18

Depth: 0

Materials: Acrylic paint and black pen

Process(es):
 Created a bright color scheme to represent the artist and her creations which I recreated.

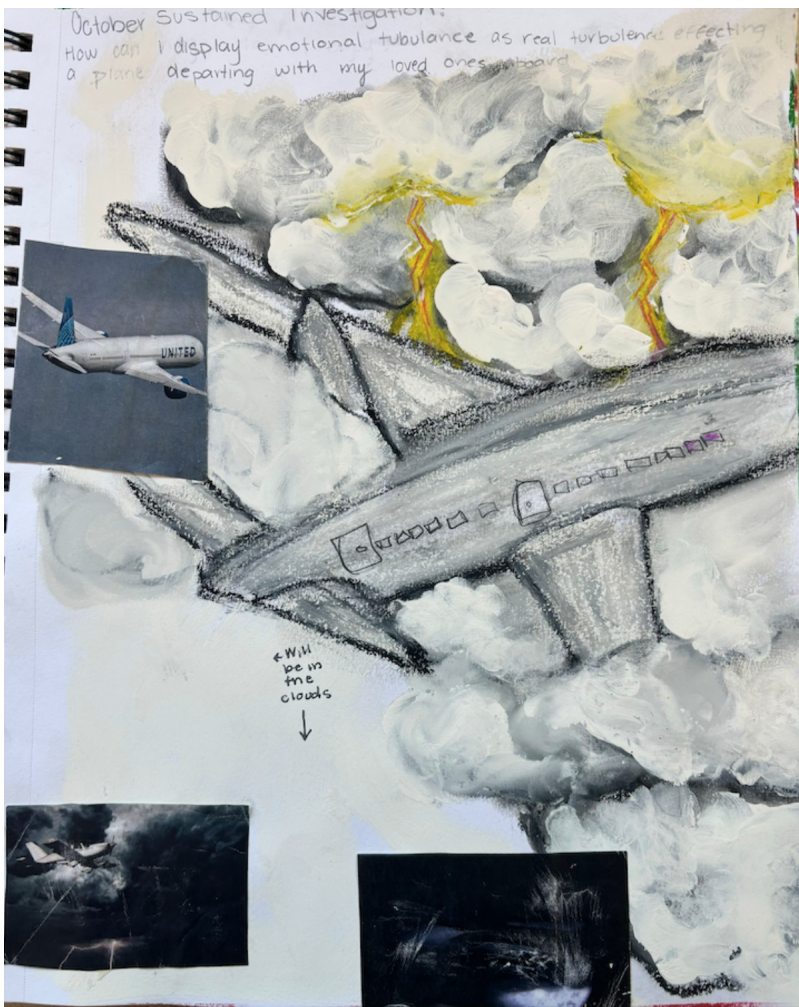


Image 2

Sustained Investigation

Height: 10

Width: 9

Depth: 0

Materials: Acrylic paint, oil pastel

Process(es):

Created the turbulent background displaying emotions surrounding the plane and the travel itself.

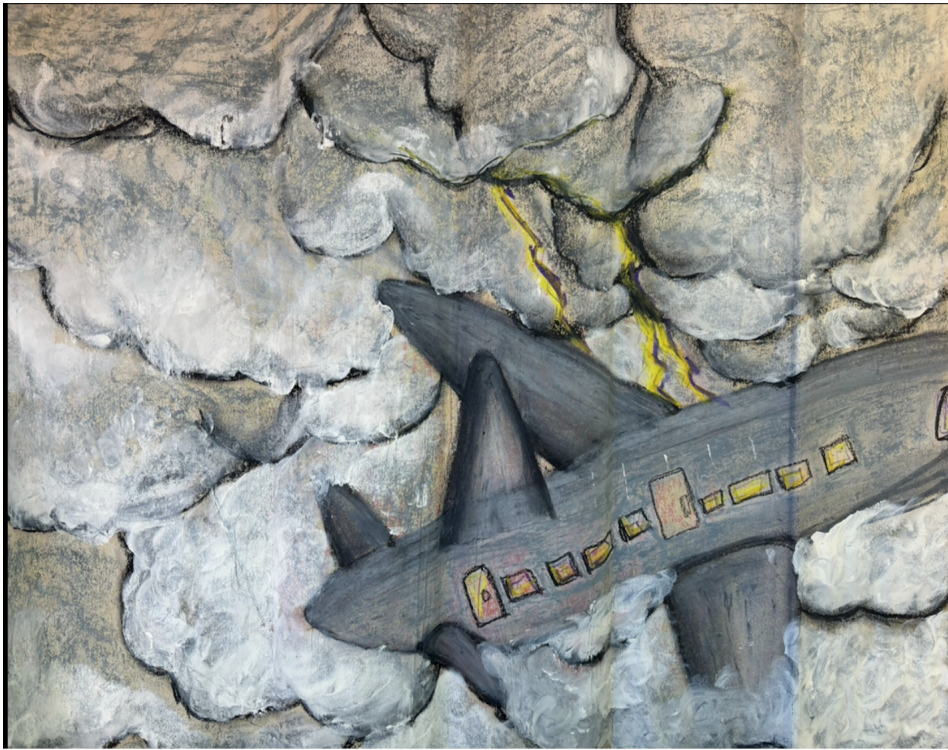


Image 3

Sustained Investigation

Height: 20

Width: 35

Depth: 0

Materials: Oil pastels, pen, acrylic paint

Process(es):

Created a background that gave the plane movement with pastels then created a moving plane.

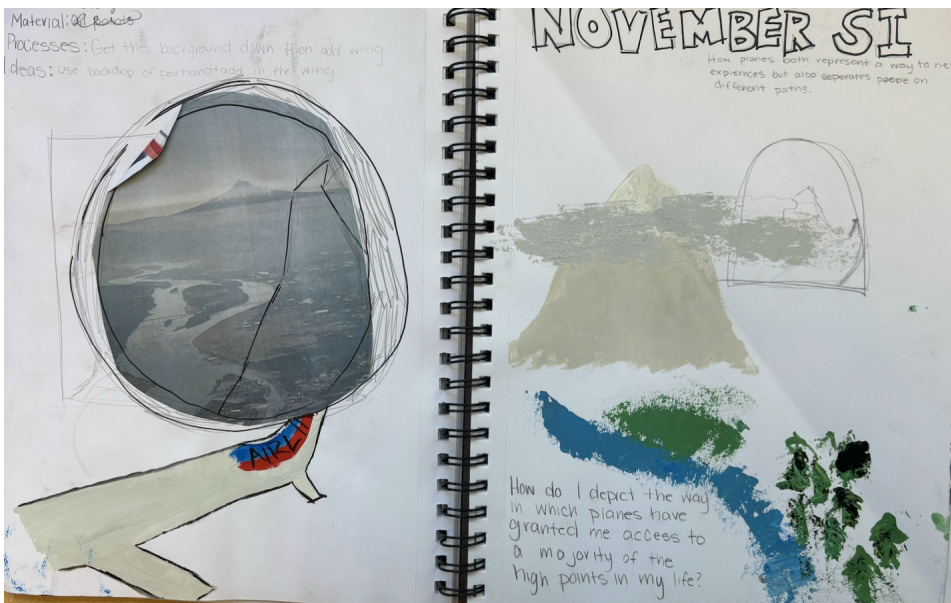


Image 4

Sustained Investigation

Height: 10

Width: 18

Depth: 0

Materials: Acrylic paint, black pen

Process(es):

Created what I wanted to be seen behind it and the familiar sights that were being left behind.



Image 5

Sustained Investigation

Height: 15

Width: 25

Depth: 0

Materials: Acrylic paint

Process(es):

Created the background to represent
Portland and its scenery then the plane
wing to symbolize flight



Image 6

Sustained Investigation

Height: 9

Width: 10

Depth: 0

Materials: Water color and acrylic paint

Process(es):

Created a complex and colorful background to display complexities outside of the plane itself.



Image 7

Sustained Investigation

Height: 20

Width: 35

Depth: 0

Materials:

Water color, acrylic paint, posca paint pens, black pen

Process(es):

Created the intricate background displaying how the plane is moving away from where it once rested.

JANUARY 21

Abstract plane | How planes both represent a way to new experiences but also people exiting on different paths.
Using pastels

Guiding Question: How do I show the complicated emotions with a symbol of a plane.

Process: Start with a figure of a plane the layer on top to show the complications
Ideas: Start with plane figure then begin layering colors.

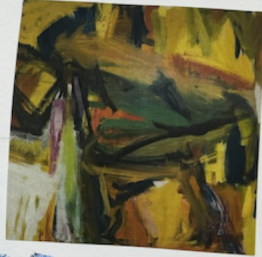


Image 8

Sustained Investigation

Height: 10

Width: 9

Depth: 0

Materials: Oil pastels, acrylic paint

Process(es):

Created the hectic background to display the movement and complexity of flight.

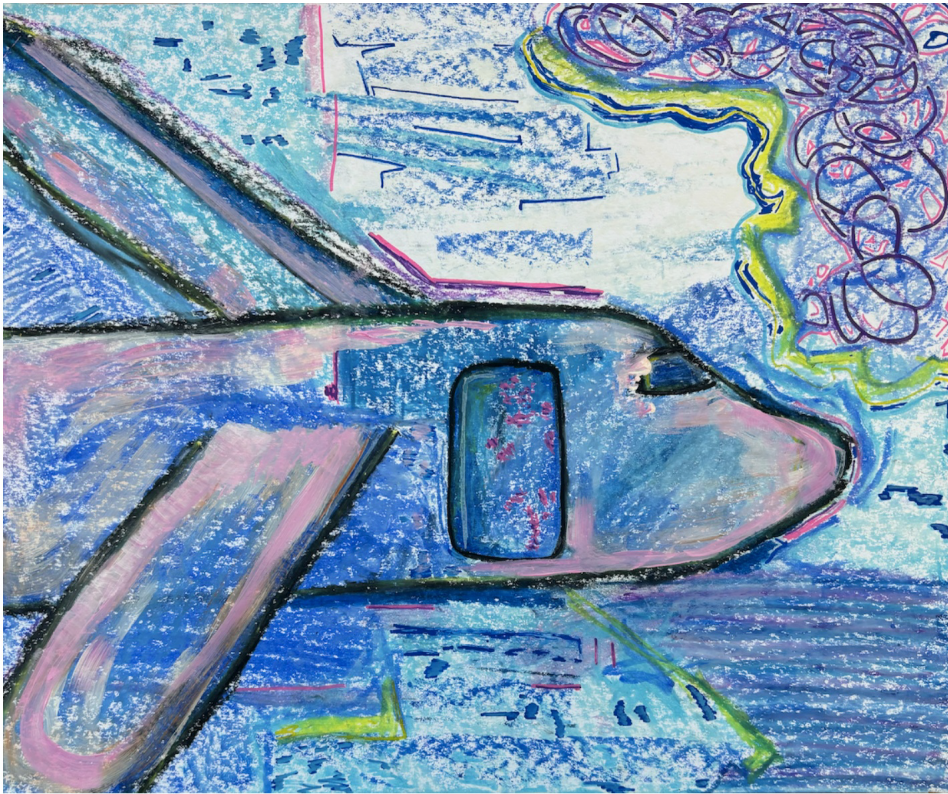


Image 9

Sustained Investigation

Height: 15

Width: 20

Depth: 0

Materials: Oil pastels, pen, acrylic paint

Process(es):

Lines to display the movement and to display how it is leaving while also entering with the colors.

FEBRUARY SIT

Guiding question: How does a zoomed in aspect of the plane symbolize a complicated relationship?

Sustained Investigation: How planes represent new experiences and the ending of other relationships.

Processes: I will start by choosing a part of the plane I deem most visually interesting then zoom into the detail on that part.

Other: using acrylic paint, zooming in the heightened detail,



Image 10

Sustained Investigation

Height: 10

Width: 9

Depth: 0

Materials: Posca paint pens

Process(es):

The process was the to the abstract pieced and create something of my own using the emotions.



Image 11

Sustained Investigation

Height: 20

Width: 30

Depth: 0

Materials: Acrylic paint

Process(es):

Toned down the lines and blended it more together while also symbolizing the light that flight bring

MARCH SI

Central idea: How planes both represent a way to new experiences but also people exiting lives on different paths.

Guiding question: How are pilots represented in a way that displays their both voluntary and involuntary need to leave.



Image 12

Sustained Investigation

Height: 10

Width: 9

Depth: 0

Materials: Oil pastel and black pen

Process(es):

Recreated then pieces to symbolize the abstract careers and to show juxtaposition of careers.



Image 13

Sustained Investigation

Height: 20

Width: 15

Depth: 0

Materials: Acrylic paint

Process(es):

The pilot himself represents my fathers decisions, the background is the military and him leaving it

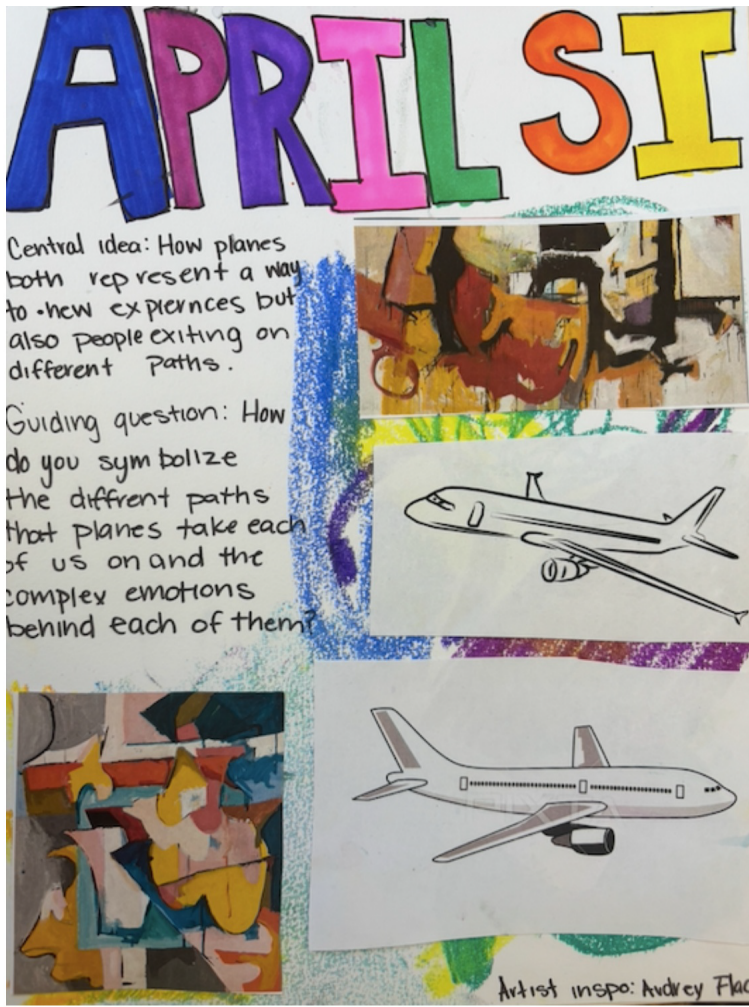


Image 14

Sustained Investigation

Height: 10

Width: 9

Depth: 0

Materials:

oil pastel, posca paint pen, black pen

Process(es):

Created a complex and colorful background to put the planes atop of displaying the emotion.



Image 15

Sustained Investigation

Height: 25

Width: 30

Materials:

Water color, acrylic paint, posca paint pens, black pen

Process(es):

Wanted to create a complex background with 3 planes atop to show the differing paths people take.

Analytic Scoring Rubric Row D: Drawing Skills

1	2	3
<i>Visual evidence of rudimentary and moderate Drawing skills.</i>	<i>Visual evidence of moderate and good Drawing skills.</i>	<i>Visual evidence of good and advanced Drawing skills.</i>

Score Rationale

While there is evidence of moderate drawing skill of space in Image 5, the preponderance of visual evidence demonstrates rudimentary drawing skills (Images 2, 3, 6, 7, 9, 11, 13, and 15). For example, the emerging use of contour lines to define airplane shapes is prevalent in Images 6, 7, 9, and 15. Images 3, 11, and 13 consider describing form through light and shade yet don't reach a full range of value, and subject matter edges remain prominent.

Images 6, 7, and 15 attempt varied mark-making through symbolic color and line to fill the backgrounds in a youthful, abstract way. However, the contour airplane shapes get lost in Images 6, 7, and 15 due to their line weight. Compositional development is moderate in Image 3, where the voluminous clouds balance the lightning and airplane, and in Image 5, where the work shows a proficient understanding of size to create the illusion of depth.

Overall, there is visual evidence of rudimentary and moderate Drawing skills.



Image 3



Image 6