



2024 AP[®] Drawing Art and Design

Sustained Investigation

Analytic Scoring Rubric and Score Rationale

Row C—Score 3

Written Evidence

Sustained Investigation

Identify the inquiry that guided your sustained investigation.

Response:

The question guiding my sustained investigation is, "How can I visualize the impact and effect that the people close to us can leave on our lives?" I feel very connected to this question because at the beginning of this year several of my close friends ended up moving to college, and it really made me realize the impacts that they had on my life. So, I want to really focus on human relationships, visualizing them from a positive and negative point of view, with a goal of exaggerating the emotion using a mix between color and, and black and white in my pieces.

Describe ways your sustained investigation developed through practice, experimentation, and revision.

Response:

Throughout my sustained investigation I experimented using exaggerated light and dark values with a goal to emphasize a deeper emotion in my pieces. 11, 13 I also used color to create a physical separation between the positive and negative human connections. 4, 15 Additionally, I incorporated a lots of string as an interesting textural element in my pieces, to represent the connection between the figures. 6, 13, 14 I spent a lot of time in my sketchbook practicing different methods of incorporating the string without taking away from the intended meaning or potential ruining my pieces.



Image 1

Sustained Investigation

Height: 6.5

Width: 8.5

Depth: 0

Materials: Colored pencils, and pencils

Process(es):

This piece visually represents how people can tear others down with the use of ripping paper.

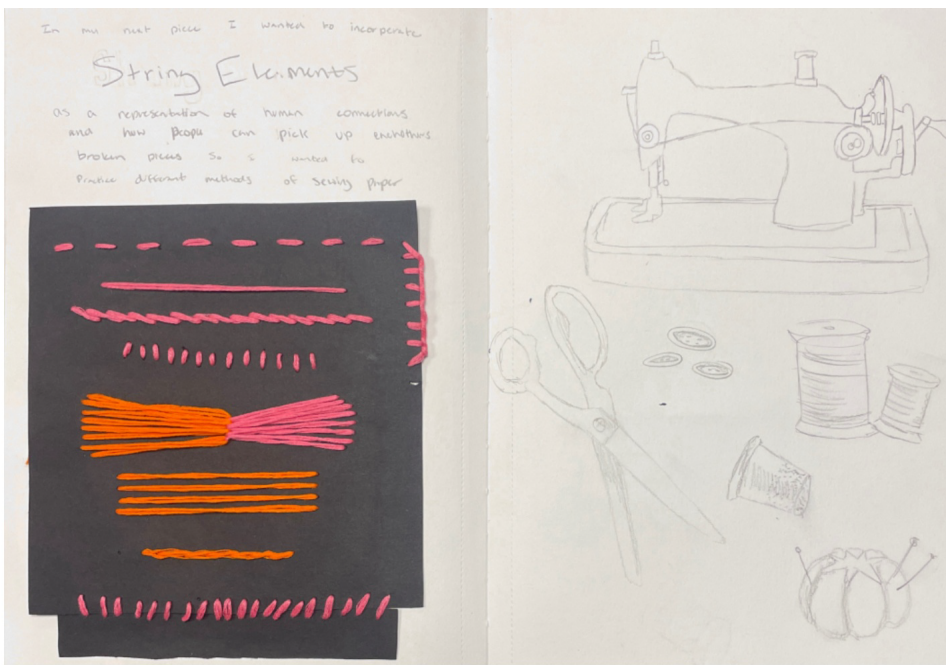


Image 2

Sustained Investigation

Height: 10

Width: 15

Depth: 0

Materials: String, and pencil

Process(es):

Experimentation of different methods to sew/incorporating string into paper to represent connection



Image 3

Sustained Investigation

Height: 8.5

Width: 8.5

Depth: 0

Materials:

Colored pencils, charcoal, a needle, and string

Process(es):

I ripped the paper and stitched it back together to show how people pick up each other broken parts.



Image 4

Sustained Investigation

Height: 7.5

Width: 10

Depth: 0

Materials:

Colored pencils, charcoal, and string

Process(es):

The feeling of being left out in a group and people seeing others having fun without including them.

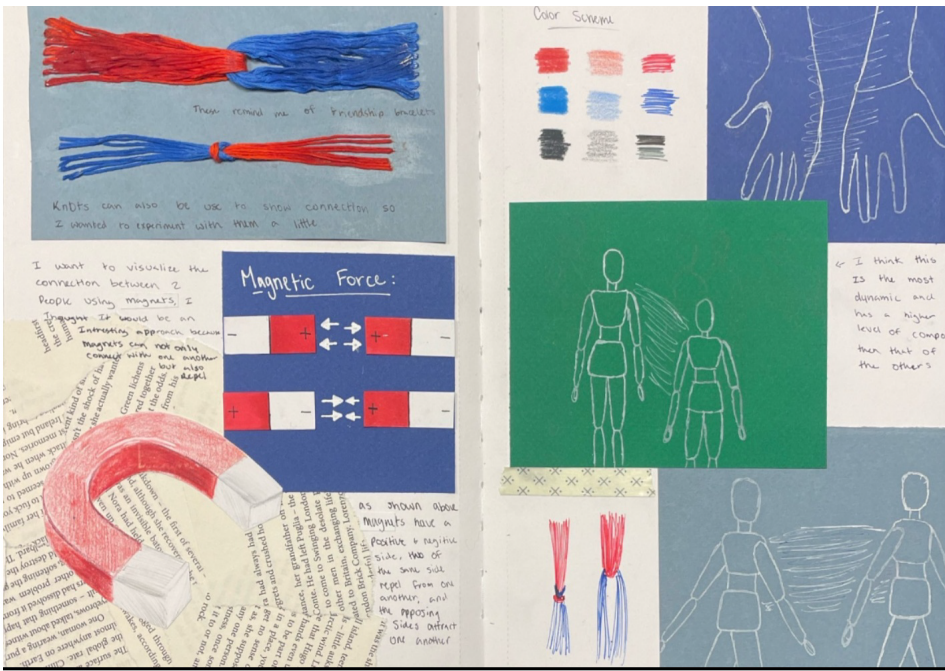


Image 5

Sustained Investigation

Height: 10

Width: 15

Depth: 0

Materials:

String, colored pencils, white gel pen, book pages, and a pen

Process(es):

Research about magnetic connection as a representation of the connection between friends



Image 6

Sustained Investigation

Height: 9

Width: 11

Depth: 0

Materials:

Colored pencils, charcoal, and string,
and book pages

Process(es):

The connection between friends, and
the book pages represents that story's
that are between them.

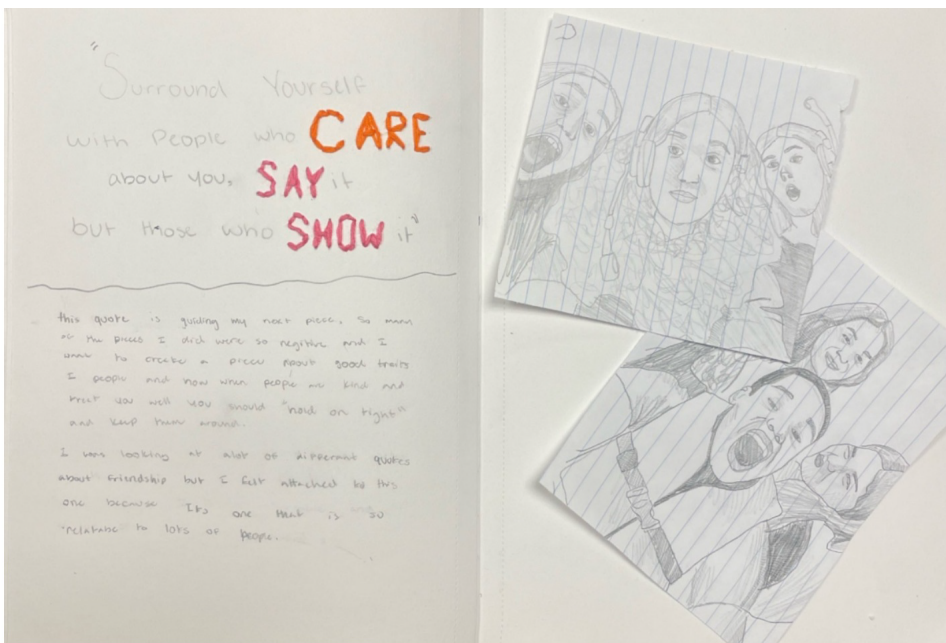


Image 7

Sustained Investigation

Height: 10

Width: 15

Depth: 0

Materials: Pencil and string

Process(es):

This is a quote that guided my piece and some sketches used to practice capturing facial expressions



Image 8

Sustained Investigation

Height: 6

Width: 10

Depth: 0

Materials:

Charcoal, string, and a micron pen

Process(es):

Represents that people need to keep those who make a positive impact on them close.



Image 9

Sustained Investigation

Height: 10

Width: 15

Depth: 0

Materials:

Chalk pastels, colored pencils, watercolor, acrylic paint, and oil pastel

Process(es):

A media study connected to determine what media I can capture the faces and expressions in people.



Image 10

Sustained Investigation

Height: 11

Width: 8.5

Depth: 0

Materials: Charcoal and colored pencils

Process(es):

Comfort that people can provide to one another using building blocks to represent a childhood friend

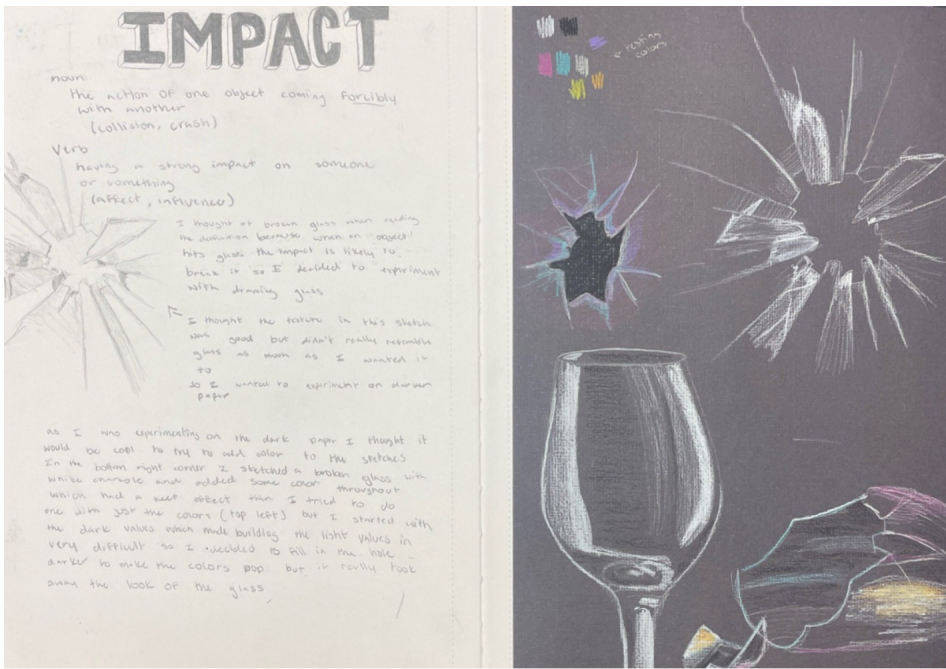


Image 11

Sustained Investigation

Height: 10

Width: 15

Depth: 0

Materials:

Charcoal, colored pencils, and pencil

Process(es):

Research and sketches that symbolize the word impact since my pieces show the impact of connections.



Image 12

Sustained Investigation

Height: 11

Width: 7.5

Depth: 0

Materials: Charcoal

Process(es):

A visual representation of the pressure that people can put on others



Image 13

Sustained Investigation

Height: 18

Width: 9

Depth: 0

Materials: Charcoal and string

Process(es):

A representation of manipulation using a marionette puppet taking someone down the wrong path.

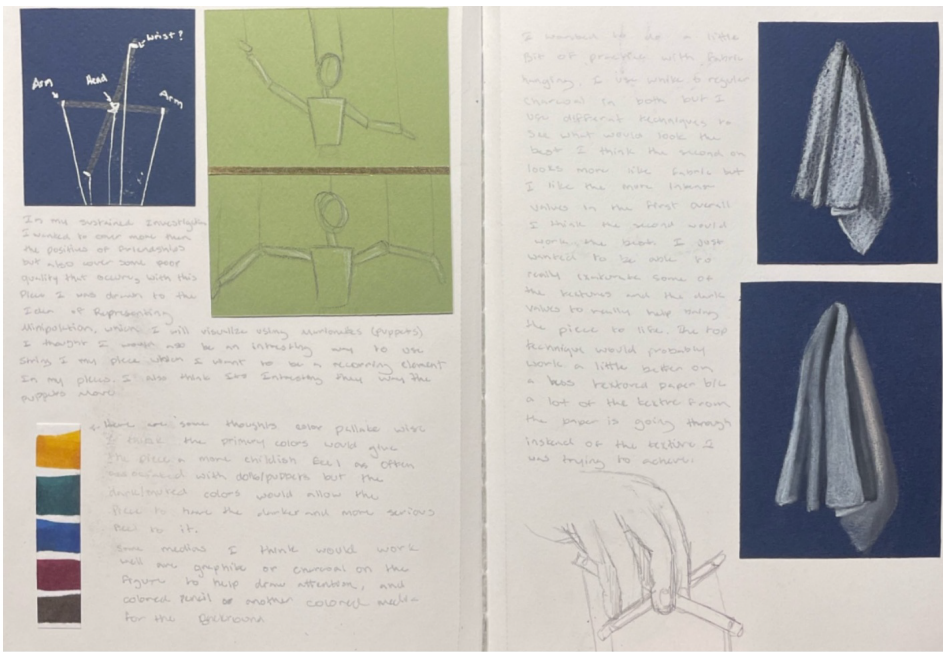


Image 14

Sustained Investigation

Height: 10

Width: 15

Depth: 0

Materials:

Charcoal, pencil, and alcohol markers

Process(es):

I researched marionette puppets and hot to hold them, as a representation of manipulation/guidance.

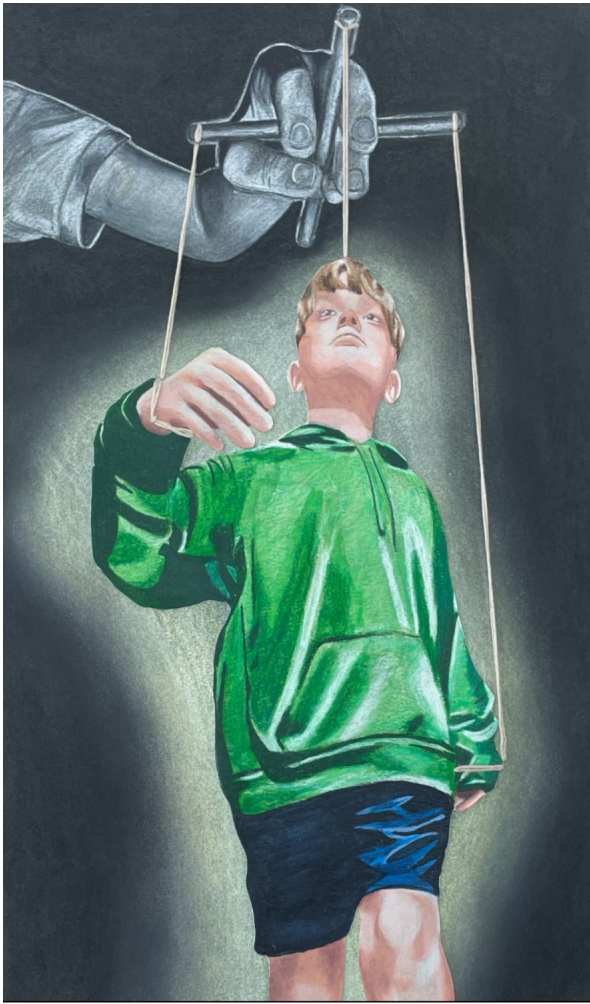


Image 15

Sustained Investigation

Height: 18

Width: 9

Depth: 0

Materials:

Watercolor, colored pencils, charcoal,
and string

Process(es):

People can bring others to "the light"
and guide others in a better direction.

Analytic Scoring Rubric Row C: Materials, Processes, and Ideas

1	2	3
<p>Little to no evidence of visual relationships among materials, processes, and ideas.</p>	<p>Visual relationships among materials, processes, and ideas are evident.</p>	<p>Visual relationships among materials, processes, and ideas are evident and demonstrate synthesis.</p>

Score Rationale

In this sustained investigation, the visual relationships among materials, processes, and ideas are evident and show synthesis. In Image 1, the intent behind the process was to represent how people “can tear others down with the use of ripping paper.” The deliberate use of a torn portrait piece reinforces the idea of tearing others down. Throughout this sustained investigation, string conveys the concept of interconnectedness. In Image 3, a ripped portrait is stitched back together and sits upon a drawing of sewing implements. The idea is “to show how people pick up each other(s) broken parts.” This decision leads to developing contrast by rendering the implements in black and white and the portrait in color, adding depth and complexity to the visual narrative.

Similarly, in Image 4, color and stitching isolate one figure and convey “the feeling of being left out.” While not as successfully integrated, the cut-up book pages in Image 6 have been inserted between two figures to represent stories “between them.” Image 15 presents a figure as a puppet to demonstrate manipulation. Again, the deliberate use of string and color contrasting with black and white conveys that “people can bring others to ‘the light’ and guide others in a better direction.” The carefully considered processes and materials employed or experimented with in this sustained investigation support the visual understanding of the inquiry.

Because of the preponderance of images (visual evidence) demonstrating synthesis between materials, processes, and ideas (explained in material and process text accompanying images), this sustained investigation achieved a 3 in Row C.

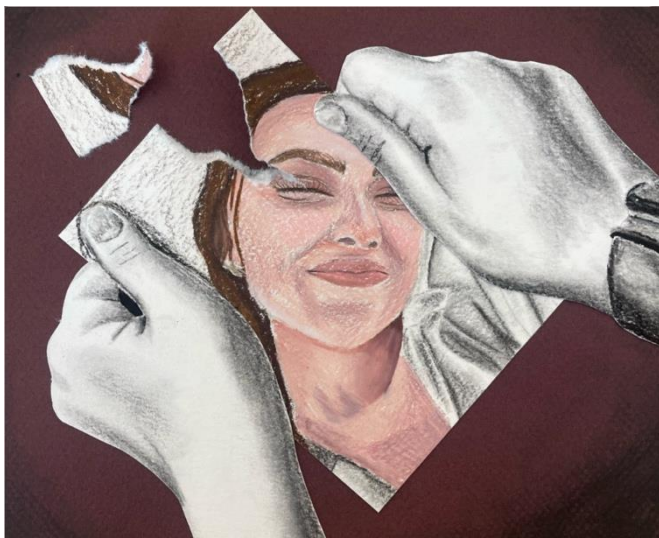


Image 1



Image 15