



2024 AP[®] Drawing Art and Design

Sustained Investigation

Analytic Scoring Rubric and Score Rationale

Row C–Score 1

Written Evidence

Sustained Investigation

Identify the inquiry that guided your sustained investigation.

Response:

"How can we examine the world through the eyes of an unreliable narrator, and explore this perspective through lowbrow portraiture?" This will display how different each person sees and experiences the world. People have such differing morals, perspectives, ways of processing information, and means of expressing their thoughts that it would be impossible to capture all perspectives in one series. However, by looking at one hypothetical, one single girl's warped perspective of the world, I can show the individuality and in this case unreliability of someone's point of view.

Describe ways your sustained investigation developed through practice, experimentation, and revision.

Response:

I base the style of this project on the genre of Lowbrow art (Pop Surrealism) specifically artists Mark Ryden and Ray Caesar. The technique I use is strong visual contrast and illustrative proportions to explore the fictional and unrealistic views of the subject, not shying away from the fact that this piece is a fictional representation of a concept. Realism is very much not the goal in this project, seen in works five and eight. The materials I am experimenting with include: acrylic paint, colored pencils, and ink on different materials such as chipboard, canvas and wood.



Image 1

Sustained Investigation

Height: 24

Width: 48

Depth: 2

Materials: Acrylic on Wood

Process(es):

Compile references, sketch, paint



Image 2

Sustained Investigation

Height: 24

Width: 48

Depth: 2

Materials: Acrylic on Wood

Process(es):

Compile references, sketch, paint



Image 3

Sustained Investigation

Height: 24

Width: 48

Depth: 2

Materials: Acrylic on Wood

Process(es):

Compile references, sketch, paint



Image 4

Sustained Investigation

Height: 28

Width: 12

Depth: 1

Materials: Acrylic on Wood

Process(es):

Compile references, sketch, paint, revisit after months and change drastically



Image 5

Sustained Investigation

Height: 18

Width: 16

Materials: Acrylic on Canvas

Process(es):

Sketch 3 initial concepts, Compile references, sketch, paint



Image 6

Sustained Investigation

Height: 6

Width: 8

Depth: 0

Materials: Acrylic on Chipboard

Process(es):

Sketch 3 initial concepts, Compile references, sketch, paint



Image 7

Sustained Investigation

Height: 18

Width: 16

Depth: 1

Materials:

Acrylic, Tempera, Fine Liners on Canvas

Process(es):

Compile references, sketch, paint, line
on top



Image 8

Sustained Investigation

Height: 18

Width: 12

Depth: 0

Materials:

Oil pastel, Acrylic Paint, Chipboard

Process(es):

Compile references, sketch, oil pastel,
paint background



Image 9

Sustained Investigation

Height: 9

Width: 7

Materials:

Colored pencil, Paint Pen, Acrylic Paint,
on Chipboard

Process(es):

Compile references, sketch, colored
pencil, paint pen lettering, paint
remainder

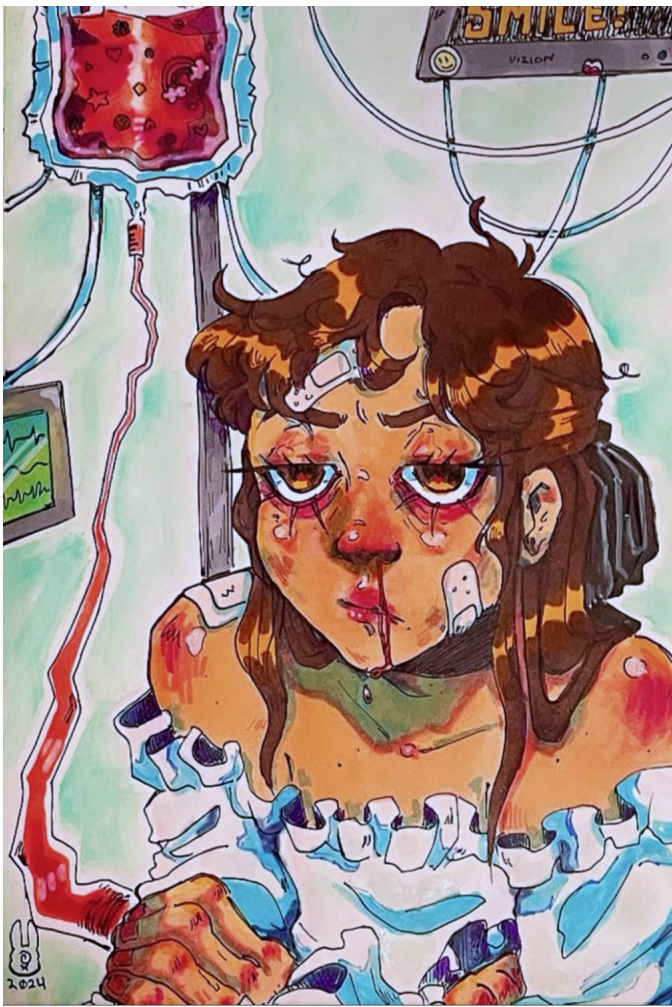


Image 10

Sustained Investigation

Height: 8

Width: 6

Depth: 0

Materials:

Alcohol Markers, Fine Liners, Acrylic
Paint, Paper

Process(es):

Sketch 2 initial concepts, Ink lines, color
with alcohol markers, Acrylic remainder



Image 11

Sustained Investigation

Height: 18

Width: 16

Depth: 1

Materials:

Acrylic, Paper, Ink, Paste on Canvas

Process(es):

Sketch 2 initial concepts, paint, stamp
print on paper, paste paper to canvas

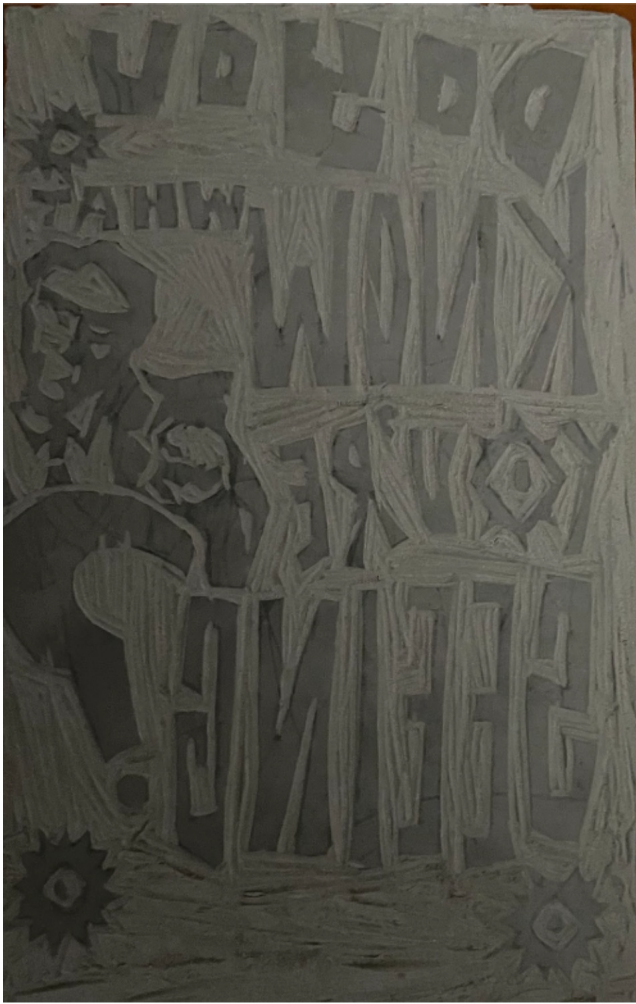


Image 12

Sustained Investigation

Height: 6

Width: 5

Depth: 0

Materials: Linoleum Block, Carving tools

Process(es): Carve out negative space



Image 13

Sustained Investigation

Height: 6

Width: 5

Depth: 0

Materials:

Linoleum Block, Tracing paper,
Graphite, Carving tools

Process(es):

Sketch design, transfer onto tracing
paper, transfer onto linoleum



Image 14

Sustained Investigation

Height: 24

Width: 48

Depth: 2

Materials: Permanent Marker, Wood

Process(es):

Sketch broad strokes with permanent
parker, label subjects in piece



Image 15

Sustained Investigation

Height: 8

Width: 6

Depth: 0

Materials: Graphite on Paper

Process(es):

Loosely sketch initial idea, notate what to include, create alternatives, repeat

Analytic Scoring Rubric Row C: Materials, Processes, and Ideas

| 1 | 2 | 3 |
|---|--|---|
| Little to no evidence of visual relationships among materials, processes, and ideas. | Visual relationships among materials, processes, and ideas are evident . | Visual relationships among materials, processes, and ideas are evident and demonstrate synthesis . |

Score Rationale

This sustained investigation shows little to no evidence of visual relationships among materials, processes, and ideas. The aim to “examine the world through the eyes of an unreliable narrator, and explore this perspective through lowbrow portraiture” does not aid decision-making for material, processes, and idea choices. Instead, most images show a character in unexplained scenes with no narrative. Consequently, materials and processes do little to support the idea. For example, Images 5 and 6 illustrate a female character in indeterminant situations. For both images, the process is merely a list of actions taken to develop the image, “sketch 3 initial concepts, Compile references, sketch, paint,” which provides no insight into the intent. The descriptions of materials and process(es) do not inform the visual relationships among materials, processes, and ideas. It is unclear why acrylic paint is the medium for “lowbrow portraiture,” and the process(es) descriptions do not further explain the idea or the material choices. Thus, visual relationships among materials, processes, and ideas are not evident, and earned a score of 1.



Image 5



Image 6