



2024 AP[®] Drawing Art and Design

Sustained Investigation

Analytic Scoring Rubric and Score Rationale

Row B–Score 2

Written Evidence

Sustained Investigation

Identify the inquiry that guided your sustained investigation.

Response:

My IQ is, 'how can I utilize different art supplies' qualities to design illustrations that reflect my subconscious emotions and thoughts through cosmic surrealism and symbolism?' My art is a creative outlet for my forever changing mind and soul, in which I represent in my psychedelic spirals and symbolic appearances of traveling bubbles to illustrate a passage of time and feelings that result in cycles and personal growth. I chose to draw as a form of escapism and use space as a blank slate for lighting and energetic/dull color schemes in each piece to convey a variety of moods.

Describe ways your sustained investigation developed through practice, experimentation, and revision.

Response:

My sustained investigation was fueled by my emotional connection to each piece, in which I drafted many revisions for appealing composition, attempted new techniques in blending and shading, capitalized on the soft texture effects of various mediums, experimented with color and lighting to signify mood along with establishing a empty and vast sense of space in each scene in order to design pictures that expresses my perspective coherently. Through each of these practices I was able to make each drawing as close to what I had envisioned while building a better understanding of my mediums.



Image 1

Sustained Investigation

Height: 24

Width: 36

Materials:

red, yellow, blue, black & white oil paint
on framed canvas.

Process(es):

series of revising, dry brush for soft
glow, used paint mediums to thin, blend,
& layer.



Image 2

Sustained Investigation

Height: 14

Width: 17

Materials:

Black & white charcoal, graphite, &
natural toned paper

Process(es):

soft charcoal for opacity & hard graphite
to maintain lightness for glowing effect,



Image 3

Sustained Investigation

Height: 20

Width: 15

Materials:

Black & white charcoal & graphite on warm grey toned paper. blended to achieve softer details

Process(es):

Used a contrast of soft charcoal & white to give a the look of a bright light source on grey paper



Image 4

Sustained Investigation

Height: 14

Width: 12

Materials:

pencil, charcoal & paper blender on
natural toned paper

Process(es):

revisions, blender used to keep details
faint to look faded or give a sense of
movement



Image 5

Sustained Investigation

Height: 12

Width: 8.5

Materials:

Prismacolor pencils, graphite pencil,
drawing paper

Process(es):

used paper as negative space for
bubble details, lively colors v. dull grey =
inner & outer self

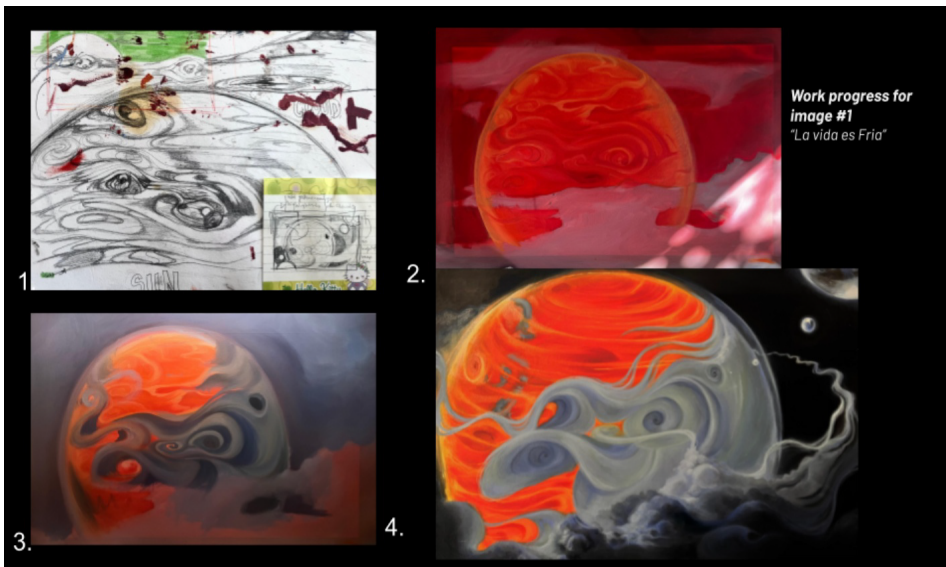


Image 6

Sustained Investigation

Height: n/a

Width: n/a

Materials: n/a

Process(es):

thumbnail, changes in design & color
scheme, rendering in lighting

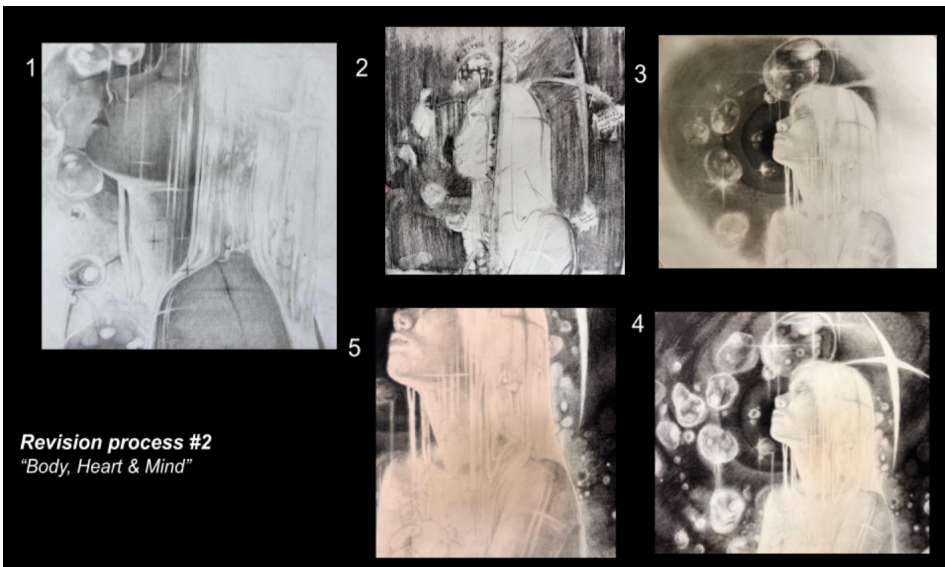


Image 7

Sustained Investigation

Height: n/a

Width: n/a

Materials: n/a

Process(es):

sketch, thumbnail, changes made in values to allude to vast space and bright light w/ charcoal

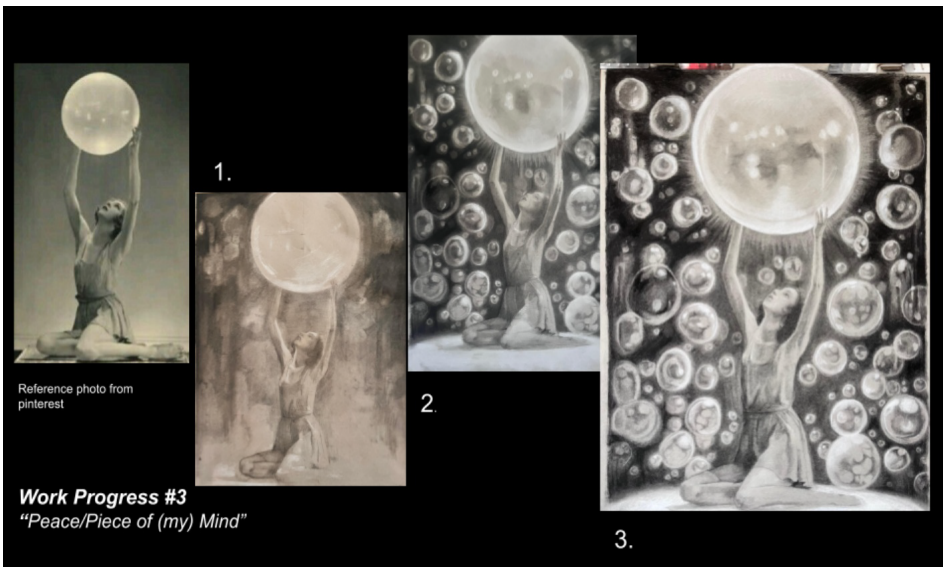


Image 8

Sustained Investigation

Height: n/a

Width: n/a

Materials: n/a

Process(es):

Development of shadows and highlights,
utilized warm grey paper to act as a
midtone

Citation(s):

reference photo from Pinterest

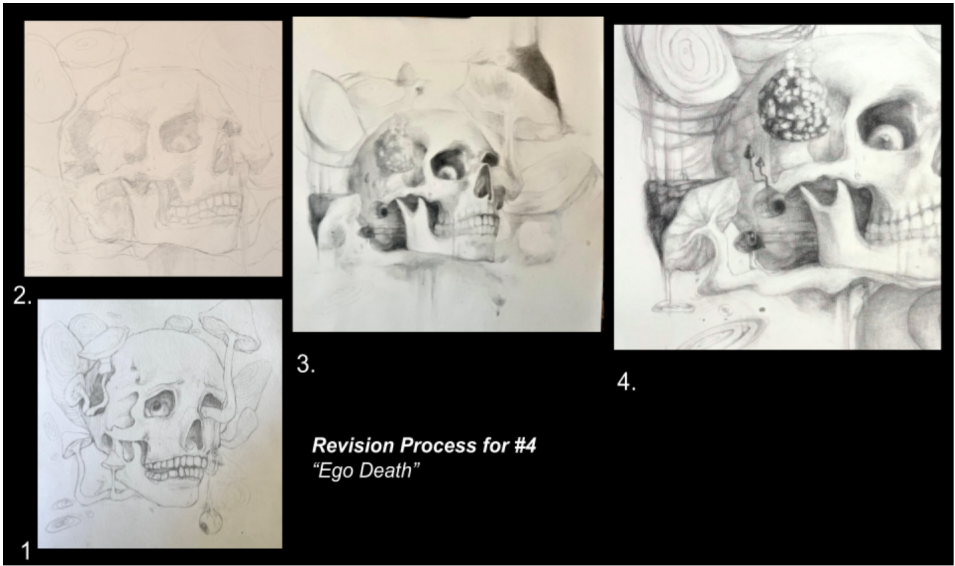


Image 9

Sustained Investigation

Height: n/a

Width: n/a

Materials: n/a

Process(es):

revision, changes in art supplies and details w/ hard graphite for faint effect



Image 10

Sustained Investigation

Height: n/a

Width: n/a

Materials: n/a

Process(es):

concept sketch, color & composition

thumbnail changes,

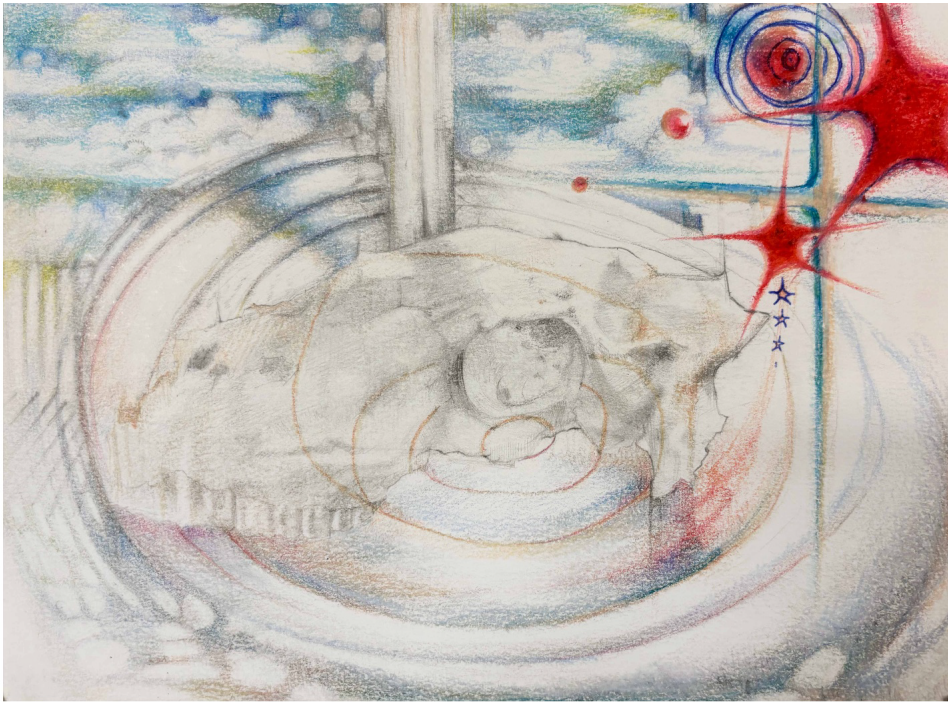


Image 11

Sustained Investigation

Height: 5.5

Width: 8

Materials:

Prismacolor pencils, graphite, oil pastel,
ballpoint pen on mixed media paper

Process(es):

layered pencil & Prismacolor for soft
edges to display a moving motion, oil
pastels for opacity



Image 12

Sustained Investigation

Height: 12

Width: 18

Materials: Oil paint on canvas board

Process(es):

used light & line direction to create
visual path and symbolic path with one
point perspective



Image 13

Sustained Investigation

Height: 14

Width: 16

Materials:

Prismacolor pencils, graphite, black ink, microns, markers & oil pastel on natural tones paper

Process(es):

pink around white pastel to create soft color in lighting, purple for shadows & pink for highlights

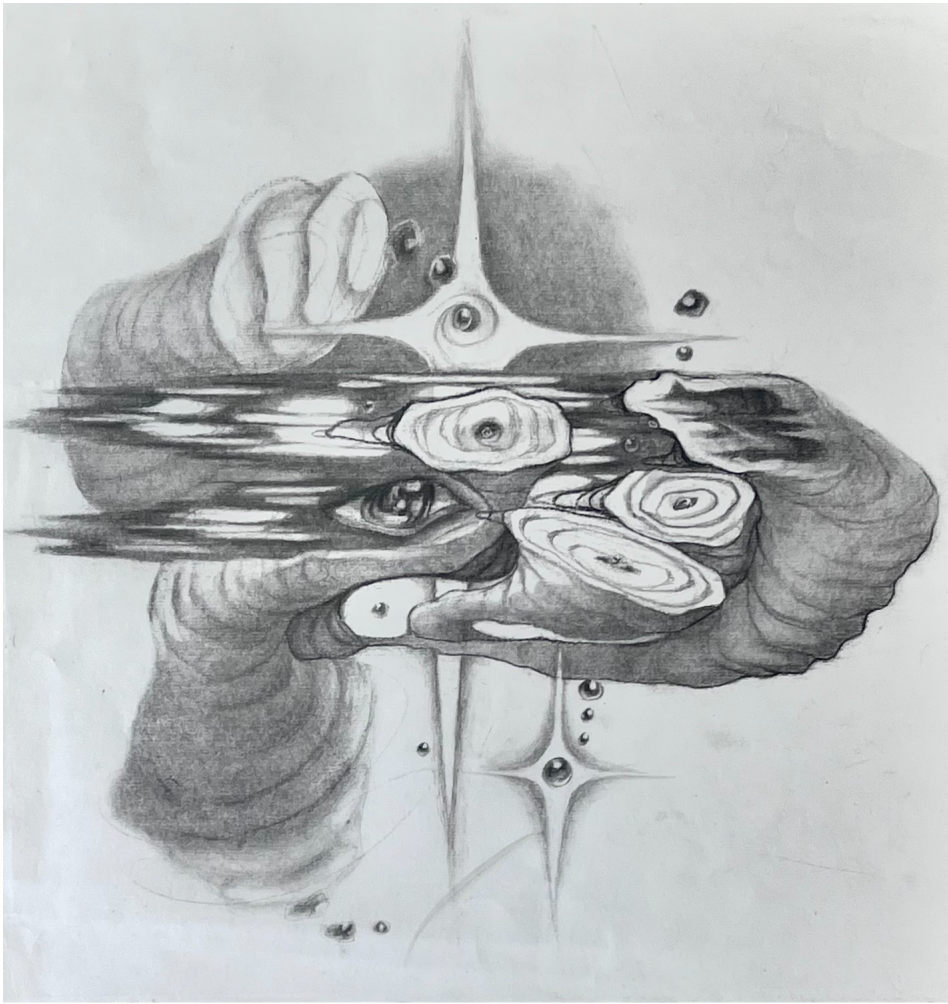


Image 14

Sustained Investigation

Height: 14

Width: 14

Materials:

graphite, charcoal, paper smudger,

Process(es):

thin layers of charcoal for shadows, etc.

+ pencil for thinner lines and smaller details

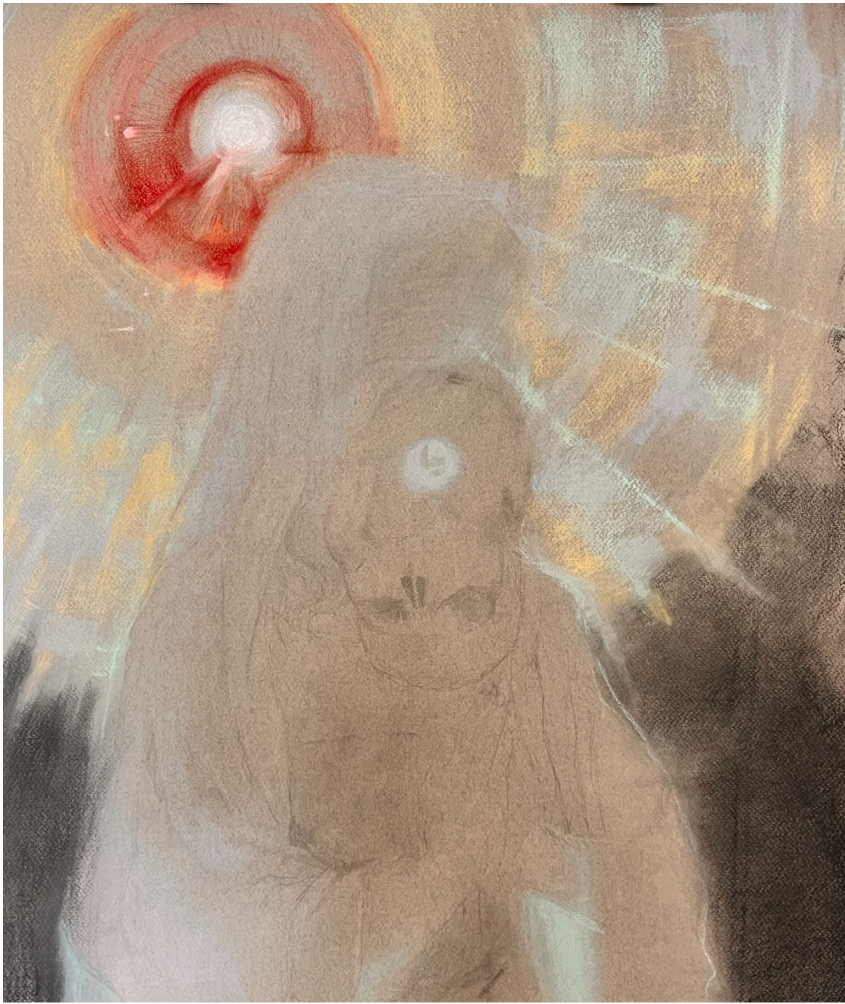


Image 15

Sustained Investigation

Height: 24

Width: 18

Materials:

chalk pastels, charcoal (white & black),
on cool grey paper

Process(es):

used bright red as brightest source of
light while the softer tones of blue,
yellow & green are dim

Analytic Scoring Rubric Row B: Practice, Experimentation, and Revision

Writing Prompt 2: Describe ways your sustained investigation developed practice, experimentation, and revision.

1	2	3
Visual evidence of practice, experimentation, and revision does not relate to a sustained investigation.	Visual and written evidence of practice, experimentation, and revision relates to a sustained investigation.	Visual evidence of practice, experimentation, and revision demonstrates development of the sustained investigation. AND Written evidence describes ways the sustained investigation developed through practice, experimentation, and revision.

Score Rationale

The visual and written evidence of practice, experimentation, and revision relates to the sustained investigation as an examination into “how can I utilize different art supplies’ qualities to design illustrations that reflect my subconscious emotions and thoughts through cosmic surrealism and symbolism?” but the writing is vague and does not fully describe ways the investigation develops through practice, experimentation, and especially revision.

Writing Prompt 2 vaguely states how images “capitalized on the soft texture effects of various mediums” which somewhat connects to utilizing different art supplies. However, in Image 13, the process states, “pink around white pastel to create soft color in lighting” and Image 11 states, “layered pencil & Prismacolor for soft edges to display a moving motion, oil pastels for opacity” but does not describe how those choices further develop the images to reflect subconscious emotions and thoughts through cosmic surrealism and symbolism.

It remains unclear how Image 2, “soft charcoal for opacity & hard graphite to maintain lightness” advances the development of the investigation beyond providing a “glowing effect.”

Written evidence states how the portfolio “experimented with color and lighting to signify mood along with establishing an empty and vast sense of space in each scene.” However, this is not clear in the presented work. Image 7, which is connected to the work in Image 2, states “changes made in values to allude to vast space and bright light w/ charcoal,” illustrates the “soft texture effects of various mediums” yet doesn’t advance the inquiry further, therefore, the written evidence of practice, experimentation, and revision relates to a sustained investigation.

Revision is stated in both Writing Prompt 2 and throughout the process boxes by Images 1, 4, 6, 7, and 9 yet what is stated isn’t apparent in the visual evidence and doesn’t show image transformation. The revision mentioned is instead progress which results in the finished image, not a modified, clarified, or reimagined artwork. For example, in Image 9 the process box states, “revision, changes in art supplies and details w/ hard graphite for faint effect” but the related Image (4) is a finished artwork without further modifications.

Overall, the visual and written evidence of practice, experimentation, and revision relates to a sustained investigation.



Image 2

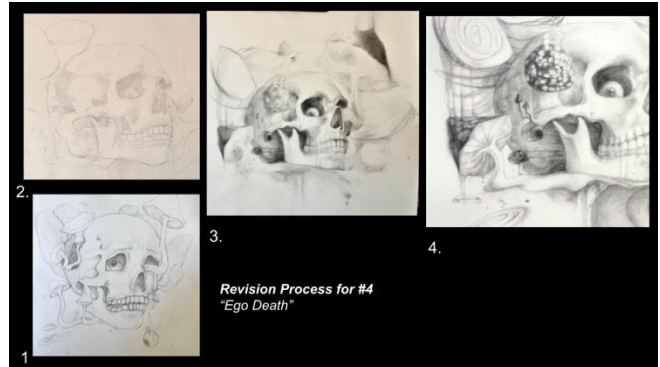


Image 9