



# **2024 AP<sup>®</sup> Drawing Art and Design**

**Sustained Investigation**

**Analytic Scoring Rubric and Score Rationale**

**Row B–Score 1**

# Written Evidence

## Sustained Investigation

Identify the inquiry that guided your sustained investigation.

Response:

In my series, I tried to explore the relationship among culture and fate. I connect my idea with Tarot cards, which is a set of cards that fortune tell based on the card you pick. I blended this element with Chinese traditional characters in legends that have similar meanings. Each card represents a stage you would experience in life. For instance, works 3, 5, 7 have symbols of skulls representing a disaster or change. The cards show a constant change in the future and that there is always two sides in one event. We will experience different events throughout our lives.

Describe ways your sustained investigation developed through practice, experimentation, and revision.

Response:

I began my series by researching tarot card and Chinese traditional elements. Due to my interest in both areas, I hope to blend in both cultures in my work. In my works, I portray the characters inside an arch, representing a common element seen in tarot cards. I used watercolor to show a sense of Chinese scrolls and ancient art and procreate for more details and line potray. By creating on digital platform, I can show the color of my work better and express the blending of traditional watercolor and digital art. I also reference Mucha's artwork and depicted his way of drawing lines.



# Image 1

Sustained Investigation

Height: 15.7

Width: 10.6

Depth: 0

Materials:

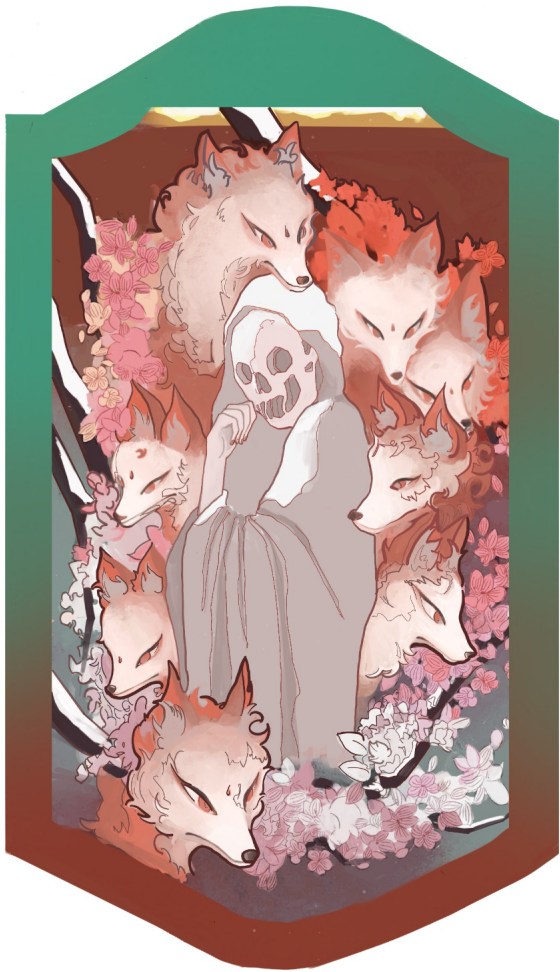
watercolor, color pencils, procreate

Process(es):

pencils for draft, character and color  
illustrated by watercolor, and procreate  
for details

Citation(s):

scroll painting, clothing and flowers  
depicted from internet



## Image 2

Sustained Investigation

Height: 15.7

Width: 10.6

Depth: 0

Materials: procreate

Process(es):

watercolor brushes and texture brushes  
in procreate

Citation(s):

fox images depicted from internet



## Image 3

Sustained Investigation

Height: 15.7

Width: 10.6

Depth: 0

Materials: procreate

Process(es):

watercolor brushes and texture brushes  
in procreate

Citation(s):

snake skull and character motion  
depicted from internet



## Image 4

Sustained Investigation

Height: 15.7

Width: 10.6

Depth: 0

Materials: watercolor, procreate

Process(es):

pencils for draft, character and color  
illustrated by watercolor, and procreate  
for details

Citation(s):

Lotus and traditional character clothing  
depicting images online



## Image 5

Sustained Investigation

Height: 15.7

Width: 10.6

Depth: 0

Materials: procreate

Process(es):

watercolor brushes and texture brushes  
in procreate

Citation(s):

skull and bones depicted from internet



## Image 6

Sustained Investigation

Height: 15.7

Width: 10.6

Depth: 0

Materials: procreate

Process(es):

watercolor brushes and texture brushes  
in procreate

Citation(s):

Lotus skull and fish depicted from  
images online





## Image 7

Sustained Investigation

Height: 15.7

Width: 10.6

Depth: 0

Materials: procreate

Process(es):

watercolor brushes and texture brushes  
in procreate

Citation(s): skull images depicted online



## Image 8

Sustained Investigation

Height: 15.7

Width: 10.6

Depth: 0

Materials: watercolor, procreate

Process(es):

pencils for draft, character and color  
illustrated by watercolor, and procreate  
for details

Citation(s):

plum and character motion depicted  
from internet



## Image 9

Sustained Investigation

Height: 15.7

Width: 10.6

Depth: 0

Materials: procreate

Process(es):

watercolor brushes and texture brushes  
in procreate

Citation(s):

background and character motion  
depicted from internet



## Image 10

Sustained Investigation

Height: 15.7

Width: 10.6

Depth: 0

Materials: watercolor, procreate

Process(es):

pencils for draft, character and color  
illustrated by watercolor, and procreate  
for details

Citation(s):

crane and character motion depicted  
from internet



## Image 11

Sustained Investigation

Height: 15.7

Width: 10.6

Depth: 0

Materials: procreate

Process(es):

watercolor brushes and texture brushes  
in procreate

Citation(s):

flower, fish and character motion  
depicted from internet



## Image 12

Sustained Investigation

Height: 15.7

Width: 10.6

Depth: 0

Materials: watercolor, procreate

Process(es):

pencils for draft, character and color  
illustrated by watercolor, and procreate  
for details

Citation(s):

character motion depicted from internet

## Image 13

Sustained Investigation

Height: 13.0

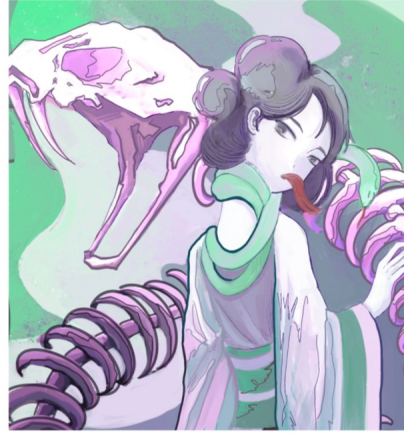
Width: 17.5

Depth: 0

Materials: procreate

Process(es):

watercolor brushes and texture brushes  
in procreate





## Image 14

Sustained Investigation

Height: 13.0

Width: 15.7

Depth: 0

Materials: procreate

Process(es):

watercolor brushes and texture brushes

in procreate





## Image 15

Sustained Investigation

Height: 13.0

Width: 15.7

Depth: 0

Materials: watercolor, procreate

Process(es):

pencils for draft, character and color  
illustrated by watercolor, and procreate  
for details

## Analytic Scoring Rubric Row B: Practice, Experimentation, and Revision

Writing Prompt 2: Describe ways your sustained investigation developed practice, experimentation, and revision.

1	2	3
Visual evidence of practice, experimentation, and revision <b>does not relate</b> to a sustained investigation.	Visual and <i>written</i> evidence of practice, experimentation, and revision <b>relates</b> to a sustained investigation.	Visual evidence of practice, experimentation, and revision <b>demonstrates development</b> of the sustained investigation. <b>AND</b> <i>Written</i> evidence <b>describes ways</b> the sustained investigation <b>developed</b> through practice, experimentation, and revision.

### Score Rationale

This portfolio explores “the relationship among culture and fate” by blending tarot cards with “traditional Chinese characters in legends,” inspired by the work of artist Alphonse Mucha. There is visual and written evidence of practice in how pencils and watercolor are used to illustrate drafts in Images 1, 4, 8, 10, 12, and 15. Additionally, process boxes repeatedly state the practice of using watercolor and texture brushes in Procreate, Images 2, 3, 5, 6, 7, 9, 11, 13, and 14. However, while the visual and written evidence demonstrate practice, there is no clear visual or written evidence identifying intentional experimentation and revision in Writing Prompt 2. As a result, there is no written and visual evidence of the sustained investigation's development through practice, experimentation, and revision.

Given the research described in Writing Prompt 2, this portfolio's visual evidence of practice, experimentation, and revision could benefit from further investigation of the combination of “tarot cards and Chinese traditional elements” through sketching, composition, or color studies, as examples.

Without visual and written evidence of practice, experimentation, and revision that relates to a sustained investigation, this portfolio achieved a score point of 1 in Row B.



Image 1



Image 7