



2024 AP[®] Drawing Art and Design

Sustained Investigation

Analytic Scoring Rubric and Score Rationale

Row A–Score 2

Written Evidence

Sustained Investigation

Identify the inquiry that guided your sustained investigation.

Response:

How can I use color, texture, and expression to show the journey of becoming the person I am today? Using self-portraiture and experimentation, I was able to express complex emotions in a range of styles and mediums, to express what words cannot. My goal was to share my mind to others, and challenge myself to do so by taking advantage of colors, space, and mark-making to combine my determination to understand myself and passion for making art.

Describe ways your sustained investigation developed through practice, experimentation, and revision.

Response:

For #1, I experimented with a big, dynamic, and textured painting, which I had not done before. I really liked pushing myself and trying spontaneous ideas. With every piece, through varied mark making (3,4,5,9,10), randomly deciding to add a pop of color (6,10), adding more personality and drawing more loosely (4,9). I revised my instinct to draw restrictively by allowing myself more freedom and openness to change as the work developed. Experimentation with various materials including eyeshadow (6), and drawing on 3D objects (13). Through trial and error I achieved artwork that I am proud of.



Image 1

Sustained Investigation

Height: 24

Width: 18

Depth: 0

Materials: Acrylic paint

Process(es):

First experience using acrylic paint. Lots of experimentation and trial and error.

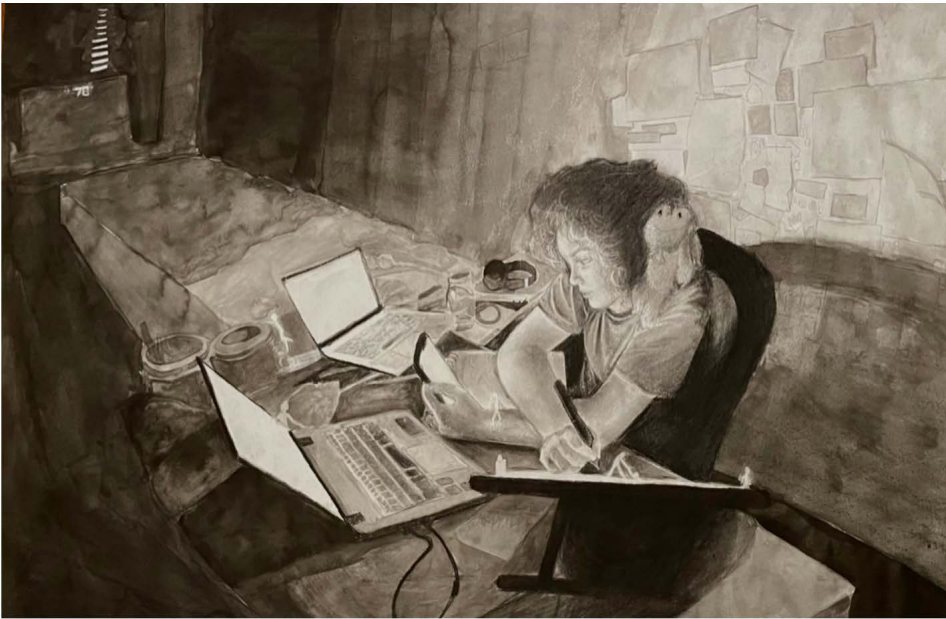


Image 2

Sustained Investigation

Height: 24

Width: 36

Depth: 0

Materials: Sumi ink Charcoal

Process(es):

I used the loose nature of ink to contrast with sharp clear lines to center, and pull focus to me.



Image 3

Sustained Investigation

Height: 40

Width: 30

Depth: 0

Materials: Acrylic paint Fabric paint

Process(es):

I took advantage of the unique marks I could make using a thick medium like acrylic paint.



Image 4

Sustained Investigation

Height: 24

Width: 30

Depth: 0

Materials: Acrylic paint

Process(es):

Using bright spontaneous strokes and mark-making, I captured movement and excitement.

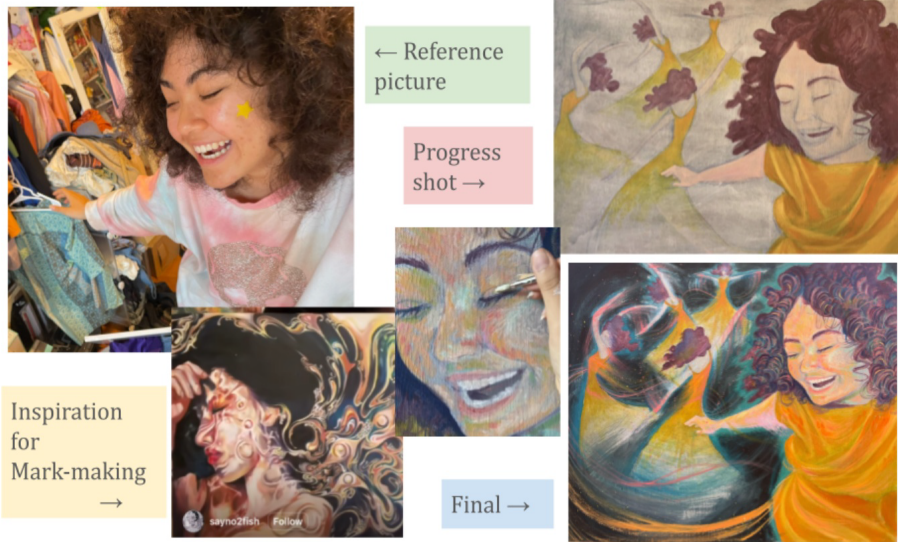


Image 5

Sustained Investigation

Height: na

Width: na

Depth: na

Materials: na

Process(es): Process slide of piece #4



Image 6

Sustained Investigation

Height: 24

Width: 36

Depth: 0

Materials: Colored pencil Eye shadow

Process(es):

Eyeshadow was used to capture a soft and delicate look. Took advantage of negative space and shape.



Image 7

Sustained Investigation

Height: 18

Width: 12

Depth: 0

Materials: Acrylic paint

Process(es):

Captured unique lighting using different opacities of acrylic paint. Improving fine details/texture.

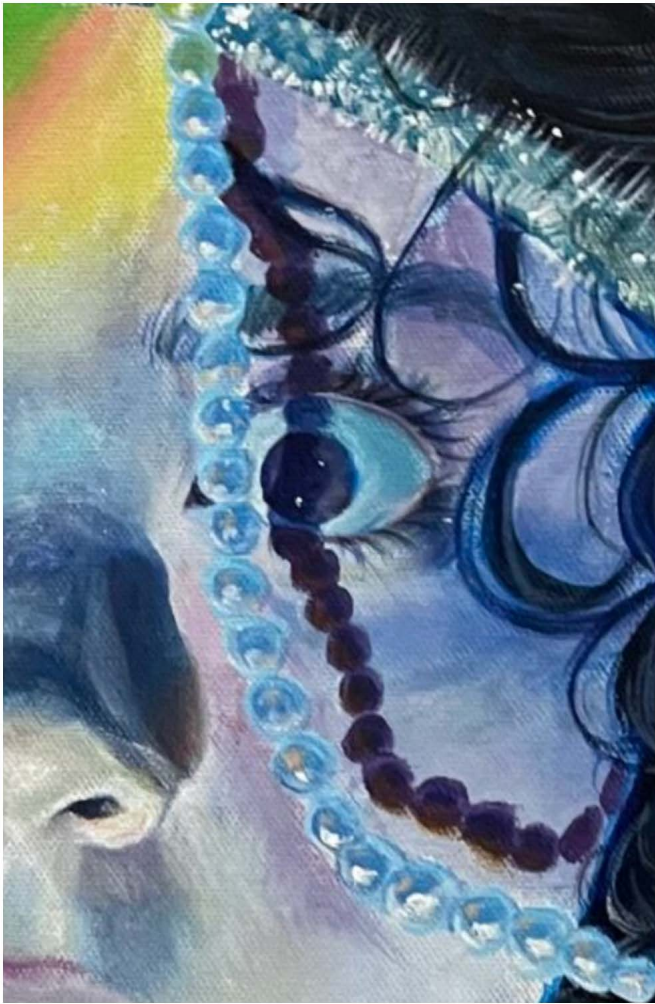


Image 8

Sustained Investigation

Height: na

Width: na

Depth: na

Materials: na

Process(es): Closeup of piece #7



Image 9

Sustained Investigation

Height: 20

Width: 30

Depth: 0

Materials: Acrylic paint

Process(es):

Contrast in light and color used to drive the flow of the piece.



Image 10

Sustained Investigation

Height: 24

Width: 30

Depth: 0

Materials: Acrylic paint Watercolor

Process(es):

Loose watered down acrylic paint contrasted with harsh dark paint. One medium can be used many ways.

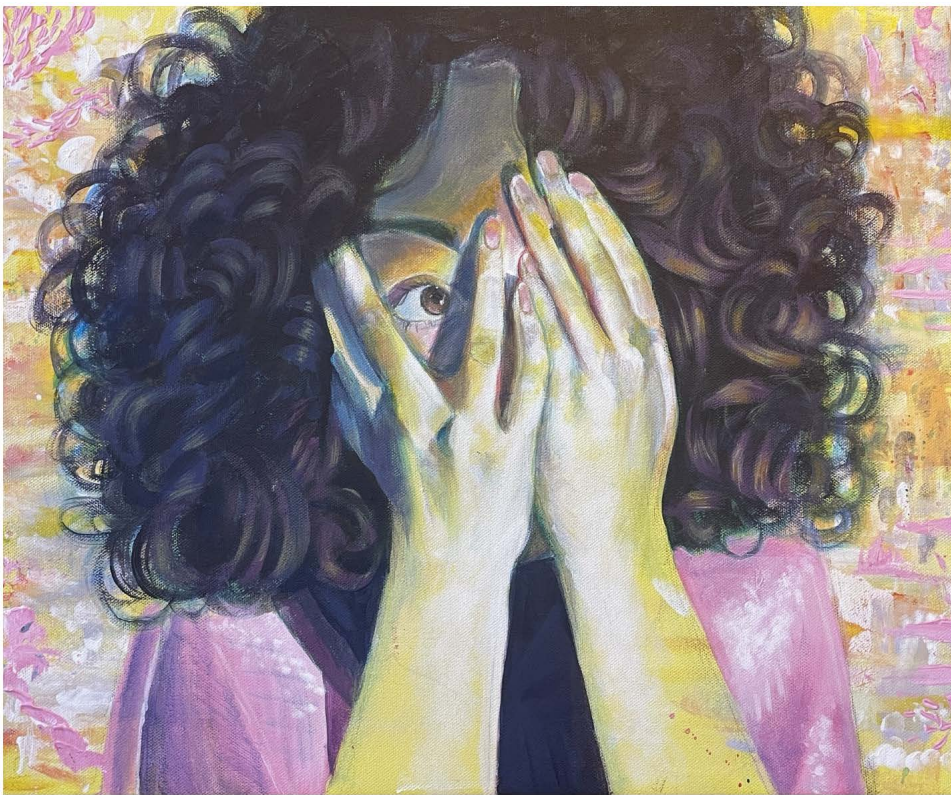


Image 11

Sustained Investigation

Height: 15

Width: 20

Depth: 0

Materials: Acrylic paint

Process(es):

Dynamic mark-making in the background. Lots of experimentation with color, and shadow.



Image 12

Sustained Investigation

Height: 24

Width: 36

Depth: 0

Materials: Acrylic paint Fabric paint

Process(es):

Mark-making used to convey change, and emotion. Light/color to draw attention.



Image 13

Sustained Investigation

Height: 9

Width: 6

Depth: 1

Materials:

Watercolor Cardstock Colored pencil

Process(es):

This is a "limited edition" doll of me. I currently enjoy watercolor, and chose to use it for me now



Image 14

Sustained Investigation

Height: 30

Width: 20

Depth: 0

Materials: Acrylic paint

Process(es):

Only focused on one person every time I worked on this, to push to show how different everyone is.

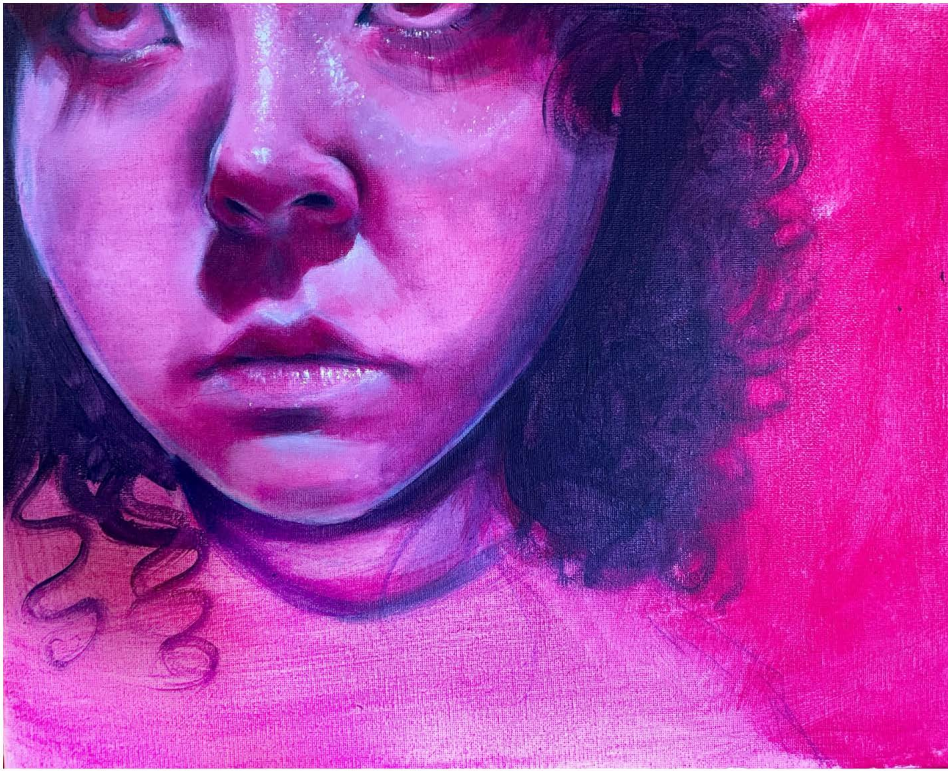


Image 15

Sustained Investigation

Height: 12

Width: 18

Depth: 0

Materials: Acrylic paint

Process(es):

Experimentation with color, focus on detail of face to draw attention.

Analytic Scoring Rubric Row A: Inquiry

Writing Prompt 1: *Identify the inquiry that guided your sustained investigation.*

1	2	3
Written evidence does not identify an inquiry.	Written evidence identifies an inquiry. AND Visual evidence demonstrates the inquiry.	Written evidence identifies an inquiry. AND Visual evidence demonstrates the inquiry. AND The inquiry guides the development of the sustained investigation.

Score Rationale

Written evidence identifies the inquiry as an attempt to reveal the evolution of individual personality “and passion for making art” through a series of self-portraits that exhibit the use of, and experimentation with, drawing skills and elements. While there is a clear relationship between the inquiry and the visual evidence, the inquiry fails to guide the development of the images. More information regarding what the artist sought to explore and discover in each image would have provided further guidance. In Image 6, eye shadow “was used to capture a soft and delicate look,” but there is no explanation of what aspect or phase of the “personal journey” is represented. On the other hand, the intent to “show how different everyone is” in Image 14 assists in understanding “the journey of becoming the person I am today.” Overall, the written evidence identifies an inquiry, and the visual evidence demonstrates the inquiry, which resulted in a score of 2.



Image 6



Image 14