



2024 AP[®] 2-D Art and Design

Sustained Investigation

Analytic Scoring Rubric and Score Rationale

Row C–Score 2

Written Evidence

Sustained Investigation

Identify the inquiry that guided your sustained investigation.

Response:

I intended to explore the concept of "paths," artificial and natural. From human-made paths to precipitation, movement (or the lack thereof) can form beautiful patterns when analyzed closely. Among infinite possibilities, we can learn so much from the vectors of life, from the path of the stars to the path of a beetle larva through the bark of a tree.

Describe ways your sustained investigation developed through practice, experimentation, and revision.

Response:

My original idea was to search for some semblance of unpredictability within paths, and I captured this in #1 with a machine-made product. I later decided to change focus to expand my definition, and some of my photos, like #4 and #7, include natural effects that are very predictable in their path. I also tried playing around with long exposures, looking at the movement of objects/people over time (e.g. #9). Image #15 is unique in that it is the only photo I digitally manipulated, intending to emulate M. C. Escher-esque ideas of infinite paths.



Image 1

Sustained Investigation

Height: 13

Width: 19

Materials: Digital image

Process(es): Photography



Image 2

Sustained Investigation

Height: 13

Width: 19

Materials: Digital image

Process(es): Photography

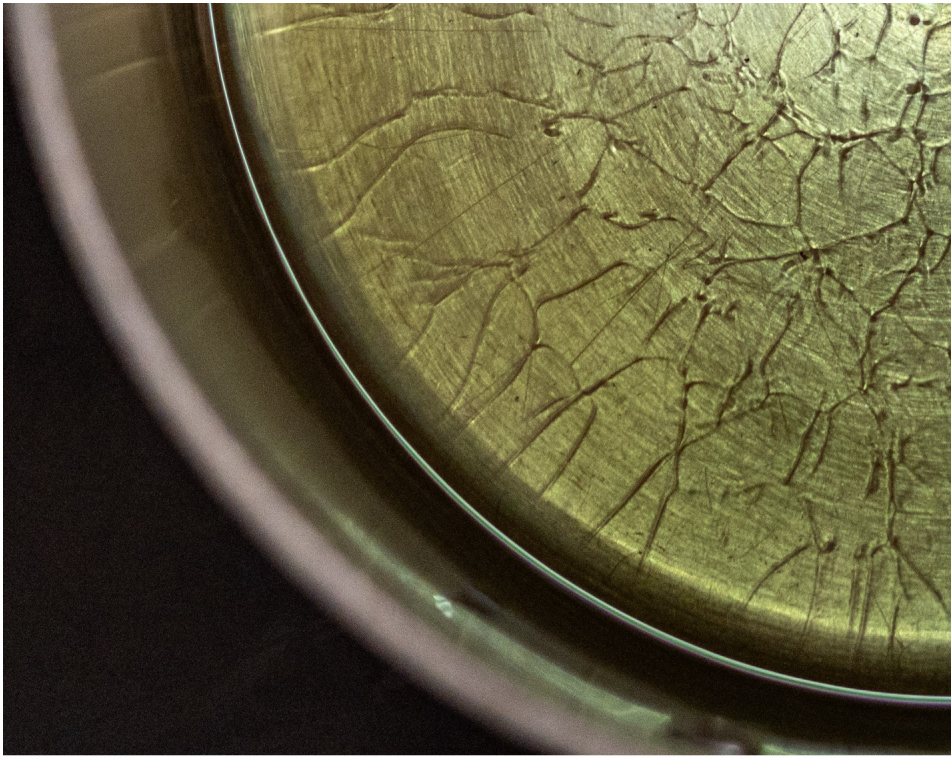


Image 3

Sustained Investigation

Height: 7.43

Width: 5.74

Materials: Digital image

Process(es): Photography



Image 4

Sustained Investigation

Height: 13

Width: 19

Materials: Digital image

Process(es): Photography



Image 5

Sustained Investigation

Height: 13

Width: 19

Materials: Digital image

Process(es): Photography



Image 6

Sustained Investigation

Height: 13

Width: 19

Materials: Digital image

Process(es): Photography



Image 7

Sustained Investigation

Height: 13

Width: 19

Materials: Digital image

Process(es): Photography



Image 8

Sustained Investigation

Height: 19

Width: 13

Materials: Digital image

Process(es): Photography



Image 9

Sustained Investigation

Height: 13

Width: 19

Materials: Digital image

Process(es): Photography



Image 10

Sustained Investigation

Height: 13

Width: 19

Materials: Digital image

Process(es): Photography



Image 11

Sustained Investigation

Height: 13

Width: 19

Materials: Digital image

Process(es): Photography

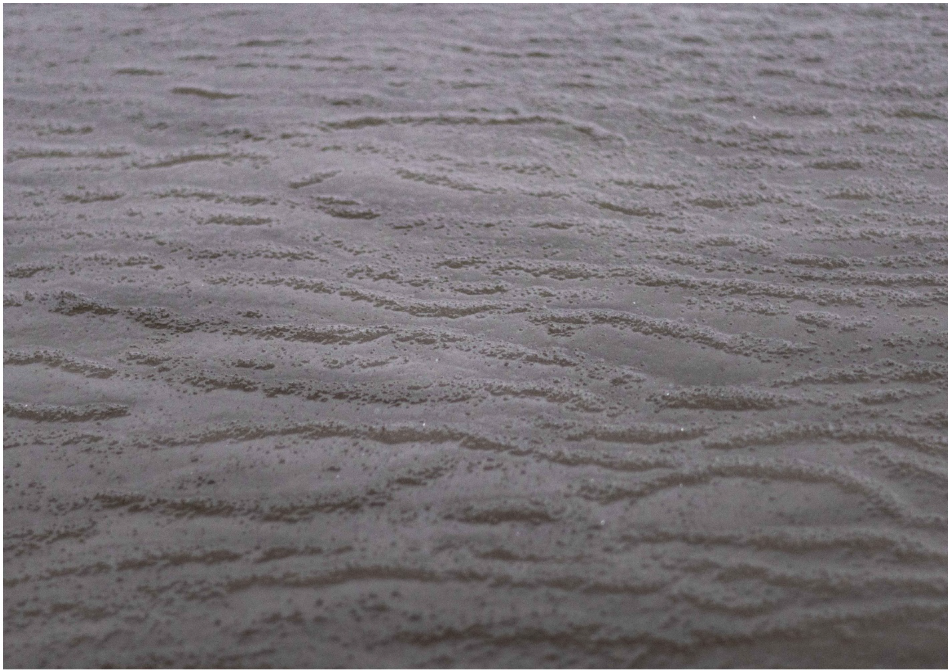


Image 12

Sustained Investigation

Height: 13

Width: 19

Materials: Digital image

Process(es): Photography



Image 13

Sustained Investigation

Height: 13

Width: 19

Materials: Digital image

Process(es): Photography



Image 14

Sustained Investigation

Height: 19

Width: 13

Materials: Digital image

Process(es): Photography



Image 15

Sustained Investigation

Height: 13

Width: 19

Materials: Digital image

Process(es): Photography, Photoshop

Analytic Scoring Rubric Row C: Materials, Processes, and Ideas

1	2	3
Little to no evidence of visual relationships among materials, processes, OR ideas.	Visual relationships among materials, processes, and ideas are evident .	Visual relationships among materials, processes, AND ideas are evident and demonstrate synthesis .

Score Rationale

The idea of observable artificial and natural paths visually relates to the materials (digital image) and processes (photography). All photographs are paths within landscapes, streets, and interior buildings, except for Image 1, which appears to be a path of woven thread.

The idea of the “path of the stars” is stated in Image 2, but the implied direction is not evident. Image 7 shows a closeup of a water flow in a small creek. The photo demonstrates perspective, and the path is clear. Light shimmers on the water to help provide emphasis. There is an attempt in Image 9 to combine both types of paths with limited success, with an overlapping of colorful artificial light swirls over a horizontal tree-lined silhouette. The stated process for this image is photography, but the intent of a path or path is indiscernible. Image 15 presents a “digitally manipulated photo intending to emulate M.C. Escher-esque ideas,” but adding the figure in the composition does not support “infinite paths.” The visual relationships among materials, processes, and ideas are evident; more explanation about material choices and physical and conceptual processes would aid intention, investigation, and analysis to reach synthesis.

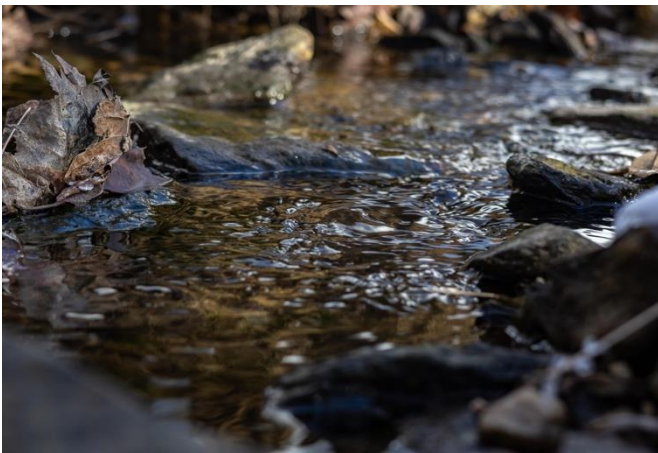


Image 7

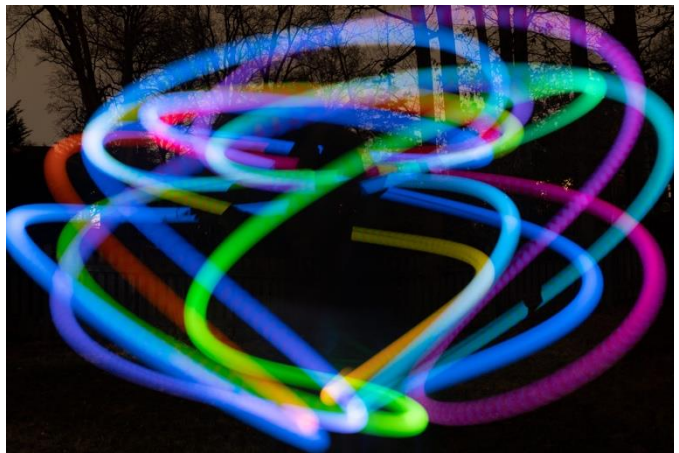


Image 9