



2024 AP[®] 2-D Art and Design

Sustained Investigation

Analytic Scoring Rubric and Score Rationale

Row B–Score 1

Written Evidence

Sustained Investigation

Identify the inquiry that guided your sustained investigation.

Response:

My theme of choice is "How can I expand my creativity while expressing emotions and explaining mental health through my art?" Throughout my portfolio I touch on topics such as eating disorders (1) manipulation (2&7) standing up for yourself (3&6) disorientation (5) hyper sexualization (8) escapism (9&11) conflicting thoughts (10&13) anxiety (12&15) relapse (14).

While making my pieces I try to use each individual theme to inspire the piece while still adding creative touches and learning new mediums while doing so.

Describe ways your sustained investigation developed through practice, experimentation, and revision.

Response:

My portfolio has been such an amazing journey of learning how I see art and what I enjoy most about my creative process. My goal was to learn how to express emotions. I believe I have grown in that department, though I've learned more than just that. I've learn that art isn't just a final product, but a feeling. I struggled at the beginning as I used to only care about the final outcome and if it looked bad or not, which usually ended up with me struggling even more during my process. Now I am able to draw freely and creatively without judgement of myself. Work 14 had opened my eyes the most.



Image 1

Sustained Investigation

Height: 5.5

Width: 8.5

Materials:

Paper, watercolor, alcohol markers,
colored pencil, pen, white out

Process(es):

I used contrast to show the difference of
how food is supposed to be and how it is
to the person.



Image 2

Sustained Investigation

Height: 16

Width: 12

Materials: Digital - Procreate

Process(es):

I experimented with different the brushes procreate has to offer to create a grey scale glitch.

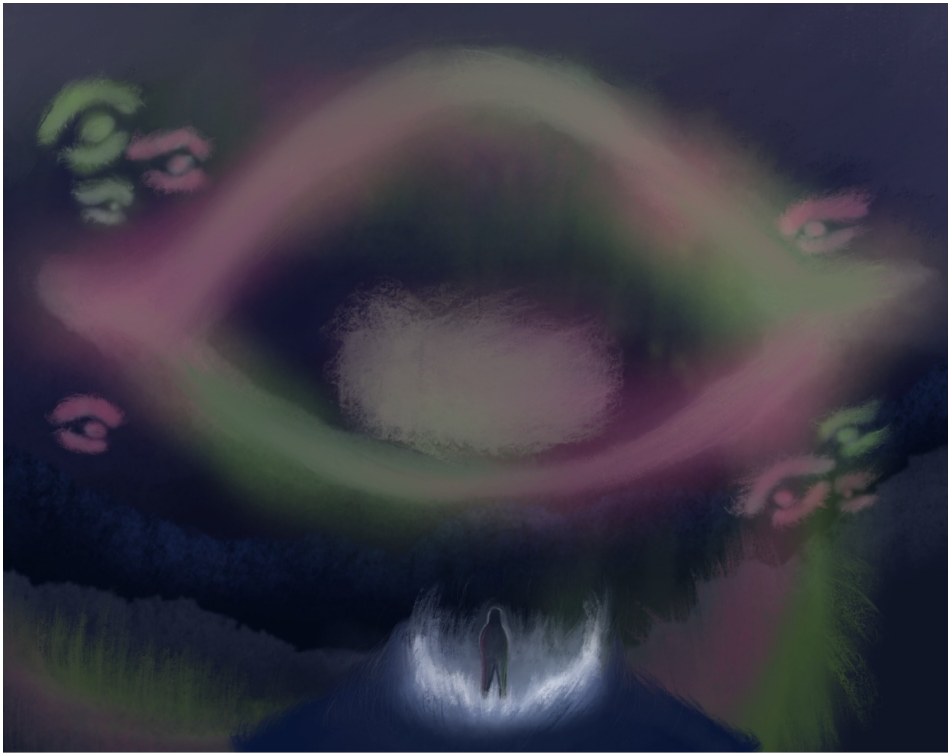


Image 3

Sustained Investigation

Height: 12

Width: 16

Materials: Digital - Procreate

Process(es):

Inspired by the aura lights, I wanted to create this intense scene to display confrontation.

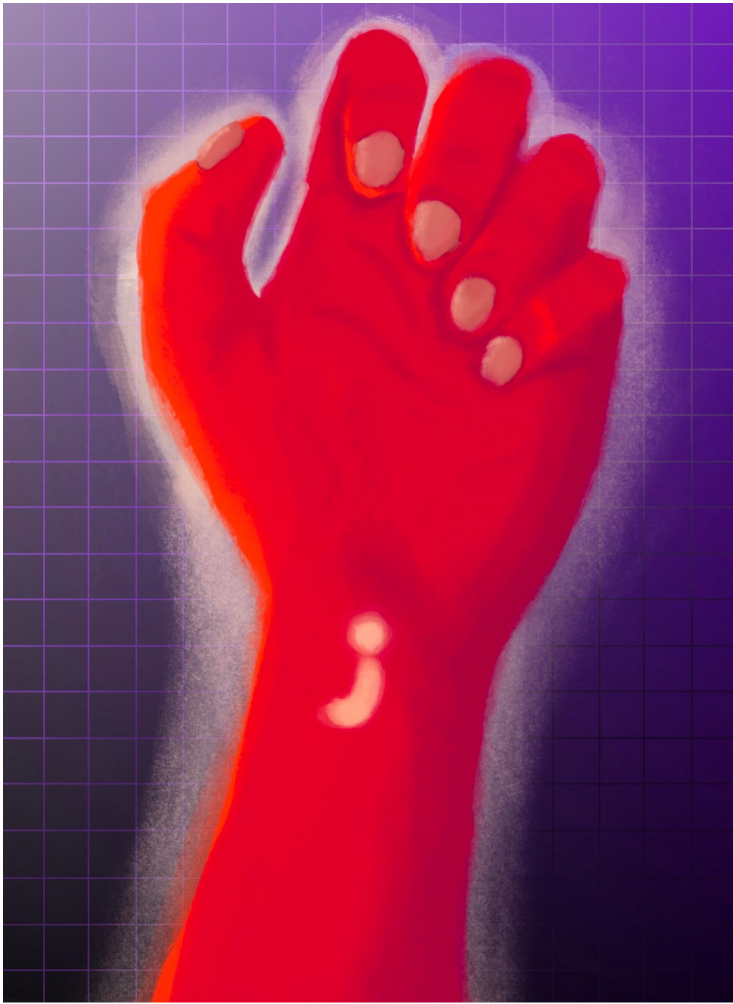


Image 4

Sustained Investigation

Height: 15.2

Width: 20.7

Materials: Digital - Procreate

Process(es):

The semicolon represents a second chance. I used a gradient to have the red pop off the screen.

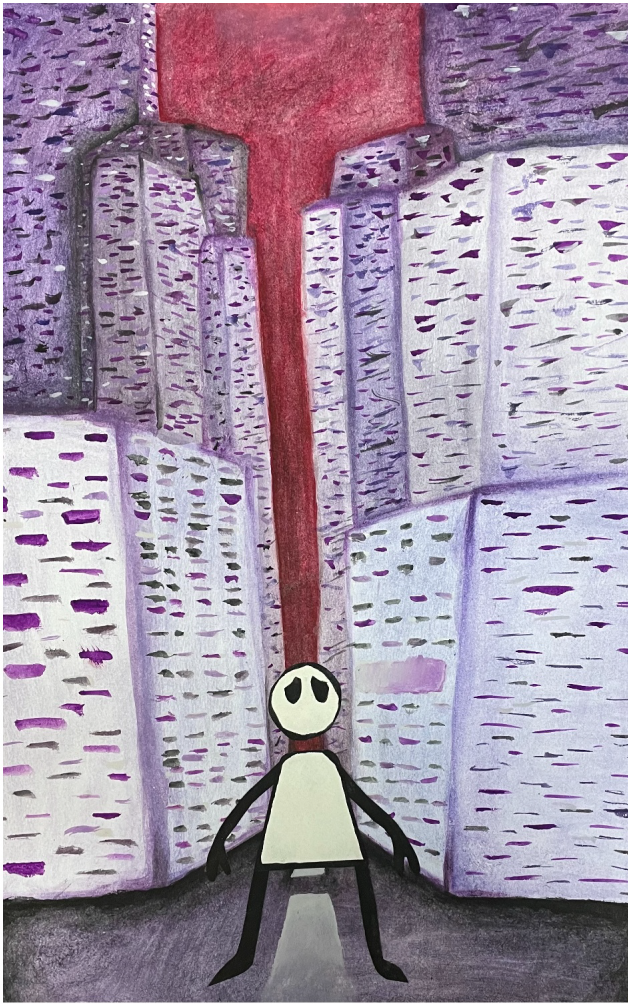


Image 5

Sustained Investigation

Height: 18

Width: 11

Materials: Water color, pen

Process(es):

Using only purple to create my scenery, I used a deep red in the sky to create a doom feeling.



Image 6

Sustained Investigation

Height: 10

Width: 12

Depth: 9

Materials:

Fabric, tissue, cardboard, paper, mod podge, paint, watercolor

Process(es):

I enjoyed experimenting with layering in a 3D model and using different textures to tell a story.



Image 7

Sustained Investigation

Height: 11

Width: 11

Materials: Colored pencil, watercolor

Process(es):

Using colored pencils for the first time, I messed with the textures and created depth doing so.



Image 8

Sustained Investigation

Height: 20

Width: 15

Materials:

Cardboard, hot glue, clay, acrylic paint

Process(es):

Modeling my clay into a body shape and creating eyes, I created an uncomfortable combination.



Image 9

Sustained Investigation

Height: 8

Width: 8.5

Materials:

Fabric, paper, cardboard, glue, oil pastels, watercolor

Process(es):

Layering paper, cardboard and fabric, I created a scene which is comfort and childish.



Image 10

Sustained Investigation

Height: 10

Width: 8

Materials: Acrylic Paint

Process(es):

Two opposite ideas, I used faces with water and lava behind them that are intertwined.



Image 11

Sustained Investigation

Height: 8.5

Width: 5.5

Materials:

Colored pens and alcohol markers

Process(es):

Creating a dream like state, I use light colors to make a comforting scene.



Image 12

Sustained Investigation

Height: 8.5

Width: 5.5

Materials: Acrylic paint

Process(es):

Walking through the halls with the feeling that everyone is staring at you.



Image 13

Sustained Investigation

Height: 8.5

Width: 5.5

Materials: Watercolor and pen

Process(es):

Words that were never spoken are
hidden by fear.



Image 14

Sustained Investigation

Height: 8.5

Width: 5.5

Materials:

Pen, paper, and white acrylic paint

Process(es):

Vines wrap her arms as a symbolism to self harm relapse. I layered pen and paint to create texture.



Image 15

Sustained Investigation

Height: 15.4

Width: 11.7

Materials: Digital - Procreate

Process(es):

A scene of a girl judging herself in a mirror, the cracks in the wall symbolizes of her self esteem.

Analytic Scoring Rubric Row B: Practice, Experimentation, and Revision

Writing Prompt 2: Describe ways your sustained investigation developed practice, experimentation, and revision.

1	2	3
Visual evidence of practice, experimentation, and revision does not relate to a sustained investigation.	Visual and written evidence of practice, experimentation, and revision relates to a sustained investigation.	Visual evidence of practice, experimentation, and revision demonstrates development of the sustained investigation. AND Written evidence describes ways the sustained investigation developed through practice, experimentation, and revision.

Score Rationale

This portfolio's visual evidence of practice, experimentation, and revision does not relate to a sustained investigation. The portfolio emphasizes "how to express emotions," but the visual evidence does not support the statement. For example, Image 7 states an intention to use "texture to create depth," exploring the topic of "manipulation." However, it is unclear how the visual evidence relates. Additionally, the idea in Image 5, "to create a doom feeling," does not relate to the visual evidence. The building structures and the figure in the middle contain little color and have limited value to express "doom."

Image 1 states that "contrast is used to show the difference of how food is supposed to be and how it is to the person," but there is little experimentation with the elements and principles of design to explore the idea.

The written evidence in the portfolio suggests an intent to "express emotions," but the visual evidence does not relate to a sustained investigation. Further, Writing Prompt 2 does not speak to ways practice, experimentation, and revision are used to relate or guide artmaking and achieved a score of 1 in Row B.

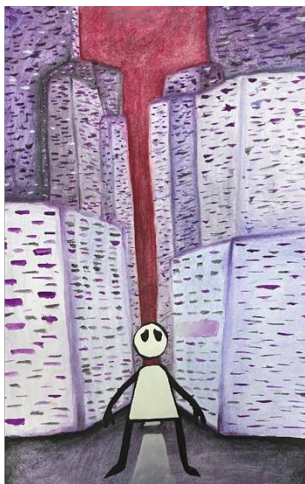


Image 5

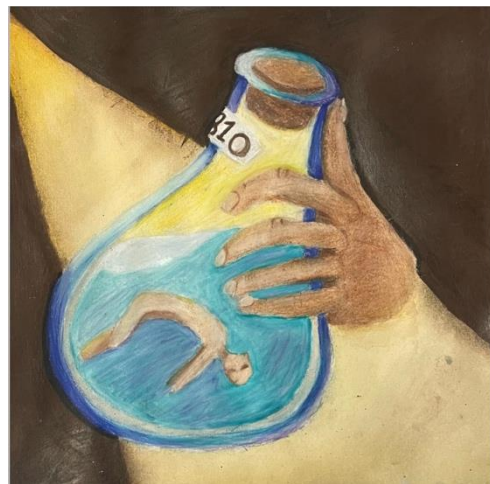


Image 7