

2023



AP[®] Physics 1: Algebra-Based Free-Response Questions

AP[®] PHYSICS 1 TABLE OF INFORMATION

CONSTANTS AND CONVERSION FACTORS

Proton mass, $m_p = 1.67 \times 10^{-27}$ kg Neutron mass, $m_n = 1.67 \times 10^{-27}$ kg Electron mass, $m_e = 9.11 \times 10^{-31}$ kg Speed of light, $c = 3.00 \times 10^8$ m/s	Electron charge magnitude, $e = 1.60 \times 10^{-19}$ C Coulomb's law constant, $k = 1/4\pi\epsilon_0 = 9.0 \times 10^9$ N·m ² /C ² Universal gravitational constant, $G = 6.67 \times 10^{-11}$ m ³ /kg·s ² Acceleration due to gravity at Earth's surface, $g = 9.8$ m/s ²
---	--

UNIT SYMBOLS	meter, m	kelvin, K	watt, W	degree Celsius, °C
	kilogram, kg	hertz, Hz	coulomb, C	
	second, s	newton, N	volt, V	
	ampere, A	joule, J	ohm, Ω	

PREFIXES		
Factor	Prefix	Symbol
10^{12}	tera	T
10^9	giga	G
10^6	mega	M
10^3	kilo	k
10^{-2}	centi	c
10^{-3}	milli	m
10^{-6}	micro	μ
10^{-9}	nano	n
10^{-12}	pico	p

VALUES OF TRIGONOMETRIC FUNCTIONS FOR COMMON ANGLES							
θ	0°	30°	37°	45°	53°	60°	90°
$\sin \theta$	0	1/2	3/5	$\sqrt{2}/2$	4/5	$\sqrt{3}/2$	1
$\cos \theta$	1	$\sqrt{3}/2$	4/5	$\sqrt{2}/2$	3/5	1/2	0
$\tan \theta$	0	$\sqrt{3}/3$	3/4	1	4/3	$\sqrt{3}$	∞

The following conventions are used in this exam.

- I. The frame of reference of any problem is assumed to be inertial unless otherwise stated.
- II. Assume air resistance is negligible unless otherwise stated.
- III. In all situations, positive work is defined as work done on a system.
- IV. The direction of current is conventional current: the direction in which positive charge would drift.
- V. Assume all batteries and meters are ideal unless otherwise stated.

AP[®] PHYSICS 1 EQUATIONS

MECHANICS

$$v_x = v_{x0} + a_x t$$

$$x = x_0 + v_{x0} t + \frac{1}{2} a_x t^2$$

$$v_x^2 = v_{x0}^2 + 2a_x(x - x_0)$$

$$\vec{a} = \frac{\sum \vec{F}}{m} = \frac{\vec{F}_{net}}{m}$$

$$|\vec{F}_f| \leq \mu |\vec{F}_n|$$

$$a_c = \frac{v^2}{r}$$

$$\vec{p} = m\vec{v}$$

$$\Delta\vec{p} = \vec{F} \Delta t$$

$$K = \frac{1}{2} m v^2$$

$$\Delta E = W = F_{\parallel} d = F d \cos \theta$$

$$P = \frac{\Delta E}{\Delta t}$$

$$\theta = \theta_0 + \omega_0 t + \frac{1}{2} \alpha t^2$$

$$\omega = \omega_0 + \alpha t$$

$$x = A \cos(2\pi f t)$$

$$\vec{\alpha} = \frac{\sum \vec{\tau}}{I} = \frac{\vec{\tau}_{net}}{I}$$

$$\tau = r_{\perp} F = r F \sin \theta$$

$$L = I\omega$$

$$\Delta L = \tau \Delta t$$

$$K = \frac{1}{2} I \omega^2$$

$$|\vec{F}_s| = k|\vec{x}|$$

$$U_s = \frac{1}{2} k x^2$$

$$\rho = \frac{m}{V}$$

a = acceleration

A = amplitude

d = distance

E = energy

f = frequency

F = force

I = rotational inertia

K = kinetic energy

k = spring constant

L = angular momentum

ℓ = length

m = mass

P = power

p = momentum

r = radius or separation

T = period

t = time

U = potential energy

V = volume

v = speed

W = work done on a system

x = position

y = height

α = angular acceleration

μ = coefficient of friction

θ = angle

ρ = density

τ = torque

ω = angular speed

$$\Delta U_g = mg \Delta y$$

$$T = \frac{2\pi}{\omega} = \frac{1}{f}$$

$$T_s = 2\pi \sqrt{\frac{m}{k}}$$

$$T_p = 2\pi \sqrt{\frac{\ell}{g}}$$

$$|\vec{F}_g| = G \frac{m_1 m_2}{r^2}$$

$$\vec{g} = \frac{\vec{F}_g}{m}$$

$$U_G = -\frac{G m_1 m_2}{r}$$

GEOMETRY AND TRIGONOMETRY

Rectangle

$$A = bh$$

Triangle

$$A = \frac{1}{2} bh$$

Circle

$$A = \pi r^2$$

$$C = 2\pi r$$

Rectangular solid

$$V = \ell wh$$

Cylinder

$$V = \pi r^2 \ell$$

$$S = 2\pi r \ell + 2\pi r^2$$

Sphere

$$V = \frac{4}{3} \pi r^3$$

$$S = 4\pi r^2$$

A = area

C = circumference

V = volume

S = surface area

b = base

h = height

ℓ = length

w = width

r = radius

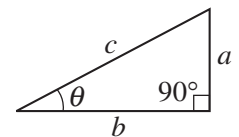
Right triangle

$$c^2 = a^2 + b^2$$

$$\sin \theta = \frac{a}{c}$$

$$\cos \theta = \frac{b}{c}$$

$$\tan \theta = \frac{a}{b}$$



Begin your response to **QUESTION 1** on this page.

PHYSICS 1

SECTION II

Time—1 hour and 30 minutes

5 Questions

Directions: Questions 1, 4, and 5 are short free-response questions that require about 13 minutes each to answer and are worth 7 points each. Questions 2 and 3 are long free-response questions that require about 25 minutes each to answer and are worth 12 points each. Show your work for each part in the space provided after that part.

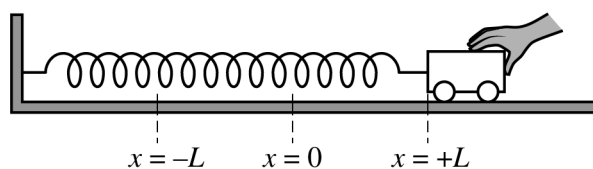


Figure 1

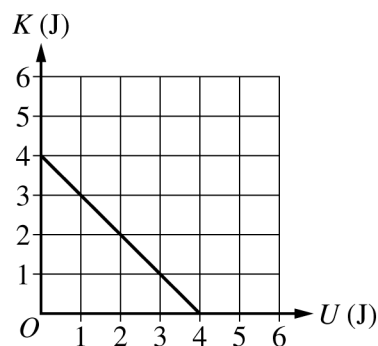


Figure 2

1. (7 points, suggested time 13 minutes)

A cart on a horizontal surface is attached to a spring. The other end of the spring is attached to a wall. The cart is initially held at rest, as shown in Figure 1. When the cart is released, the system consisting of the cart and spring oscillates between the positions $x = +L$ and $x = -L$. Figure 2 shows the kinetic energy of the cart-spring system as a function of the system's potential energy. Frictional forces are negligible.

(a) On the graph of kinetic energy K versus potential energy U shown in Figure 2, the values for the x -intercept and y -intercept are the same. Briefly explain why this is true, using physics principles.

GO ON TO THE NEXT PAGE.

Continue your response to **QUESTION 1** on this page.

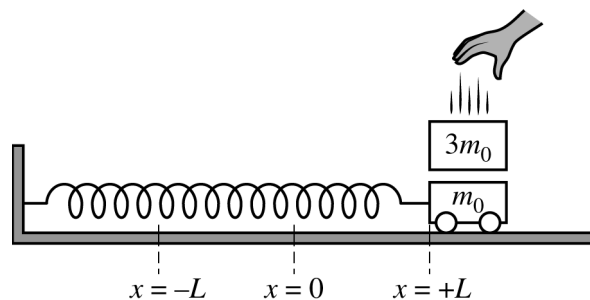


Figure 3

When the cart is at $+L$ and momentarily at rest, a block is dropped onto the cart, as shown in Figure 3. The block sticks to the cart, and the block-cart-spring system continues to oscillate between $-L$ and $+L$. The masses of the cart and the block are m_0 and $3m_0$, respectively.

(b) The frequency of oscillation before the block is dropped onto the cart is f_1 . The frequency of oscillation after

the block is dropped onto the cart is f_2 . Calculate the numerical value of the ratio $\frac{f_2}{f_1}$.

GO ON TO THE NEXT PAGE.

Continue your response to **QUESTION 1** on this page.

- (c) The dashed line in Figure 4 shows the kinetic energy K versus potential energy U of the block-cart-spring system after the block is dropped onto the cart. This graph is identical to the graph shown in Figure 2 for the cart-spring system before the block is dropped onto the cart.

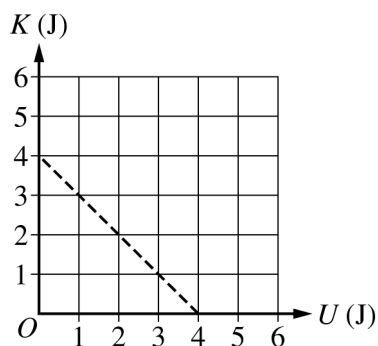
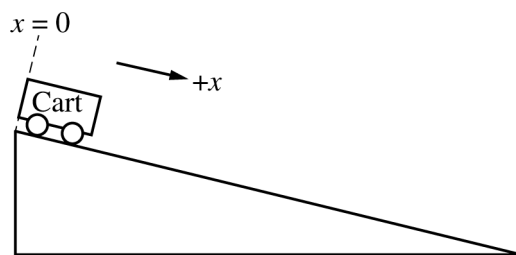


Figure 4

- i. Briefly explain why the two graphs must be the same, using physics principles.
- ii. After the block is dropped onto the cart, consider a system that consists only of the cart and the spring. On Figure 4, sketch a solid line that shows the kinetic energy of the system that consists of the cart and the spring but not the block after the block is dropped onto the cart.

GO ON TO THE NEXT PAGE.

Begin your response to **QUESTION 2** on this page.



2. (12 points, suggested time 25 minutes)

- (a) Students conduct an experiment to determine the acceleration a of a cart. The cart is released from rest at the top of the ramp at time $t = 0$ and moves down the ramp. The x -axis is defined to be parallel to the ramp with its origin at the top, as shown in the figure. The students collect the data shown in the following table.

	Position x (m)	Time t (s)	
	0.06	0.39	
	0.14	0.59	
	0.24	0.77	
	0.37	0.96	
	0.55	1.20	

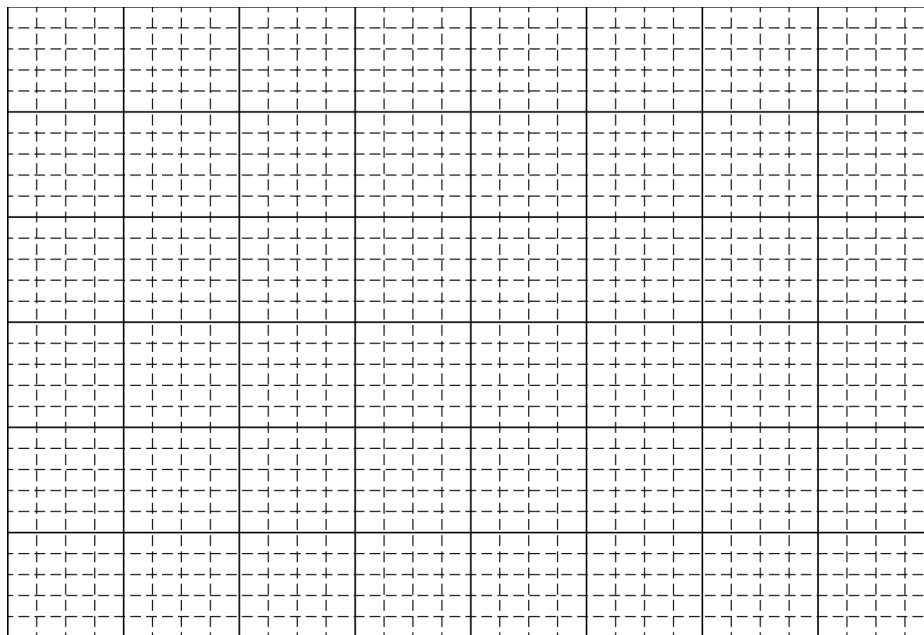
- i. Indicate which quantities could be graphed to yield a straight line whose slope could be used to determine the acceleration a of the cart. You may use the remaining columns in the table, as needed, to record any quantities (including units) that are not already in the table.

Vertical axis: _____ Horizontal axis: _____

GO ON TO THE NEXT PAGE.

Continue your response to **QUESTION 2** on this page.

- ii. On the following grid, plot the appropriate quantities to create a graph that can be used to determine the acceleration a of the cart as it rolls down the ramp. Clearly scale and label all axes (including units), as appropriate. Draw a straight line that best represents the data.

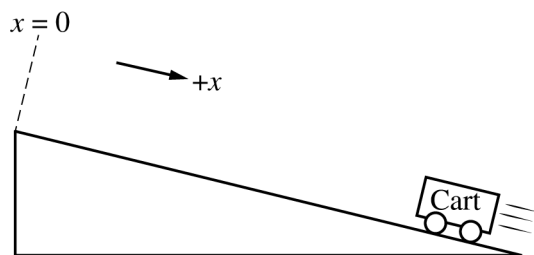


- iii. Using the line you drew in part (a)(ii), calculate an experimental value for the acceleration a of the cart as it rolls down the ramp.
- (b) The students are asked to determine an experimental value for the acceleration due to gravity g_{exp} using their data.
- What additional quantities do the students need to measure in order to calculate g_{exp} from a ?
 - Write an expression for the value of g_{exp} in terms of a .

GO ON TO THE NEXT PAGE.

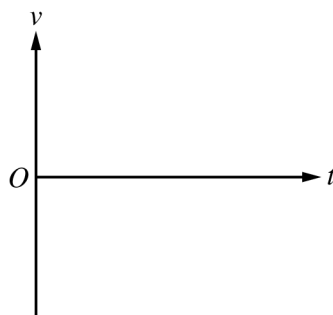
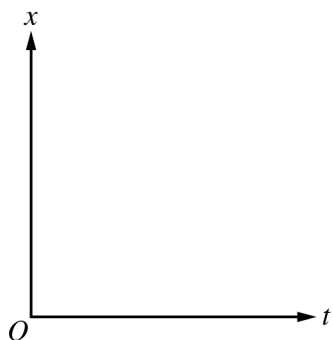
Continue your response to **QUESTION 2** on this page.

- (c) The students calculate the value of g_{exp} to be significantly lower than the accepted value of 9.8 m/s^2 .
- What is a physical reason, other than friction or air resistance, that could lead to a significant difference in the experimentally determined value of g_{exp} ?
 - Briefly explain how the physical reason you identified in part (c)(i) would lead to the decrease in the experimentally determined value of g_{exp} .



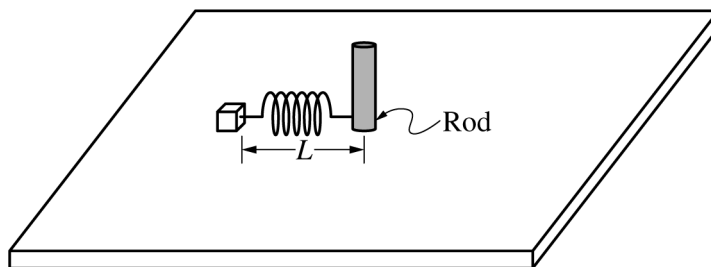
The students want to confirm that the acceleration is the same whether the cart rolls up or down the ramp. The students start the cart at the bottom and give the cart a quick push so that it rolls up the ramp and momentarily comes to rest. The x -axis is still defined to be parallel to the ramp with the origin at the top.

- (d) On the following graphs, sketch the position x and velocity v as functions of time t that correspond to the scenario shown while the cart moves up the ramp.



GO ON TO THE NEXT PAGE.

Begin your response to **QUESTION 3** on this page.



3. (12 points, suggested time 25 minutes)

A small block of mass m_0 is attached to the end of a spring of spring constant k_0 that is attached to a rod on a horizontal table. The rod is attached to a motor so that the rod can rotate at various speeds about its axis. When the rod is not rotating, the block is at rest and the spring is at its unstretched length L , as shown. All frictional forces are negligible.

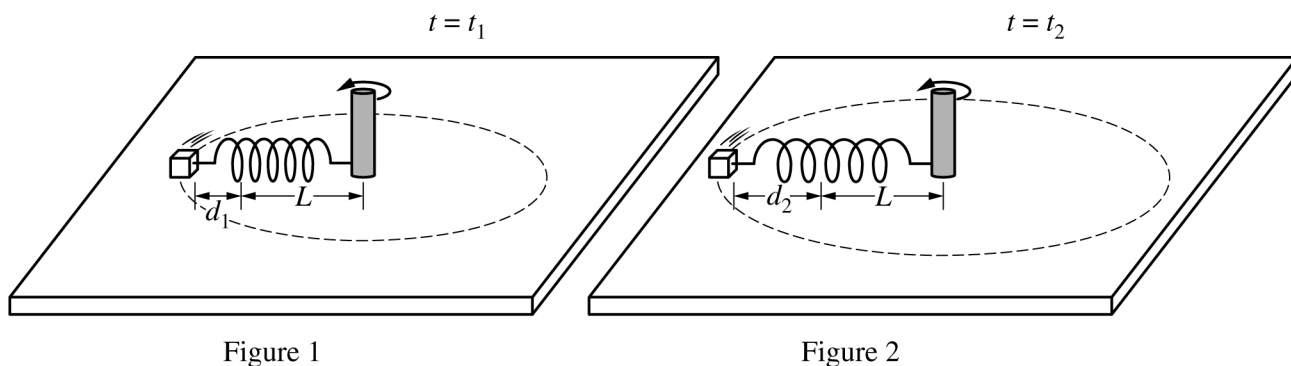


Figure 1

Figure 2

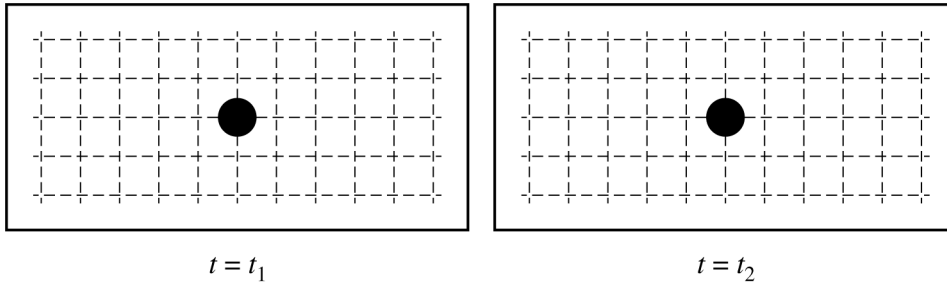
- (a) At time $t = t_1$, the rod is spinning such that the block moves in a circular path with a constant tangential speed v_1 and the spring is stretched a distance d_1 from the spring's unstretched length, as shown in Figure 1. At time $t = t_2$, the rod is spinning such that the block moves in a circular path with a constant tangential speed v_2 and the spring is stretched a distance d_2 from the spring's unstretched length, where $d_2 > d_1$, as shown in Figure 2.

GO ON TO THE NEXT PAGE.

Continue your response to **QUESTION 3** on this page.

i. On the following dots, which represent the block at the locations shown in Figure 1 and Figure 2, draw the force that is exerted on the block by the spring at times $t = t_1$ and $t = t_2$. The spring force must be represented by a distinct arrow starting on, and pointing away from, the dot.

Note: Draw the relative lengths of the vectors to reflect the relative magnitudes of the forces exerted by the spring at both times.



ii. Referencing d_1 and d_2 , describe your reasoning for drawing the arrows the length that you did in part (a)(i).

iii. Is the tangential speed v_1 of the block at time $t = t_1$ greater than, less than, or equal to the tangential speed v_2 of the block at time $t = t_2$?

_____ $v_1 > v_2$ _____ $v_1 < v_2$ _____ $v_1 = v_2$

Justify your answer without using equations.

GO ON TO THE NEXT PAGE.

Continue your response to **QUESTION 3** on this page.

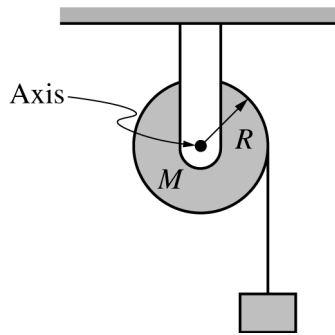
- (b) Consider a scenario where the block travels in a circular path where the spring is stretched a distance d from its unstretched length L .
- Determine an expression for the magnitude of the net force F_{net} exerted on the block. Express your answer in terms of m_0 , k_0 , L , d , and fundamental constants, as appropriate.

 - Derive an equation for the tangential speed v of the block. Express your answer in terms of m_0 , k_0 , L , d , and fundamental constants, as appropriate.
- (c) Does your equation for the tangential speed v of the block from part (b)(ii) agree with your reasoning from part (a) ?

___ Yes ___ No

Explain your reasoning.

GO ON TO THE NEXT PAGE.

Begin your response to **QUESTION 4** on this page.

4. (7 points, suggested time 13 minutes)

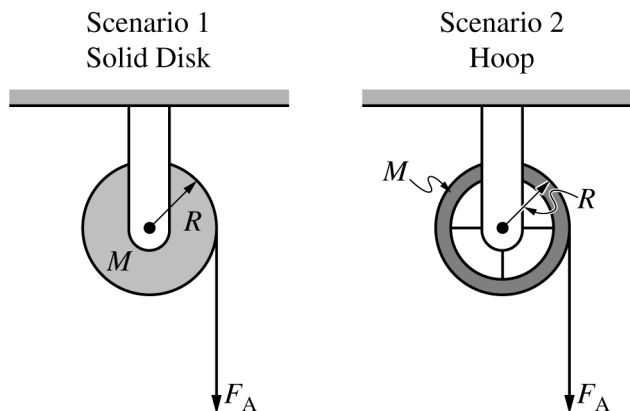
A block of unknown mass is attached to a long, lightweight string that is wrapped several turns around a pulley mounted on a horizontal axis through its center, as shown. The pulley is a uniform solid disk of mass M and radius R . The rotational inertia of the pulley is described by the equation $I = \frac{1}{2}MR^2$. The pulley can rotate about its center with negligible friction. The string does not slip on the pulley as the block falls.

When the block is released from rest and as the block travels toward the ground, the magnitude of the tension exerted on the block by the string is F_T .

(a) Determine an expression for the magnitude of the angular acceleration α_D of the disk as the block travels downward. Express your answer in terms of M , R , F_T , and physical constants as appropriate.

GO ON TO THE NEXT PAGE.

Continue your response to **QUESTION 4** on this page.



Scenarios 1 and 2 show two different pulleys. In Scenario 1, the pulley is the same solid disk referenced in part (a). In Scenario 2, the pulley is a hoop that has the same mass M and radius R as the disk. Each pulley has a lightweight string wrapped around it several turns and is mounted on a horizontal axle, as shown. Each pulley is free to rotate about its center with negligible friction.

In both scenarios, the pulleys begin at rest. Then both strings are pulled with the same constant force F_A for the same time interval Δt , causing the pulleys to rotate without the string slipping. After time interval Δt , the change in angular momentum of the disk is equal to the change in angular momentum of the hoop, but the change in rotational kinetic energy for the disk is greater than that of the hoop.

- (b) Consider scenarios 1 and 2 at the end of time interval Δt . In a clear, coherent paragraph-length response that may also contain equations and drawings, explain why the change in angular momentum of both pulleys is the same but the change in rotational kinetic energy is greater for the disk.

GO ON TO THE NEXT PAGE.

Begin your response to **QUESTION 5** on this page.

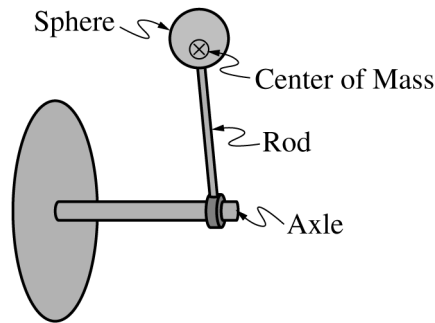


Figure 1

5. (7 points, suggested time 13 minutes)

A rod with a sphere attached to the end is connected to a horizontal mounted axle and carefully balanced so that it rests in a position vertically upward from the axle. The center of mass of the rod-sphere system is indicated with a \otimes , as shown in Figure 1. The sphere is lightly tapped, and the rod-sphere system rotates clockwise with negligible friction about the axle due to the gravitational force.

A student takes a video of the rod rotating from the vertically upward position to the vertically downward position. Figure 2 shows five frames (still shots) that the student selected from the video.

Note: these frames are not equally spaced apart in time.

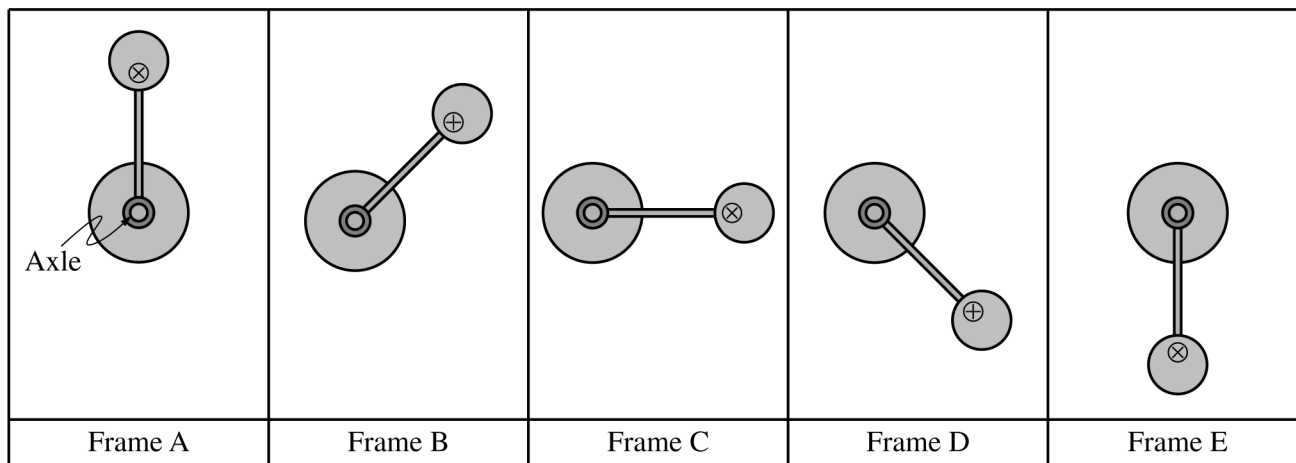


Figure 2

GO ON TO THE NEXT PAGE.

Continue your response to **QUESTION 5** on this page.

(a) Use the frames of the video shown in Figure 2 to answer the following questions.

i. In which frame is the angular acceleration of the rod-sphere system the greatest? Justify your answer.

ii. In which frame is the rotational kinetic energy of the rod-sphere system the greatest? Briefly justify your answer.

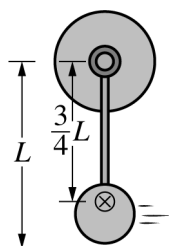


Figure 3

(b) The rod-sphere system has mass M and length L , and the center of mass is located a distance $\frac{3}{4}L$ from the axle, shown in Figure 3.

i. Derive an expression for the change in kinetic energy of the rod-sphere-Earth system from the moment shown in Frame A to the moment shown in Frame E. Express your answer in terms of M , L , and fundamental constants, as appropriate.

ii. Briefly explain why the rod and sphere gain kinetic energy, even if Earth is not included in the system.

GO ON TO THE NEXT PAGE.

STOP

END OF EXAM