

AP Drawing Portfolio

Sustained Investigation
Row C–Score 1



Image 1

Sustained Investigation

Height: 9 inches

Width: 6 inches

Material(s): Use procreate to collage references and create a scenery/lazy of sketching to show ponte las pilas

Process(es): Drawing references, easily moved, organized but using tech is seen as no doing anything



Image 2

Sustained Investigation

Height: 7 inches

Width: 12 inches

Material(s): Pen for immovable mother attitude and strictness, pencil for flowing and changeable young girl

Process(es): Batteries were drawn coming out of back, ponte las pilas was engraved to me to push me further

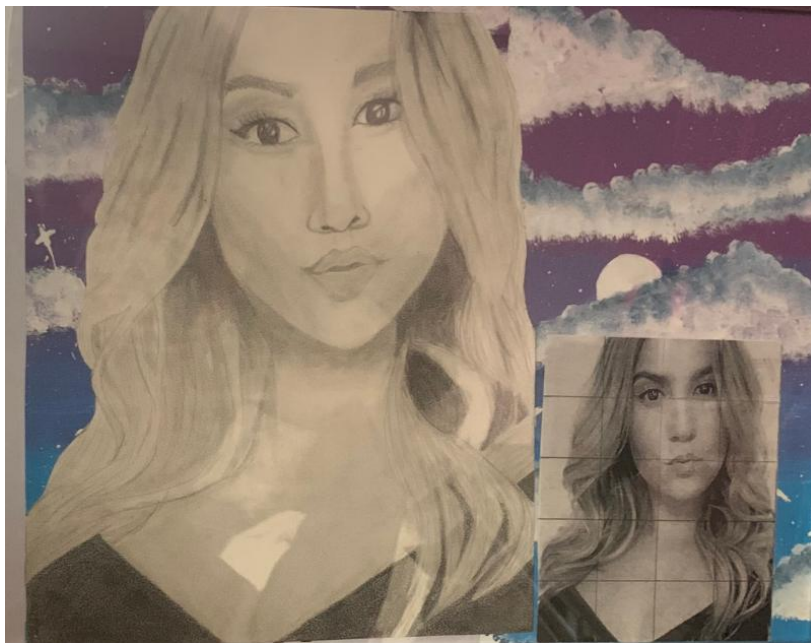


Image 3

Sustained Investigation

Height: 4 inches

Width: 4 inches

Material(s): pencil to show how detail and thought out her placement

Process(es): the idea of having to surpass my sisters successes to meet my parents expectations

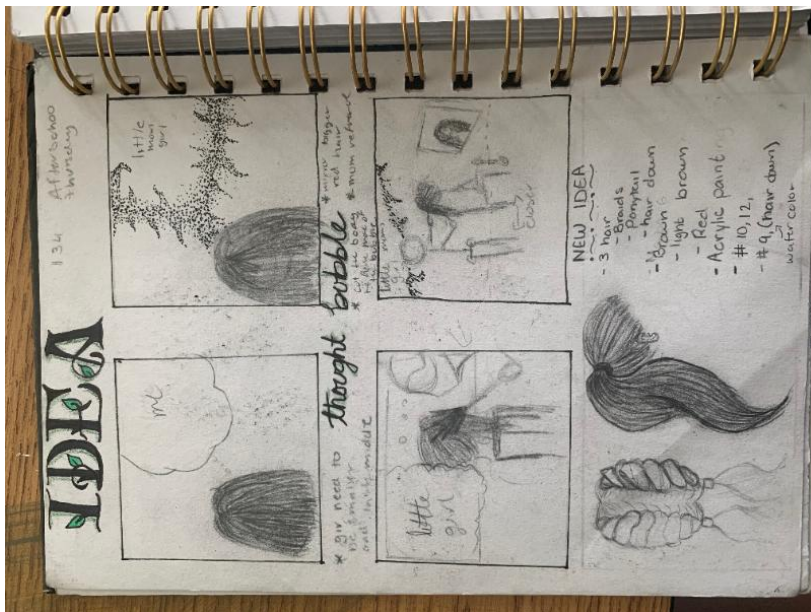


Image 4

Sustained Investigation

Height: 5 inches

Width: 8.5 inches

Material(s): pencil to relate to change and connection between hair and meaning

Process(es): Sketching out ideas that relate to each other through a disagreement between parent and child



Image 5

Sustained Investigation

Height: 8.5 inches

Width: 11 inches

Material(s): Gouache for precise highlights and texture

Process(es): the desired hair larger and in more vibrancy than the suggested styles
Many layers of lines, shadows



Image 6

Sustained Investigation

Height: 5 inches

Width: 8.5 inches

Material(s): Gouache for highlights and pop of color
using a pencil to show the truth and power of mother

Process(es): Using the red hair as a symbol to show connection between piece 4 but also a story of hope

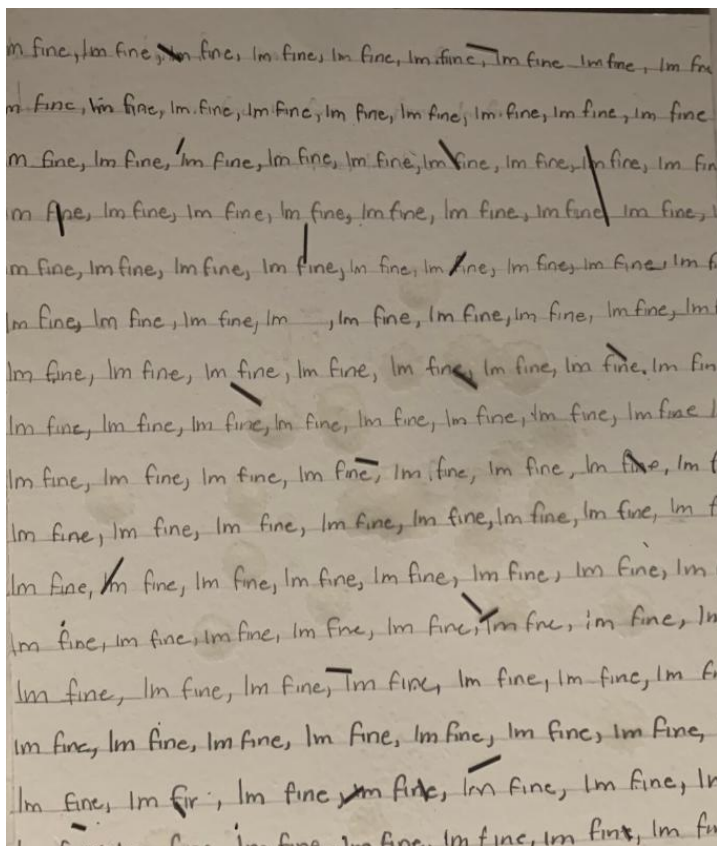


Image 7

Sustained Investigation

Height: 10 inches

Width: 9 inches

Material(s): sing pencil to represent a person and repeating Im fine

Process(es): Using a pencil with different forces showing the expectation the parents place on their child/ break



Image 8

Sustained Investigation

Height: 4 inches

Width: 4 inches

Material(s): using watercolor to show i different perspective and feel to

Process(es): connecting piece 12 to this one with a new look to it. a new way of looking at a picture

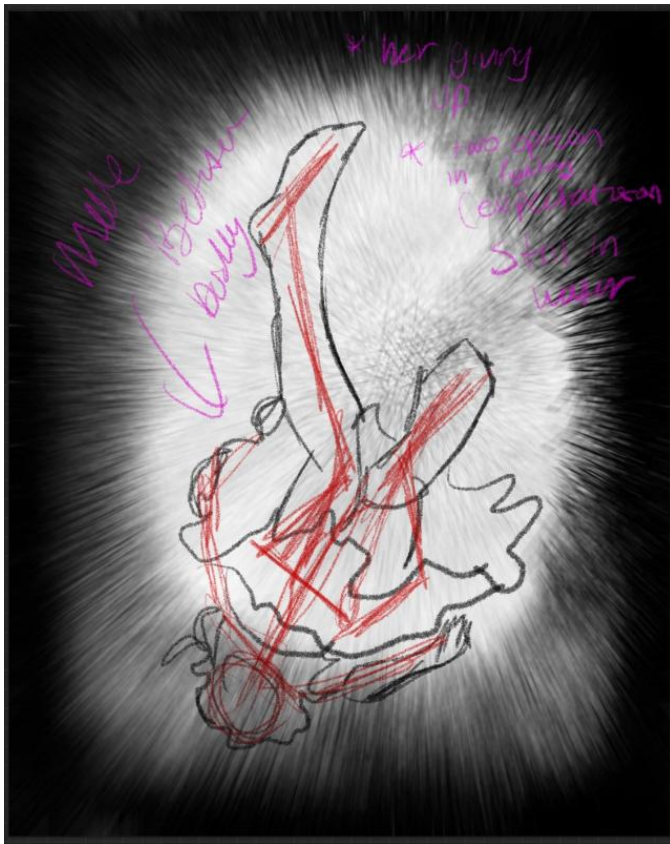


Image 9

Sustained Investigation

Height: 9 inches

Width: 6 inches

Material(s): I use procreate to execute the idea in my head

Process(es): To experiment with different perspectives of piece number 12



Image 10

Sustained Investigation

Height: 9 inches

Width: 6 inches

Material(s): I use procreate to execute the idea in my head

Process(es): the idea of drowning under exceptions and not being able to get away



Image 11

Sustained Investigation

Height: 1 inches

Width: 1 inches

Material(s): using a pencil to show chains holding her down and not letting her breath

Process(es): using the hurtful comments her mom tells her to keep her down and unable to get away.

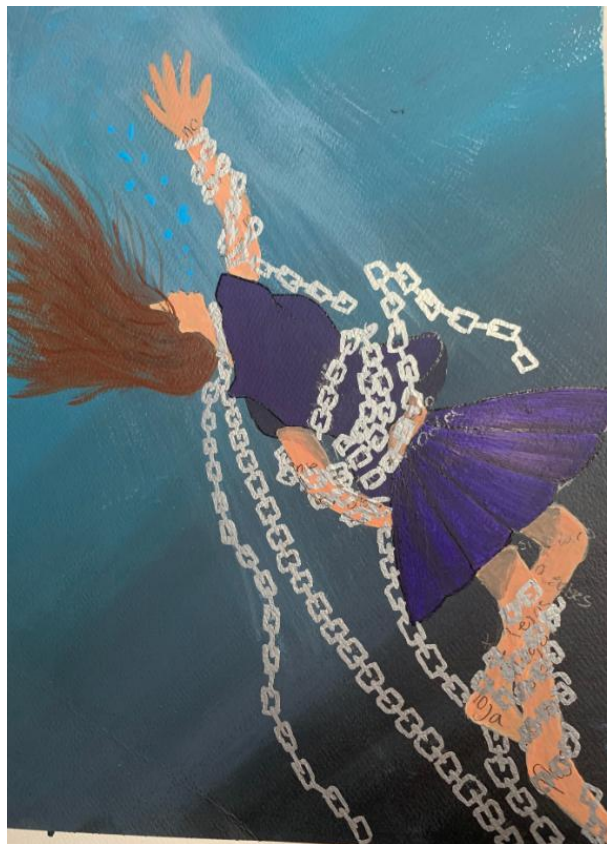


Image 12

Sustained Investigation

Height: 11 inches

Width: 8 inches

Material(s): watercolors used to show flowing strokes and marker as set and stone chains

Process(es): not being able to get away and drowning under pressure from expectations that are too much to handle



Image 13

Sustained Investigation

Height: 11 inches

Width: 11 inches

Material(s): Color pencil used to show transparency when switching between LED lights

Process(es): used reference, layered two colors on top of each other with pose in embrace



Image 14

Sustained Investigation

Height: 11 inches

Width: 11 inches

Material(s): red color pencil showing in blue LED. The side of her that tries to help herself through the pain

Process(es): layered two colors on top of each other and switching lights to show the side that shes alone/broken



Image 15

Sustained Investigation

Height: 11 inches

Width: 11 inches

Material(s): Blue color pencil showing in red LED. The side of her that her mom wants

Process(es): layered two colors on top of each other and switching lights to show the side her mother sees

Written Evidence

Sustained Investigation

1. Identify the question(s) or inquiry that guided your sustained investigation.
2. Describe how your sustained investigation shows evidence of practice, experimentation, and revision guided by your question(s) or inquiry.

Response 1:

What are the stressors and expectations Hispanic parents place on their children physically and mentally through their young age.

Response 2:

Using piece 1,2, and 3 you can see the mental state the children go through with the pressure and in 4 and 5 the physical restriction children have along with metal blocked placed by the parent. showing experiment from different points of view or connection through major ideas

Sustained Investigation: Analytic Scoring Rubric and Score Rationale

Row C–Score 1

Analytic Scoring Rubric Row C: Materials, Processes, and Ideas		
1	2	3
Little to no evidence of visual relationships among materials, processes, OR ideas.	Visual relationships among materials, processes, OR ideas are evident .	Visual relationships among materials, processes, AND ideas are clearly evident and demonstrate synthesis .

Score Rationale

This portfolio demonstrates little to no evidence of visual relationships among materials, processes, or ideas. The written evidence states, "What are the stressors and expectations Hispanic parents place on their children physically and mentally through their young age." However, the images show no visual relationships between materials, processes, and ideas. For example, image 3's written evidence describes "the idea of having to surpass my sister's successes to meet my parents expectations." It juxtaposes a cloudscape with portraiture, but the materials and processes do not unite surface applications or the use of light and shade. The centered, static composition does not relate to the emotional weight of the idea. In image 4, practice hair renderings creating "vibrancy" are moderately successful, but the red contrasts in image 5 do not communicate "red hair as a symbol to show connection."

Images 8, 11, and 12 depict the idea of using representational and symbolic chains encasing a figure to "keep her down" and show "drowning under pressure," but an insufficient depiction of form and space shows unclear relationships between the figures and objects. Furthermore, the additional process of adding background gradients does little to enhance space and enhances the uninformed use of acrylic paints. Overall, there is no sustained use of media throughout the portfolio, and there is little connection to process or idea, so this portfolio scores a 1 for Row C.

T

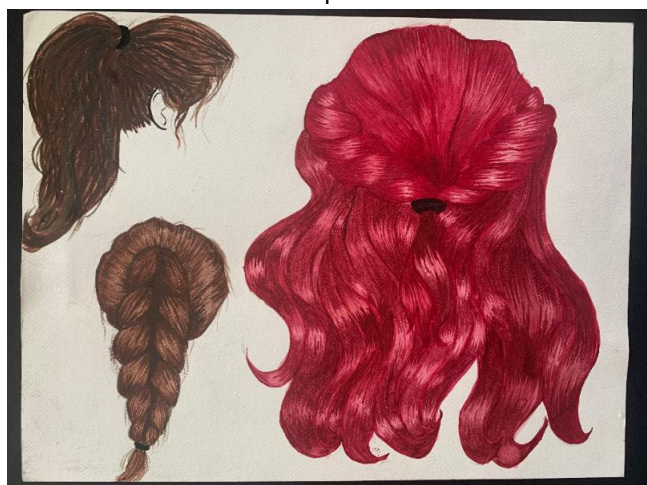


Image 5



Image 12

Sustained Investigation Score: Row A: Score 2 • Row B: Score 2 • **Row C: Score 1** • Row D: Score 1