



2023 AP® Drawing

Sustained Investigation: Analytic Scoring Rubric and Score Rationale

Row B—Score 3

| Analytic Scoring Rubric Row B: Practice, Experimentation, and Revision | | |
|--|---|---|
| Writing Prompt 2: Describe how your sustained investigation shows evidence of practice, experimentation, and revision guided by your question(s) or inquiry. | | |
| 1 | 2 | 3 |
| Visual evidence of practice, experimentation, OR revision; however, visual evidence does not relate to a sustained investigation. | Visual evidence of practice, experimentation, OR revision relates to the sustained investigation. AND Written evidence relates to the visual evidence of practice, experimentation, OR revision. | Visual evidence of practice, experimentation, AND revision demonstrates development of the sustained investigation. AND Written evidence describes how the sustained investigation shows evidence of practice, experimentation, OR revision. |

Score Rationale

The visual evidence of practice, experimentation, and revision demonstrates the development of the sustained investigation. The intent of the inquiry to investigate “the contrast between moths and butterflies” to “represent the impact of external beauty on standards of self-perception” is exhibited throughout the sustained investigation symbolizing positive and negative aspects of beauty. Image 5 contains four variations of image 1, with acrylic paint altering each photograph. While illustrating experimentation, this process also represents the stated intent of revision. Revision is also apparent in image 7, which depicts the steps taken to develop image 8—including revising one sketch that was ultimately “scrapped.” Image 9 details the practice of creating image 10, which illustrates the morphing from the neutrally colored moth to the colorfully rendered butterfly. The written evidence also describes how the sustained investigation shows practice, experimentation, or revision. While the initial intent was to create “realism-oriented self-portraits,” with distinct color contrasts illustrating positive and negative aspects of beauty, the later images show the transition to display more emotion by experimenting with photographs and digital manipulation to create images that depict more “dynamic facial expressions.”



Image 6



Image 10

Written Evidence

Sustained Investigation

Identify the question(s) or inquiry that guided your sustained investigation.

Response:

How does the contrast between moths and butterflies represent the impact of external beauty standards on self-perception? While both pertain to the Lepidoptera class, we perceive them differently due to their external appearances. Moths symbolize death and typically elicit sentiments of disgust for their neutral colors, while butterflies are positively associated with hope for their colorful patterns. Growing up, I felt ostracized for my inconspicuous appearance compared to the beauty standard, like a moth living in a world of butterflies, which detrimentally impacted how I perceived myself.

Describe how your sustained investigation shows evidence of practice, experimentation, and revision guided by your question(s) or inquiry.

Response:

My investigation began with depicting the contrasting symbolism between moths and butterflies, with all the portraits of myself from the frontal view (1-3). With chalk pastel and oil/acrylic paint, I created realism-oriented self-portraits and distinct color contrast between the moths and butterflies. My concentration transitions into the impacts external beauty engenders on self-perception(4), with more dynamic facial expressions/angles to convey these emotions (7-15). While I maintained the same materials for realism and color contrast, I experimented with photographing reference photos (6).



Image 1

Sustained Investigation

Height: 20

Width: 15

Materials:

White charcoal pencil and hard pastels
on sanded pastel paper

Process(es):

Gridded the proportions and sketched
moths and butterflies with charcoal,
rendered with pastels



Image 2

Sustained Investigation

Height: 20

Width: 15

Materials:

White charcoal pencil and hard pastels
on sanded pastel paper

Process(es):

Planned out mask on photograph,
gridded the proportions with charcoal,
rendered with pastels



Image 3

Sustained Investigation

Height: 12

Width: 10

Materials:

White charcoal pencil, acrylic paint, oil paint, paint thinner (turpenoid), gesso wood board

Process(es):

Sketched proportions with charcoal, skull with acrylic, portrait with oil, erased oil with thinner

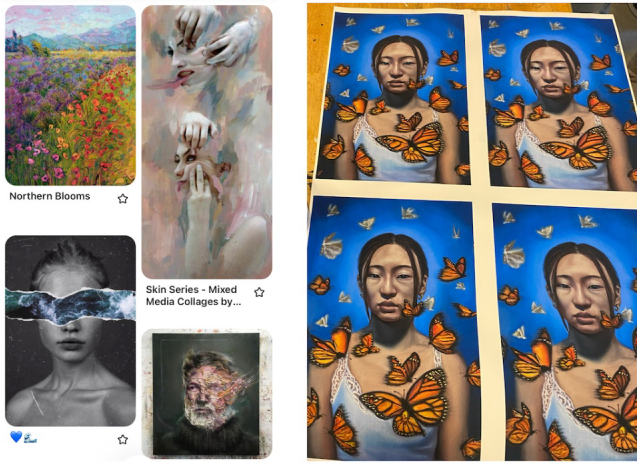


Image 4

Sustained Investigation

Height: NA

Width: NA

Materials:

Watercolor print and acrylic paint

Process(es):

4 print copies of Work 1, inspiration from Pinterest, layered acrylic paint on top to revise Work 1



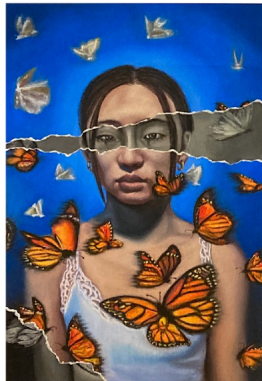
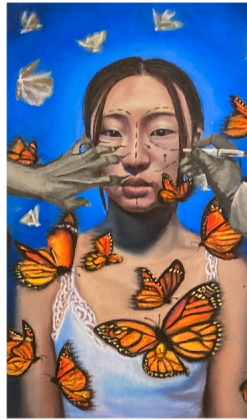
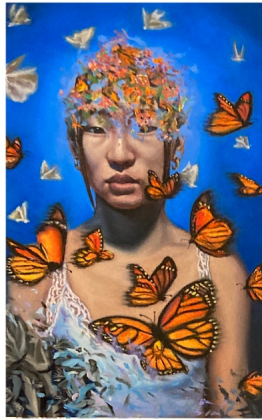


Image 5

Sustained Investigation

Height: 40

Width: 20

Materials:

Watercolor print and acrylic paint

Process(es):

4 print copies of Work 1, inspiration from Pinterest, layered acrylic paint on top to revise Work 1

Image 6

Sustained Investigation

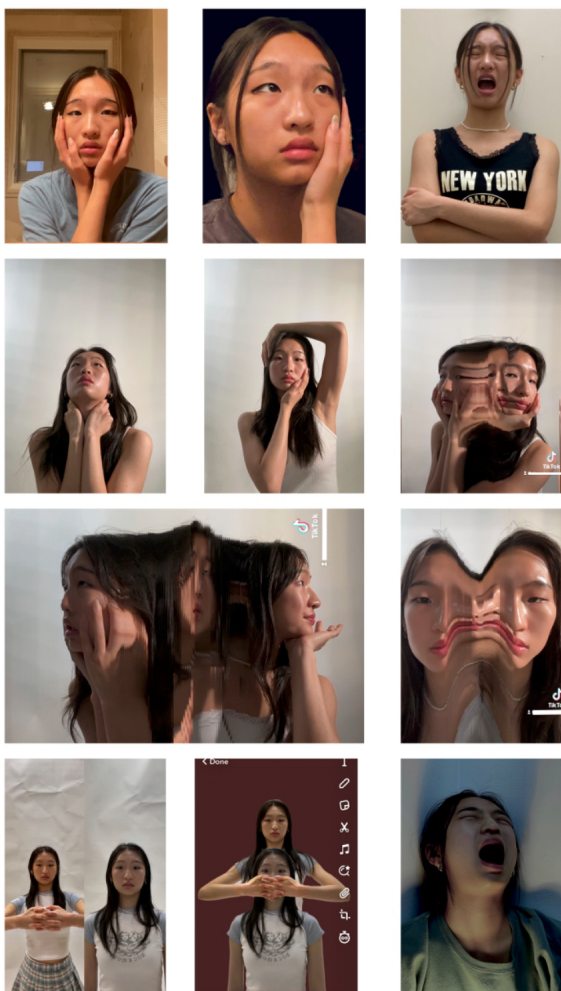
Height: NA

Width: NA

Materials: N/A

Process(es):

Photographed myself in different facial expressions, using distortion filters, and editing



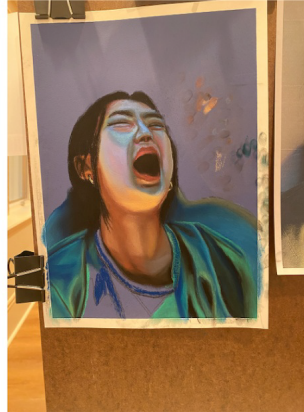
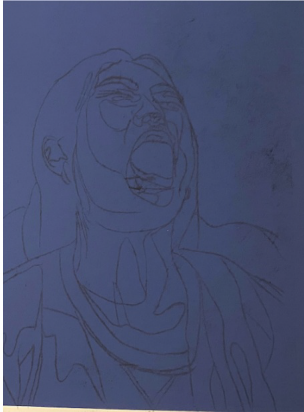
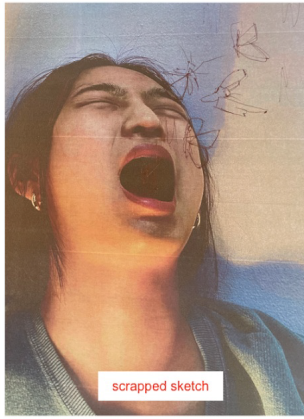
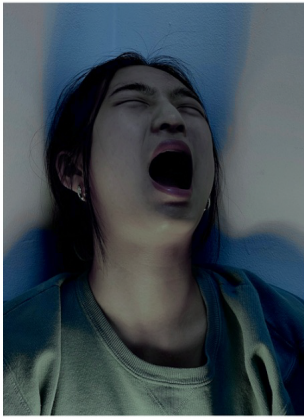


Image 7

Sustained Investigation

Height: NA

Width: NA

Materials:

Black charcoal pencil and hard pastels
on sanded pastel paper

Process(es):

Planned out moths on photograph,
sketched the proportions with charcoal,
rendered with pastels



Image 8

Sustained Investigation

Height: 12

Width: 9

Materials:

Black charcoal pencil and hard pastels
on sanded pastel paper

Process(es):

Planned out moths on photograph,
sketched the proportions with charcoal,
rendered with pastels



Image 9

Sustained Investigation

Height: NA

Width: NA

Materials:

White charcoal pencil and soft pastels
on sanded pastel paper

Process(es):

Gridded proportions with charcoal,
sketched butterflies and moths,
rendered and blended pastel



Image 10

Sustained Investigation

Height: 20

Width: 30

Materials:

White charcoal pencil and soft pastels
on sanded pastel paper

Process(es):

Gridded proportions with charcoal,
sketched butterflies and moths,
rendered and blended pastel

Image 11

Sustained Investigation

Height: NA

Width: NA

Materials:

White charcoal pencil and hard pastels
on sanded pastel paper

Process(es):

Edited reference, gridded proportions
and sketched wings with charcoal,
rendered with pastels

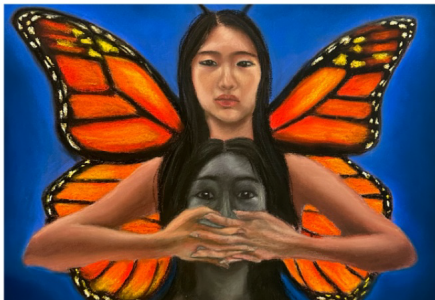
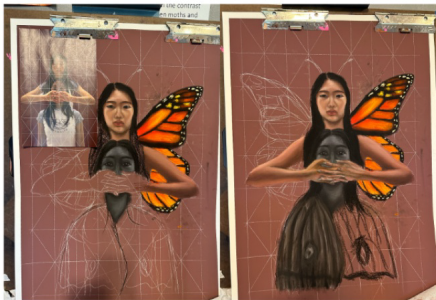
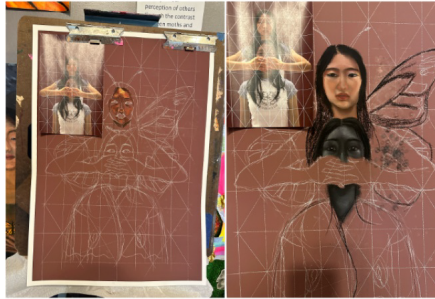
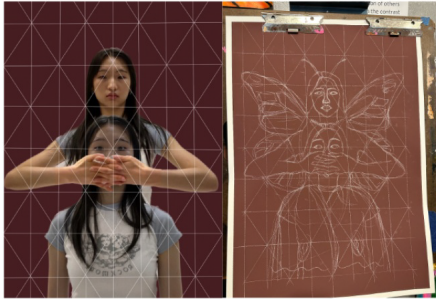
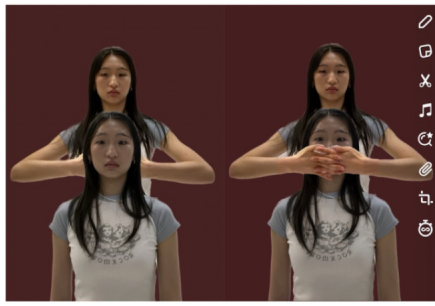




Image 12

Sustained Investigation

Height: 27

Width: 20

Materials:

White charcoal pencil and hard pastels
on sanded pastel paper

Process(es):

Edited reference, gridded proportions
and sketched wings with charcoal,
rendered with pastels



Image 13

Sustained Investigation

Height: 12

Width: 9

Materials:

White charcoal pencil and hard pastels
on sanded pastel paper

Process(es):

Planned mask on photograph, sketched
proportions with charcoal, rendered with
pastel



Image 14

Sustained Investigation

Height: 12

Width: 9

Materials:

White charcoal pencil and hard pastels
on sanded pastel paper

Process(es):

Planned wings on photograph, sketched
proportions with charcoal, rendered with
pastel



Image 15

Sustained Investigation

Height: 24

Width: 16

Materials:

Acrylic paint and black fine liner pen on watercolor paper

Process(es):

Sketched proportions, rendered with acrylic, watered down acrylic glaze for aura, liner on ruler