



2023 AP[®] 3-D Art and Design

Sustained Investigation: Analytic Scoring Rubric and Score Rationale

Row A–Score 3

Analytic Scoring Rubric Row A: Inquiry		
Writing Prompt 1: <i>Identify the question(s) or inquiry that guided your sustained investigation.</i>		
1	2	3
Written evidence identifies an inquiry, but visual evidence does not relate to that inquiry. OR Written evidence does not identify an inquiry.	Written evidence identifies an inquiry that relates to the sustained investigation. AND Visual evidence demonstrates the sustained investigation.	Written evidence identifies an inquiry that guides the sustained investigation. AND Visual evidence demonstrates the sustained investigation.

Score Rationale

The written evidence describes an inquiry about guinea pigs that guides the sustained investigation through a meaningful presentation of visual evidence. Inquiry guidance is evident through the written evidence focusing on not just the flexibility of the animals’ bodies but also how they interact with and in space. The written evidence illustrates exploration and discovery by listing the media used (cardboard, clay, plaster, cloth, etc.) in pursuit of interpreting spatial relationships. The holistic written evidence, which describes the processes, further reinforces the visual evidence by explaining “capturing movement in drawings” (1), “creating silhouettes with clay” (4), and “placing cast plaster parts in position” (12). The visual evidence demonstrates the sustained investigation through photos and planning sketches of guinea pigs’ bodies independently and together. Additionally, the visual evidence illustrates seeking and discovering the most effective ways to use paper, plaster, cardboard, and yarn to communicate a range of not only abstractions of their bodies but how they cluster together and prefer to be in narrow and shielded spaces. The written evidence identifies an inquiry that guides, and the visual evidence demonstrates a robust and sustained investigation.

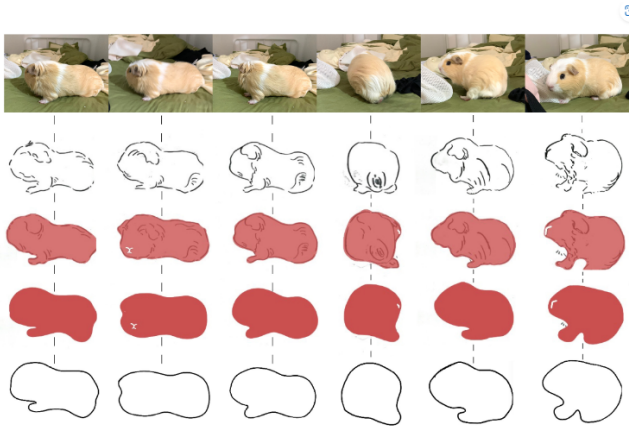


Image 1



Image 12

Written Evidence

Sustained Investigation

Identify the question(s) or inquiry that guided your sustained investigation.

Response:

I love guinea pigs. As I keep them and live with them every day, I am fascinated by how flexible their bodies are and how they interact with the space. In my work, I used a variety of materials like cardboard, hardening clay, plaster, cloth, and woolen yarn to show my observation and interpretation of the relationships between guinea pigs and space.

Describe how your sustained investigation shows evidence of practice, experimentation, and revision guided by your question(s) or inquiry.

Response:

(3) is an outline of paper-made guinea pigs connected with strips (1, 2), showing the dynamics. (5, 6) are hollow spaces with a simplified shape of guinea pigs on the top (4), stacking up from which makes a large space with independent small spaces. Inspired by the extrusion of guinea pigs, I made (9) by stacking extruded plaster balls into a cube. Inspired by the density, I made (12) with plaster balls (11). (13, 14, 15) is a maze designed with guinea pigs' habits. The fluctuation of the outer wall are moving curves of guinea pigs; the narrow and shielded space are also what they desire.

Image 1

Sustained Investigation

Height: N/A

Width: N/A

Depth: N/A

Materials:

picture, paper, pens, and markers.

Process(es):

Capture a few movements of my guinea pig, draw them, and simplify them.

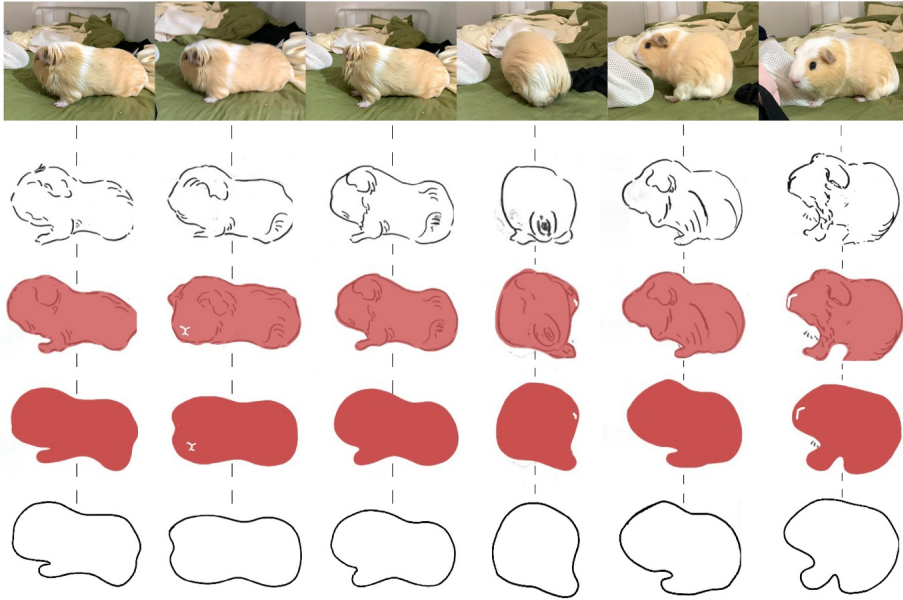


Image 2

Sustained Investigation

Height: N/A

Width: N/A

Depth: N/A

Materials: paperboard

Process(es):

Cut out simplified shapes from paper and link them with paper strips of different widths.

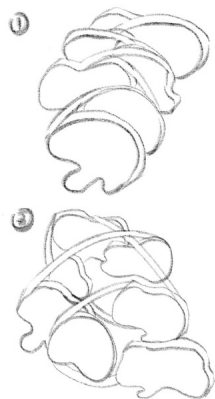


Image 3

Sustained Investigation

Height: 8

Width: 16

Depth: 24

Materials: paperboard

Process(es):

Link them with paper strips of varying widths and then arrange them from front to back.



Image 4

Sustained Investigation

Height: 14

Width: 18

Depth: 8

Materials: hardening clay

Process(es):

Use hardening clay to harden the guinea pig silhouettes and give them different heights and openings





Image 5

Sustained Investigation

Height: 14

Width: 18

Depth: 8

Materials: hardening clay

Process(es):

Stack them on top of each other when they're dry.



Image 6

Sustained Investigation

Height: 14

Width: 18

Depth: 8

Materials: hardening clay

Process(es):

Stack them on top of each other when they're dry.



Image 7

Sustained Investigation

Height: N/A

Width: N/A

Depth: N/A

Materials:

wooden box, balloons, syringes, and plaster.

Process(es):

Use a syringe to fill the balloons with plaster and stuff the balloons into a wooden box to set them

Image 8

Sustained Investigation

Height: 3

Width: 8

Depth: 8

Materials:

wooden box, balloons, syringes, and plaster.

Process(es):

When the plaster dries, take it out and put it back together.

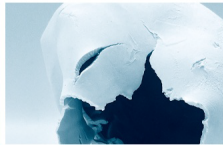




Image 9

Sustained Investigation

Height: 8

Width: 8

Depth: 8

Materials: plaster.

Process(es):

Put each set of plaster together neatly.

Image 10

Sustained Investigation

Height: N/A

Width: N/A

Depth: N/A

Materials: pens, and paper.

Process(es):

I made a sketch inspired by this photo.

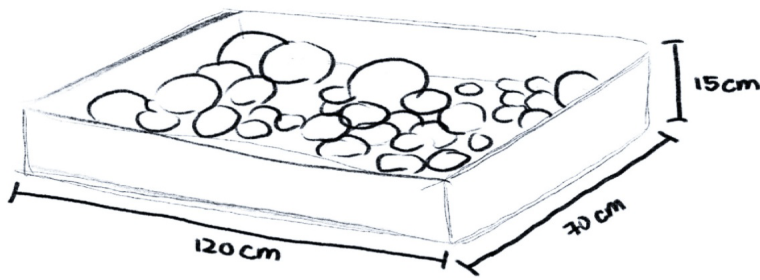




Image 11

Sustained Investigation

Height: 8

Width: 28

Depth: 47

Materials:

wooden box, balloons, syringes, weights, and plaster.

Process(es):

Put balloons filled with plaster into wooden boxes one by one and hold them in place with weights.

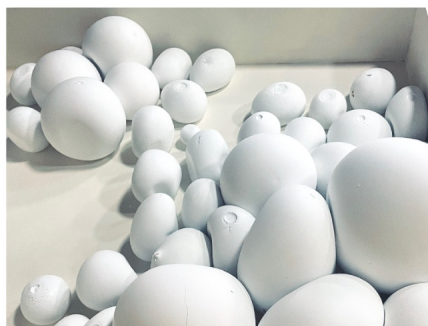


Image 12

Sustained Investigation

Height: 8

Width: 28

Depth: 47

Materials:

wooden box, balloons, and plaster.

Process(es):

Cut the balloon, take the plaster ball out, and arrange them in their original positions.

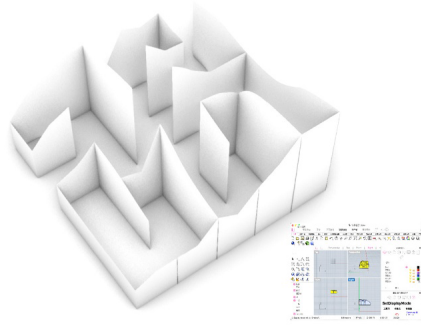
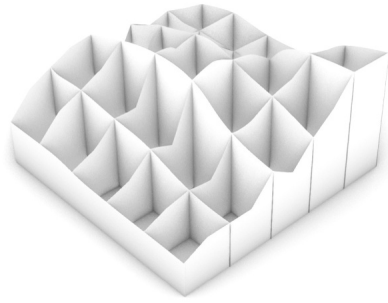


Image 13

Sustained Investigation

Height: 8

Width: 16

Depth: 16

Materials:

Rhino(a 3D APP), cloth, and cardboard.

Process(es):

Use Rhino for structure, cut the shape out of cardboard, wrap the cloth, and splice it together.



Image 14

Sustained Investigation

Height: 8

Width: 16

Depth: 16

Materials: woolen yarn.

Process(es):

Cover the top with woolen yarn.



Image 15

Sustained Investigation

Height: 8

Width: 16

Depth: 16

Materials: woolen yarn.

Process(es):

Cover the top with woolen yarn.