



2023 AP® 2-D Art and Design

Sustained Investigation: Analytic Scoring Rubric and Score Rationale

Row D—Score 2

Analytic Scoring Rubric Row D: 2-D/3-D/Drawing Art and Design Skills		
1	2	3
Visual evidence of rudimentary and moderate 2-D/3-D/Drawing skills.	Visual evidence of moderate and good 2-D/3-D/Drawing skills.	Visual evidence of good and advanced 2-D/3-D/Drawing skills.

Score Rationale

There is visual evidence of good 2-D design abilities in this portfolio, with some images reaching more success than others. The images convey an understanding of design elements and display thoughtful compositional choices.

In images 1 and 10, complementary color pairings in the portraits and cropped placement of the faces suggest exciting figure/ground relationships in the composition. The space and depth between the figure and background could be more fully explored in images 14–15, although the color gradations in the design connect the images.

In images 5, 7, 8, and 9, the diagonal orientation of objects on the picture planes employs emphasis, movement, and juxtaposition design principles. In image 5, the rendering of the hands does not demonstrate highly developed skills. Desaturated colors in image 9 provide unity in the painting, while the opposing angles of the vines and diagonal painted light create a sense of tension. However, the hands near the bottom section of the composition are not clearly defined.

Overall, the visual evidence in these images shows a proficient use of 2-D skills.

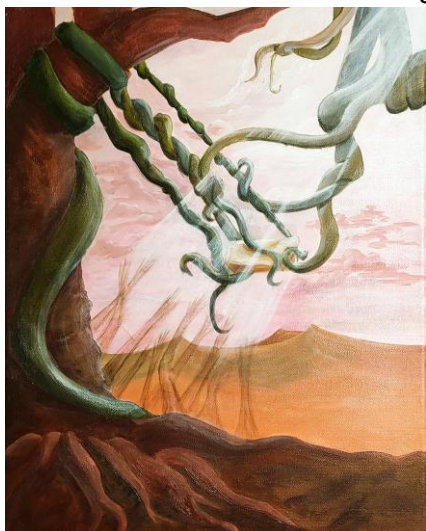


Image 9



Image 10

Written Evidence

Sustained Investigation

Identify the question(s) or inquiry that guided your sustained investigation.

Response:

How can I explain hope? How can I demonstrate the possible shackles that might restrain hope? I love how light shines in the dark. Sometimes I find difficulties in accomplishing certain goals, so I'm eager to present the gleaming brightness forthright by portraying the contrast created by restrictions and obstacles that one might encounter when seeking new possibilities. When it's dark, I discover the light that encourages me. When I look towards light, I feel like nothing is unfeasible. So, I aspire, through my paintings, to illuminate the impediments and constructional components of hope.

Describe how your sustained investigation shows evidence of practice, experimentation, and revision guided by your question(s) or inquiry.

Response:

In my sustained investigation, I particularly used light that shines from the top of the frames as the first element I've encountered (ex: 5, 8, 9, 10, 14). While organisms and green, healthy plants can represent precious and lively aspirations, they may also epitomize possible shackles that restrain hope (ex: 5, 7, 8, 9, 10). Above that, hope can also be reflected upon various facial expressions (ex: 1, 2, 4, 10, 12, 14, 15). Furthermore, Tamara de Lempicka was one of the main inspirational artists for my portraits (ex: 10) in respect to her notable depiction of the texture of lights.



Image 1

Sustained Investigation

Height: 15.8

Width: 11.8

Materials:

Flat canvas board, acrylic paint, magazine paper, white glue.

Process(es):

Magazine paper was pasted on background with red paint, and acrylic was applied to skin and hair.



Image 2

Sustained Investigation

Height: 15.8

Width: 11.8

Materials:

Water colors, water color paper, acrylics, flat canvas board.

Process(es):

Face painted by water colors was placed on canvas board with background painted by acrylics.

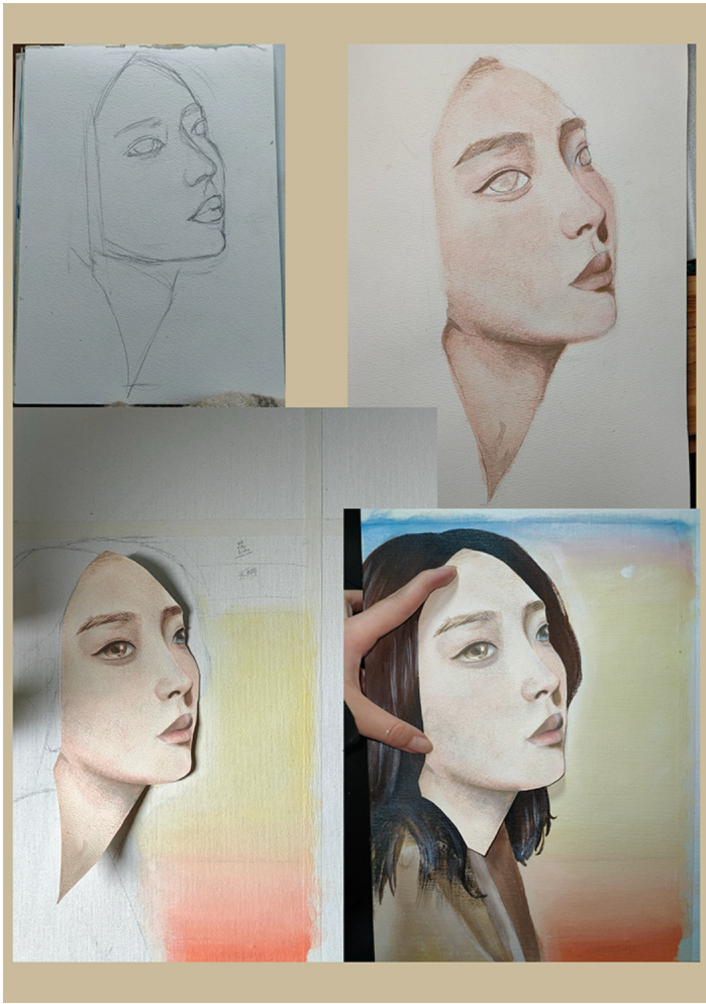


Image 3

Sustained Investigation

Height: N/A

Width: N/A

Materials:

Flat canvas board, acrylic paint, water colors, water color paper, white glue.

Process(es):

The face and neck was painted with watercolors in details then pasted onto the flat canvas board.



Image 5

Sustained Investigation

Height: 11.8

Width: 15.8

Materials:

Acrylic paint, flat canvas board.

Process(es):

I first painted the background with dark colors, covered them with white, then painted the hands on.

Image 6

Sustained Investigation

Height: N/A

Width: N/A

Materials:

Photo taken on a cellphone, photoshop, watercolors and watercolor paper.

Process(es):

A picture of my own hands reaching out is sketched with blue hands around that's grabbing it.





Image 7

Sustained Investigation

Height: 15.8

Width: 19.7

Materials: Acrylic paint, canvas board.

Process(es):

I first covered the sky, water, and tree with light colors, then painted the details.



Image 8

Sustained Investigation

Height: 19.7

Width: 15.8

Materials:

Acrylic paint, flat canvas board.

Process(es):

I first covered the background, then the bricks, tree, vines, snake, and at last the bird.



Image 9

Sustained Investigation

Height: 19.7

Width: 15.8

Materials: Acrylic paint, canvas board.

Process(es):

I first painted the sky, then the mountains, the dirt, the tree, the vines, and at last the light.



Image 10

Sustained Investigation

Height: 15.8

Width: 11.8

Materials:

Canvas board, oil paint, acrylic paint, and color pencils for drafting.

Process(es):

The background is painted with acrylic, then the face and vines were painted with oils on top.

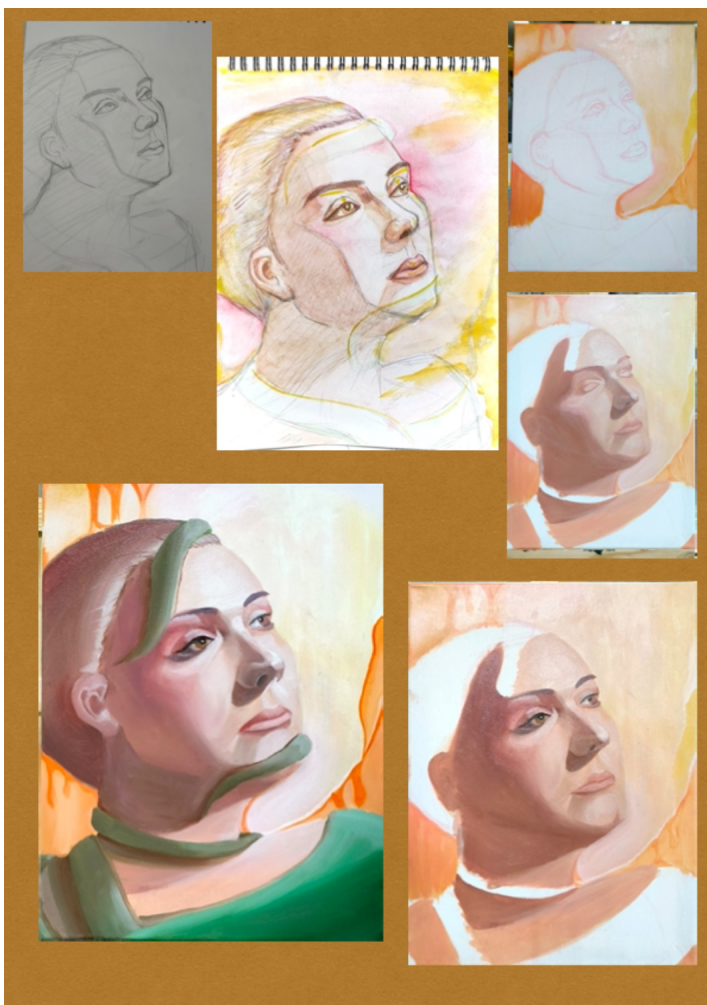


Image 11

Sustained Investigation

Height: N/A

Width: N/A

Materials:

Paper, water colors, canvas board,
acrylic paint, oil paint.

Process(es):

I first drafted an image of woman with
water colors, then created the artwork
with acrylic and oils.



Image 12

Sustained Investigation

Height: 15.8

Width: 11.8

Materials:

Flat canvas board, acrylic paint, magazine paper, white glue.

Process(es):

Magazine paper was first pasted on background and lighter parts of face, then acrylic was applied.

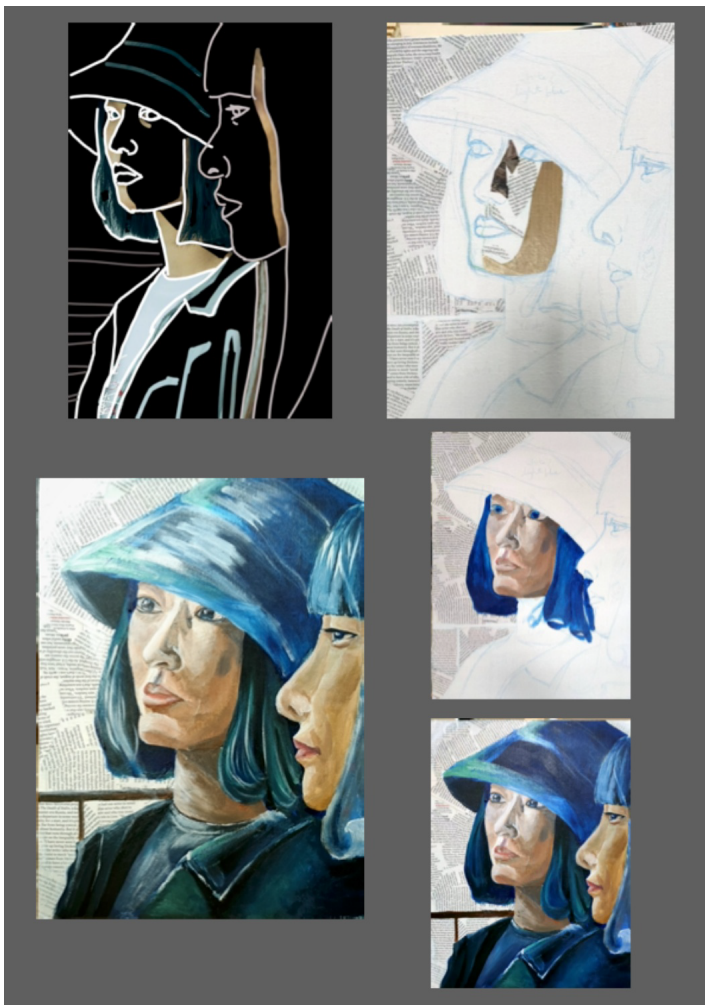


Image 13

Sustained Investigation

Height: N/A

Width: N/A

Materials:

Photoshop, flat canvas board, acrylic paint, magazine paper, white glue, color pencils.

Process(es):

Magazine paper was first pasted on background and lighter parts of face based on the ghost drawn.



Image 14

Sustained Investigation

Height: 15.8

Width: 11.8

Materials:

Flat canvas board, acrylic paint,
magazine paper, white glue.

Process(es):

Magazine paper pasted on background
with warm colors, then skin and hair was
covered with paint.

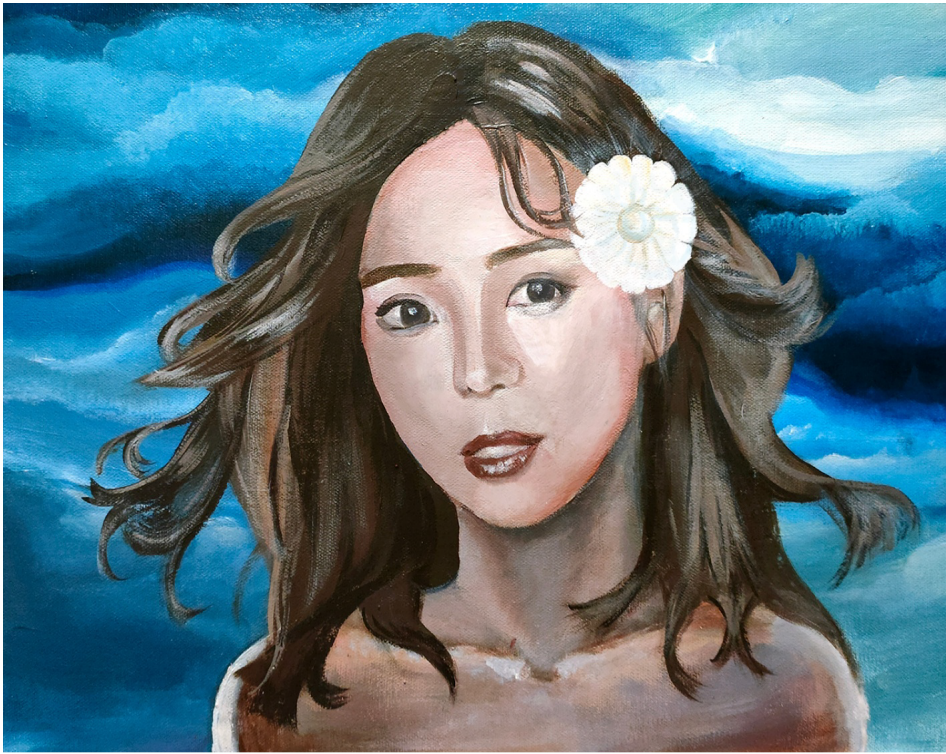


Image 15

Sustained Investigation

Height: 11.8

Width: 15.8

Materials:

Flat canvas board, acrylic paint.

Process(es):

The background was first painted, then the face, hair, and flower was applied.