



## 2023 AP® 2-D Art and Design

### Sustained Investigation: Analytic Scoring Rubric and Score Rationale

#### Row C—Score 3

Analytic Scoring Rubric Row C: Materials, Processes, and Ideas		
1	2	3
Little to no evidence of <b>visual relationships</b> among materials, processes, <b>OR</b> ideas.	<b>Visual relationships</b> among materials, processes, <b>OR</b> ideas are <b>evident</b> .	<b>Visual relationships</b> among materials, processes, <b>AND</b> ideas are <b>clearly evident</b> and <b>demonstrate synthesis</b> .

#### Score Rationale

The visual relationships among materials, processes, and ideas are clearly evident and demonstrate synthesis in this portfolio. The ideas behind the Terwilliger (road) and Fujin (god of wind and speed) track apparel lines are foundational to the design of the products. Image 4 shows sketches and prototypes that connect to the finished apparel design for image 5, which also offers additional variations of a tracksuit with or without logos and other details. Images 5, 14, and 15 present clear layouts for promoting the products, including multiple views of the clothing.

Images 3, 5, 7, and 8 show various track products with design connections that are clearly evident, as in the Terwilliger logo, the colors green and white, and a typographic map (image 2). The idea in images 9–15 relates to the Fujin Track Club apparel. Image 9 identifies the preliminary research that informed the logo design and other graphic imagery that is part of the brand. In images 11, 12, 14, and 15, fabric cutouts and graphic wind patterns on the apparel directly connect the process to the ideas and support synthesis. In the written statement, “These images showed my initial idea of the design, finding a design that works best, and then finalizing the design adding graphics and logos,” there is clear evidence in the visual relationships among materials, processes, and ideas, which demonstrates synthesis in this portfolio.



Image 5



Image 9

# Written Evidence

## Sustained Investigation

Identify the question(s) or inquiry that guided your sustained investigation.

**Response:**

My investigation focused on graphic and apparel design. I'm on my high school's track and cross country team so I designed products and graphics for running and racing. I created two fictional track clubs, the first being the Terwilliger Track Club a Portland based club named after a road that my team runs on very frequently. The second is Fujin Track Club, a Japanese based club named after the god of wind and speed. The goal was to create innovative and performance enhancing apparel, while also creating graphics that represent the track club appropriately and flow with the product itself.

Describe how your sustained investigation shows evidence of practice, experimentation, and revision guided by your question(s) or inquiry.

**Response:**

Throughout my investigation I did a lot of practice and experimentation by creating mockups of apparel and graphics. I experimented with color, shape, size, graphics, logos and fit until I found what works the best as seen in images 4, 9, 11, and 13. My investigation also shows a lot of revision because of where I started when creating a new piece, to when the piece was done as seen in images 11, 12 and 14. These images showed my initial idea of the design, finding a design that works best, and then finalizing the design and adding graphics and logos.



## Image 1

Sustained Investigation

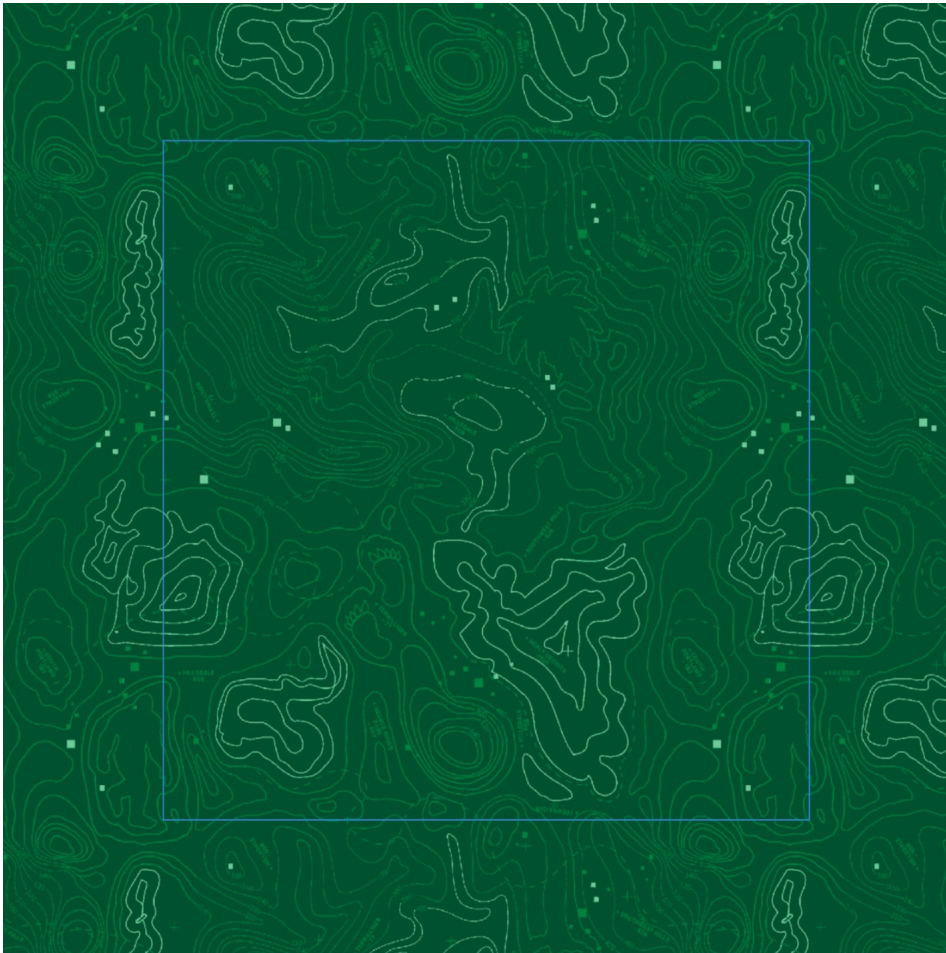
Height: 8

Width: 11

Materials:

Ipad pro, apple pencil, procreate

Process(es): Logo design, typography



## Image 2

Sustained Investigation

Height: 10

Width: 10

Materials:

Ipad pro, apple pencil, procreate

Process(es): Graphic design, pattern





## Image 3

Sustained Investigation

Height: 8

Width: 12

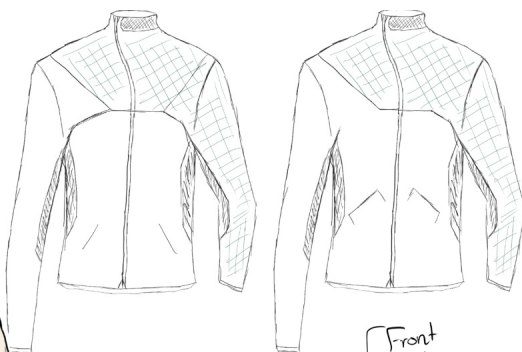
Materials:

Ipad pro, apple pencil, procreate, adobe  
illustrator

Process(es):

Merging, adding graphics with products

TTC Coat Front



Front  
Back  
Collar  
Detail

## Image 4

Sustained Investigation

Height: 8

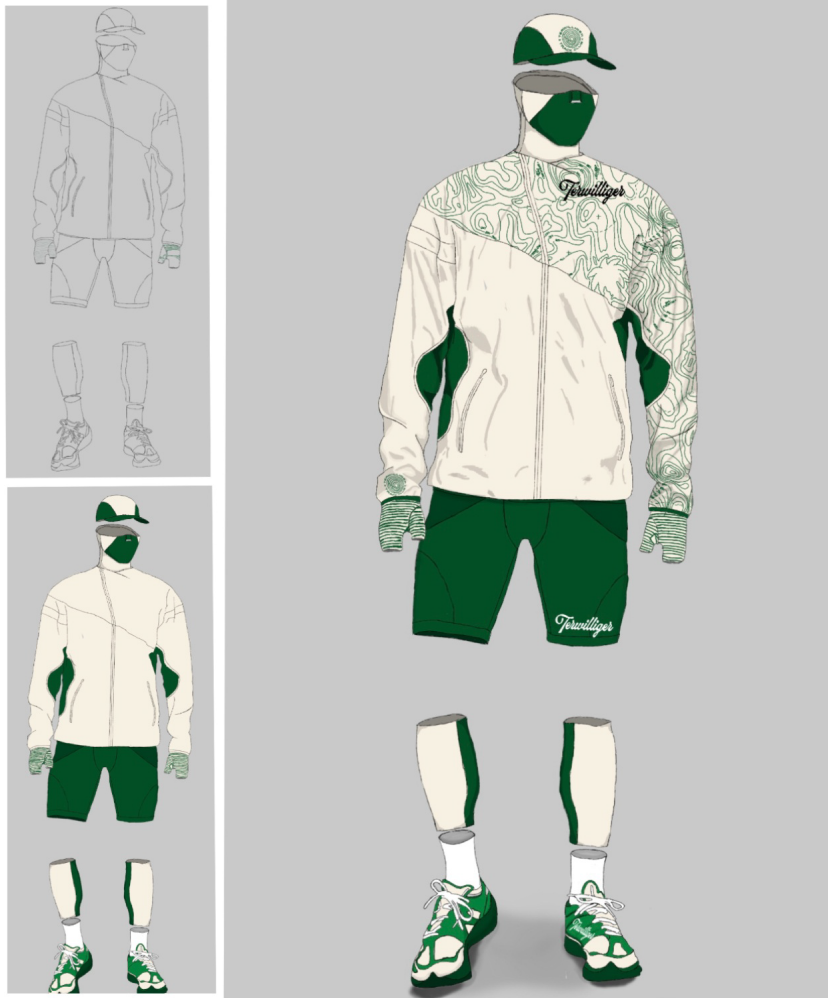
Width: 11

Materials:

Ipad pro, apple pencil, procreate

Process(es):

Sketching ideas and prototypes.



## Image 5

Sustained Investigation

Height: 11

Width: 8

Materials:

Ipad pro, apple pencil, procreate

Process(es):

Line-work, color, shading, detail, add logos at the end.



## Image 6

Sustained Investigation

Height: 8

Width: 11

Materials:

Ipad pro, apple pencil, procreate

Process(es):

Line-work, color, shading, detail.



## Image 7

Sustained Investigation

Height: 8

Width: 11

Materials:

Ipad pro, apple pencil, procreate

Process(es):

Line-work, color, shading, detail, add logos at the end.





## Image 8

Sustained Investigation

Height: 8

Width: 10

Materials:

Ipad pro, apple pencil, procreate

Process(es):

Line-work, color, shading, detail, add logos at the end.



## Image 9

Sustained Investigation

Height: 11

Width: 28

Materials:

Ipad pro, apple pencil, procreate

Process(es):

Sketching ideas, getting inspiration.



## Image 10

Sustained Investigation

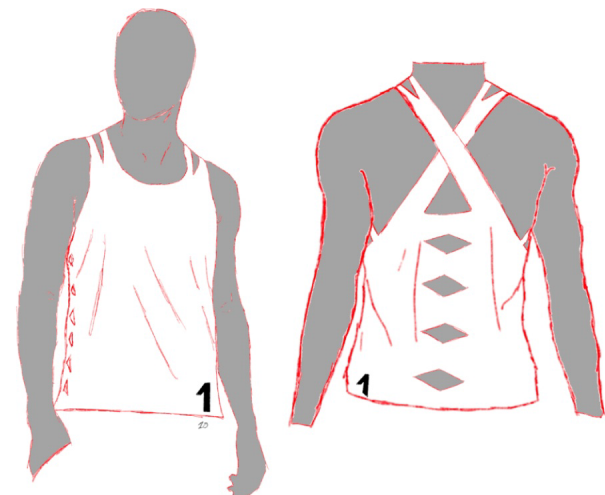
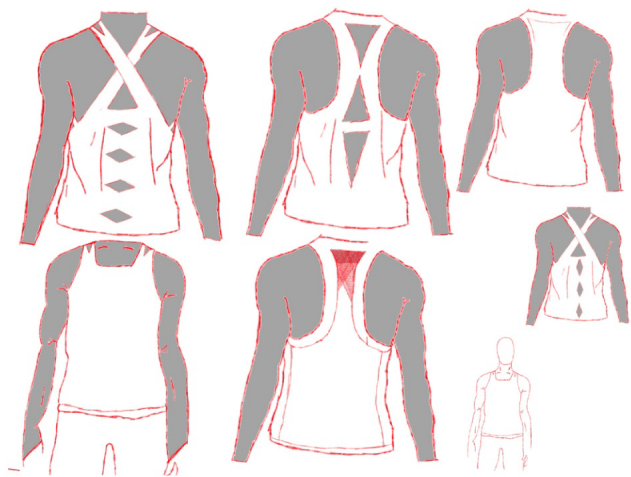
Height: 11

Width: 11

Materials:

Ipad pro, apple pencil, procreate, adobe  
illustrator

Process(es): Sketching, color, shading



# Image 11

Sustained Investigation

Height: 11

Width: 7

Materials:

Ipad pro, apple pencil, procreate

Process(es):

Sketching multiple prototypes.



## Image 12

Sustained Investigation

Height: 11

Width: 20

Materials:

Ipad pro, apple pencil, procreate, myself

Process(es):

Used myself as a model, sketched, line-work, photo.



## Image 13

Sustained Investigation

Height: 11

Width: 8

Materials:

Ipad pro, apple pencil, procreate

Process(es): Idea work, prototype





## Image 14

Sustained Investigation

Height: 11

Width: 8

Materials:

Ipad pro, apple pencil, procreate

Process(es):

Line-work, color, shading, detail, logos

## Image 15

Sustained Investigation

Height: 11

Width: 8

Materials:

Ipad pro, apple pencil, procreate

Process(es):

Line-work, color, shading, detail, logos

