



2023 AP® 2-D Art and Design

Sustained Investigation: Analytic Scoring Rubric and Score Rationale

Row C–Score 2

Analytic Scoring Rubric Row C: Materials, Processes, and Ideas		
1	2	3
Little to no evidence of visual relationships among materials, processes, OR ideas.	Visual relationships among materials, processes, OR ideas are evident .	Visual relationships among materials, processes, AND ideas are clearly evident and demonstrate synthesis .

Score Rationale

This portfolio reflects the visual relationships among materials, processes, or ideas in the inquiry statement, “to emphasize the emotions of animals.” Image 2 demonstrates practice regarding where the colorful tape and design elements should be placed in the composition to convey a smiling horse. Image 1 shows the final result of the horse. Image 5 continues with tape to create an expressive close-up of a cat with a more synthesized outcome. Images 3, 6, 8, and 10 share similar materials and processes but have limited success.

Moreover, some centrally located animals in the images are also awkwardly cropped. Images 13, 14, and 15 indicate the exploration and finished result using a complementary color scheme. However, the idea of expression is unclear in the visual evidence. The subjects in the portfolio could show more dramatic shifts in design to achieve coalescence between materials, processes, and ideas. Therefore, this portfolio earned a score of 2.

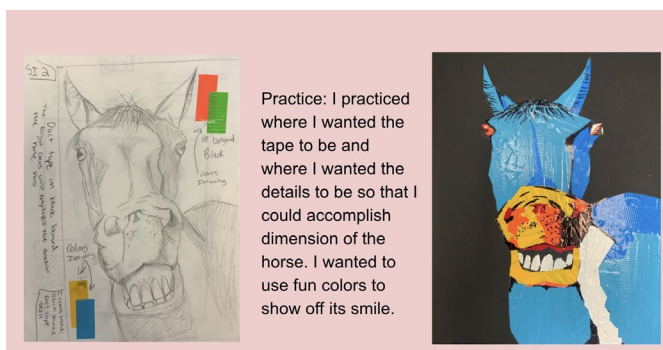


Image 2

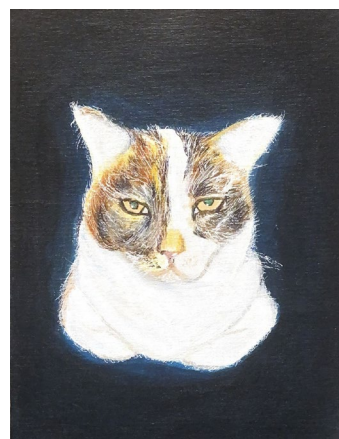


Image 6

Written Evidence

Sustained Investigation

Identify the question(s) or inquiry that guided your sustained investigation.

Response:

The question that guided my SI is how can I use 2D design skills to emphasize the emotions of different animals that I think are significant. I wanted to make sure each piece was different from the other one because their emotions are all different from each other. I've always loved animals and studying their emotions is really fascinating to me and I wanted to describe what I think they are.

Describe how your sustained investigation shows evidence of practice, experimentation, and revision guided by your question(s) or inquiry.

Response:

In work one I experimented with using duct tape to create images with bold sections of color. I revised work 13 which had a blue monochromatic scheme to a purple monochromatic scheme to compliment the yellow background. In composited work 4 I have examples of practice where I was trying different brush strokes and ways to place each color effectively.



Image 1

Sustained Investigation

Height: 20

Width: 16

Materials: Duct tape and black sharpie

Process(es):

I sketched the horse out then cut and placed each tape color. I used precise cuts for detail.

Image 2

Sustained Investigation

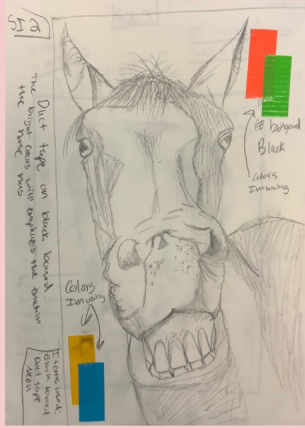
Height: N/A

Width: N/A

Materials: Google slides

Process(es):

I practiced where I would want the tape to lay so that the colors would complement correctly.



Practice: I practiced where I wanted the tape to be and where I wanted the details to be so that I could accomplish dimension of the horse. I wanted to use fun colors to show off its smile.





Image 3

Sustained Investigation

Height: 13

Width: 13

Materials: Acrylic paint, card board

Process(es):

Used pink and shades of green for complimentary palette.

Image 4

Sustained Investigation

Height: N/A

Width: N/A

Materials: Google slides

Process(es):

Process through painting this dog.

I used acrylic paint for this piece on top of cardboard

Process: Trying to match the colors evenly so that it will all come together. I also wanted to make sure that the piece will look lifelike so extra detail.

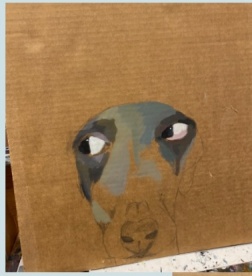




Image 5

Sustained Investigation

Height: 12

Width: 11

Materials: Cardboard, tape, and sharpie

Process(es):

Sketched design, cut and placed tape to create color blocks, sharpie for detail.



Image 6

Sustained Investigation

Height: 12

Width: 9

Materials:

Bristol board, white gel pen, acrylic paint

Process(es):

Focused on texture by using white gel pen to create fur.



Image 7

Sustained Investigation

Height: 9

Width: 8

Materials:

Acetate, scribe, soy ink, print paper,
etching press

Process(es):

Used dry point tech to show fine line
texture of cat.



Image 8

Sustained Investigation

Height: 12

Width: 10

Materials: Cardboard, acrylic paint

Process(es):

Used pink and green color scheme again to create contrast.

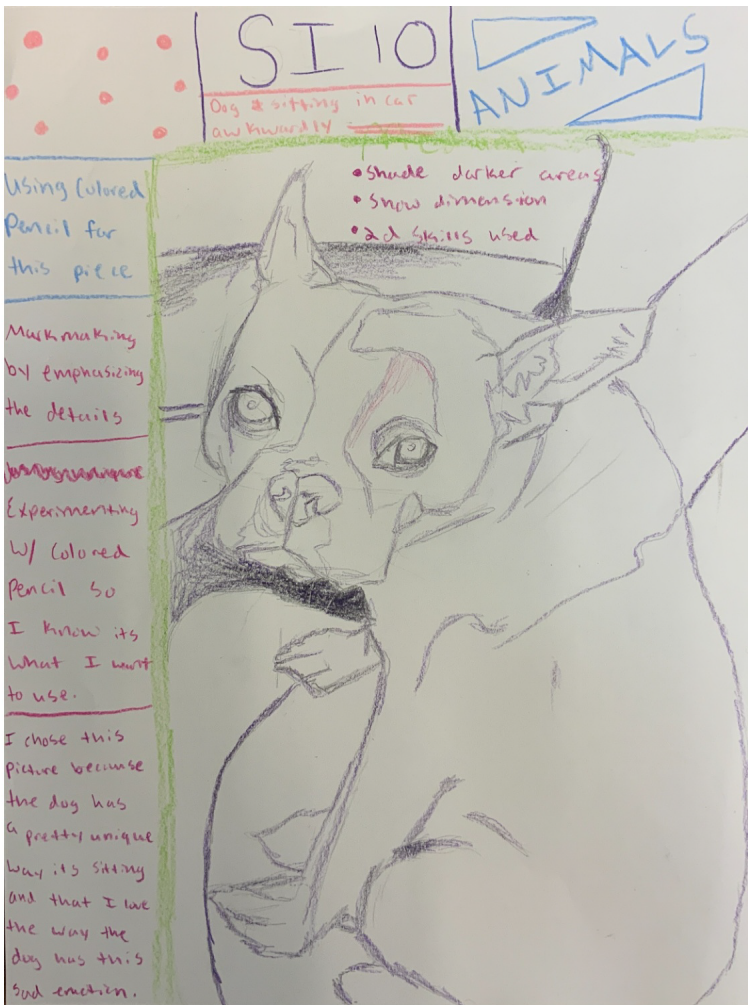


Image 9

Sustained Investigation

Height: 12

Width: 9

Materials: Paper, colored pencil

Process(es):

I sketched out with colored pencil what I was thinking about for my last SI.

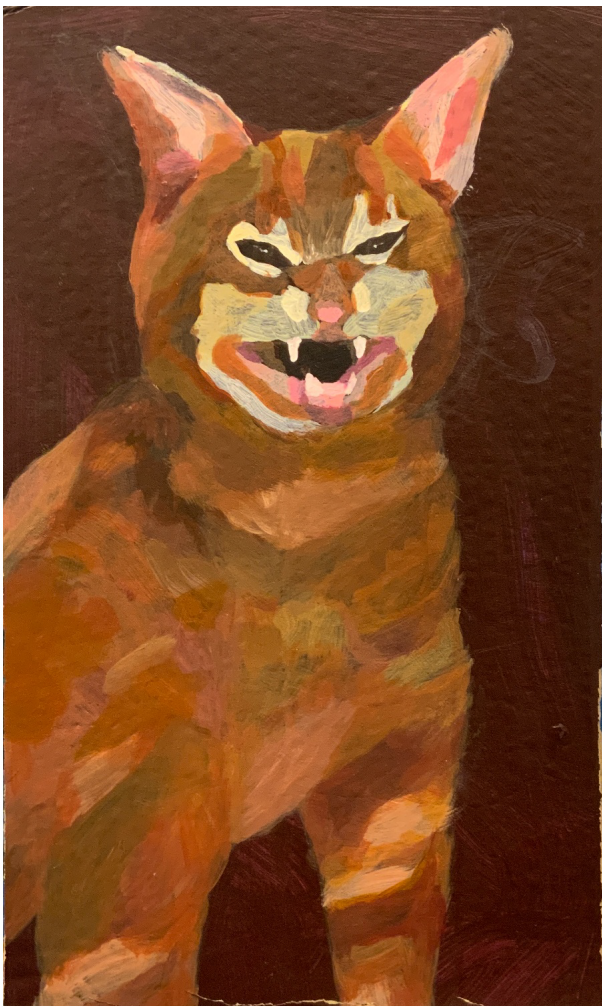


Image 10

Sustained Investigation

Height: 13

Width: 8

Materials: Cardboard, acrylic paint

Process(es):

Process used monochromatic orange red color scheme to give the kitty a fierce look.



Image 11

Sustained Investigation

Height: 12

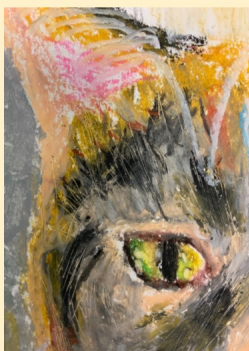
Width: 9

Materials: Paper, oil pastels

Process(es):

Captured nature of this cat serene used
scribe to create line in oil pastel.

Detail throughout my work



I used a scribe to ensure the effect of hair and to bring together the colors.

I made sure to show detail by blending the colors and evenly shading them.

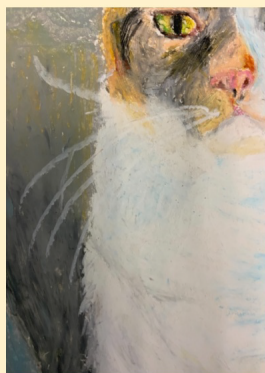


Image 12

Sustained Investigation

Height: N/A

Width: N/A

Materials: Google slides

Process(es):

Details of using a scribe to emphasize the fur on the cat.



Image 13

Sustained Investigation

Height: 11

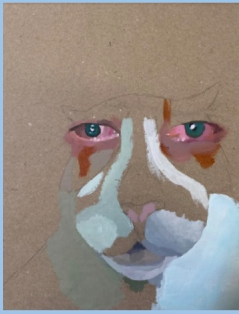
Width: 9

Materials: Cardboard, acrylic paint

Process(es):

Complementary color scheme of purple and yellow to create contrast.

revision



I started off with a blue vibe but I decided I didn't like it so I went with with purple and yellow complementary scheme

Did different purple tints and shades



Final:



Image 14

Sustained Investigation

Height: N/A

Width: N/a

Materials: Google slides

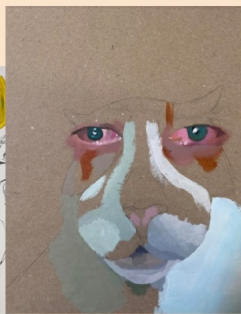
Process(es):

I revised my painting to a purple monochromatic scheme so it would complement the yellow.

Experimentation

I used experimentation by trying out different colors to see what will complement the cat.

I tried blue out but wasn't what I was looking for



I ended up painting in purple and it complemented the cat and the yellow in the end

I experimented with how i placed the whiskers on the cat and ended up liking them.



Image 15

Sustained Investigation

Height: N/A

Width: N/A

Materials: Google slides

Process(es):

I experimented with different colors.