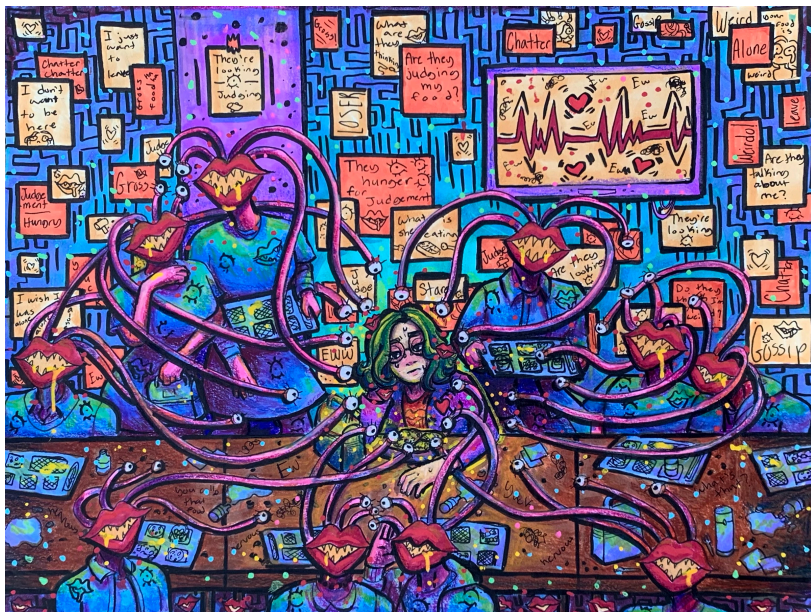


AP 2-D Art and Design Portfolio

Selected Works—Score 5



Work 1

Selected Works

Height: 9 inches

Width: 12 inches

Idea(s): A girl who is socially anxious to eat in public. Used mouths to show her fear of being talked about.

Material(s): -Markers
-Color pencils
-Black Pens
-Paint Pens

Process(es): Lightened the center as well as used elongated eyes to lead point of interest towards the girl.



Work 2

Selected Works

Height: 12 inches

Width: 9 inches

Idea(s): This piece represents social anxiety involving standing in line and confronting receptionists.

Material(s): -Markers
-Color pencils
-Black Pens
-Paint Pens

Process(es): Continued to layer color pencil over marker as it adds texture and vibrant colors for shading.



Work 5

Selected Works

Height: 12 inches

Width: 9 inches

Idea(s): Social anxiety from being called on in class. The girl feels the pressure to answer correctly.

Material(s): -Markers

- Color pencils

-Black Pens

-Paint Pens

-White Gel Pen

Process(es): Used masks that display mocking and judging. Used eyes and bright colors to direct attention.

2022 AP[®] 2-D Art and Design

Selected Works—Score 5

Scoring Criteria

2-D/3-D/Drawing Art and Design Skills

Little or no visual evidence of 2-D/3-D/Drawing **skills**.

Score Rationale

This portfolio shows evidence of highly developed 2-D skills. Although the compositions seem to be overly busy or chaotic, it is apparent that careful consideration was given to the placement of lines, shapes, colors, textures, and text received careful consideration. In each image, an established focal point subtly indicates the development of leading lines and shapes. While all works feature vibrant colors, they are well harmonized and provide a sense of unity. For example, in work 5, not only does the perspective help to direct attention to the girl sitting at the bottom left, but the curvilinear lines also aid in focusing the viewer's attention on her placement. In addition, the triangular arrangement of the yellow signs provides support in emphasizing the girl.

Materials, Processes, and Ideas

Little to no evidence of **visual relationships** among materials, processes, or ideas.

The choice of materials and employed processes support the student's intent to represent a variety of social anxieties. For example, in work 1 the student notes that they "lightened the center" and used "elongated eyes" to make the girl the center of interest. In work 4, the student states that they "Weaved cameras towards the man as well as spotlight to bring attention back to the man," supporting the idea of anxiety associated with an interview.

Writing

Written evidence **may identify** materials, processes, and ideas.

The written evidence clearly identifies the materials, processes, and ideas presented in the portfolio.