

# **AP 2-D Art and Design Portfolio**

Selected Works—Score 1



## Image 15

Sustained Investigation

**Height:** 3 inches

**Width:** 4 inches

**Material(s):** watercolor, salt and ink

**Process(es):** First layers in watercolors, tree drawn last. This is a detail of the larger artwork

## Written Evidence

Sustained Investigation

1. Identify the question(s) or inquiry that guided your sustained investigation.
2. Describe how your sustained investigation shows evidence of practice, experimentation, and revision guided by your question(s) or inquiry.

### Response 1:

I take my inspiration from natural forms and imagery such as leaves, flowers and trees. I feel that nature is one of the most important aspects of our life on earth. The images I use function like a symbolic language; trees, leaves, and flowers are like letters forming words. My artwork shows my theme of appreciation for nature through colors and choice of media. Watercolor and drawing take time, and I spent this time reflecting on the beauty and importance of nature.

### Response 2:

On images 3, image 4 and image 7 I used similar techniques, but the results are different because I improved with the process of using salt on watercolor over time. My understanding of watercolor has changed over time - in my early artworks I didn't use a lot of water so my later pieces are stronger overall as I learned that medium. Looking at images 1 and image 13, they stand out from the others because I tried different techniques: In image 1, I used collage to create texture on the tree branches, and on image 13 I used acrylic paint on canvas.



## Work 1

Selected Works

**Height:** 12 inches

**Width:** 18 inches

**Idea(s):** I was inspired by the idea of things seeming similar but actually being different.

**Material(s):** watercolor, graphite, and salt.

**Process(es):** A layer of watercolor with salt effect, pen for the leaves.



## Work 2

Selected Works

**Height:** 12 inches

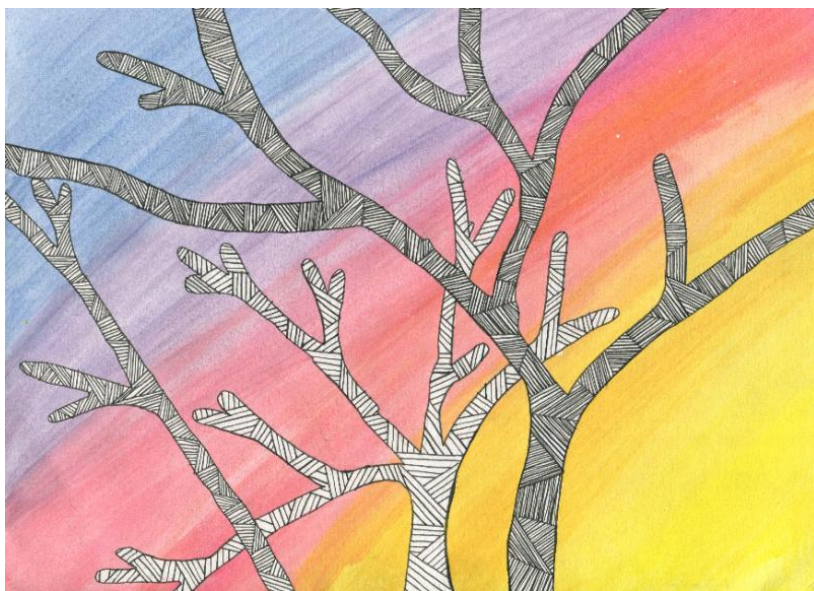
**Width:** 18 inches

**Idea(s):** I wanted to make variations on a theme.

**Material(s):** watercolor and pencil.

**Process(es):** First I did different layers of watercolors, leaves and flowers drawn last





## Work 3

Selected Works

**Height:** 9 inches

**Width:** 12 inches

**Idea(s):** I was inspired by the beauty of trees in nature.

**Material(s):** watercolor and graphite

**Process(es):** First layers in watercolors, tree drawn last



## Work 4

Selected Works

**Height:** 7 inches

**Width:** 10 inches

**Idea(s):** I am inspired by nature, how the simplest forms are the most beautiful

**Material(s):** graphite, ink

**Process(es):** Drawing made first in pencil and then I traced over with ink



## Work 5

Selected Works

**Height:** 12 inches

**Width:** 12 inches

**Idea(s):** I was inspired by the idea that beauty is everywhere.

**Material(s):** Watercolor, Graphite and salt

**Process(es):** A layer of watercolors with salt effect, flowers drawn last

# 2022 AP<sup>®</sup> 2-D Art and Design

## Selected Works—Score 1

### Scoring Criteria

### Score Rational

#### 2-D/3-D/Drawing Art and Design Skills

**Little or no** visual evidence of 2-D/3-D/Drawing **skills**.

These five works have little or no visual evidence of 2-D skills. While the student shows some intention in manipulating the background surfaces, the foregrounds remain simplistic. In images 1, 3, and 5, there is an attempt to develop the works more fully using linear patterns. However, the lack of development in the leaves and flower drawings in image 2 makes it hard to discern them from the background. Limited consideration of compositional placement is evident in works 4 and 5.

#### Materials, Processes, and Ideas

**Little to no** evidence of **visual relationships** among materials, processes, or ideas.

*The visual relationship between materials, processes, and ideas is not evident in this selection of works.* For example, in image 1, the “idea of things seeming similar but actually being different” is too vague and unsupported by the slight difference between the two drawings. Additionally, there is no apparent connection between watercolor, graphite, and salt and the idea. Images 3 and 4 reference the intent of exploring beauty in nature which is evident in the imagery, but the relationships between the ideas, materials, and process are not clearly defined.

#### Writing

Written evidence **may identify** materials, processes, and ideas.

Written evidence may identify materials, processes and ideas.