

2022 AP[®] Drawing Portfolio

Sustained Investigation

Row D–Score 3

Written Evidence

Writing Prompt #1:

Identify the question(s) or inquiry that guided your sustained investigation.

Writing Prompt #2:

Describe how your sustained investigation shows evidence of practice, experimentation, and revision guided by your question(s) or inquiry.

Student Response

My question is, how can art depict the emotions of people's struggles through surreal imagery? The emotions people struggle with are often hard to express to others, with this portfolio I tried to convey the emotions of anger, fear, grief, oppression, and isolation. visualizing it in a way that people could understand. Focusing on the emotions of losings a loved one, oppression of one's image, dissociation, and not being able to move on. I wanted the underlying theme of the tragic beauty of human nature, by beautifully depicting the struggles.

The first piece started with grief and pain of the death of a loved one, but the piece showed the emotion through the shading. as the pieces progressed I started to try and give them more life through their facial expressions for the piece's dissociation and self-image. by the end I started to show the emotion through their facial expressions and movement, in the woman with birds. by doing this I was able to express a clearing feeling of the struggles through these pieces.

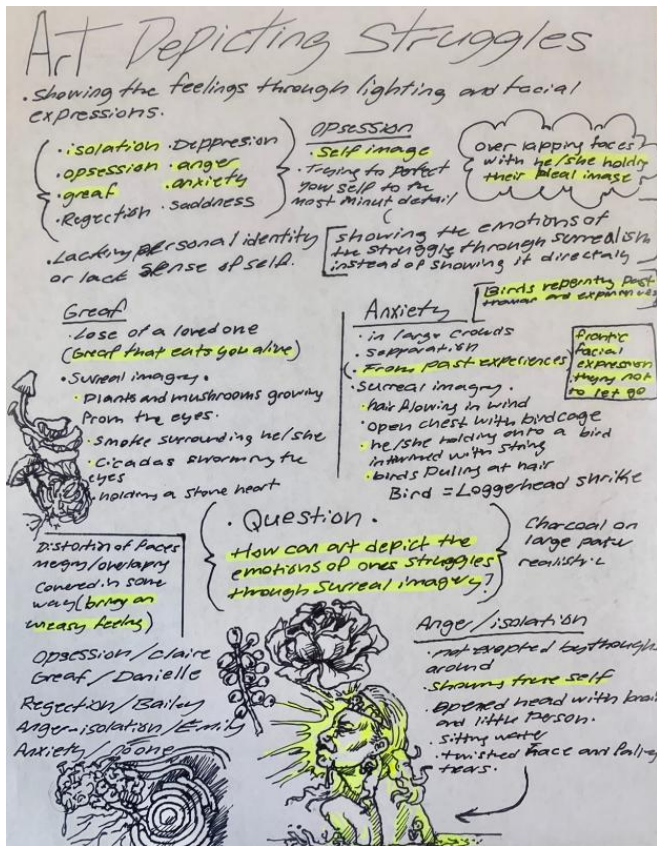


Image 1

Sustained Investigation

Height: 11 inches

Width: 8.5 inches

Material(s): pen.

Process(es): Planing out ideas for sustained investigation



Image 2

Sustained Investigation

Height: 10 inches

Width: 8 inches

Material(s): Graphite pencil.

Process(es): Stretching idea out for the loss of a loved one.



Image 3

Sustained Investigation

Height: 24 inches

Width: 18 inches

Material(s): Powdered charcoal, powdered graphite, and watercolor brushes.

Process(es): Painted with powdered charcoal, face, mushrooms, skulls, smoke, flowers, hair, to hands.

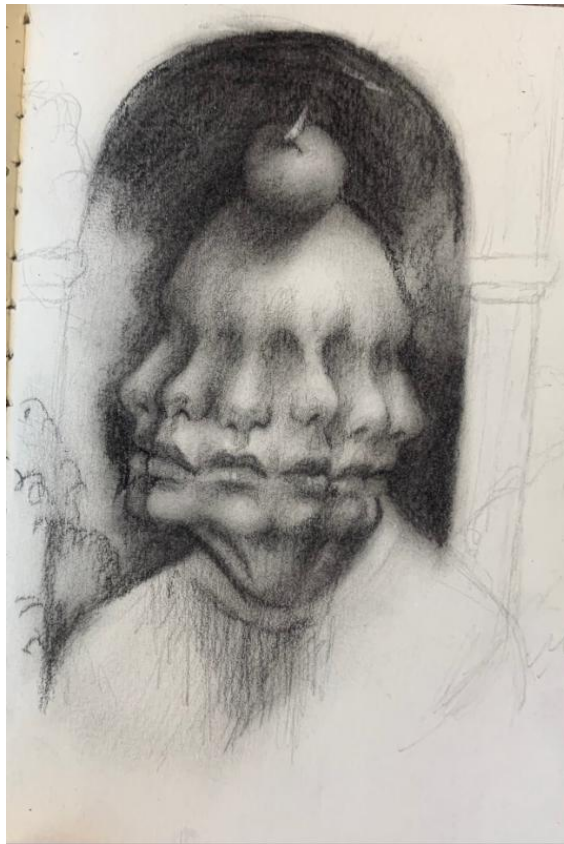


Image 4

Sustained Investigation

Height: 5 inches

Width: 3 inches

Material(s): Powdered charcoal and watercolor brushes.

Process(es): The sketch for a possible project.



Image 5

Sustained Investigation

Height: NA

Width: NA

Material(s): Red and black ballpoint pen.

Process(es): Started with the red pen, then shaded with the black.



Image 6

Sustained Investigation

Height: 8 inches

Width: 11 inches

Material(s): Powdered charcoal, watercolor brushes, and white gel pen.

Process(es): Started with the face, then the birds and hair. lastly working on the body and adding lightes.



Image 7

Sustained Investigation

Height: 10 inches

Width: 8 inches

Material(s): Graphite pencil.

Process(es): Sketching out ideas for the feeling of isolation.

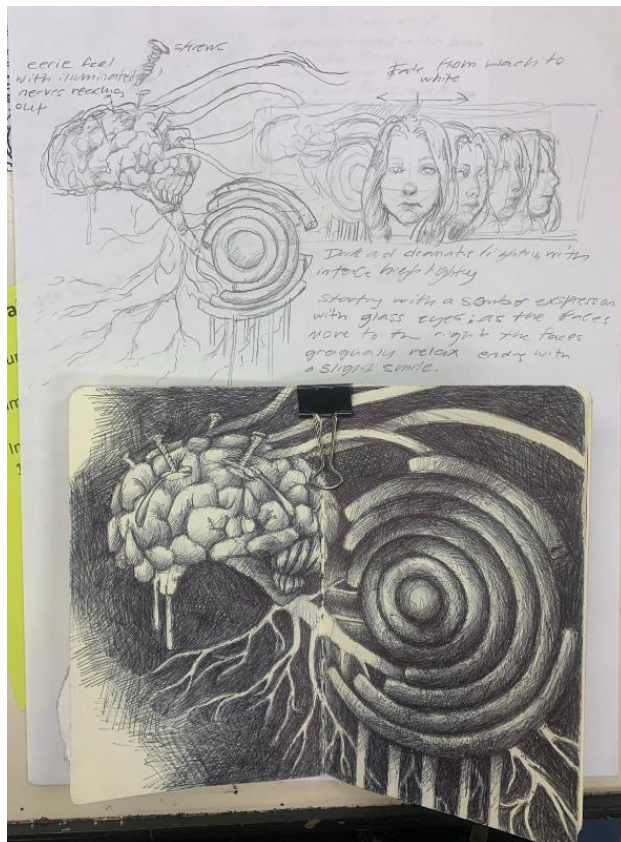


Image 8

Sustained Investigation

Height: 11 inches

Width: 8.5 inches

Material(s): Graphite pencil and ballpoint pen.

Process(es): Sketched out idea. then refined lines of brain. in sketchbook drew out refined lines and shadows.



Image 9

Sustained Investigation

Height: 9 inches

Width: 19 inches

Material(s): Powdered charcoal, liquid charcoal, watercolor brushes, and white gel pen.

Process(es): Sprayed a coating over the faces only. started working on the spiral and back of the brain.



Image 10

Sustained Investigation

Height: 9 inches

Width: 19 inches

Material(s): Powdered charcoal, liquid charcoal, watercolor brushes, and white gel pen.

Process(es): Coated it then refined and darkened things. Coated it again and added highlights.



Image 11

Sustained Investigation

Height: 5 inches

Width: 3 inches

Material(s): Ballpoint pen.

Process(es): Sketched out a dead bird with flowers coming out of it.

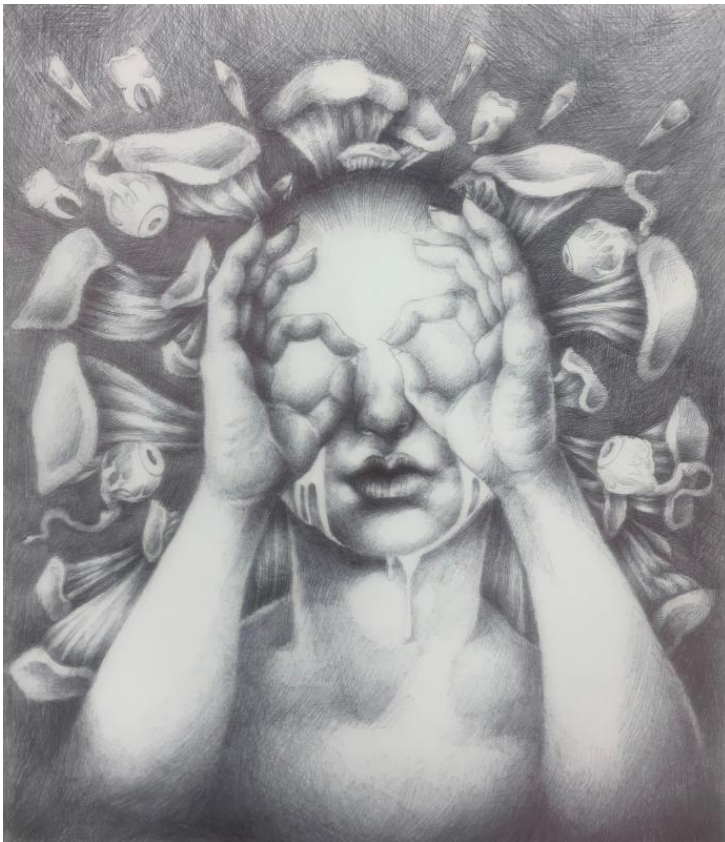


Image 12

Sustained Investigation

Height: 15 inches

Width: 15 inches

Material(s): Ballpoint pen.

Process(es): Shaded with a ballpoint pen from, face, hands, body, background, to mushrooms eyes and teeth.

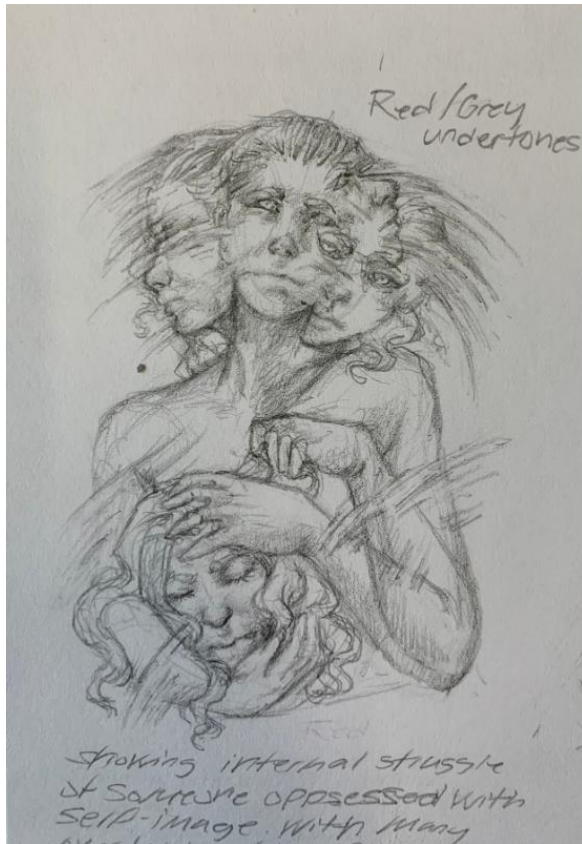


Image 13

Sustained Investigation

Height: 7 inches

Width: 4 inches

Material(s): Graphite pencil.

Process(es): Thought of an Idea to show the oppression of self-image without being too basic.



Image 14

Sustained Investigation

Height: 24 inches

Width: 20 inches

Material(s): Powdered charcoal and watercolor brushes.

Process(es): Sprayed a coating on all faces and started to block out the shirt and hands.



Image 15

Sustained Investigation

Height: 24 inches

Width: 20 inches

Material(s): Powdered charcoal, liquid charcoal, and watercolor brushes.

Process(es): Made shirt pattern with eraser. Sprayed a coating, went back with liquid charcoal to sharpen lines.

Sustained Investigation: Analytic Scoring Rubric and Score Rationale

Row D–Score 3

Analytic Scoring Rubric Row D: 2-D/3-D/Drawing Art and Design Skills		
1	2	3
Visual evidence of rudimentary and moderate 2-D/3-D/Drawing skills.	Visual evidence of moderate and good 2-D/3-D/Drawing skills.	Visual evidence of good and advanced 2-D/3-D/Drawing skills.

Score Rationale

This portfolio contains visual evidence of good and advanced drawing skills. The finished works (images 3, 6, 10, 12, and 15) demonstrate the use and manipulation of various materials and media to explore mark-based and painterly approaches to light/shade, form, and space. The soft and ethereal interplay of the powdered charcoal on paper in Work 3 is sophisticated and nuanced. The interplay between positive and negative space created by the smeared line of the smoke establishes a sinuous sense of movement and hierarchy, emphasizing the stylization of the figure and the embodiment of loss. Images 3 and 15 demonstrate a highly advanced understanding of mark-making as something that can be both additive and subtractive, creating a nuanced relationship between the media, paper, and tools used to apply it. The explorations of various media in this portfolio (images 4, 5, and 11) serve as visual evidence of the practice and experimentation that led to developing these highly advanced drawing skills. In these exploratory works, the viewer sees the artist’s refinement of the expressive mark-making (images 8 and 11) that led to work 12 and the soft painterly transitions (image 4) that speak viscerally in images 3 and 15. The visual evidence provided in the planning sketches and figure studies (2, 7, 8, and 13) further enhance the practice and development of drawing skills. While some of the planning images and process work for this portfolio only demonstrate good or proficient drawing skills (images 1 and 5), the predominance of work demonstrates highly advanced drawing skills through practiced application and a sophisticated personal voice.



Image 3



Image 15

Sustained Investigation Score: Row A: Score 3 • Row B: Score 3 • Row C: Score 3 • **Row D: Score 3**