

## 2022 AP<sup>®</sup> Drawing

### Sustained Investigation

#### Row D—Score 2

#### Written Evidence

##### Writing Prompt #1:

Identify the question(s) or inquiry that guided your sustained investigation.

##### Writing Prompt #2:

Describe how your sustained investigation shows evidence of practice, experimentation, and revision guided by your question(s) or inquiry.

#### Student Response

As a young woman and as a feminist, I inquired about the histories and qualities of the women in positions to enact change who lived in confining environments. I explored the plight of women, the power of women, and the plight-turned-to-power of women. Through portraiture, how can I portray the treatment of historical and mythological women who have countered the traditional and generally restrictive borders of femininity?

Needlework was taught to women at an early age to prepare them for marriage and to reflect stereotypically feminine traits. My experimentation with needlework (1,4,8,10,11,12) juxtaposes these traditional uses, portraying women non-traditionally or conveying the hardship that is often associated with women gaining power. I investigated images of Mary from both European and indigenous Latin cultures (1,9,15). I researched both religious and secular symbolism and altered them (7,8,10). I explored the sectioning of women to depict pain and an incomplete nature to their identities (1,2,6,8,10,11)



## Image 1

Sustained Investigation

**Height:** 10.9 inches

**Width:** 12.5 inches

**Material(s):** Acrylic paint and embroidery on chipboard

**Process(es):** Sectioned face of Mary, painted burdened cast and religious attire, embroidered Christian symbols



## Image 2

Sustained Investigation

**Height:** 14.0 inches

**Width:** 11.0 inches

**Material(s):** Colored pencil on paper  
Yarn and acrylic paint on cloth

**Process(es):** Sectioned Hypatia due to her violent death for beliefs, incorporated her discoveries like astrolabe



### Image 3

Sustained Investigation

**Height:** 11.5 inches

**Width:** 5.80 inches

**Material(s):** Acrylic paint on chipboard

**Process(es):** Painted a scene representing Garden of Eden, depicted event sequence of Adam and Lilith in conflict



### Image 4

Sustained Investigation

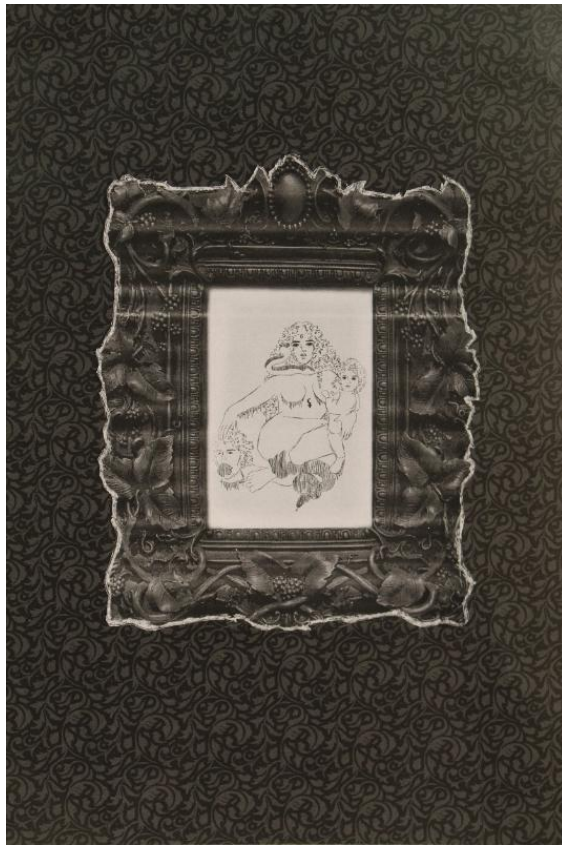
**Height:** 8.40 inches

**Width:** 9.00 inches

**Material(s):** Hand-sewn cloth and pencil on cloth

**Process(es):** Drew Ophelia with eyes open to counter the Victorian Era obsession with dead, submissive women





## Image 5

Sustained Investigation

**Height:** 11.1 inches

**Width:** 7.50 inches

**Material(s):** Collage of printed digital drawing and found image of frame on cardstock

**Process(es):** Drew Lilith rarely holding baby and head of Adam, placed frame over, attached to a wall-like paper



## Image 6

Sustained Investigation

**Height:** 22.0 inches

**Width:** 27.8 inches

**Material(s):** Pen and coffee on paper bag

**Process(es):** Chose bag to portray objectification, sectioned head, drew hair, dripped coffee to resemble blood



## Image 7

Sustained Investigation

**Height:** 18.5 inches

**Width:** 25.8 inches

**Material(s):** Acrylic paint and oil colored pencil on cardboard

**Process(es):** Replaced virgin, deity, and baptist figures with Puerto Rican birth control trials leaders



## Image 8

Sustained Investigation

**Height:** 10.8 inches

**Width:** 5.25 inches

**Material(s):** Pencil, marker, and embroidery on cloth

**Process(es):** Placed Vibia Sabina under the globus cruciger to represent dominion and poor treatment from Hadrian



## Image 9

Sustained Investigation

**Height:** 25.5 inches

**Width:** 16.5 inches

**Material(s):** Thread and found prints on hanger

**Process(es):** Made Virgin of San Juan figures, chose hanger to address abortion in Texas and Mexico and post-Roe



## Image 10

Sustained Investigation

**Height:** 17.5 inches

**Width:** 10.1 inches

**Material(s):** Oil paint, oil colored pencil, and embroidery on cloth canvas

**Process(es):** Framed Lucretia with arch, embroidered heart with knife, separated virgin symbol due to her rape





## Image 11

Sustained Investigation

**Height:** 19.5 inches

**Width:** 19.4 inches

**Material(s):** Hand-sewn cloth and watercolor on cloth

**Process(es):** Sewed flowers around a decaying body to express flourishing after suffering and gain after loss



## Image 12

Sustained Investigation

**Height:** 20.0 inches

**Width:** 1.40 inches

**Material(s):** Yarn and fabric

**Process(es):** Braided grey yarn resembling older hair, fashioned traditional Korean daenggi worn by maidens around



## Image 13

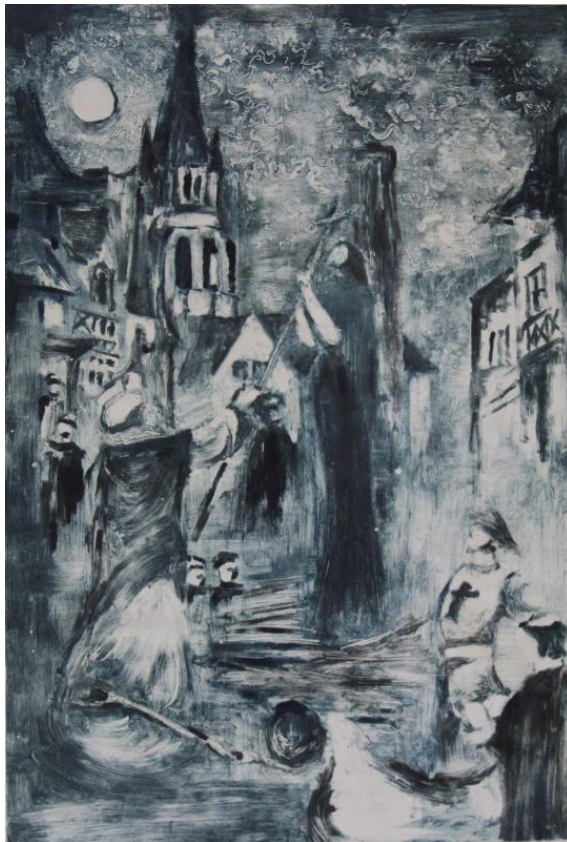
Sustained Investigation

**Height:** 13.6 inches

**Width:** 10.0 inches

**Material(s):** Monoprint on paper

**Process(es):** Inspired by Joan of Arc by Millais, monoprinted a more modern Joan of Arc to resemble myself



## Image 14

Sustained Investigation

**Height:** 13.6 inches

**Width:** 10.6 inches

**Material(s):** Monoprint on paper

**Process(es):** Inspired by Panthéon IV by dArc, monoprinted a blue, gloomy scene of Joan of Arc burning at stake





## Image 15

Sustained Investigation

**Height:** 13.1 inches

**Width:** 6.90 inches

**Material(s):** Colored pencil and acrylic paint on cardboard

**Process(es):** Researched retablos, drew Guadalupe consoling a girl, made religious archway, wrote personal insight

## Sustained Investigation: Analytic Scoring Rubric and Score Rationale

### Row D–Score 2

Analytic Scoring Rubric Row D: 2-D/3-D/Drawing Art and Design Skills		
1	2	3
Visual evidence of <b>rudimentary and moderate</b> 2-D/3-D/Drawing skills.	Visual evidence of <b>moderate and good</b> 2-D/3-D/Drawing skills.	Visual evidence of <b>good and advanced</b> 2-D/3-D/Drawing skills.

### Score Rationale

This portfolio shows visual evidence of moderate and good drawing skills using various media and approaches. The confident and creative approach to using such a wide range of materials and techniques is seen most successfully in images 1, 6, 10, and 14. Image 1 demonstrates a practiced and proficient use of light and shade paired with an intricate and experimental application of hand embroidery to render the face of Mary. Painterly marks paired with the delicate qualities of gold embroidery on fabric create an interesting juxtaposition of approach and concept. We see a similar approach in image 10, where the artist combines oil paint and embroidered fabric to convey narrative. The combination of mark-making in the embroidered fabric and soft attention to form in the painting is a fantastic concept and shows thoughtful inquiry. Yet, the control of light and shade in the figure and her hands does not fully develop and is proficient. Image 6 shows a good example of line-based mark-making to capture the hair of the figure on the conceptually thoughtful surface of the torn bag. While the idea for this piece is insightful, the cropping of the face creates an awkward composition, and the use of line to define the hair could benefit from some different weight and quality to employ space and form within the work. We see proficient use of additive and subtractive mark-making and manipulation of light and shade in the ghostly monoprint in image 14. The range of marks in this work is wonderful, but the use of light and shade creates a flat sense of space and a somewhat confusing composition. While the inquiry and ideation in this sustained investigation are exquisite, and much of the work in this portfolio is proficient, there are numerous examples of moderate drawing skills (images 4, 5, 8, 9, 13, and 15). Advanced concepts guide the development of the investigation; however, the drawing skills to convey these ideas are adequate. The fabric flowers to frame the face in work 4 are inventive, but the tonal qualities of the drawing are too subtle to compete with the contrast and physical texture of the flowers. The use of embroidery floss in work 8 creates a wonderfully tactile mark, but pencil application on fabric does not become line or tone, making the form in the work nondescript and unresolved. While conceptually works 9 and 12 connect clearly to the sustained investigation, neither adequately address proficient drawing issues.

Overall, this portfolio of work shows a clear synthesis of the choice of materials, processes, and ideas. Yet, the visual evidence exemplifies a range of moderate and good drawing skills.



Image 1



Image 8

Sustained Investigation Score: Row A: Score 3 • Row B: Score 3/2 • Row C: Score 3 • **Row D: Score 2**