

2022 AP[®] Drawing

Sustained Investigation

Row C—Score 2

Written Evidence

Writing Prompt #1:

Identify the question(s) or inquiry that guided your sustained investigation.

Writing Prompt #2:

Describe how your sustained investigation shows evidence of practice, experimentation, and revision guided by your question(s) or inquiry.

Student Response

My portfolio explores personal experiences with traveling, an important and consistent family tradition throughout my life. Initially, I saw my portfolio as an opportunity to showcase a variety of landscapes from around the world. However, I realized I could tell a story about how I've transformed from a naive infant into an introspective teenager. My questions included: How do I visually communicate the thoughts, emotions, and sensations experienced on my travels as I aged? and How can traditional landscapes use distortion, collage, or fantasy elements to convey ideas?

In the beginning, simple, abstract shapes and photo fragments reflect fading memories. More defined shapes and textures emerge as the clarity of my memory improved. I unified body parts and landscapes to represent my investigation. Natural imagery was used to symbolize inner peace. The final images reflect my thoughts as a teenager by emphasizing harshly realistic texture and detail. Throughout, I contrast enthusiasm (color) with indifference (black-and-white). I continually revised my art so that it balanced both chaotic, dynamic marks and relaxing, pleasing curves.

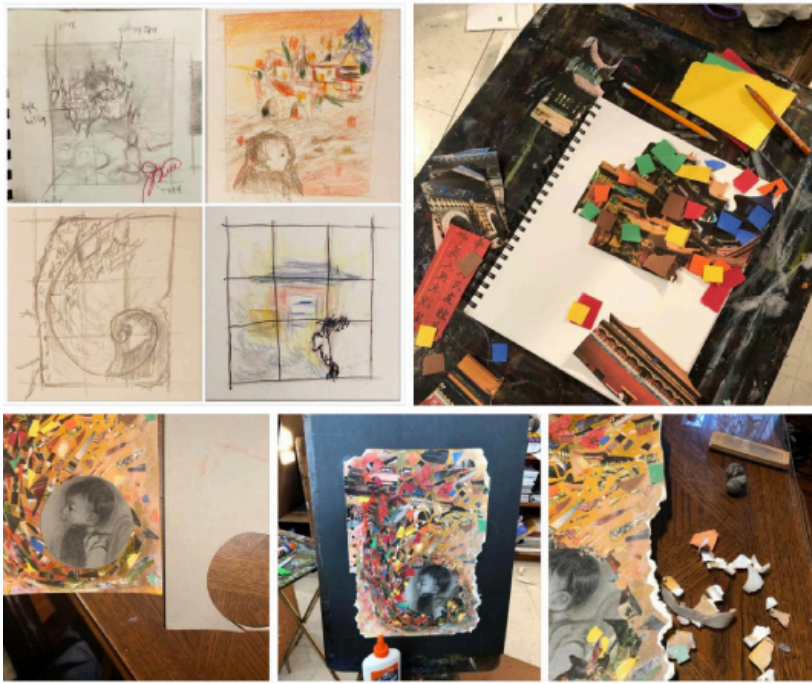


Image 1

Sustained Investigation

Height: n/a

Width: n/a

Material(s): charcoal, glue, photographs, colored paper, x-acto knife, acrylic

Process(es): thumbnail sketches, collage experimentation with travel photos and colored paper, realistic portrait

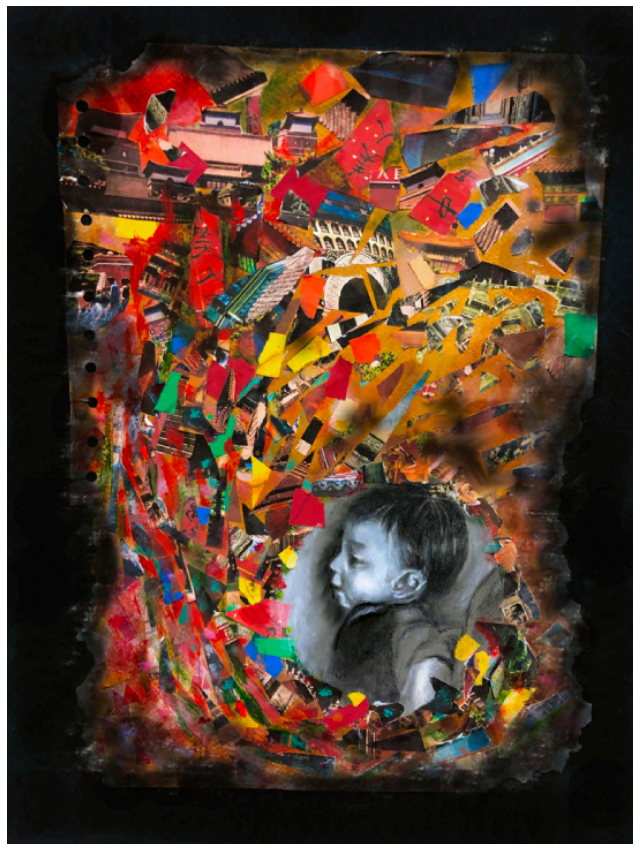


Image 2

Sustained Investigation

Height: 20 inches

Width: 15.4 inches

Material(s): cut-up copies of vacation photographs, charcoal drawing, colored paper, acrylic, glue

Process(es): collage of photos and simple shapes illustrates a lack of memories, indifference to travel

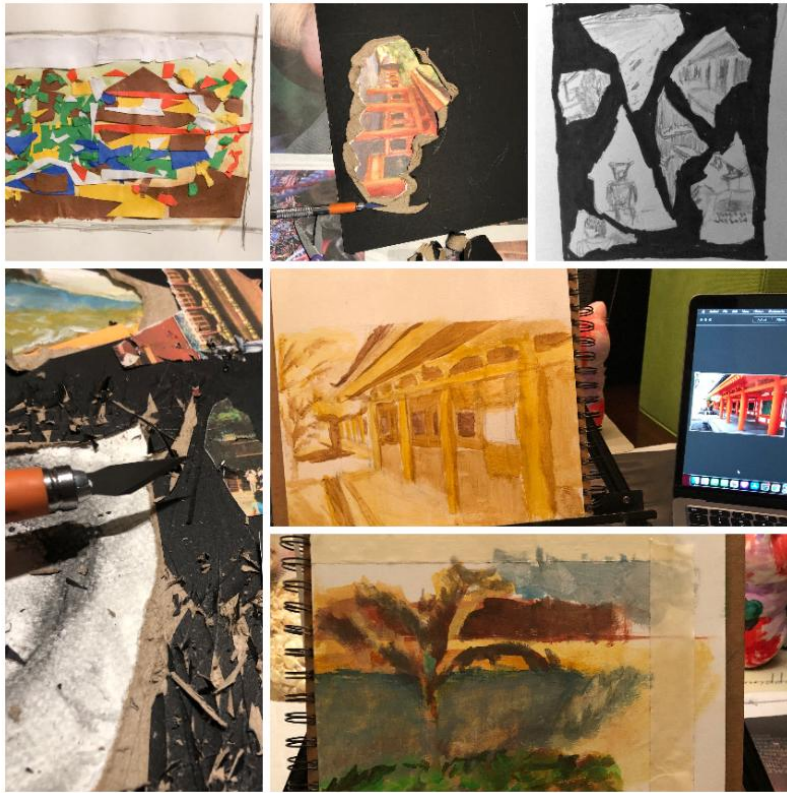


Image 3

Sustained Investigation

Height: n/a

Width: n/a

Material(s): acrylic, x-acto knife, colored paper, glue, tape, blackboard

Process(es): thumbnail sketches, destroying surface with x-acto knife, using travel photos as references



Image 4

Sustained Investigation

Height: 18 inches

Width: 23 inches

Material(s): acrylic, charcoal, colored paper, glue, chalk pastel, blackboard

Process(es): depicts fragments of memories, unity of the different elements reflects assimilation



Image 5

Sustained Investigation

Height: 16 inches

Width: 22 inches

Material(s): multimedia including magazines, acrylic, charcoal, string, feather

Process(es): experimentation with collage techniques, unified colors, golden ratio, like a travel scrapbook



Image 6

Sustained Investigation

Height: 24.5 inches

Width: 16.5 inches

Material(s): acrylic, chalk pastel

Process(es): layering landscape images on top of facial features

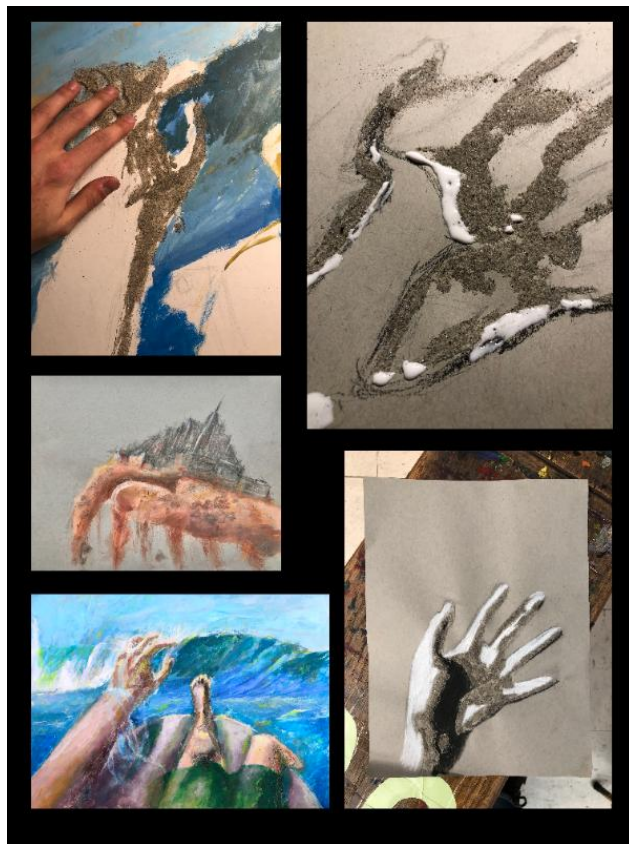


Image 7

Sustained Investigation

Height: n/a

Width: n/a

Material(s): sand, glue, charcoal, acrylic

Process(es): experimentation with sand to create texture and value



Image 8

Sustained Investigation

Height: 14 inches

Width: 18 inches

Material(s): acrylic, charcoal, micron, sand, digital painting

Process(es): references images combined in Photoshop, refined with digital painting

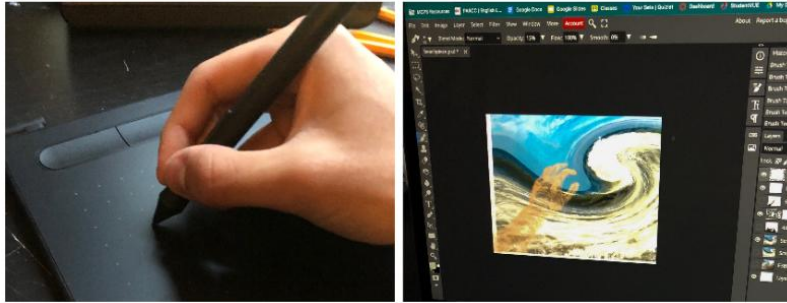
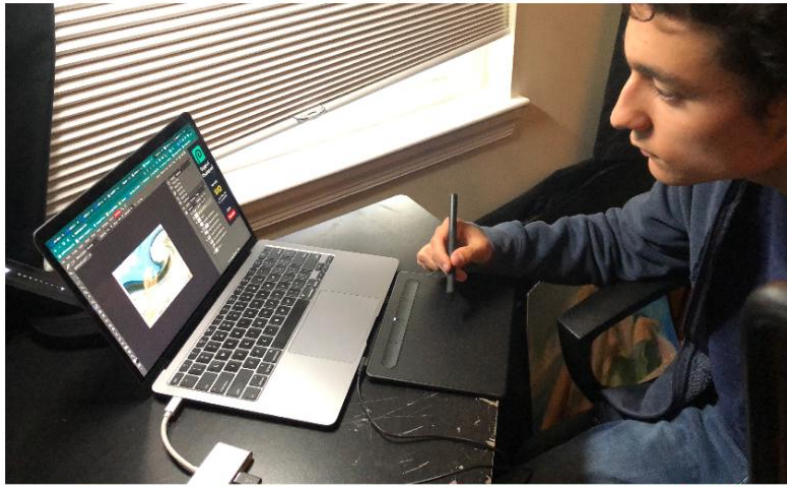


Image 9

Sustained Investigation

Height: n/a

Width: n/a

Material(s): digital painting

Process(es): background photo distorted using Photoshop, foreground and background painted on separate layers



Image 10

Sustained Investigation

Height: 8.42 inches

Width: 10.8 inches

Material(s): digital painting

Process(es): reference photo distorted with Photoshop and digitally painted over, evokes a dreamlike state



Image 11

Sustained Investigation

Height: 21 inches

Width: 25.5 inches

Material(s): acrylic, chalk pastel, photograph, glue, micron, sand

Process(es): painting extension of photo, 3-D rendering, traveling to escape responsibilities



Image 12

Sustained Investigation

Height: 20 inches

Width: 18 inches

Material(s): White charcoal, acrylic, sharpie on black paper, contrasts two different realities

Process(es): used big stencil of paper to paint in certain areas, desiring escape when reality disappoints

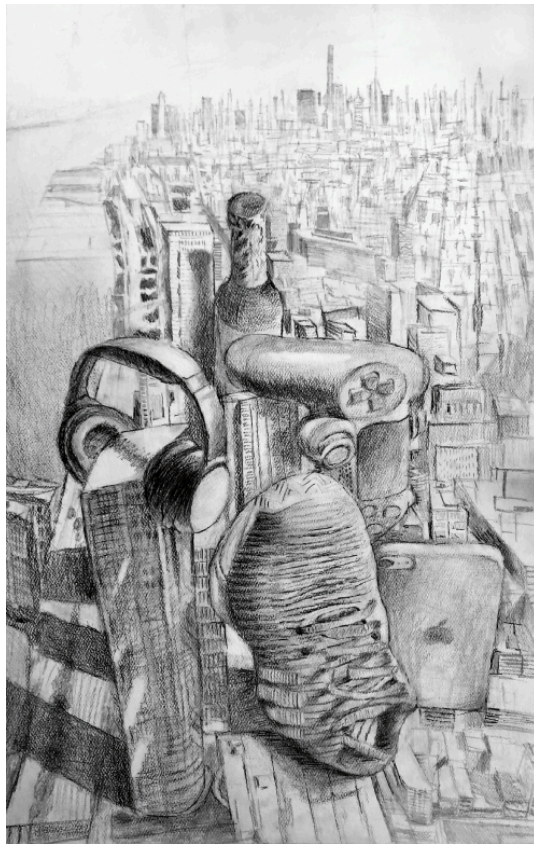


Image 13

Sustained Investigation

Height: 18 inches

Width: 11.5 inches

Material(s): drawing pencils, micron, sharpie

Process(es): created Photoshop reference, simulated accurate lighting to look realistic

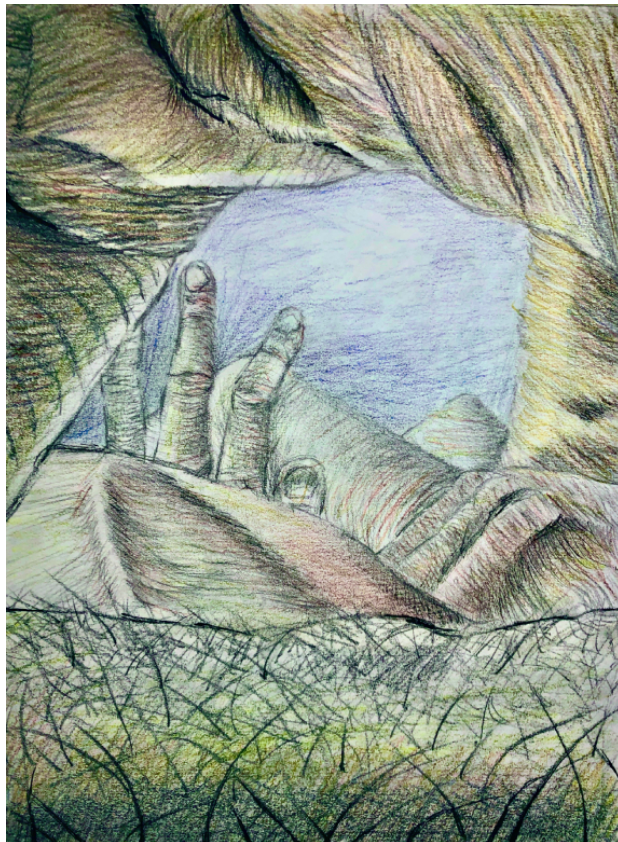


Image 14

Sustained Investigation

Height: 12 inches

Width: 9 inches

Material(s): drawing pencils, microns, sharpie, colored pencils

Process(es): created landscape out of body parts emphasizing texture and depth



Image 15

Sustained Investigation

Height: 18 inches

Width: 13 inches

Material(s): acrylic, micron, digital painting

Process(es): used reference image from my backyard, echoes the simplicity of earlier images

Sustained Investigation: Analytic Scoring Rubric and Score Rationale

Row C–Score 2

Analytic Scoring Rubric Row C: Materials, Processes, and Ideas		
1	2	3
Little to no evidence of visual relationships among materials, processes, OR ideas.	Visual relationships among materials, processes, OR ideas are evident .	Visual relationships among materials, processes, AND ideas are clearly evident and demonstrate synthesis .

Score Rationale

Visual relationships among materials, processes, and ideas are evident in this portfolio. Images 2, 4, 5, 6, and 8 connect the use of materials and processes. The works relate to written evidence illustrating traveling to show the artist “transformed from a naive infant into an introspective teenager.” For instance, in image 4, colored glue compositionally connects the overall surface and uses a double split complementary color scheme. However, the mark-making appears chaotic and does not reflect “assimilation” as cited in the written evidence.

The use of mixed media shows further development in image 8 by adding digital painting applications to situate the traveler in a vast sense of space. However, other attempts to create depth in images 10, 13, 14, and 15 show uninformed and inconsistent decision-making through the unsuccessful application of drawing media and failing to upload the successful uses of mixed media in previous works. The vibrant color schemes sometimes integrate color sensibilities uniting materials and processes. However, ideas are unrelated. The desaturation schemes in images 13 and 14 are uninformed attempts. Attempts to add desaturation schemes in images 13 and 14 are uninformed.



Image 8

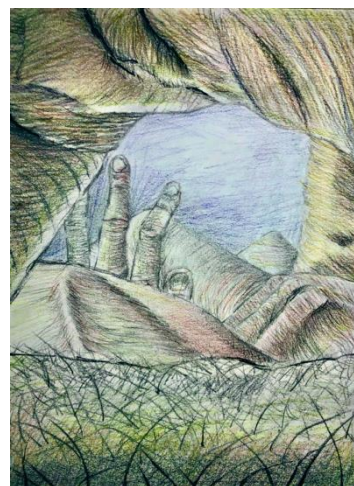


Image 14

Sustained Investigation Score: Row A: Score 2 • Row B: Score 2 • **Row C: Score 2** • Row D: Score 2