

## 2022 AP<sup>®</sup> Drawing

### Sustained Investigation

#### Row C–Score 1

#### Written Evidence

##### Writing Prompt #1:

Identify the question(s) or inquiry that guided your sustained investigation.

##### Writing Prompt #2:

Describe how your sustained investigation shows evidence of practice, experimentation, and revision guided by your question(s) or inquiry.

#### Student Response

What are the stressors and expectations Hispanic parents place on their children physically and mentally through their young age.

Using piece 1,2, and 3 you can see the mental state the children go through with the pressure and in 4 and 5 the physical restriction children have along with metal blocked placed by the parent. showing experiment from different points of view or connection through major ideas



## Image 1

Sustained Investigation

**Height:** 9 inches

**Width:** 6 inches

**Material(s):** Use procreate to collage references and create a scenery/lazy of sketching to show ponte las pilas

**Process(es):** Drawing references, easily moved, organized but using tech is seen as no doing anything



## Image 2

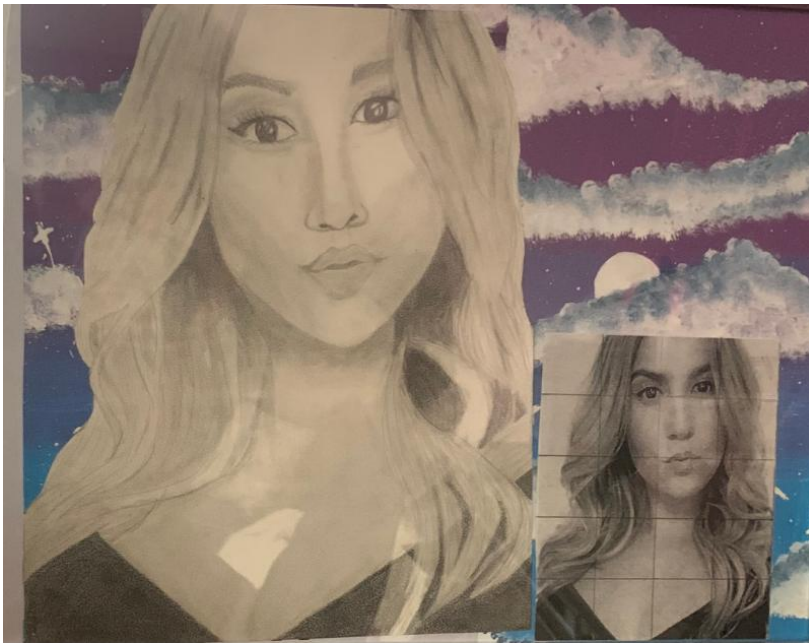
Sustained Investigation

**Height:** 7 inches

**Width:** 12 inches

**Material(s):** Pen for immovable mother attitude and strictness, pencil for flowing and changeable young girl

**Process(es):** Batteries were drawn coming out of back, ponte las pilas was engraved to me to push me further



### Image 3

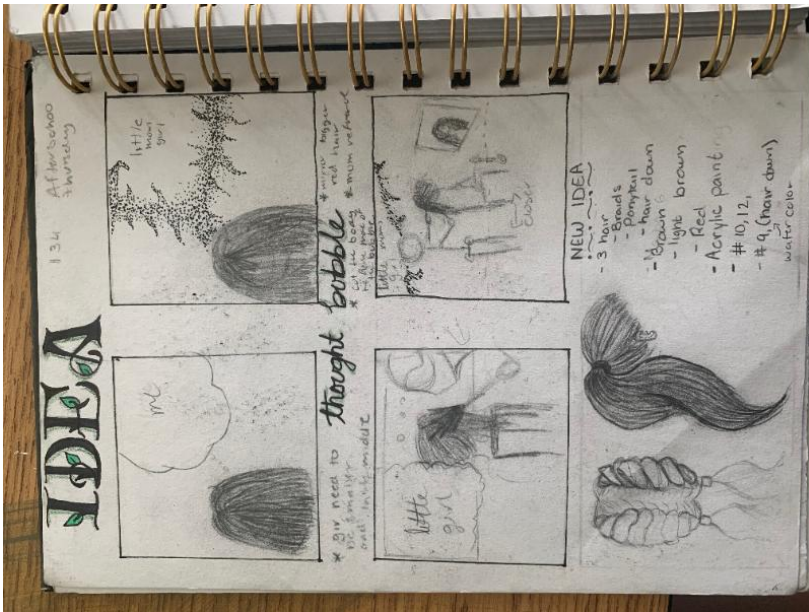
Sustained Investigation

**Height:** 4 inches

**Width:** 4 inches

**Material(s):** pencil to show how detail and thought out her placement

**Process(es):** the idea of having to surpass my sisters successes to meet my parents expectations



### Image 4

Sustained Investigation

**Height:** 5 inches

**Width:** 8.5 inches

**Material(s):** pencil to relate to change and connection between hair and meaning

**Process(es):** Sketching out ideas that relate to each other through a disagreement between parent and child



## Image 5

Sustained Investigation

**Height:** 8.5 inches

**Width:** 11 inches

**Material(s):** Gouache for precise highlights and texture

**Process(es):** the desired hair larger and in more vibrancy than the suggested styles  
Many layers of lines, shadows



## Image 6

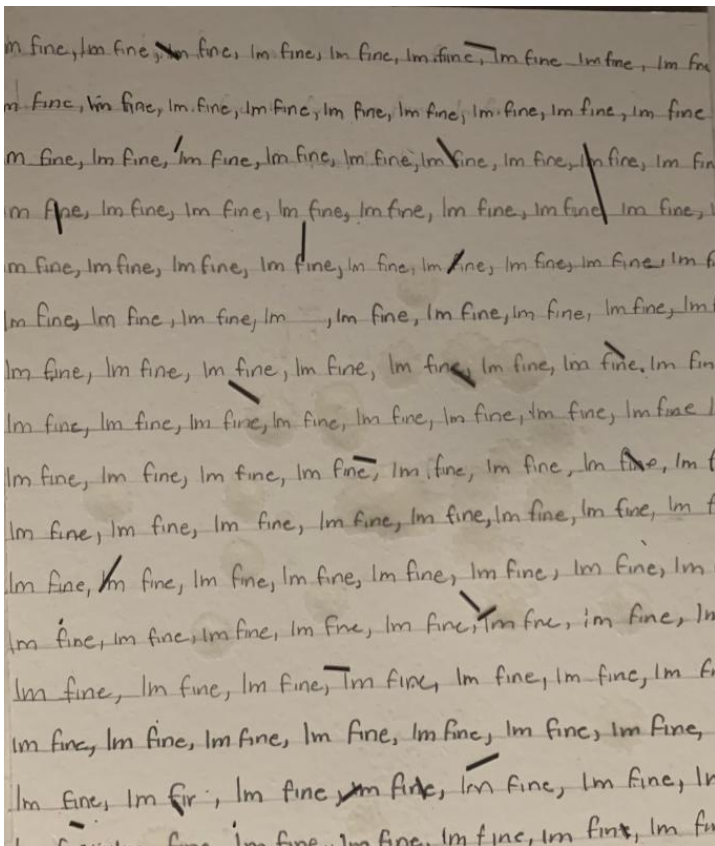
Sustained Investigation

**Height:** 5 inches

**Width:** 8.5 inches

**Material(s):** Gouache for highlights and pop of color  
using a pencil to show the truth and power of mother

**Process(es):** Using the red hair as a symbol to show connection between piece 4 but also a story of hope



## Image 7

Sustained Investigation

**Height:** 10 inches

**Width:** 9 inches

**Material(s):** sing pencil to represent a person and repeating Im fine

**Process(es):** Using a pencil with different forces showing the expectation the parents place on their child/ break



## Image 8

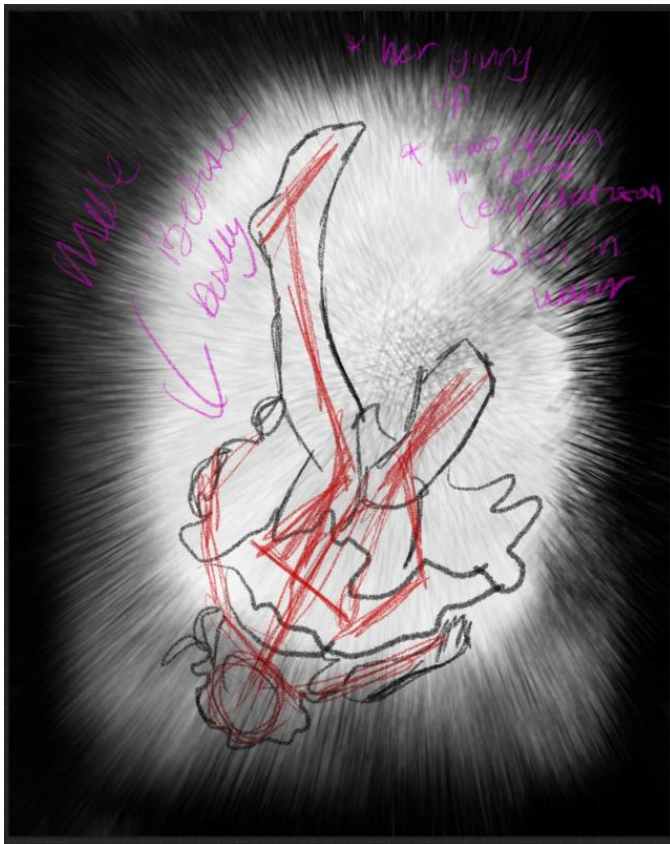
Sustained Investigation

**Height:** 4 inches

**Width:** 4 inches

**Material(s):** using watercolor to show i different perspective and feel to

**Process(es):** connecting piece 12 to this one with a new look to it. a new way of looking at a picture



## Image 9

Sustained Investigation

**Height:** 9 inches

**Width:** 6 inches

**Material(s):** I use procreate to execute the idea in my head

**Process(es):** To experiment with different perspectives of piece number 12



## Image 10

Sustained Investigation

**Height:** 9 inches

**Width:** 6 inches

**Material(s):** I use procreate to execute the idea in my head

**Process(es):** the idea of drowning under exceptions and not being able to get away



### Image 11

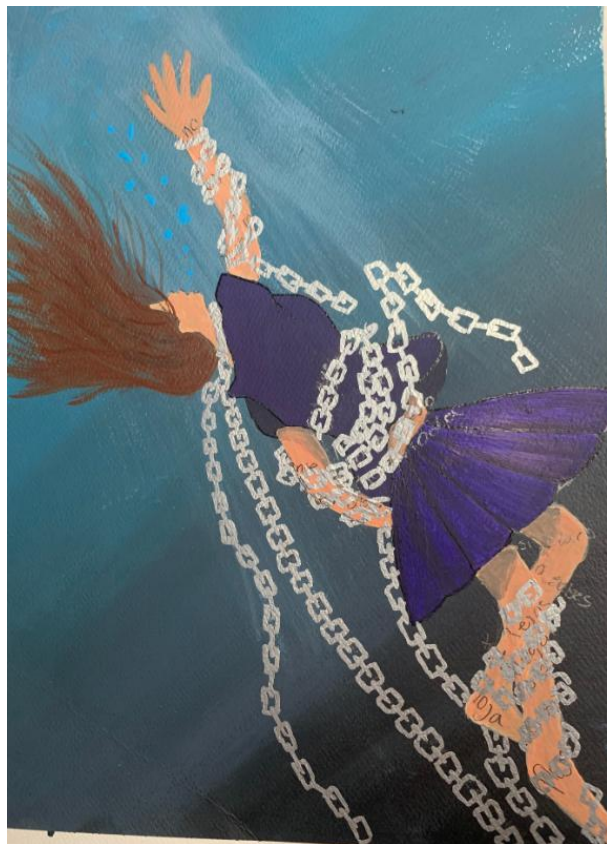
Sustained Investigation

**Height:** 1 inches

**Width:** 1 inches

**Material(s):** using a pencil to show chains holding her down and not letting her breath

**Process(es):** using the hurtful comments her mom tells her to keep her down and unable to get away.



### Image 12

Sustained Investigation

**Height:** 11 inches

**Width:** 8 inches

**Material(s):** watercolors used to show flowing strokes and marker as set and stone chains

**Process(es):** not being able to get away and drowning under pressure from expectations that are too much to handle



### Image 13

Sustained Investigation

**Height:** 11 inches

**Width:** 11 inches

**Material(s):** Color pencil used to show transparency when switching between LED lights

**Process(es):** used reference, layered two colors on top of each other with pose in embrace



### Image 14

Sustained Investigation

**Height:** 11 inches

**Width:** 11 inches

**Material(s):** red color pencil showing in blue LED. The side of her that tries to help herself through the pain

**Process(es):** layered two colors on top of each other and switching lights to show the side that shes alone/broken





## Image 15

Sustained Investigation

**Height:** 11 inches

**Width:** 11 inches

**Material(s):** Blue color pencil showing in red LED. The side of her that her mom wants

**Process(es):** layered two colors on top of each other and switching lights to show the side her mother sees

# Sustained Investigation: Analytic Scoring Rubric and Score Rationale

## Row C–Score 1

Analytic Scoring Rubric Row C: Materials, Processes, and Ideas		
1	2	3
Little to no evidence of <b>visual relationships</b> among materials, processes, <b>OR</b> ideas.	<b>Visual relationships</b> among materials, processes, <b>OR</b> ideas are <b>evident</b> .	<b>Visual relationships</b> among materials, processes, <b>AND</b> ideas are <b>clearly evident</b> and <b>demonstrate synthesis</b> .

## Score Rationale

This portfolio demonstrates little to no evidence of visual relationships among materials, processes, or ideas. The written evidence states, “What are the stressors and expectations Hispanic parents place on their children physically and mentally through their young age.” However, the images show no visual relationships between materials, processes, and ideas. For example, image 3’s written evidence describes “the idea of having to surpass my sister’s successes to meet my parents expectations.” It juxtaposes a cloudscape with portraiture, but the materials and processes do not unite surface applications or the use of light and shade. The centered, static composition does not relate to the emotional weight of the idea. In image 4, practice hair renderings creating “vibrancy” are moderately successful, but the red contrasts in image 5 do not communicate “red hair as a symbol to show connection.”

Images 8, 11, and 12 depict the idea of using representational and symbolic chains encasing a figure to “keep her down” and show “drowning under pressure,” but an insufficient depiction of form and space shows unclear relationships between the figures and objects. Furthermore, the additional process of adding background gradients does little to enhance space and enhances the uninformed use of acrylic paints. Overall, there is no sustained use of media throughout the portfolio, and there is little connection to process or idea, so this portfolio scored a 1 for Row C.



Image 5



Image 12