

2022 AP[®] Drawing

Sustained Investigation

Row B—Score 3

Written Evidence

Writing Prompt #1:

Identify the question(s) or inquiry that guided your sustained investigation.

Writing Prompt #2:

Describe how your sustained investigation shows evidence of practice, experimentation, and revision guided by your question(s) or inquiry.

Student Response

When is the fine line between abundance and overkill crossed? My work revolves around this question, specifically focusing on overconsumption of advertising, technology/screens, social media, food, beauty standards etc. I've realized that many types of overconsumption had taken control over me, and by exploring these issues in my artwork I began to take back control. In my work I investigate questions such as "in what ways does overconsumption accumulate internally and externally around us everyday" and "what is the emotional cost of overconsumption?"

My SI progresses from depicting outwards (readily visible) overconsumption to analyzing internal (invisible) effects as well. I juxtapose saturated colors to invoke the overwhelming sense I feel from overconsumption and experiment with using chaotic colors to depict the harm of alluring ads and addictive impulse purchases (1,4,10). I revise several works by increasing contrast lighting (7,9,13,15) to spotlight how consuming in excess causes emotional conflict. I practice using self portraits (6,7,13) to reflect on my internal consequences of such a mindset, such as mental exhaustion and a loss of self-identity.



Image 1

Sustained Investigation

Height: 12 inches

Width: 9 inches

Material(s): Acrylic on paper, colored pencils to add busy-ness and detail, gouache for saturated colors.

Process(es): Research fast fashion and teen opinions, chose triangle composition, sketch, paint, pencil on top



Image 2

Sustained Investigation

Height: NA

Width: NA

Material(s): Watercolor to establish warm tone, marker to write key themes, pencil to sketch

Process(es): Visualized imagery on spread, wrote key words, revised from pale colors to vivid



Image 3

Sustained Investigation

Height: NA

Width: NA

Material(s): Digitally made palette, digital contrast to increase intensity, ref of self, sketchbook composition.

Process(es): Thumbnail shadow/color dynamics, fisheye lens, rough sketch, chose light source to highlight figure



Image 4

Sustained Investigation

Height: 11.3 inches

Width: 14.5 inches

Material(s): Acrylic paint, gouache, colored pencils on canvas.

Process(es): Use fisheye to distort imagery, paint w looser brush to show loss of control, hand reach in fridge.



Image 5

Sustained Investigation

Height: NA

Width: NA

Material(s): Sketchbook to define style, digital first draft, photos of revised idea and composition options.

Process(es): Revise first piece, research master artist to incorporate composition, model self.



Image 6

Sustained Investigation

Height: 12 inches

Width: 16 inches

Material(s): Acrylic paint on canvas paper, colored pencils, pen.

Process(es): Posed self, painted w loose brush, refine details, draw attn to obsession w makeup and looks.



Image 7

Sustained Investigation

Height: 14 inches

Width: 11 inches

Material(s): Warm acrylic paint shows external, cool paint for internal turmoil, colored pencils on wood board.

Process(es): Photograph self emotions, paint strong warm vs cool tones, add expression to show loss of identity.

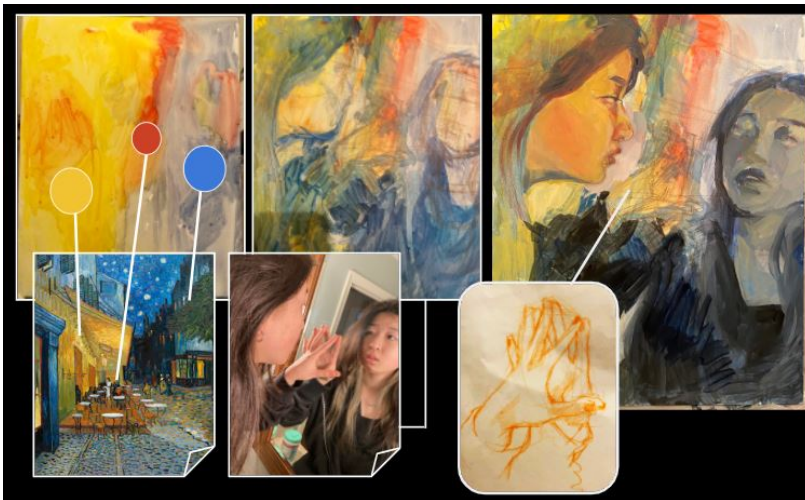


Image 8

Sustained Investigation

Height: NA

Width: NA

Material(s): Van-gogh color inspiration, abstract base colors, analyzed hand anatomy in sketch.

Process(es): Referenced color/emotion relationships, practiced with sketch then paint for hand.



Image 9

Sustained Investigation

Height: 18.1 inches

Width: 12.6 inches

Material(s): Digital work using procreate and apple pencil on iPad

Process(es): Pose in cart to show a trapped mindset, abstract shelves to invoke disoriented feel, cast spotlight



Image 10

Sustained Investigation

Height: 16 inches

Width: 20 inches

Material(s): Acrylic on canvas, faded receipts to rep consequences and regret, markers to give 2D ad style, glue.

Process(es): Sketch to rep burden of buyers guilt, collage receipts, render figure, ref household clutter 4 chaos



Image 11

Sustained Investigation

Height: NA

Width: NA

Material(s): Mod-podge receipts, painted over to blend, magazine cut-out key words, color drips w/ acrylic

Process(es): Research, experimented with collage of magazine ads and past receipts, add base colors

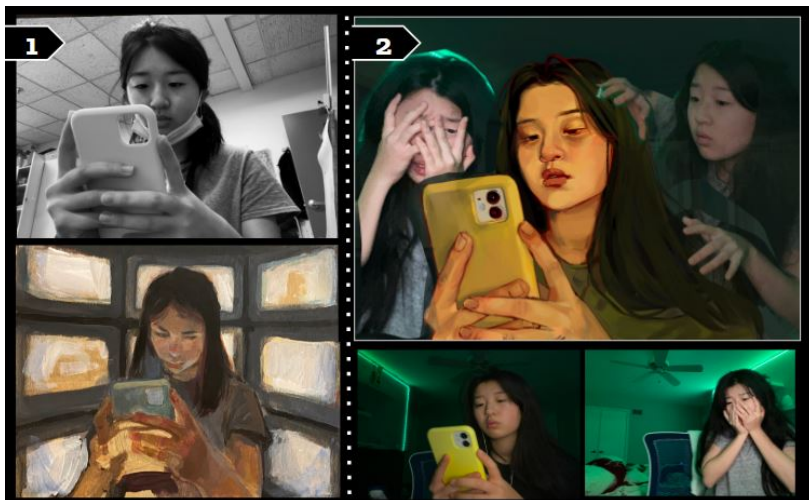


Image 12

Sustained Investigation

Height: NA

Width: NA

Material(s): Photos of self at angles, acrylic version on wood, overlaid images, digital mockup with procreate.

Process(es): Find composition, painted v1, restart digital, assemble refs, incorp personal emotions about screen



Image 13

Sustained Investigation

Height: 30.8 inches

Width: 23.2 inches

Material(s): Digital work using procreate and apple pencil on iPad

Process(es): Model self experiencing screen addiction, rendered in muted tones, overlay cool phone light.

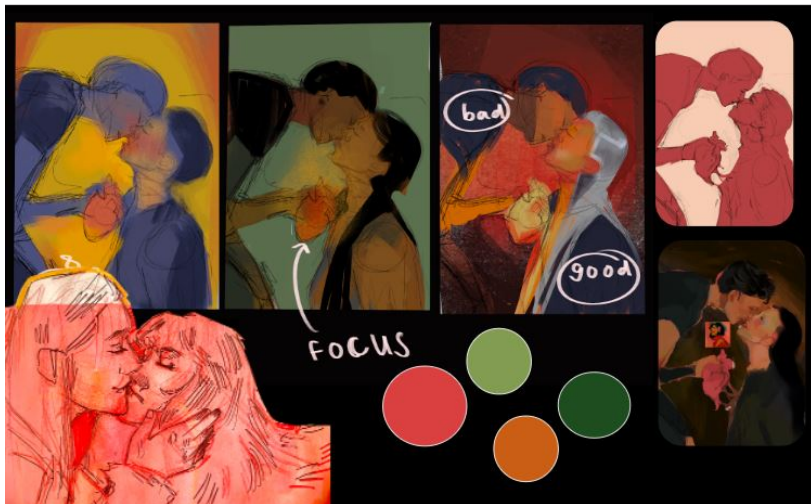


Image 14

Sustained Investigation

Height: NA

Width: NA

Material(s): Procreate software on iPad, love sketch cutout from sketchbook, contrast sketches, color palettes

Process(es): Brainstorm concept, experimented with color variations, set shadow silhouettes, chose colors, paint.



Image 15

Sustained Investigation

Height: 8.26 inches

Width: 11.7 inches

Material(s): Digital work using procreate and apple pencil on iPad

Process(es): Sketch composition, set contrast between black/white clothes, spotlight attention to heart, muted bg

Sustained Investigation: Analytic Scoring Rubric and Score Rationale

Row B–Score 3

| Analytic Scoring Rubric Row B: Practice, Experimentation, and Revision | | |
|--|---|---|
| Writing Prompt 2: <i>Describe how your sustained investigation shows evidence of practice, experimentation, and revision guided by your question(s) or inquiry.</i> | | |
| 1 | 2 | 3 |
| Visual evidence of practice, experimentation, OR revision; however, visual evidence does not relate to a sustained investigation. | Visual evidence of practice, experimentation, OR revision relates to the sustained investigation. AND Written evidence relates to the visual evidence of practice, experimentation, OR revision. | Visual evidence of practice, experimentation, AND revision demonstrates development of the sustained investigation. AND Written evidence describes how the sustained investigation shows evidence of practice, experimentation, OR revision. |

Score Rationale

The visual evidence of practice, experimentation, AND revision demonstrates clear development of the artist's inquiry into the “fine line between abundance and overkill.” The portfolio demonstrates clear and informative practice to further develop artistic language through numerous media and approaches. The use of composite slides is informative and slightly confusing. Although they offer clear insight into the practices and planning for the work, more visual information is provided than necessary. The open sketchbook seen in image 2 provides a wonderfully clear insight into the planning and practice of image 1. The sketchbook and large detail of the unrefined painting give a clear example of the artist's process, yet the numerous progression images are unnecessary. The image of the underpainting, planning for 4-pt perspective, and sketch in image 3 provide clear examples of how the artist's process and practice lead to revision as the work progresses. However, the additional images of the digital color blocking and photo reference are informative but unnecessary for the viewer to understand how the artist's practice leads to revision in image 4.

Image 7 is a clear example of practice, experimentation, and revision leading to synthesis in the artist's inquiry as it shows the experimentation with a bold, warm yellow light, guiding the artist to explore this light application with digital media (image 9). This thoughtful transition between analog and digital practices provides rich visual evidence of experimentation and revision in connection to a singular artistic concept and interest. Although image 8 provides thoughtfully organized and helpful information about the progress and development of the painting, the historic color inspiration is less informative than the work itself. The large detail in image 11 demonstrates a connection between the experimentation with collaged receipts to communicate the painting's idea of overspending and thoughtful compositional revision. The planning seen in image 12 continues to show visual development

and discovery of the connection between digital practices and the artists' use of light to render form and “invoke the overwhelming sense I feel from overconsumption” through saturated color. Images 14 and 15 further exemplify this thoughtful investigation into the “emotional conflict” created by overconsumption conveyed through the sophisticated use of color, mark-making, and light/shade.

The written evidence for this portfolio clearly describes **how** the sustained investigation shows evidence of practice, experimentation, and revision. Further, the artist's writing signifies progression in their work in service of their idea through “juxtaposed saturated color” and revision through “contrast lighting to spotlight how consuming in excess causes emotional conflict.” The artist specifies the connection between their practice of using self-portraits to reflect on the “loss of self-identity” as a consequence of excess consumption. Each work is further informed through the artist's description of the materials and processes of each image to better inform the viewer of specific conceptual relationships between elements of each work and their idea.



Image 3

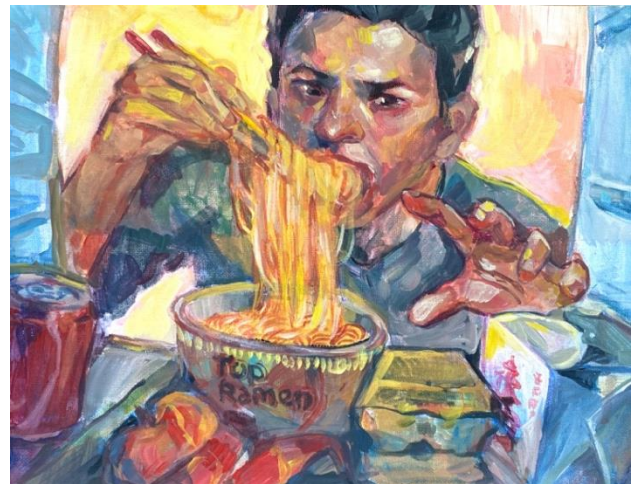


Image 4

Sustained Investigation Score: Row A: Score 3 • **Row B: Score 3** • Row C: Score 3 • Row D: Score 3