

## 2022 AP<sup>®</sup> Drawing

### Sustained Investigation

#### Row B—Score 2

#### Written Evidence

##### Writing Prompt #1:

Identify the question(s) or inquiry that guided your sustained investigation.

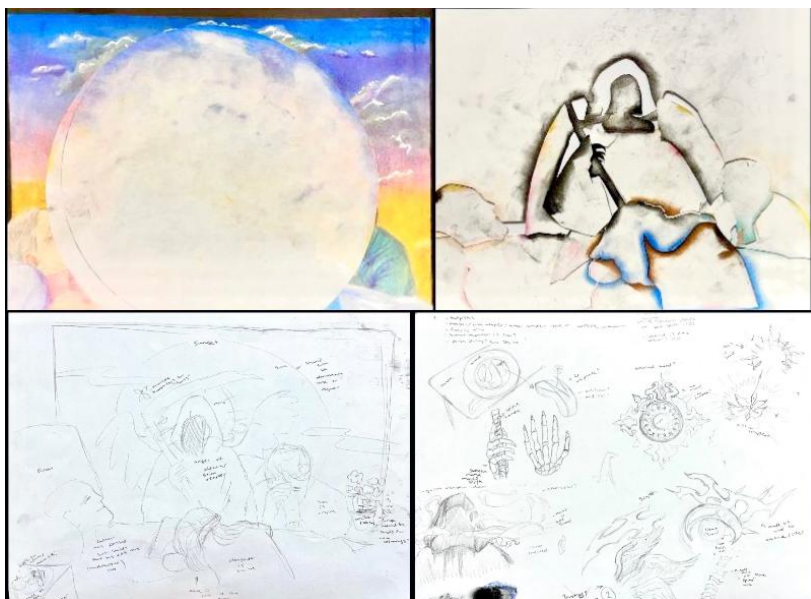
##### Writing Prompt #2:

Describe how your sustained investigation shows evidence of practice, experimentation, and revision guided by your question(s) or inquiry.

#### Student Response

When my grandpa was brought to a hospital from a suicide depressive episode, he began looking at his photo albums. As he reflected on his most memorable moments, I began to question what are the happiest memories through each milestone in life. I hoped to explore these pivotal happy moments that are piled up, but never faded through time to remind my grandpa of all the times he's been the happiest.

My grandpa had a recent medical crisis that caused him to fall into depression so I asked my family, mainly him, about fond memories that held strong emotional ties. Using watercolor (piece 6, 11 & 13) for youthful wash stained on paper shows its fixity in his memories. For an aged stage of life, I used acrylic paint (piece 9 & 15) to show the recentness & adventure in romantic relationships. Overall I used crosshatching to give a stitched texture (piece 2, 4, 6, 9, 11, 13) to convey how all of these happy memories are held together. This will remind him of times that made him glad to be alive



## Image 1

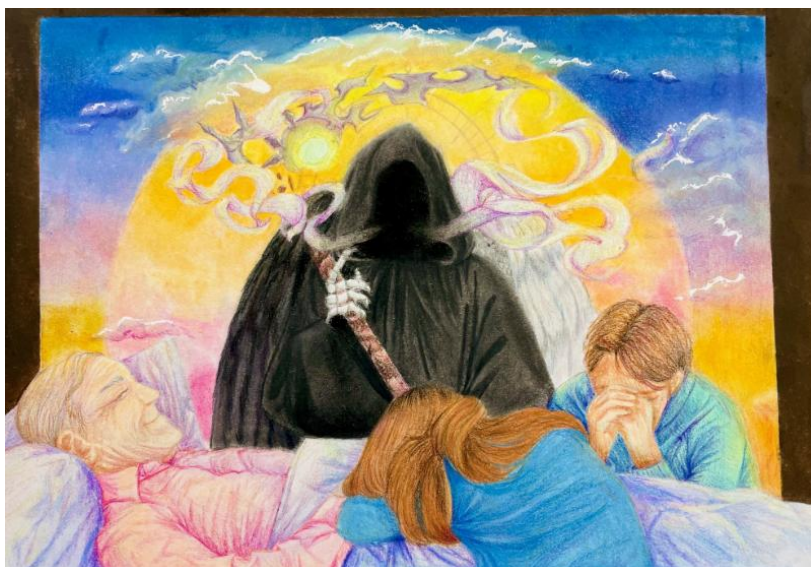
Sustained Investigation

**Height:** 8.5 inches

**Width:** 11 inches

**Material(s):** I created sketches with pencil and used a final sketch as a stencil for clearer and clean lines

**Process(es):** Using soft pastel I blended colors to provide a smooth texture of a dreamy state.



## Image 2

Sustained Investigation

**Height:** 8.5 inches

**Width:** 11 inches

**Material(s):** Using mainly soft pastel to convey a fuzzy appearance to the scene with color pencil to detail.

**Process(es):** I used light pressure blending to lighten the sad scene that its texture is softened as a memory







## Image 5

Sustained Investigation

**Height:** 10 inches

**Width:** 8 inches

**Material(s):** A process image I sketched with graphite pencil and slowly layered colors on with water color

**Process(es):** Using water filled brushes, I let the warm colors bleed into each other to convey love being spread



## Image 6

Sustained Investigation

**Height:** 10 inches

**Width:** 8 inches

**Material(s):** I used watercolor to give the image a stained appearance of age with minor color pencil for details.

**Process(es):** Soft brush strokes with warm toned colors shows a nostalgic childhood memory forever stained in time.



## Image 7

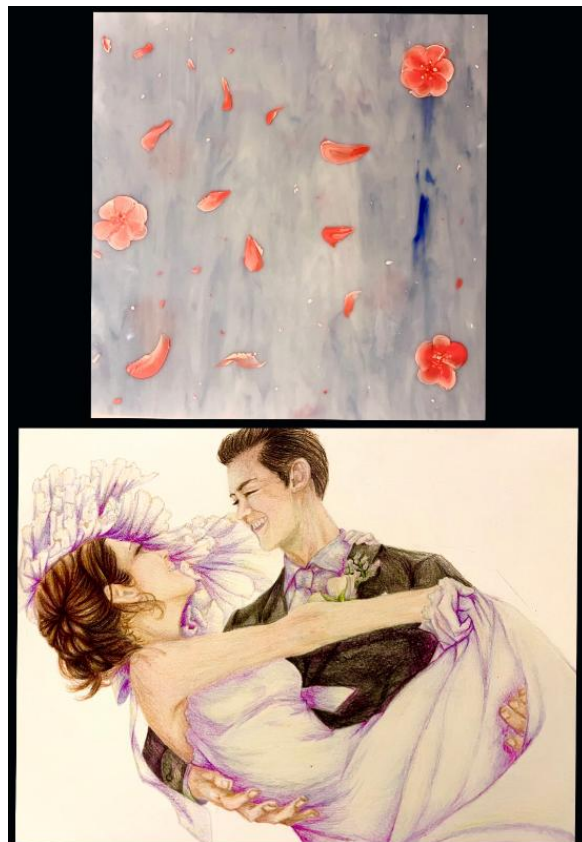
Sustained Investigation

**Height:** 9 inches

**Width:** 12 inches

**Material(s):** I sketched in pencil to experiment with different poses and ideas of a happy wedding day.

**Process(es):** slowly began hatching colors from dark to light to create value aspect in the hair making it unified



## Image 8

Sustained Investigation

**Height:** 12 inches

**Width:** 12 inches

**Material(s):** I used acrylic painted flowers falling down stained glass and colored the newlyweds in color pencil

**Process(es):** Putting pink and white split in half on a brush, I made random squiggles as patterns for flowers





## Image 9

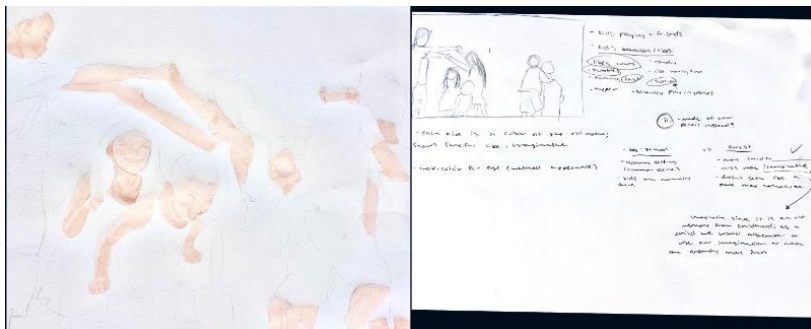
Sustained Investigation

**Height:** 12 inches

**Width:** 12 inches

**Material(s):** I used bright colored pencils to emphasize movement of the newlyweds on paint onto a stained glass

**Process(es):** coloring clothes more whimsical with crosshatching texture showed a more fanciful recollected memory



## Image 10

Sustained Investigation

**Height:** 9 inches

**Width:** 12 inches

**Material(s):** Using graphite pencil I noted down several ideas and its meaning to sketch over to my final

**Process(es):** colors blend into eachother starting with wet paper and stippling color in darker areas for staining



## Image 11

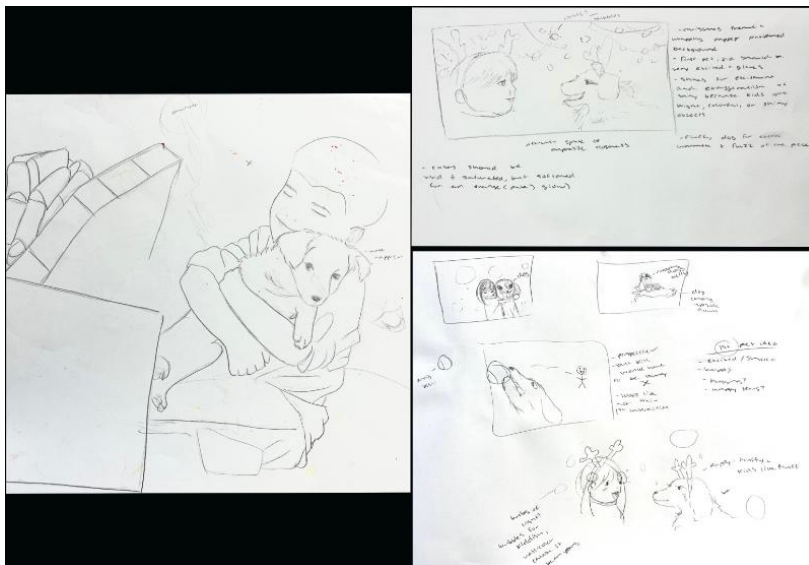
Sustained Investigation

Height: 9.25 inches

Width: 12.5 inches

**Material(s):** Water color and acrylic paint for a vivid but washed memory through time, detailed by color pencil.

**Process(es):** contouring lines to highlight immature rigged appearance in childhood first friendships permanence



## Image 12

Sustained Investigation

Height: 9 inches

Width: 12 inches

**Material(s):** Sketching ideas with a hybrid of hatching and scumbling for creating furry texture with graphite

**Process(es):** Comparing the two designs I chose the simpler one for how surprised, yet excited the kid would be





## Image 13

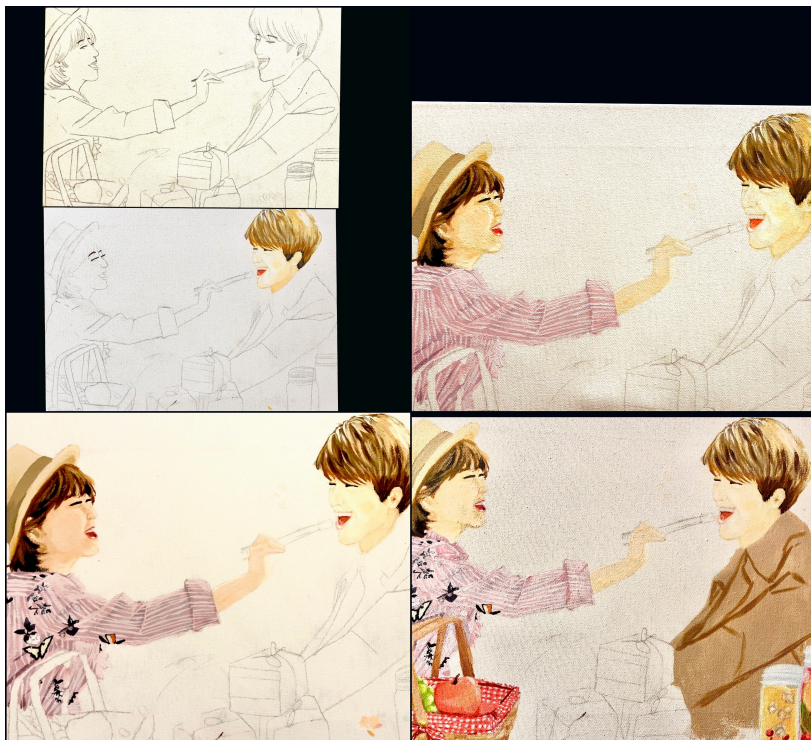
Sustained Investigation

**Height:** 8.5 inches

**Width:** 11 inches

**Material(s):** I used contouring lines that grew darker by putting lines closer with color pencils and watercolor.

**Process(es):** Highlighting expressions of a kid and dog's with shine to show a kid's excitement of their first pet



## Image 14

Sustained Investigation

**Height:** 12 inches

**Width:** 16 inches

**Material(s):** I used graphite pencil to sketch onto canvas and acrylic paint for strong vivid colors

**Process(es):** Scumbling colors and layering with slight hatching on top to give a blended and unified textures





## Image 15

Sustained Investigation

**Height:** 12 inches

**Width:** 16 inches

**Material(s):** I used acrylic paint to exaggerate colors in a recollection of a first date or love.

**Process(es):** scumbling white for random movements in the clouds to give a more textured fluff in the sky

# Sustained Investigation: Analytic Scoring Rubric and Score Rationale

## Row B–Score 2

Analytic Scoring Rubric Row B: <b>Practice, Experimentation, and Revision</b> <b>Writing Prompt 2:</b> <i>Describe how your sustained investigation shows evidence of practice, experimentation, and revision guided by your question(s) or inquiry.</i>		
1	2	3
Visual evidence of practice, experimentation, <b>OR</b> revision; however, visual evidence <b>does not relate</b> to a sustained investigation.	Visual evidence of practice, experimentation, <b>OR</b> revision <b>relates</b> to the sustained investigation.  <b>AND</b>  Written evidence <b>relates</b> to the visual evidence of practice, experimentation, <b>OR</b> revision.	Visual evidence of practice, experimentation, <b>AND</b> revision <b>demonstrates development</b> of the sustained investigation.  <b>AND</b>  Written evidence <b>describes how</b> the sustained investigation shows evidence of practice, experimentation, <b>OR</b> revision.

## Score Rationale

The use and organization of most composite images (1, 5, 7, 10, and 14) provide clear evidence of planning and progress in this artist's work but do not enhance or inform the viewer of the artistic practice and experimentation seen in the finished works. While the progress images show us how the artist applied their media sequentially, these composites do not show examples of practice or experimentation to inform the development of the idea or work. Rather than composite images to show "progress," the portfolio would benefit from more evidence of practice in application and ideation, as seen in image 3. Further, the composite progress images do not provide clear examples of revision or correction throughout the sustained investigation other than in images 7 and 12, where we see examples of compositional planning and decision-making.

The visual evidence provided in images 2, 3, 4, and 6 demonstrates reflective practice with various media, from pastel and colored pencil to graphite and watercolor. Finally, we see the coalescence of these materials and techniques merge in image 9, where the artist combines these previous practices into an experimental piece with colored pencil on paper that they mounted to painted glass.

The written evidence for this portfolio relates to the work shown through brief descriptions of the conceptual relationships between the media and the idea behind the artist's sustained investigation. For example, the artist mentions the symbolic use of crosshatching as a technique to show how "memories are held together." However, while this written evidence relates to the visual evidence of the artist's choice of materials, it does not describe how the sustained investigation shows practice, experimentation, or revision.





Image 2



Image 3

Sustained Investigation Score: Row A: Score 2 • **Row B: Score 2** • Row C: Score 2 • Row D: Score 2