

2022 AP[®] Drawing

Sustained Investigation

Row A—Score 2

Written Evidence

Writing Prompt #1:

Identify the question(s) or inquiry that guided your sustained investigation.

Writing Prompt #2:

Describe how your sustained investigation shows evidence of practice, experimentation, and revision guided by your question(s) or inquiry.

Student Response

How does the outside world perceive the circus?
How will an emotional style help me portray the life of circus people?
Will emotionalism create a strong mood over each piece?

Through out the entire sustained investigation process I have really enjoyed experimenting with several different perspectives and color palettes. I focused on bringing the character or scene to life by creating a very expressionistic face, and by using colors that complement each other, as seen on slide 14 where almost ever color is complementing the one next to it to catch the viewers eye. I believe emotionalism was critical to my sustained investigation's success, because it helps to engage the audience along with making the consumer curious about the character and who they are.



Image 1

Sustained Investigation

Height: 13 inches

Width: 3 inches

Material(s): Water color paper, water color, and colored pencils.

Process(es): Done to see what I could create in 30 minutes. I used movement to create a silly mood.



Image 2

Sustained Investigation

Height: 4.25 inches

Width: 4.25 inches

Material(s): Gessoed canvas, oil paints.

Process(es): I tried to explore with texture on the canvas and finding what layering lots of oil paint does.



Image 3

Sustained Investigation

Height: 12 inches

Width: 8.5 inches

Material(s): Toned sketch paper, fine tip pen, colored pencil, and white acrylic paint for highlights.

Process(es): I want this piece to make people create a story in their head. Kept the background busy and full.



Image 4

Sustained Investigation

Height: 16.5 inches

Width: 3.75 inches

Material(s): Water color paper, water color, hot glue, and white tool.

Process(es): I again wanted to explore texture, but I also wanted to focus on the mood the body position creates.



Image 5

Sustained Investigation

Height: 12.5 inches

Width: 11 inches

Material(s): Water color paper, water color, white acrylic paint.

Process(es): I focused on color, and emphasis with this piece. Also wanted to play with water color.

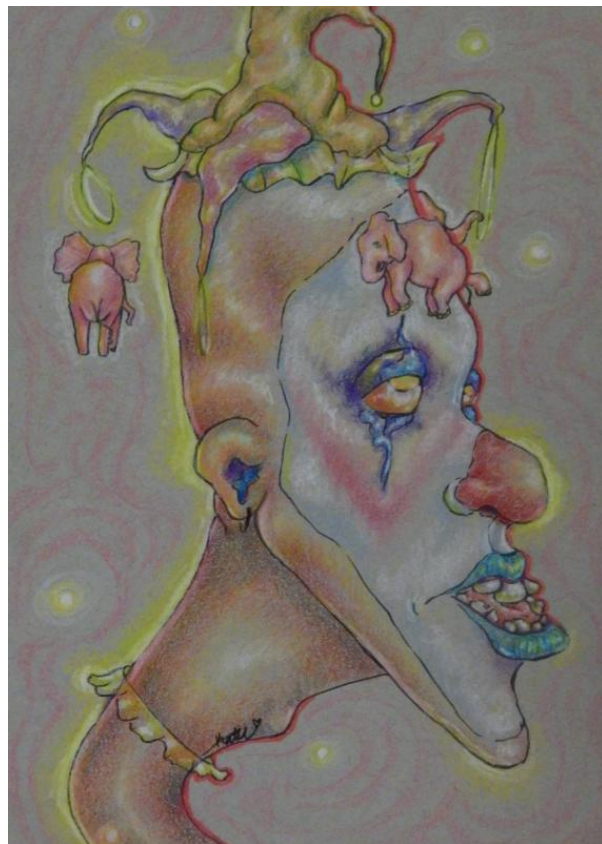


Image 6

Sustained Investigation

Height: 8.5 inches

Width: 6 inches

Material(s): Toned sketch paper, colored pencils.

Process(es): Learned how to really use color pencils in a way that creates different texture and colors.



Image 7

Sustained Investigation

Height: 20 inches

Width: 15 inches

Material(s): Poster board, acrylic paint, spray paint, stencils, posca markers.

Process(es): I wanted to create a visual representation of how the senses feel at a circus or carnival.



Image 8

Sustained Investigation

Height: 8 inches

Width: 10 inches

Material(s): Have stretched canvas, gesso.

Process(es): Emphasis on how odd and eerie circuses are. What they might look like through childrens eyes.



Image 9

Sustained Investigation

Height: 13 inches

Width: 9 inches

Material(s): Toned sketch paper, colored pencil, glue.

Process(es): I used color and movement to create a character that intrigues you, Also focused on placement.

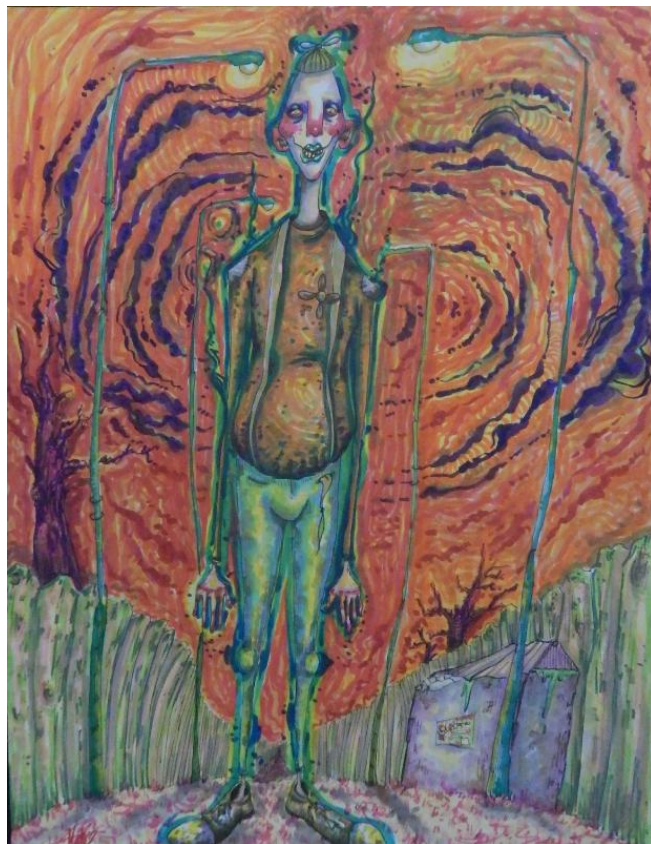


Image 10

Sustained Investigation

Height: 13.5 inches

Width: 10.5 inches

Material(s): White sketch paper, alcohol markers, fine tip pen.

Process(es): Creating mood and growing my skills with drawing backgrounds. Being more intentional with space.



Image 11

Sustained Investigation

Height: 8.5 inches

Width: 6 inches

Material(s): Toned sketch paper, colored pencil.

Process(es): I focused on perspective and how that might effect the whole mood of the piece. Playing with color.

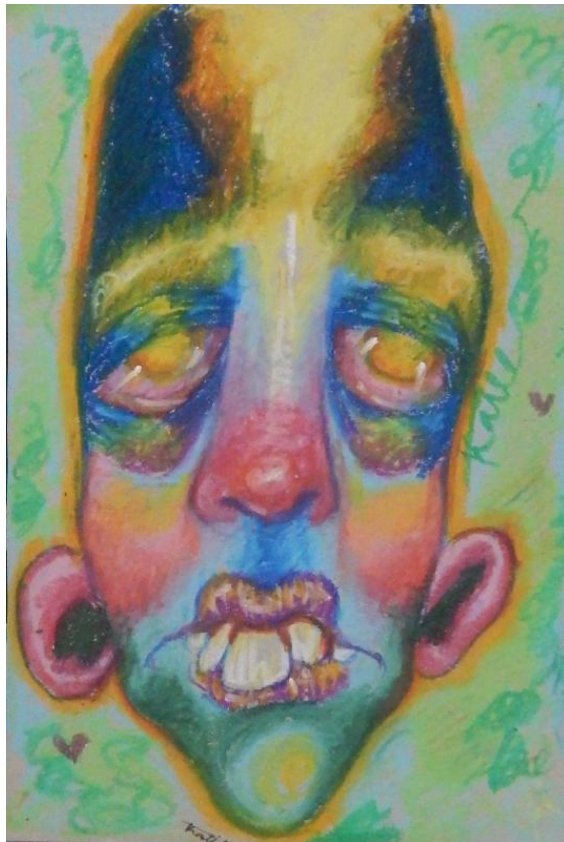


Image 12

Sustained Investigation

Height: 8.5 inches

Width: 5.5 inches

Material(s): Toned sketch paper, oil pastels.

Process(es): I needed to sketch and to just explore different mediums with my investigation.



Image 13

Sustained Investigation

Height: 12 inches

Width: 9 inches

Material(s): Toned sketch paper, ball point pens, fine tip pen.

Process(es): This was a sketch of slide 4. Helped me focus on composition.



Image 14

Sustained Investigation

Height: 20 inches

Width: 16 inches

Material(s): Gessoed canvas, oil paint.

Process(es): I focused on color, and how I can manipulate it to create emphasis and movement.



Image 15

Sustained Investigation

Height: 20 inches

Width: 13 inches

Material(s): Cardboard, lights, fabric, glue, acrylic paint, glossy mod podge.

Process(es): Let my creativity push me through this piece. Along with showing what a spot light feels like.

Sustained Investigation: Analytic Scoring Rubric and Score Rationale

Row A–Score 2

Analytic Scoring Rubric Row A: Inquiry		
Writing Prompt 1: <i>Identify the question(s) or inquiry that guided your sustained investigation.</i>		
1	2	3
Written evidence identifies an inquiry, but visual evidence does not relate to that inquiry. OR Written evidence does not identify an inquiry.	Written evidence identifies an inquiry that relates to the sustained investigation. AND Visual evidence demonstrates the sustained investigation.	Written evidence identifies an inquiry that guides the sustained investigation. AND Visual evidence demonstrates the sustained investigation.

Score Rationale

The written evidence relates to an inquiry about how the “outside world perceive the circus?” and “How will an emotional style help me portray the life of circus people?” Written evidence relates to the visual characteristics of the style consistently observed throughout the portfolio.

Images 1, 2, 4, 6, 7, and 12 relate to the inquiry questions by showing circus people portraying emotions, but the engagement with surrounding environments does not clarify the reasons for the chosen emotions. In images 8, 14, and 15, we see figures together in physical and psychological spaces, but the situations and interactions between the figures remain unclear. The preponderance of evidence in the material(s) and process(es) statements focus on descriptive use of the elements (texture, space, color) and principles (movement, emphasis) but do not lead the Sustained Investigation or address the specific emotional qualities the artist intended to create. The body of works utilizes a formalist approach depicting clowns, while the defined inquiry requires possible narrative or allegorical solutions.

This portfolio reaches synthesis and good/advanced skill levels on rows C and D of the Sustained Investigation rubric, but the written evidence does not guide this body of work. The use of psychological color, sharp stylized contours, and soft volumetric shading across various approaches demonstrate the synthesis of visual relationships within the work. The work demonstrates confidence by contrasting bold compositions with nuanced ethereal mark-making. The materials and processes relate visually to the emotional situations of circus performers and environments. However, the holistic written evidence does not show how the inquiry guided the student to seek, search, and discover.



Image 5



Image 14

Sustained Investigation Score: **Row A: Score 2** • Row B: Score 2 • Row C: Score 3 • Row D: Score 3