

2022 AP[®] Drawing Sustained Investigation

Row A—Score 1

Written Evidence

Writing Prompt #1:

Identify the question(s) or inquiry that guided your sustained investigation.

Writing Prompt #2:

Describe how your sustained investigation shows evidence of practice, experimentation, and revision guided by your question(s) or inquiry.

Student Response

People are creatures of change. Throughout life, one learns, thinks and realizes that which paves the way for change. I see this in a way as a metamorphosis. One can endure struggles along their path that can change their direction. One can also experience change by simply living and surrounding oneself with compassion and love. My sustained investigation explores how change can be demonstrated in both traditional and surrealist portraits.

Path, journey, process: A voyage that every creature on this planet takes. Life offers all an individual route. There are periods of straightforward experiences 1,2,3,4- black and white to emphasize this notion of life presenting itself that way at times. To convey transition into change I added color 5,6,7. I experimented with Surrealist tones to define periods of conflict and turmoil, while incorporating elements of repetition alongside a full range of value 8-12. The journey concludes by reaching for the future 13, 14 in order to overcome struggle and ultimately ends with internal peace 15.

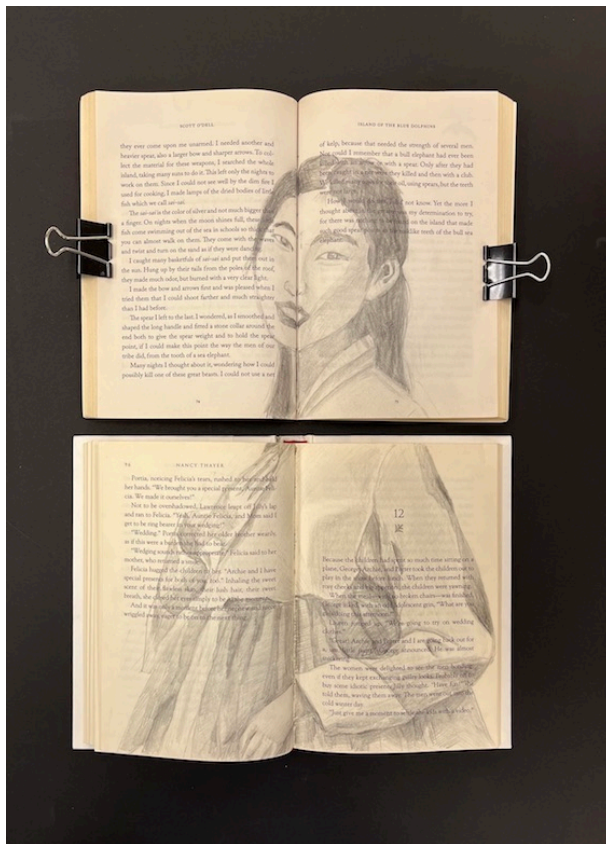


Image 1

Sustained Investigation

Height: 15 inches

Width: 9 inches

Material(s): Graphite on books.

Process(es): A non-traditional self portrait incorporating my culture. Emphasis on the divide between books.



Image 2

Sustained Investigation

Height: 14 inches

Width: 11 inches

Material(s): Graphite on paper.

Process(es): Created multiple layers of graphite to generate a full range of value and create depth and shadows.



Image 3

Sustained Investigation

Height: 17 inches

Width: 14 inches

Material(s): Pen on paper mounted on styrofoam of varying sizes.

Process(es): Constructed separate, multiple levels of drawings to form a whole scene.



Image 4

Sustained Investigation

Height: 17 inches

Width: 14 inches

Material(s): Graphite on paper

Process(es): Drawing with a full range of value using realism to create a surreal sensibility of growth.



Image 5

Sustained Investigation

Height: 14 inches

Width: 15 inches

Material(s): Color pencil on cardboard.

Process(es): Layered colored pencil to generate feeling of movement and planned composition to emphasize birds.



Image 6

Sustained Investigation

Height: 20 inches

Width: 12 inches

Material(s): Acrylic on wood.

Process(es): Emphasized the texture of the wood with thick layers of paint to evoke a repetitive calm.

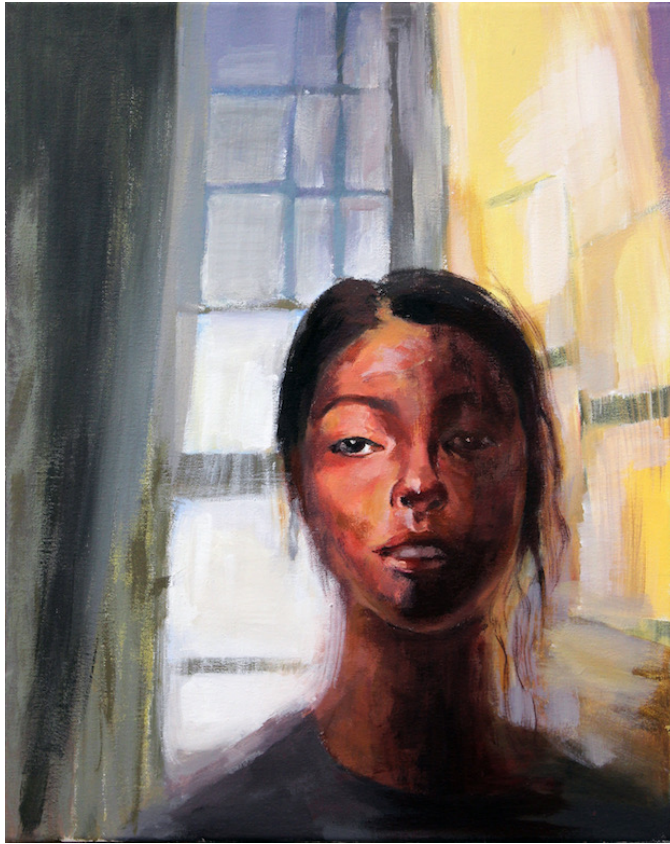


Image 7

Sustained Investigation

Height: 20 inches

Width: 16 inches

Material(s): Acrylic on canvas.

Process(es): Used extreme lighting to create a sense of dusk as the time of day.



Image 8

Sustained Investigation

Height: 17 inches

Width: 14 inches

Material(s): Color pencil on paper.

Process(es): Used line and texture as symbolism for bonds that tie family together.

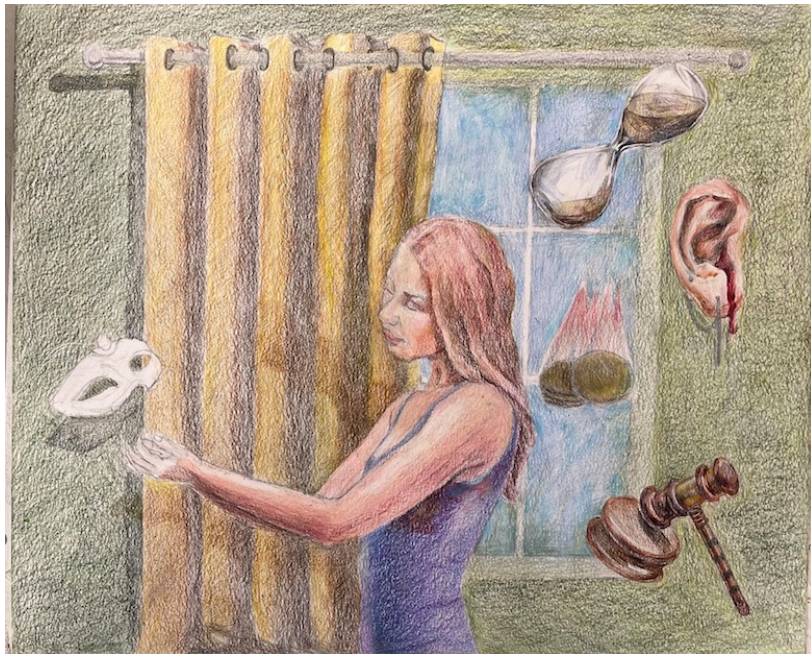


Image 9

Sustained Investigation

Height: 14 inches

Width: 17 inches

Material(s): Color pencil on paper.

Process(es): Unfinished work that served as a starting point for more Surrealist pieces later in my SI.



Image 10

Sustained Investigation

Height: 20 inches

Width: 19 inches

Material(s): Acrylic on canvas.

Process(es): Used the form of the cube to generate a sense of confinement and isolation.



Image 11

Sustained Investigation

Height: 20 inches

Width: 18 inches

Material(s): Acrylic on wood.

Process(es): Used the images of the balls and the element of repetition to create sense of being carried away.



Image 12

Sustained Investigation

Height: 20 inches

Width: 16 inches

Material(s): Acrylic on wood.

Process(es): Symbols of escalator, clouds and rain to evoke confusion, stairs of repetition to depict movement.



Image 13

Sustained Investigation

Height: 20 inches

Width: 17 inches

Material(s): Color pencil and watercolor on paper.

Process(es): The elements of repetition, line, and depth are shown with foreshortening of the girl reaching out.



Image 14

Sustained Investigation

Height: 14 inches

Width: 17 inches

Material(s): Color pencil on paper.

Process(es): Dreams are within reach and with proper care, the hardest of obstacles can be overcome.



Image 15

Sustained Investigation

Height: 16 inches

Width: 20 inches

Material(s): Acrylic on canvas.

Process(es): The elements of texture and space depicted through the bricks, whales, and buildings for serenity.

Sustained Investigation: Analytic Scoring Rubric and Score Rationale

Row A–Score 1

Analytic Scoring Rubric Row A: Inquiry		
Writing Prompt 1: <i>Identify the question(s) or inquiry that guided your sustained investigation.</i>		
1	2	3
Written evidence identifies an inquiry, but visual evidence does not relate to that inquiry. OR Written evidence does not identify an inquiry.	Written evidence identifies an inquiry that relates to the sustained investigation. AND Visual evidence demonstrates the sustained investigation.	Written evidence identifies an inquiry that guides the sustained investigation. AND Visual evidence demonstrates the sustained investigation.

Score Rationale

The visual evidence found in most works does not relate to the written inquiry. The overall written evidence is polished, but the ideas behind the investigation remain unclear. Images 5, 7, and 14 indicate limited evidence regarding “people as creatures of change,” but most do not connect to this line of inquiry and investigation. Images 1–4 portraying “periods of straightforward experiences” through the black and white media are too generalized in concept and do not connect the wide range of subject matter used. The use of color “to convey transition into change” in images 5, 6, and 7 does not help further relate, connect, or develop relationships between the works. Although the images demonstrate high levels of drawing skill and confidence, the disparate use of subject matter, formatting decisions, and tone do not tie the work into a clear sustained investigation. The inquiry would have benefitted from describing the specific types of change (psychological, physical, environmental, emotional, etc.) the artist aimed to convey. While the portfolio demonstrates a score of 3 through the synthesis of visual relationships and good/advanced levels of technical skill, there is no clear relationship between the preponderance of images and the written inquiry.



Image 2

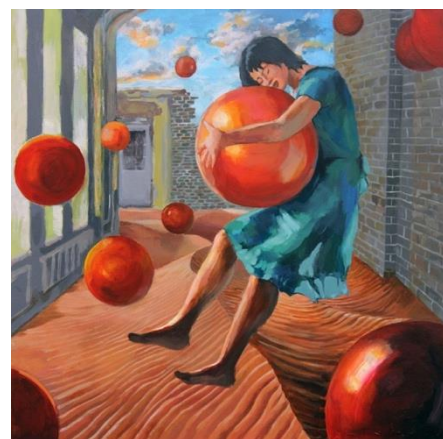


Image 11

Sustained Investigation Score: **Row A: Score 1** • Row B: Score 2 • Row C: Score 3 • Row D: Score 3