

**2022 AP<sup>®</sup> 3-D Art and Design****Sustained Investigation****Row D—Score 2****Written Evidence****Writing Prompt #1:**

Identify the question(s) or inquiry that guided your sustained investigation.

**Writing Prompt #2:**

Describe how your sustained investigation shows evidence of practice, experimentation, and revision guided by your question(s) or inquiry.

**Student Response**

My sustained investigation explores the feeling of preternatural dread and other negative emotions that can reach an extreme where they exceed what feels human. I wanted to see how I could express these emotions in physical manifestations, so throughout this investigation, I used clay to create a series of human-like beings that invoke a sense of distortion, dread, and discomfort. My interest in this theme was a representation of the massive amount of emotions I was experiencing at the start of the time I began my investigation due to a tragic event that occurred in my life.

I practiced with facial expressions to emphasize emotions, so most of my pieces are seen with a forged smile. This is intentional. There is anger, and it fills each piece. The dramatic proportions of their features such as their smiles represent mental distortion. I experimented with pastels instead of glazes, I wanted to be able to add shading to my pieces to add a more dramatic and realistic effect. Green, blue, and purple shading is used to represent fatigue as seen in piece number 1. I added an acrylic glaze to create a fleshy texture as if the pieces have been reborn.



## Image 1

Sustained Investigation

**Height:** 9 inches

**Width:** 5 inches

**Depth:** 3 inches

**Material(s):** clay, acrylic paint, acrylic glaze, pastels, paintbrushes, mannequin head.

**Process(es):** Mold the clay over the mannequin  
Form its facial features  
Fired it  
Painted with pastels and paint.



## Image 2

Sustained Investigation

**Height:** 9 inches

**Width:** 5 inches

**Depth:** 3 inches

**Material(s):** clay, acrylic paint, acrylic glaze, pastels, paintbrushes, mannequin head.

**Process(es):** Mold the clay over the mannequin  
Form its facial features  
Fired it  
Painted with pastels and paint.



### Image 3

Sustained Investigation

**Height:** 7 inches

**Width:** 4 inches

**Depth:** 3 inches

**Material(s):** clay, acrylic paint, acrylic glaze, pastels, paint brushes, sculpting tools, blades.

**Process(es):** Mold the clay  
Form its dental features  
Fired it  
Painted with pastels and paint.



### Image 4

Sustained Investigation

**Height:** 7 inches

**Width:** 4 inches

**Depth:** 1 inches

**Material(s):** clay, acrylic paint, acrylic glaze, pastels, paintbrushes, sculpting tools, blades, toothpicks.

**Process(es):** Mold the clay  
Formed its eye and fingers  
Fired it  
Painted with pastels and paint.



## Image 5

Sustained Investigation

**Height:** 7 inches

**Width:** 4 inches

**Depth:** 1 inches

**Material(s):** clay, acrylic paint, acrylic glaze, pastels, paintbrushes, sculpting tools, blades, toothpicks.

**Process(es):** Mold the clay  
Formed its eye and fingers  
Fired it  
Painted with pastels and paint.



## Image 6

Sustained Investigation

**Height:** 7.5 inches

**Width:** 4 inches

**Depth:** 4 inches

**Material(s):** clay, acrylic paint, acrylic glaze, pastels, paintbrushes, sculpting tools, blades, toothpicks.

**Process(es):** mold the clay over a bowl  
created mushrooms  
fired it  
painted with acrylic paint and pastels





## Image 7

Sustained Investigation

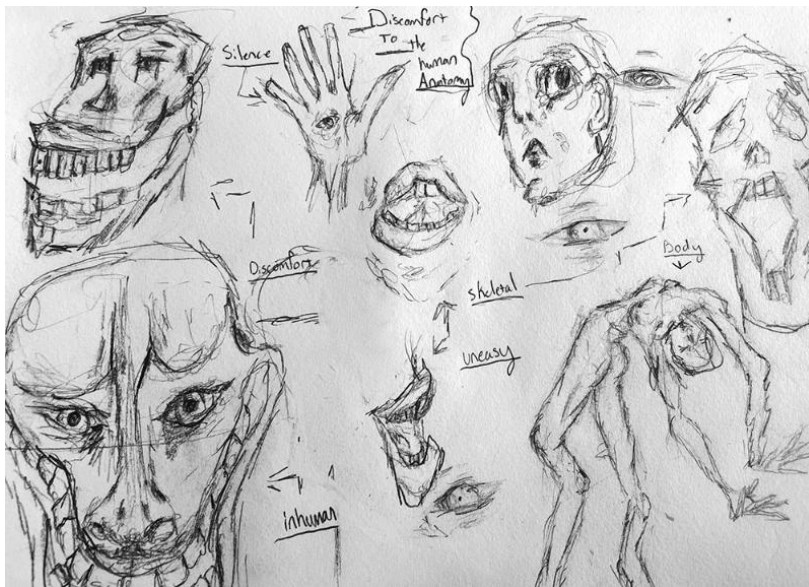
**Height:** 11 inches

**Width:** 7 inches

**Depth:** 4 inches

**Material(s):** clay, acrylic paint, acrylic glaze, pastels, paintbrushes, sculpting tools, blades, toothpicks.

**Process(es):** Mold the clay over the mannequin  
Form its facial features  
Fired it  
Painted with pastels and paint.



## Image 8

Sustained Investigation

**Height:** 8.5 inches

**Width:** 11 inches

**Depth:** 1 inches

**Material(s):** paper, pencil

**Process(es):** sketched an idea from dreams  
focused on concept



## Image 9

Sustained Investigation

**Height:** 9 inches

**Width:** 5 inches

**Depth:** 3 inches

**Material(s):** clay, acrylic paint, acrylic glaze, pastels, paintbrushes, mannequin head.

**Process(es):** Mold the clay  
Form its facial features  
Fired it  
Painted with pastels and paint.



## Image 10

Sustained Investigation

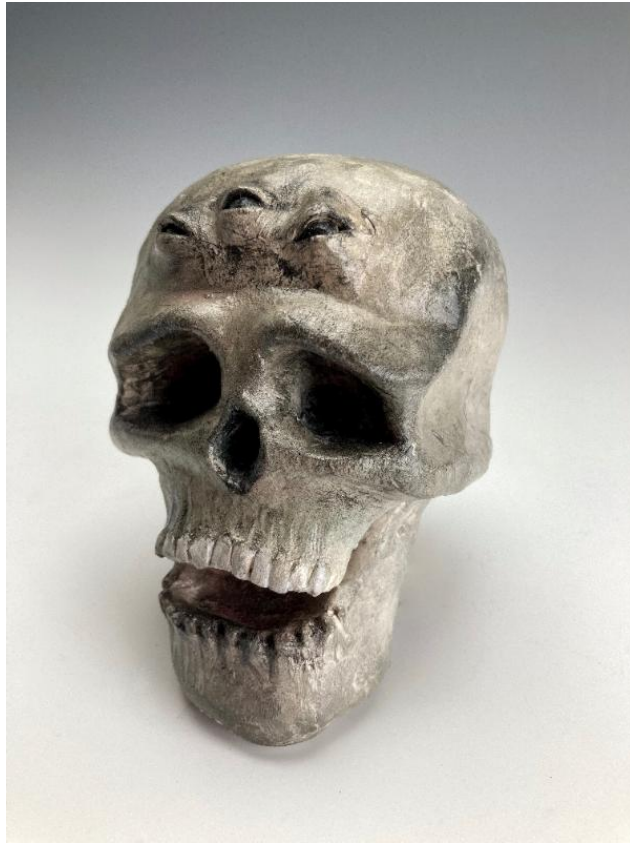
**Height:** 8 inches

**Width:** 3 inches

**Depth:** 1 inches

**Material(s):** clay, acrylic paint, acrylic glaze, pastels, paintbrushes, sculpting tools, blades, toothpicks.

**Process(es):** Mold the clay  
Formed its eye and skin  
Fired it  
Painted with pastels and paint.



## Image 11

Sustained Investigation

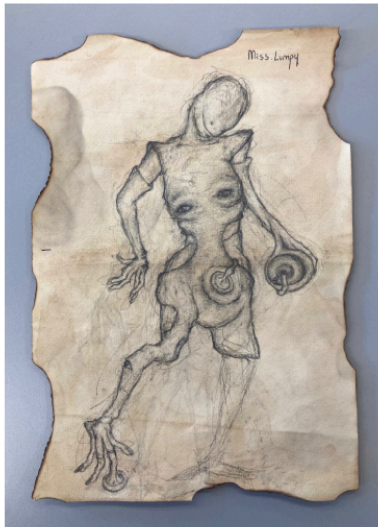
**Height:** 6 inches

**Width:** 3 inches

**Depth:** 3 inches

**Material(s):** clay, acrylic paint, acrylic glaze, pastels, paintbrushes, sculpting tools, blades, toothpicks.

**Process(es):** molded the clay into two balls  
sculpt its skeletal features  
fired it  
painted with pastels and paint



## Image 12

Sustained Investigation

**Height:** 11 inches

**Width:** 8.5 inches

**Depth:** 1 inches

**Material(s):** pencil, paper, coffee, water.

**Process(es):** dip the paper into coffee water  
dry paper  
began to sketch ideas from childhood





## Image 13

Sustained Investigation

**Height:** 8 inches

**Width:** 4 inches

**Depth:** 4 inches

**Material(s):** clay, underglaze, pastels, paintbrushes, sculpting tools, blades, toothpicks.

**Process(es):** Mold the clay  
Formed its eyes and body shape  
Fired it  
Painted with underglaze and scrubbed it off.



## Image 14

Sustained Investigation

**Height:** 5 inches

**Width:** 9 inches

**Depth:** 2 inches

**Material(s):** clay, acrylic paint, acrylic glaze, pastels, paintbrushes, sculpting tools, blades, toothpicks.

**Process(es):** Mold the clay  
Formed its eyes and body shape  
Fired it  
Painted with pastels and paint.





## Image 15

Sustained Investigation

**Height:** 5 inches

**Width:** 9 inches

**Depth:** 2 inches

**Material(s):** clay, acrylic paint, acrylic glaze, pastels, paintbrushes, sculpting tools, blades, toothpicks.

**Process(es):** Mold the clay  
Formed its eyes and body shape  
Fired it  
Painted with pastels and paint.

## Sustained Investigation: Analytic Scoring Rubric and Score Rationale

### Row D–Score 2

Analytic Scoring Rubric Row D: 2-D/3-D/Drawing Art and Design Skills		
1	2	3
Visual evidence of <b>rudimentary and moderate</b> 2-D/3-D/Drawing skills.	Visual evidence of <b>moderate and good</b> 2-D/3-D/Drawing skills.	Visual evidence of <b>good and advanced</b> 2-D/3-D/Drawing skills.

### Score Rationale

The work shows evidence of moderate and good 3-D skills. Creating surface depth in sculptural forms to generate a wide range of value indicates an advanced understanding of space and form (image 13). Effective use of texture and color is evident in image 9, which suggests a proficient understanding of 3-D skills. Several works demonstrate engagement and a good understanding of the principle of occupied/unoccupied space (images 10, 13, 14, and 15). Images 4, 10, and 15 show experimentation with activated space, while others (images 1, 3, 7, and 11) have a static composition and need contour development. Throughout the portfolio, the visual evidence varies in 3-D skill level from moderate, to good, to advanced but “across all works does not display a range of good (proficient) to advanced (highly developed) skills” and therefore earns a score of 2.



Image 9



Image 13

Sustained Investigation Score: Row A: Score 3/2 • Row B: Score 3/2 • Row C: Score 3/2 • **Row D: Score 2**